

IR and RI : 外部システムからのスムーズな利用

Ono, Mayumi
University of Tokyo Library System

Inoue, Sozo
Kyushu University Library

Hoshiko, Nami
Kyushu University Library

<http://hdl.handle.net/2324/8833>

出版情報 : デジタルリポジトリ連合国際会議. 2008, pp.67-67, 2008-01-30
バージョン :
権利関係 :



Smooth Use from External Systems

+Mayumi ONO, *Sozo INOUE, *Nami HOSHIKO
+Library, University of Tokyo, Japan mono@lib.u-tokyo.ac.jp
*Library, Kyushu University, Japan {nhosh,sozo}@lib.kyushu-u.ac.jp

1. Introduction

What is IR ?



IR (Institutional repository) is an online database for collecting and preserving intellectual output produced by research institutions.

Kyushu University Institutional Repository (QIR) contains 6,200 items.

What is RI ?



RI (Kyushu University Researcher Information System) is an online database to inform educational, research and social activity of the researcher in the university to the public.

Why did we link IR and RI?



∴ We considered a system for navigating RI users to QIR.

What is the goal?

- ① Leading RI visitors to the QIR items by clicking on bibliographic information on RI.
- ② Submitting items on QIR by using metadata on RI.

2. Method

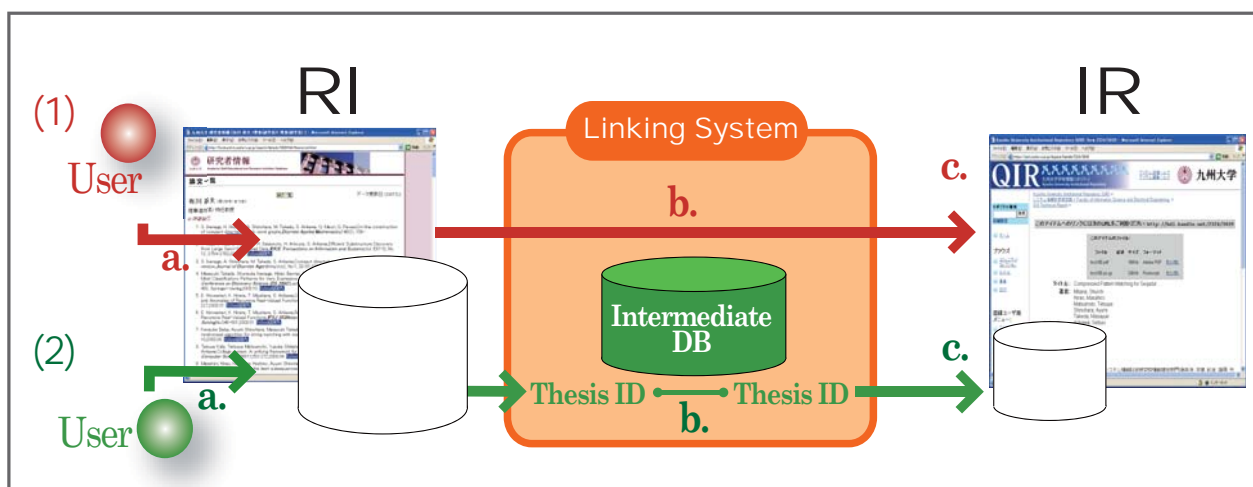
The system that achieves linking from RI to IR named "Linking System".

Two Ways of Linking

(1) Direct search

- a. A user clicks bibliographic information on RI.
- b. Linking System search IR directly.
- c. The search result displayed on the linking system.

- a. A user clicks bibliographic information on RI.
- b. Linking System refers to thesis ID given for each IR items in the intermediate database.
- c. Leading the user directly to the appropriate article in IR.



Advantage / disadvantage of two methods

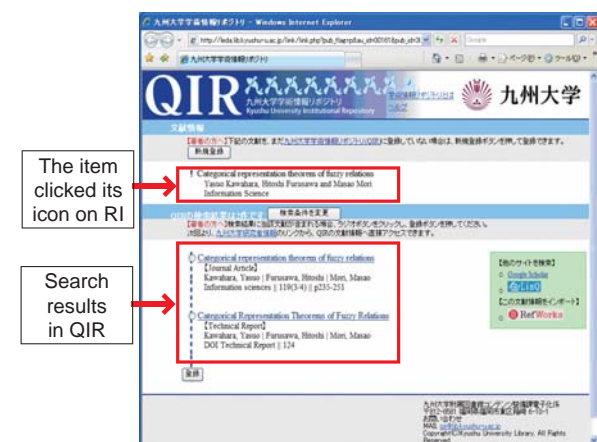
	Advantage	Disadvantage
(1)	The link information is accurate.	Data maintenance is necessary.
(2)	Data maintenance is not necessary.	The search could be unsuccessful.

Linking System utilizes the both merit of IR and RI to solve the problem of hyperlink and database maintenance

How to display a search result on Linking System

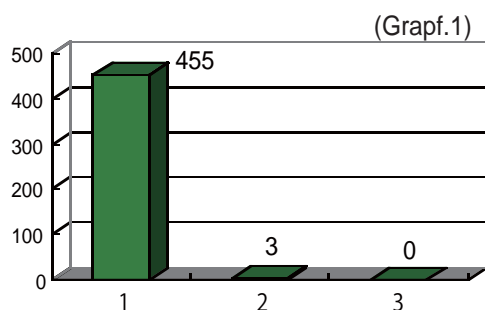
RI website visitor clicks "Fulltext QIR" icon
↓
Linking System search in QIR database

The author of the article is able to make a direct link from RI to QIR by selecting one of the search results and preserving the relationship into the intermediate database.

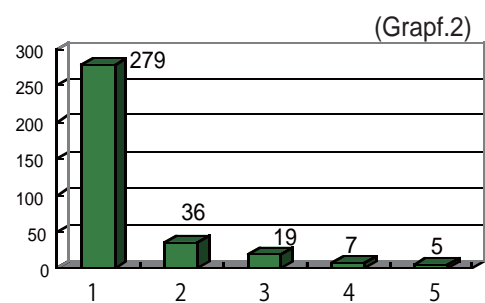


3. Result

Graph.1 shows the number of hits when QIR is searched by article titles in RI. In most cases, the search from RI to IR produce no results. We needs to improve the search performance.

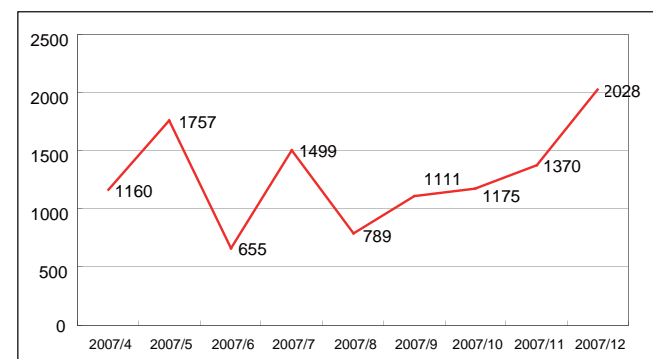


Graph.2 shows the number of hits when RI is searched by article titles in QIR. It suggests that some articles in QIR can be linked by two or more researchers' bibliographic information in RI.



4. Conclusion

- The number of click "Fulltext QIR" icons is growing gradually. It can be said that our first goal of leading RI visitors to QIR is accomplished.



The Number of Clicking "Fulltext QIR" Icons

(System assessment tests were held in April, May and July, so the number increased temporarily at the time.)

- The concept of Linking System is to resolve the linkage between two systems by search. This concept can be applied to various situation.