

A NEW JAPANESE SPECIES OF THE GENUS  
SYMBALLOPHTHALMUS WITH BICOLOROUS THORAX  
(Diptera, Empididae)

SAIGUSA, TOYOHEI

Biological Laboratory General Education Department Kyushu University

<https://doi.org/10.15017/7343178>

---

出版情報 : Sieboldia : acta biologica . 3 (1), pp.183-185, 1963-06-30. 九州大学教養部生物学教室  
バージョン :  
権利関係 :



A NEW JAPANESE SPECIES OF THE GENUS  
*SYMBALLOPHTHALMUS* WITH BICOLOROUS THORAX  
(Diptera, Empididae)

TOYOHEI SAIGUSA

(Biological Laboratory, General Education Department, Kyushu University)

---

The genus *Symballopthalmus* was founded for *Macroptera pictipes* Becker, which was incorrectly considered for long times the same species as *Tachydromia dissimilis* Fallén.

In the fourth volume of *British Flies*, Collin (1961) revealed that the Becker's species was not conspecific with *dissimilis*, and its mesoscutum was evenly clothed with fine grey hairs not arranged in rows, and without distinct acrosticals, and he added two new species to this genus from England. All these Palaearctic species have entirely blackish thorax. In 1957, Chillcott newly recorded the genus from the Nearctic Region based upon a new species. This species, *masoni*, are also blackish. Recently the author collected two female specimens referable to this genus in Oirase of Tōhoku district of Honshu. These specimens, however, have the yellowish mesoscutum marked with two black oval spots near humeri, and represent a distinct new species. Detailed descriptions of this species is as follows.

*Symballopthalmus speciosus* Saigusa, sp. nov.

(Text-fig. 1, ♀ mesonotum)

♀. Head entirely black, spherical, a little deeper than long; compound eyes touching on frons, widely separated on face, with upper front facets distinctly enlarged, nearly as large as an ocellus; ocellar prominence with a pair of proclinate yellowish ocellar bristles; occiput dull black, faintly dusted with dark grey, occipital hairs all yellowish, postocular ciliation of longer hairs; face dull black. Antennae tawny, longer than head, fused basal segments small and bearing a cirlet of yellowish hairs at tip; 3rd segment three times as long as basal segments together, infuscated towards tip, and with a pubescent brownish arista a little shorter than 3rd segment. Palpi and proboscis yellow, the latter half as

long as head is deep.

Thorax yellow to tawny-yellow, shining; mesoscutum with a pair of large black side patches which are oval in shape, extend from about humerus to just before postalar callus, but do not cover humeri; scutellum brownish, paled at sides, covered with yellow pile; metanotum and upper

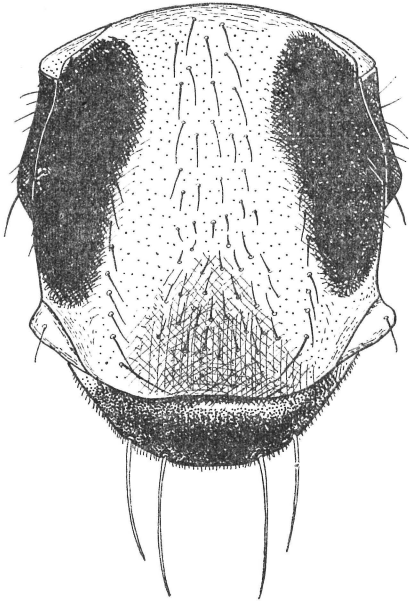


Fig. 1. Female mesonotum of *Symbalophthalmus speciosus* Saigusa, sp. nov.

half of mesothoracic pleura dark brown. Chaetotaxy: thoracic bristles and hairs all yellow; acrostichals short and irregularly quadriserial, but scattered and proclinate behind; dorsocentrals about twelve in number, uniserial, without long bristles behind; no humeral, a strong notopleural with several scattered short hairs, a few hair-like supra-alar, a weak postalar and equally long four scutellar bristles; metapleura bare.

Legs slender and yellow, apical half of 5th tarsomeres black, hind femora infuscated on apical half, hind tibiae dark brown to black, paled at tip; hairs of legs yellow except for on darkened portion. Femora all slender, short-haired above, covered beneath with whitish pile; front femora with a posteroventral row of fine yellow

bristles longest about base; middle femora bearing beneath with a double row of tawny bristles, the anteroventral of long bristles on basal half, shorter and darker ones on apical half, the posteroventral similar to that of front femora; hind femora evenly clothed with short hairs longer and prominent anteroventrally towards tip; front tibiae as thick as femur, constricted at base, and short-haired; middle tibiae short-haired above, bearing minute spiny bristles beneath; hind tibiae with short dark pubescence; tarsi simple, short-pubescent, without long hairs.

Wings almost hyaline, with brownish veins, venation as in *dissimilis* and *scapularis* Collin figured in Collin's British Flies, but 2nd basal cell acutely and more strongly produced. Squamae pale yellow with concolorous fringe. Halteres long, constricted at one-third from base, pale yellow from base to the constricted portion, remainder dark brown.

Abdomen weakly sclerotized, pointed towards tip; terga tawny, darker on posterior segments, sterna yellow, three posterior sterna brownish; cerci slender and brown. Pubescence of abdomen short and

yellow.

Length: Body 2.7—2.8 mm; wings 2.5—2.7 mm.

Distribution: Japan (Honshu).

Types: Holotype ♀ and paratype 1 ♀, Ishigeto, Oirase, Towada, Aomori Pref., Honshu, 14. VII. 1962, T. Saigusa leg. The type-specimens are now preserved in the author's collection.

This new species is very distinct from all the known species in the yellowish mesoscutum with black side patches. The only two type-specimens were obtained from the undergrowth in the woods along the valley of Oirase by the diligent sweeping, but the author could not get any further specimens.

