

A NEW PITHECOPS FROM THE TSUSHIMA ISLANDS, JAPAN (LEPIDOPTERA ; LYCAENIDAE)

SHIRÔZU, TAKASHI

Biological Laboratory, General Education Department, Kyushu University

<https://doi.org/10.15017/7333706>

出版情報 : Sieboldia : acta biologica . 2 (1), pp.35-37, 1957-06-20. 九州大学教養部生物学教室
バージョン :
権利関係 :



A NEW *PITHECOPS* FROM THE TSUSHIMA ISLANDS, JAPAN
(LEPIDOPTERA ; LYCAENIDAE)

TAKASHI SHIRÔZU

(Biological Laboratory, General Education Department, Kyushu University)

The discovery of a species of the genus *Pithecops* in the Tsushima Islands, Japan, by Mr. Akio Urata in August of 1954 was utterly unexpected, as the butterflies of the genus have been known only from the tropical Orient. At that time I identified and recorded it as *Pithecops corvus* Fruhstorfer (= *P. hylax* auct., nec Fabricius) in Tyo to Ga, 5(3/4): 21-22, 1954, but later I became aware of its misidentification, and learned that the butterfly must be conspecific with *P. fulgens* Doherty* described from Assam. On the other hand, Mr. A. Urata collected more materials for me at the same locality in the summer of 1955, but those specimens were not in good condition. At the end of July, 1956, I had a good opportunity to visit the habitat by myself, and fortunately succeeded to get a number of specimens of good condition. Meanwhile, I could examine some male specimens of *P. fulgens* from its type locality, Assam, by the courtesy of Mr. Masahide Yoshida of Amagasaki, and could compare many specimens from the Tsushima Islands with them carefully. The result of my observation shows that the butterfly from Tsushima is really conspecific with *P. fulgens* from Assam, as I have already assumed, judging from the structure of the male genitalia as well as general appearance, and may represent a new subspecies of it as described below

***Pithecops fulgens tsushimana* Shirôzu et Urata, subsp. nov.**

Jap. name: Tsushima-uraboshi-shijimi.

(Pl. 4, figs. 7-14, 25-32, ♂; 15-18, 33-36, ♀. Text-figs. 1-4, ♂ genitalia)

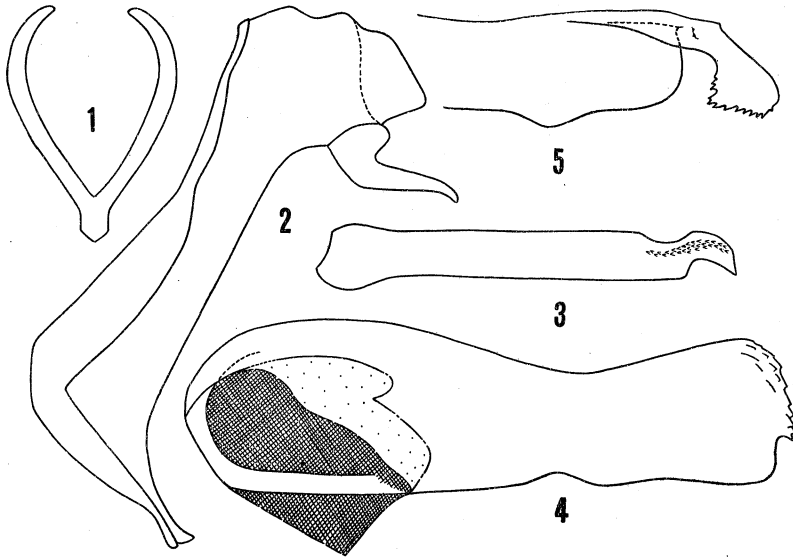
1954 *Pithecopsis* [!] *hylax* Shirôzu (nec Fabricius), Tyo to Ga (Trans. Lep. Soc. Jap.), 5 (3/4): 21-22.

This subspecies may be distinguishable from the nominate subspecies from Assam in the following points in the male.

♂. Wing-shape is decidedly narrower. Upperside: the area with deep

* *Pithecops fulgens* Doherty, Journ. As. Soc. Bengal, 58 (2): 127, pl. 10, fig. 6, 1889.

purple, shining scales is usually larger in both the wings; the purple area on forewings always covers the base of the spaces 6, 7, 8 and 9 beyond the discoidal cell, while in the nominate form the purple area is not extended anteriorly beyond the discoidal cell. Blackish fringes at the end of veins are developed in less degree. Underside: the submarginal series of black spots of both the wings is usually less strongly developed; apical part of forewings is less darkened; the shape of the large black patch on hindwings near the apical angle is variable but usually rounded or elliptical, its long axis being parallel to the veins while in the nominate subspecies, the patch is somewhat quadrate, its long axis being somewhat transverse to the veins.



Figs. 1-4. Male genitalia of *Pithecopus fulgens tsushimana* Shirôzu et Urata from the Tsushima Islands (1. juxta; 2. ring, lateral aspect; 3. aedeagus, lateral aspect; 4. valve, internal aspect).

Fig. 5. *P. corvus urai* Bethune-Baker from Formosa (valve, apical part, internal aspect).

All the figures were drawn with the same magnification.

Male genitalia are identical with those in the nominate subspecies, differing utterly from *P. corvus urai* Bethune-Baker from Formosa as shown in text-figures.

♀. Upperside of both the wings is uniformly brown, or somewhat paler in central area of forewings, and entirely destitute of deep purple shining scales which are present in the male. Underside of wings is similar to that in the male sex.

I could not compare the female of this subspecies with the nominate race from Assam.

Length of forewings: 10–14 mm. (♂); 12–14 mm. (♀).

Habitat: Tsushima Islands, Japan.

Food plant: *Desmodium racemosum* D. C. (Leguminosae).

Holotype ♂, allotopotype ♀, paratopotypes 19♂♂ 5♀♀, Sasuna-mura, Tsushima Islands, 22–23. vii. 1956, T. Shirôzu leg.; paratypes 5♂♂ 4♀♀, the same locality, 5. viii. 1954 and 31. vii.–2. viii. 1955, A. Urata leg.

Holo-, allotopo- and some paratopotypes and all the paratypes are preserved in the Entomological Laboratory, Faculty of Agriculture, Kyushu University and other paratopotypes will be preserved in the collections of the British Museum (London), Alexander König Museum (Bonn), Zoologische Sammlung des Bayerischen Staates (Munich), Muséum National d'Histoire Naturelle (Paris), Bishop Museum (Honolulu), National Science Museum (Tokyo), Messrs. Paul Jacoulet (Karuizawa), K. Hayashi (Tokyo), M. Yoshida (Amagasaki), H. Ono (Obihiro) and of the author.

Owing to my research with Mr. A. Urata on July 22–23, 1956 at Sasuna-mura, Tsushima Islands, I fortunately found some females ovipositing their eggs on flower-buds of *Desmodium racemosum*, which grew as the undergrowth in *Cryptomeria*-forest along a small stream. After careful examination, some more eggs and young green larvae of usual Lycaenid shape of this butterfly were obtained on flower-buds or on flowers of this plant. Those eggs and caterpillars obtained were brought back to Fukuoka for rearing, but I failed to breed until pupa, as no spike (on which flower-buds attached) was yet seen in Fukuoka and its neighbourhood, where the same plant was equally abundant.

In conclusion, appreciation is expressed to Professor Teiso Esaki and Professor Keizo Yasumatsu of Kyushu University for their kindness given in preparing this manuscript, Mr. M. Yoshida of Amagasaki for lending me some male specimens of *P. fulgens* Doherty from Assam, and to Mr. H. Yamamoto for preparing the drawings of the male genitalia.

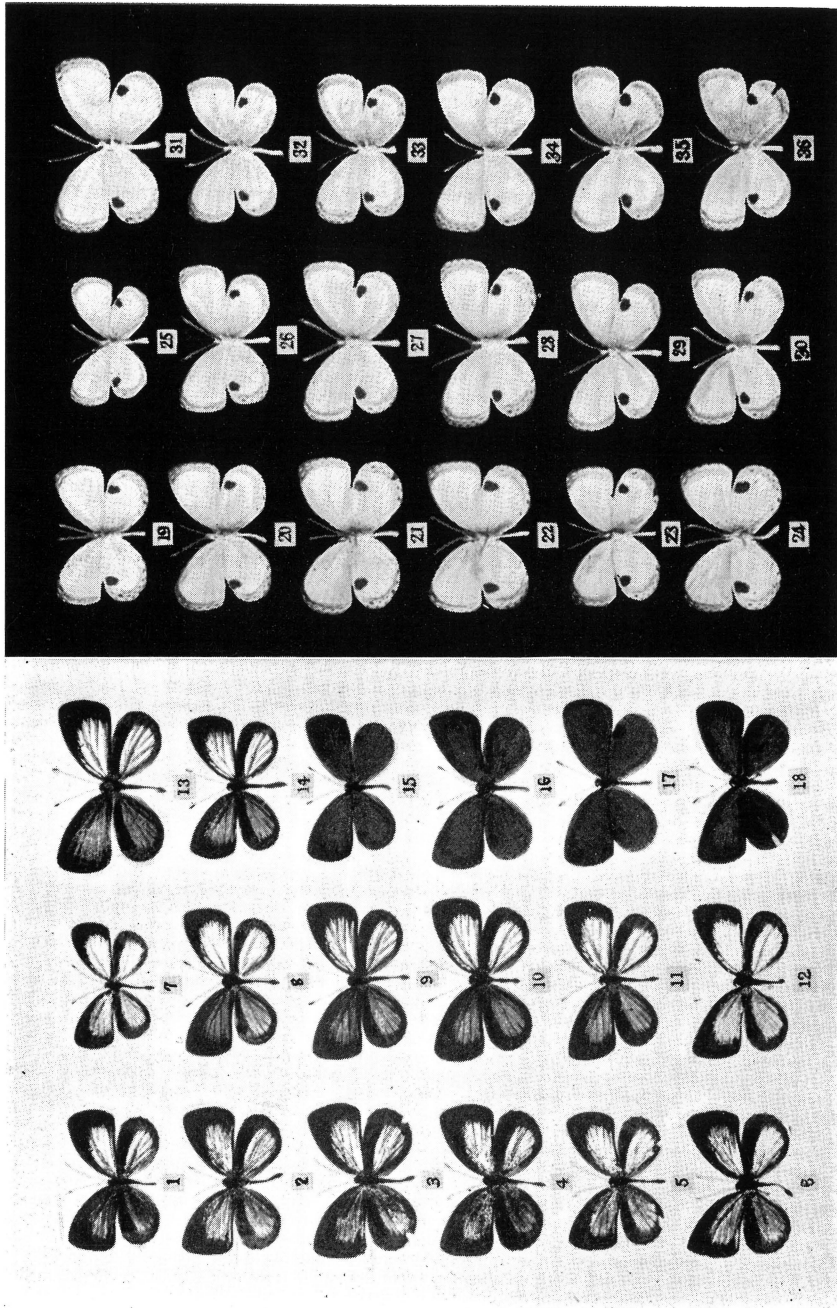
Explanation of Plate 4

Figs. 1–6. *Pithecops fulgens fulgens* Doherty, ♂. (Fig. 1, Assam Valley, 6. iii. 1955; figs. 2–6, Naga Hills, Assam, 17–24. iii. 1957, T. Norman leg.)

Figs. 7–18. *Pithecops fulgens tsushimana* Shirôzu et Urata, subsp. nov. Sasuna-mura, Tsushima Islands, 22–23. vii. 1956, T. Shirôzu leg. (Figs. 7–14, ♂; 15–18, ♀. Fig. 9, holotype; 15, allotopotype).

Figs. 19–24. Undersides of figs. 1–6.

Figs. 25–36. Undersides of figs. 7–18.



A new *Pithecopis* from the Tsushima Islands

