

## A Japanese family with dystonia due to a pathogenic variant in SGCE

Morikawa, Takuya

Division of Genomics, Medical Institute of Bioregulation, Kyushu University

Miura, Shiroh

Department of Neurology and Geriatric Medicine, Ehime University Graduate School of Medicine

Fan, Luoming

Division of Genomics, Medical Institute of Bioregulation, Kyushu University

Watanabe, Emina

Division of Genomics, Medical Institute of Bioregulation, Kyushu University

他

<https://hdl.handle.net/2324/7329591>

---

出版情報 : Human Genome Variation. 9, pp.29-, 2022-08-22. Springer



バージョン :

権利関係 : © The Author(s) 2022

## DATA REPORT OPEN



# A Japanese family with dystonia due to a pathogenic variant in *SGCE*

Takuya Morikawa<sup>1</sup><sup>✉</sup>, Shiroh Miura<sup>2</sup>, Luoming Fan<sup>1</sup>, Emina Watanabe<sup>1</sup>, Ryuta Fujioka<sup>3</sup>, Hiromichi Motooka<sup>4</sup>, Shingo Yasumoto<sup>4</sup>, Yusuke Uchiyama<sup>5</sup> and Hiroki Shibata<sup>1</sup><sup>✉</sup>

© The Author(s) 2022

Dystonia (DYT) is a heterogeneous neurological disorder, and there are many types of DYT depending on the responsible genes. DYT11 is an autosomal dominant DYT caused by functional variants in the *SGCE* gene. We examined a Japanese patient with myoclonic dystonia. By using exome analysis, we identified a rare variant in the *SGCE* gene, NM\_003919.3: c.304C > T [Arg102\*], in this patient. Therefore, this patient has been molecularly diagnosed with DYT11. By Sanger sequencing, we confirmed that this variant was paternally inherited in this patient. By allele-specific PCR, we confirmed that the maternally inherited normal allele of *SGCE* was silenced, and only the paternally inherited variant allele was expressed in this patient. Despite the pathogenicity, identical variants have been recurrently reported in eight independent families from different ethnicities, suggesting recurrent mutations at this mutational hotspot in *SGCE*.

*Human Genome Variation*; <https://doi.org/10.1038/s41439-022-00207-8>

Dystonia is a neurological disorder characterized by abnormal involuntary movements or postures owing to sustained or intermittent muscle contractions<sup>1</sup>. Monogenic forms of dystonia/dyskinesias (DYTs) are classified from DYT1 to DYT25, and 17 genes are known to be responsible for DYT<sup>2</sup>. In addition to these 17 genes, 9 new genes have been suggested to be responsible for DYT<sup>3</sup>. *SGCE* is the gene responsible for DYT11<sup>1</sup>.

A 19-year-old female, without a family history of involuntary movements, noticed occasional jerking in her right hand when writing or using chopsticks at the age of eight. She often had difficulty holding things in her right hand. Her symptoms were aggravated by psychological stress. Her symptoms gradually worsened and spread to her left hand. She had no other significant medical history. Neurological examination revealed no abnormalities except for action myoclonus in her hands with right dominance and occasionally dystonic posture in her right foot during walking. Her action myoclonus was inhibited by dorsiflexion of the wrist joint. No abnormalities were observed in brain magnetic resonance imaging or electroencephalography. Her symptoms improved dramatically with clonazepam (1.5 mg/day). Her parents showed no neurological abnormalities. The patient was diagnosed with myoclonus-dystonia syndrome.

We performed exome sequencing for the patient who was diagnosed with DYT (Fig. 1A). We identified a total of 130,940 variants in the patient (II-1). Since she was diagnosed with myoclonus-dystonia syndrome<sup>2,3</sup>, we selected 80 variants located in 26 genes known to be associated with DYT (Table S1). Out of the 80 variants, we identified only two functional variants with a MAF (minor allele frequency) <0.02. One was a heterozygous

variant in *PKRA* that is known to be associated with the autosomal recessive form of DYT, so we excluded this variant. Then, we retained only one variant, NM\_003919.3:c.304C > T [Arg102\*], in the epsilon sarcoglycan gene *SGCE*.

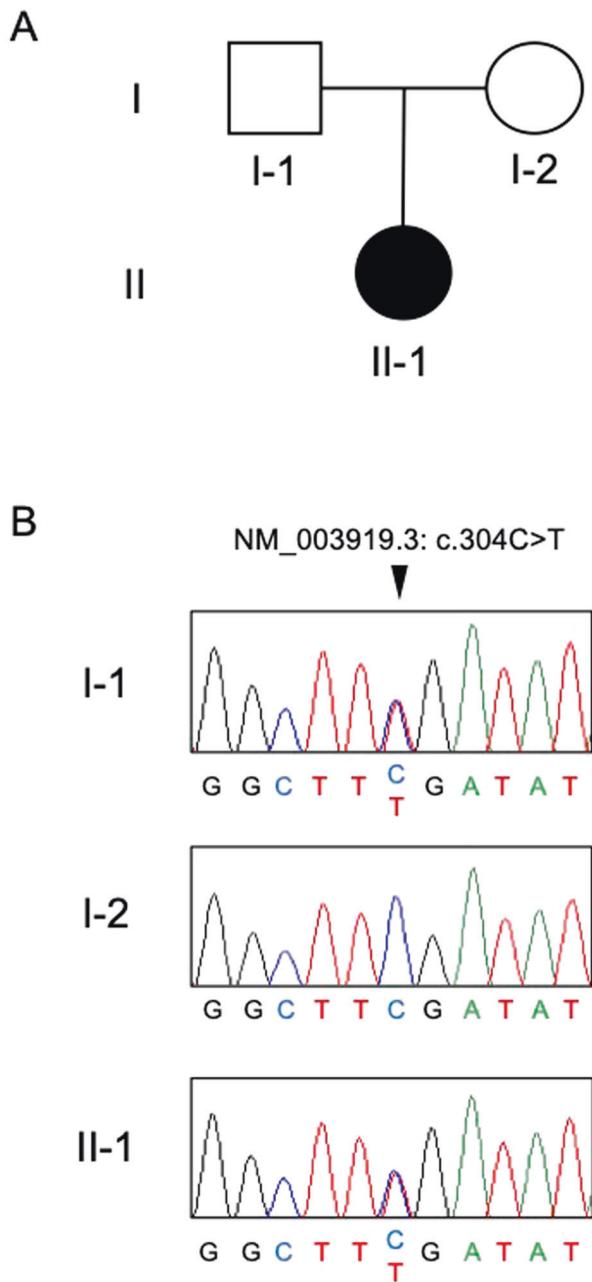
We validated the variant by Sanger sequencing for all family members (forward primer, 5'-ACTACCAAAGCAACATGTGTGA-3' and reverse primer 5'-GCTTCCCCACATTTTCAGCT-3'). This variant was also found in the unaffected father (I-1) of the patient as well as the patient, indicating the paternal inheritance of this variant for this patient (Fig. 1B). *SGCE* is known to be an imprinted gene and is expressed only from paternal alleles by silencing maternal alleles<sup>4,5</sup>. Since the father (I-1) carrying the variant does not show DYT symptoms, it is highly likely that the variant was maternally inherited from the patient's grandmother and was silenced in I-1 by genomic imprinting. To confirm genetic silencing, we performed allele-specific real-time qPCR using total RNA extracted from peripheral blood to determine which allele was expressed (Fig. 2A and Supplementary Table S2). Allele-specific PCR revealed that the *SGCE* mRNA of the patient (II-1) was only transcribed from the variant allele. The amount of *SGCE* mRNA in the patient (II-1) was lower than that in the mother (I-2) (Fig. 2A). This is likely due to nonsense-mediated decay degrading abnormal mRNAs. Allele-specific qPCR also revealed that the *SGCE* mRNA in the patient (II-1) was transcribed almost exclusively from the variant allele (Fig. 2B). However, we could not obtain statistical significance due to the very low expression of *SGCE* in the peripheral blood. Unfortunately, we could not include the father (I-1) in the analyses due to the unavailability of his total RNA.

This variant has already been identified as the variant responsible for DYT in eight independent families worldwide<sup>6-9</sup>.

<sup>1</sup>Division of Genomics, Medical Institute of Bioregulation, Kyushu University, 3-1-1, Maidashi, Higashi-ku, Fukuoka, Japan. <sup>2</sup>Department of Neurology and Geriatric Medicine, Ehime University Graduate School of Medicine, 454, Shitsukawa, Toon, Ehime, Japan. <sup>3</sup>Department of Food and Nutrition, Beppu University Junior College, 82, Kitaishigaki, Beppu, Oita, Japan. <sup>4</sup>Department of Neuropsychiatry, Kurume University School of Medicine, 67, Asahimachi, Kurume, Japan. <sup>5</sup>Department of Radiology, Kurume University School of Medicine 67, Asahimachi, Kurume, Japan. ✉email: morikawa@gen.kyushu-u.ac.jp; hshibata@gen.kyushu-u.ac.jp

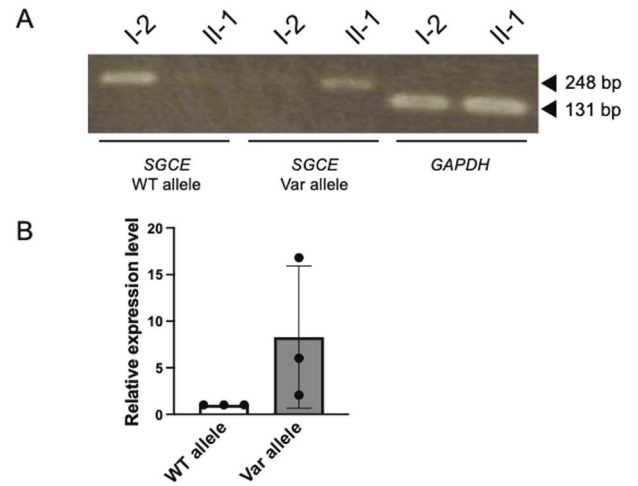
Received: 24 June 2022 Accepted: 25 July 2022

Published online: 22 August 2022



**Fig. 1 Pedigree diagram and genotyping of the *SGCE* variant.** **A** Pedigree of the tested family. Squares: males, circles: females, solid symbols: affected individuals, open symbols: unaffected individuals. **B** Electropherogram of the region of the NM\_003919.3: c.304C>T variant in all family members. The location of the variant is indicated by a triangle.

This suggests that the identical variants have recurrently arisen at the mutational hotspot in the *SGCE* gene, despite the high CADD score (CADD = 41). According to the ACMG/AMP/CAP guidelines, the variant meets the criteria of PVS1, PS1, PM1, PM2, PP1, PP3, PP4, and PP5<sup>10</sup>. Collectively, we concluded that the *SGCE* variant is responsible for DYT in the current patient, and she has been molecularly diagnosed with DYT11. We also directly confirmed that the genomic imprinting of *SGCE* affects the pathogenesis of DYT11. Specifically, the maternally inherited normal allele of *SGCE*



**Fig. 2 Allele-specific real-time qPCR of *SGCE*.** **A** PCR products amplified with allele-specific primers were visualized by agarose gel electrophoresis. PCR products were electrophoresed on a 1.2% agarose gel at 100 V for 20 min. **B** Expression levels of the two alleles of *SGCE* in the patient (II-1) were individually examined by qPCR. qPCR using allele-specific primers was performed using Applied Biosystems 7500. The experiment was performed with three technical replications. The expression levels of the wild-type allele and variant allele are shown in open and filled columns, respectively. Values are presented as the mean  $\pm$  SD. In all experiments, the expression levels from the variant alleles is shown relative to the expression level from the wild-type allele. Most of the *SGCE* mRNA of the patient expressed the variant alleles. WT wild type, Var variant.

was silenced, and only the paternally inherited variant allele was expressed in this patient.

#### HGV DATABASE

The relevant data from this Data Report are hosted at the Human Genome Variation Database at <https://doi.org/10.6084/m9.figshare.hgv.3213>.

#### REFERENCES

- Balint, B. et al. Dystonia. *Nat. Rev. Dis. Prim.* **4**, 25 (2018).
- Klein, C. Genetics in dystonia. *Parkinsonism Relat. Disord.* **20S1**, S137–S142 (2014).
- Wirth, T. et al. Increased diagnostic yield in complex dystonia through exome sequencing. *Parkinsonism Relat. Disord.* **74**, 50–56 (2020).
- Müller, B. et al. Evidence that paternal expression of the epsilon-sarcoglycan gene accounts for reduced penetrance in myoclonus-dystonia. *Am. J. Hum. Genet.* **71**, 1303–1311 (2002).
- Koide, N., Dateki, S., Watanabe, K. & Moriuchi, H. Novel *SGCE* mutation (p.Glu65\*) in a Japanese family with myoclonus-dystonia. *Pediatr. Int.* **59**, 1018–1020 (2017).
- Grünewald, A. et al. Myoclonus-dystonia: significance of large *SGCE* deletions. *Hum. Mut.* **29**, 331–332 (2008).
- Hedrich, K. et al. Myoclonus-dystonia: detection of novel, recurrent, and de novo *SGCE* mutations. *Neurology* **62**, 1229–12231 (2004).
- Han, F., Lang, A. E., Racacho, L., Bulman, D. E. & Grimes, D. A. Mutations in the epsilon-sarcoglycan gene found to be uncommon in seven myoclonus-dystonia families. *Neurology* **61**, 244–246 (2003).
- Zimprich, A. et al. Mutations in the gene encoding epsilon-sarcoglycan cause myoclonus-dystonia syndrome. *Nat. Genet.* **29**, 66–69 (2001).
- Richards, S. et al. Standards and guidelines for the interpretation of sequence variants: a joint consensus recommendation of the American College of Medical Genetics and Genomics and the Association for Molecular Pathology. *Genet. Med.* **17**, 405–424 (2015).

## ACKNOWLEDGEMENTS

This work was supported by the Cooperative Research Project Program of the Medical Institute of Bioregulation, Kyushu University. We appreciate the technical assistance from The Research Support Center, Research Center for Human Disease Modeling, Kyushu University Graduate School of Medical Sciences.

## COMPETING INTERESTS

The authors declare no competing interests.

## ADDITIONAL INFORMATION

**Supplementary information** The online version contains supplementary material available at <https://doi.org/10.1038/s41439-022-00207-8>.

**Correspondence** and requests for materials should be addressed to Takuya Morikawa or Hiroki Shibata.

**Reprints and permission information** is available at <http://www.nature.com/reprints>

**Publisher's note** Springer Nature remains neutral with regard to jurisdictional claims in published maps and institutional affiliations.



**Open Access** This article is licensed under a Creative Commons Attribution 4.0 International License, which permits use, sharing, adaptation, distribution and reproduction in any medium or format, as long as you give appropriate credit to the original author(s) and the source, provide a link to the Creative Commons license, and indicate if changes were made. The images or other third party material in this article are included in the article's Creative Commons license, unless indicated otherwise in a credit line to the material. If material is not included in the article's Creative Commons license and your intended use is not permitted by statutory regulation or exceeds the permitted use, you will need to obtain permission directly from the copyright holder. To view a copy of this license, visit <http://creativecommons.org/licenses/by/4.0/>.

© The Author(s) 2022