

XAF1 overexpression exacerbates diabetes by promoting pancreatic β -cell apoptosis

西村, 優輝

<https://hdl.handle.net/2324/6758953>

出版情報 : 九州大学, 2022, 博士 (歯学), 課程博士
バージョン :

権利関係 : (c) The Author(s) 2022. Open Access This article is licensed under a Creative Commons Attribution 4.0 International License.



XAF1 overexpression exacerbates diabetes by promoting pancreatic β -cell apoptosis

Yuki Nishimura¹ · Misaki Iwashita¹ · Masato Hayashi¹ · Takanori Shinjo¹ · Yukari Watanabe¹ · Tatsuro Zeze¹ · Akiko Yamashita¹ · Takao Fukuda¹ · Terukazu Sanui¹ · Tomomi Sano² · Tomoichiro Asano³ · Fusanori Nishimura¹

Received: 22 March 2022 / Accepted: 22 June 2022
© The Author(s) 2022

Abstract

Aims Pancreatic β -cell apoptosis may be involved in the onset and progression of type 2 diabetes mellitus, although its mechanism remains unclear. We previously demonstrated that macrophage-derived interferon (IFN) β induced X-linked inhibitor of apoptosis–associated factor 1 (XAF1) expression in β -cells and accelerated β -cell apoptosis in vitro. Here, we explored the effects of XAF1 on β -cell function and progression of diabetes in vivo.

Methods Pancreatic β -cell-selective XAF1 overexpressing (*Xaf1* Tg) mice were generated. *Xaf1* Tg mice and their wild-type (WT) littermates were fed either a normal diet or a 40% or 60% high-fat diet (HFD). The effects of β -cell XAF1 on β -cell apoptosis and exacerbation of diabetes were investigated.

Results Palmitic acid induced IFN β expression in macrophages, and HFD intake promoted macrophage infiltration in pancreatic islets, both of which cooperatively upregulated XAF1 expression in mouse islets. Furthermore, HFD-fed *Xaf1* Tg mice demonstrated increased β -cell apoptosis, lowered insulin expression, and impaired glucose tolerance compared with WT mice fed the same diet. These effects were more pronounced in the 60%HFD group than in the 40%HFD group.

Conclusions Pancreatic β -cell XAF1 expression was enhanced via HFD-induced, macrophage-derived IFN β , which promoted β -cell apoptosis and led to a reduction in insulin secretion and progression of diabetes. To our knowledge, this is the first report to demonstrate an association between pancreatic β -cell XAF1 overexpression and exacerbation of diabetes, thus providing insight into the mechanism of β -cell mass reduction in diabetes.

Keywords X-linked inhibitor of apoptosis–associated factor 1 · Interferon β · β -cell apoptosis · High-fat diet

Introduction

The onset and progress of type 2 diabetes mellitus are mainly caused by insulin resistance and pancreatic β -cell dysfunction. Insulin resistance is mainly initiated and sustained by

inflammation in adipose tissue, caused by the infiltration of immune cells, such as macrophages, surrounding hypertrophied adipocytes [1, 2]. Consumption of a high-fat diet (HFD) changes the gut microbiota, which induces endotoxemia followed by chronic inflammation in various tissues, including adipose tissue [3]. Insulin resistance caused by obesity is often accompanied by a transient increase in insulin secretion and the number of pancreatic β -cells as a compensatory mechanism. However, this compensation cannot be sustained over time, leading to the attenuation of insulin secretion and β -cell mass reduction, which ultimately induces diabetes [4, 5].

Apoptosis is an important mechanism responsible for the decrease in β -cell mass. Chronic hyperglycemia or free fatty acids (FFAs) have been shown to induce increased endoplasmic reticulum stress, reactive oxygen species, and amyloid deposition, thereby promoting β -cell apoptosis [6–9]. Further, p53-mediated pathway is reportedly associated with

Managed By Massimo Federici.

✉ Misaki Iwashita
iwashita.misaki.896@m.kyushu-u.ac.jp

¹ Department of Periodontology, Division of Oral Rehabilitation, Faculty of Dental Science, Kyushu University, 3-1-1 Maidashi, Higashi-ku, Fukuoka 812-8582, Japan

² Department of Cell Biology and Pharmacology, Faculty of Dental Science, Kyushu University, Fukuoka, Japan

³ Department of Medical Chemistry, Division of Molecular Medical Science, Graduate School of Biomedical and Health Sciences, Hiroshima University, Hiroshima, Japan

β -cell apoptosis [10]. However, the mechanism of β -cell apoptosis is not fully understood. Elucidation of the mechanisms involved in islet β -cell mass reduction is essential for establishing fundamental treatment strategy against the onset and progression of diabetes.

Infiltration of inflammatory cells, such as macrophages, is observed in the islets of patients with type 2 diabetes mellitus [11], although the influence of these inflammatory cells on β -cell mass reduction remains unclear. We previously reported that activated macrophages stimulated with toll-like receptor 4 ligand promoted the secretion of interferon (IFN) β . Furthermore, IFN β -stimulated β -cells significantly increased the expression of an IFN-inducible gene, *X-linked inhibitor of apoptosis-associated factor 1 (Xaf1)* [12]. XAF1 promotes apoptosis by inhibiting X-linked inhibitor of apoptosis protein (XIAP), which inhibits caspase-3 activation and suppresses the apoptosis cascade [13].

In our previous work, we reported that endotoxin-stimulated macrophages produced IFN β , which resulted in increased XAF1 protein production in β TC6 cells and accelerated β -cell apoptosis when exogenously added to the cell culture [12]. However, the *in vivo* effects of inflammation-induced XAF1 on β -cell function warranted further investigation. Here, we generated transgenic mice selectively expressing the *Xaf1* gene in β -cells, and examined the effects of β -cell XAF1 on β -cell function and the development of diabetes *in vivo*. The study aimed to determine the mechanism of pancreatic β -cell mass reduction as one of the fundamental pathological features of diabetes.

Methods

Animals

Transgenic (Tg) founder mice (F0) expressing the *Xaf1* gene selectively in pancreatic β -cells were generated using *pRIP-N-Myc-Xaf1* expression vector (Supplementary Fig. 1a). Diets fed the mice were the same as those used in the previous report [14], as described in the supplementary information. The animal study was reviewed and approved by Institutional Animal Care and Use Committee of the University of Kyushu (protocol #A20-101-0 and #1-7).

Islet isolation and insulin secretion assay

Islet isolation and insulin secretion assay was performed as described previously [15]. Islets were isolated by perfusing the pancreatic duct with Collagenase P (Roche, Basel, Switzerland), followed by digestion for 12 min at 37 °C. For the insulin secretion assay, 0.5 mL of RPMI 1640 medium containing 3 mM glucose (pH 7.4) was added to ten purified islets, and then the suspension was incubated at 37 °C for

60 min under 5% CO². After centrifugation, the supernatant was removed. To the residue (the precipitated islets), 0.2 mL of 3 mM glucose in RPMI 1640 medium was added, and the suspension was incubated at 37 °C for 60 min under 5% CO². The suspension was centrifuged again and the supernatant was collected for analysis as the sample was stimulated with 3 mM glucose. To the residue, a mixture containing 0.2 mL of 20 mM glucose was added and incubated at 37 °C for a further 60 min under 5% CO². The suspension was centrifuged and the supernatants were collected for analysis as the sample stimulated with 20 mM glucose. The insulin levels in the supernatant were measured using a Mouse Insulin ELISA Kit. The data were normalized by the protein concentration of the lysate.

Immunofluorescence staining

Immunofluorescence staining was performed as described previously [14] using the antibodies listed in the supplementary information. Paraffin-embedded tissues of mice samples were cut into 5 μ m sections and they were dewaxed in xylene and rehydrated in graded ethanol solutions. Antigen retrieval was performed with citrate buffer (6 pH) for 10 min at 95 °C. Sections rinsed in PBS for 5 min. Non-specific labeling was blocked by incubation with 1% BSA at room temperature for 30 min. Sections were then incubated with primary antibodies at 4 °C overnight. After incubation with the primary antibody, the sections were washed and incubated with secondary antibodies for 2 h in the dark at room temperature. The samples were visualized by Keyence BZ-9000 (Keyence, Osaka, Japan). Positive areas were quantified using Image J software (National Institute of Health, Bethesda, MA, USA). Twenty islets per experimental group (4 animals in each group and 5 random islets per animal) were evaluated in each analysis. The sizes of β -cell and α -cell area per pancreas section were calculated from 15 sections (random 3 to 4 sections from 4 animals in each group).

TUNEL staining

Evaluation of apoptosis was performed with ApopTag® Plus In Situ Apoptosis Fluorescein Detection Kit (Merck, Darmstadt, Germany) to find DNA strand breaks using the terminal deoxynucleotidyl transferase-mediated dUTP nick end labeling (TUNEL) reagent. According to the manufacturer's instructions, TUNEL staining was performed in combination with insulin immunofluorescence staining. The samples were visualized by Keyence BZ-9000 (Keyence). The average number of TUNEL positive cells per islet of 5 random fields from each sample were quantitated using Image J software (National Institute of Health).

More detailed methods are described in the Supplementary Information.

Results

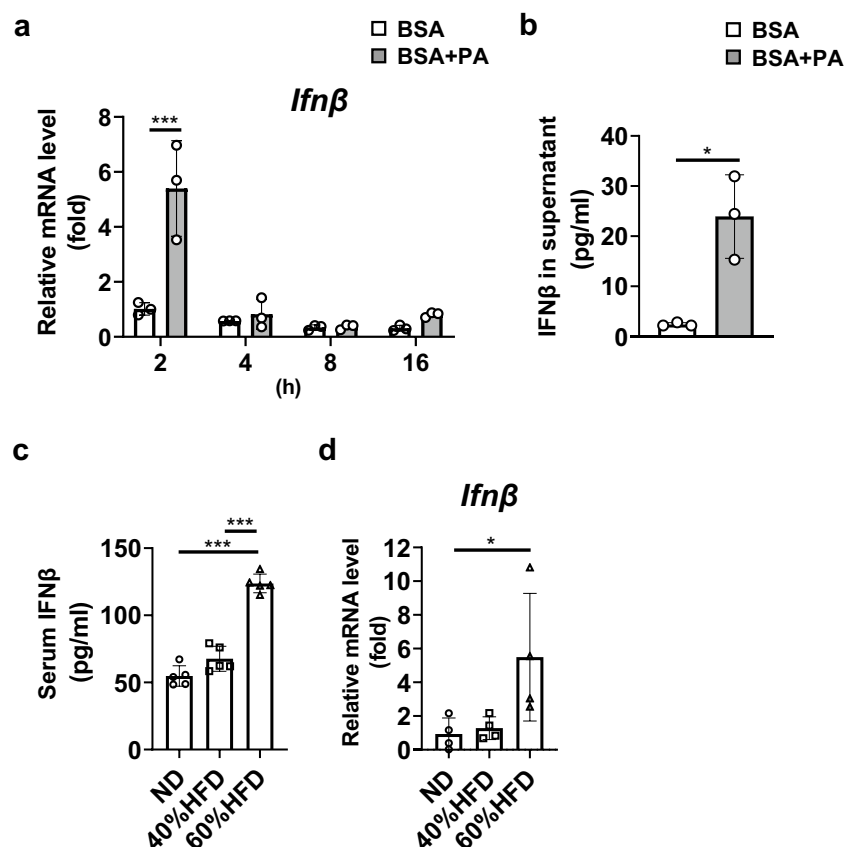
Palmitic acid (PA) promoted IFN β secretion from macrophages

We previously reported that *Ifn β* mRNA expression and IFN β secretion were increased in RAW264.7 macrophages stimulated with lipopolysaccharide [12]. Obese individuals have elevated blood concentration of saturated fatty acids, such as PA. Thus, we stimulated macrophages with PA. *Ifn β* mRNA expression was significantly upregulated in PA-stimulated RAW264.7 macrophages compared with that in vehicle-stimulated controls (Fig. 1a). IFN β secretion from RAW264.7 macrophages was also increased after 24-h stimulation with PA (Fig. 1b). We also investigated the effects of HFD feeding on systemic IFN β levels in vivo. The serum IFN β concentration was significantly higher in 60%HFD-fed mice than in mice ND and 40%HFD groups (Fig. 1c). *Ifn β* mRNA expression level in the islet of 60%HFD-fed mice was significantly elevated compared with ND-fed mice (Fig. 1d).

High-fat diet intake induced XAF1 expression in mouse islets

We previously performed comprehensive gene expression analysis in α TC1 and β TC6 cells individually co-cultured with RAW264.7 macrophages [12]. *Xaf1* gene expression was elevated by LPS stimulation in β TC6 cells, whereas almost no change was observed in α TC1 cells. In addition, IFN β stimulation to β TC6 cells resulted in increased XAF1 protein production, cleaved caspase-3 expression, and β -cell apoptosis [12]. Based on these results, we generated β -cell-selective XAF1 overexpressing (*Xaf1* Tg) mice to investigate the role of β -cell XAF1 in vivo. We confirmed that the XAF1 protein level was upregulated in islets of *Xaf1* Tg mice, whereas XAF1 expression levels were unchanged in the liver and epididymal adipose tissues (Supplementary Fig. 1b). It has been reported that the RIP promoter results in widespread expression in the hypothalamus [16]. To confirm the specificity of our overexpression system, XAF1 expression level in the hypothalamus was validated (Supplementary Fig. 1c). In our model, there seemed to be little effect on XAF1 expression in the hypothalamus of *Xaf1* Tg mice. Within the same diet group (normal diet [ND], 40% or 60% HFD), values for total body weight, food intake, and tissue weight did not differ significantly between *Xaf1* Tg mice and

Fig. 1 Palmitic acid promoted IFN β secretion from macrophages. **a** *Ifn β* mRNA expression levels following 2, 4, 8, and 16 h stimulation with palmitic acid (PA) or bovine serum albumin (BSA) vehicle in RAW264.7 macrophages. Expression fold changes relative to *18S* mRNA were determined by RT-PCR ($n=3$). **b** IFN β protein concentration in the culture supernatants was determined 24 h after stimulation. **c, d** C57BL/6N mice were fed a normal diet (ND), 40% high-fat diet (HFD), or 60%HFD for 10 weeks. **c** IFN β protein concentration in mouse serum was determined by ELISA kits. **d** *Ifn β* mRNA expression levels in the islet of mice. Representative data from three independent experiments are shown. Data are expressed as mean (SD). * $p < 0.05$, *** $p < 0.001$



their WT littermates (Fig. 2a–c). At 17 weeks of age, WT mice gained 26.2% in the 40%HFD group and 41.5% in the 60%HFD group compared with the ND group, respectively. Also, at 17 weeks of age, *Xaf1* Tg mice gained 24.2% in the 40%HFD group and 38.4% in the 60%HFD group compared with the ND group, respectively. Serum FFA levels were increased in both WT and *Xaf1* Tg mice depending on the fat content of the diet, and no significant differences were observed between genotypes in each diet group (Fig. 2d). XAF1 expression was enhanced in the islets of *Xaf1* Tg mice compared with those of WT mice (Fig. 3a–3d). In *Xaf1* Tg mice, the XAF1-positive area increased proportionally with the amount of dietary fat (Fig. 3d). In WT mice, XAF1 expression tended to be promoted in the 60%HFD group (Fig. 3d). The double stained area for XAF1 and insulin is shown in yellow (Fig. 3c). Many XAF1- and insulin-positive cells were observed in the islets of *Xaf1* Tg mice in the ND group (Fig. 3c). However, *Xaf1* Tg mice in the 60%HFD group exhibited reduced insulin expression and, thus, increased numbers of XAF1-positive and insulin-negative cells in the islets (Fig. 3c). Although few XAF1-positive

cells were observed in the islets of ND-fed WT mice, the XAF1-positive area was increased in HFD-fed WT mice (Fig. 3b, d). *Xiap* gene expression levels did not differ significantly between the groups (data not shown). This observation is consistent with previously reported results in other studies, in which XAF1 expression did not influence XIAP expression [17].

High-fat diet-fed *Xaf1* Tg mice exhibited attenuated insulin expression and impaired glucose tolerance

Fasting insulin levels and blood glucose levels during the glucose tolerance test (GTT) and insulin tolerance test (ITT) did not differ significantly between ND-fed WT and *Xaf1* Tg mice (Fig. 4a–c). However, in the 40% and 60% HFD groups, fasting glucose levels were significantly higher in *Xaf1* Tg mice than in WT mice (Fig. 4d, g). In addition, the decline in blood glucose levels after reaching the peak was significantly delayed in *Xaf1* Tg mice compared with WT mice in the 40% and 60% HFD groups (Fig. 4d, g). In particular, *Xaf1* Tg mice in the 60%HFD group demonstrated

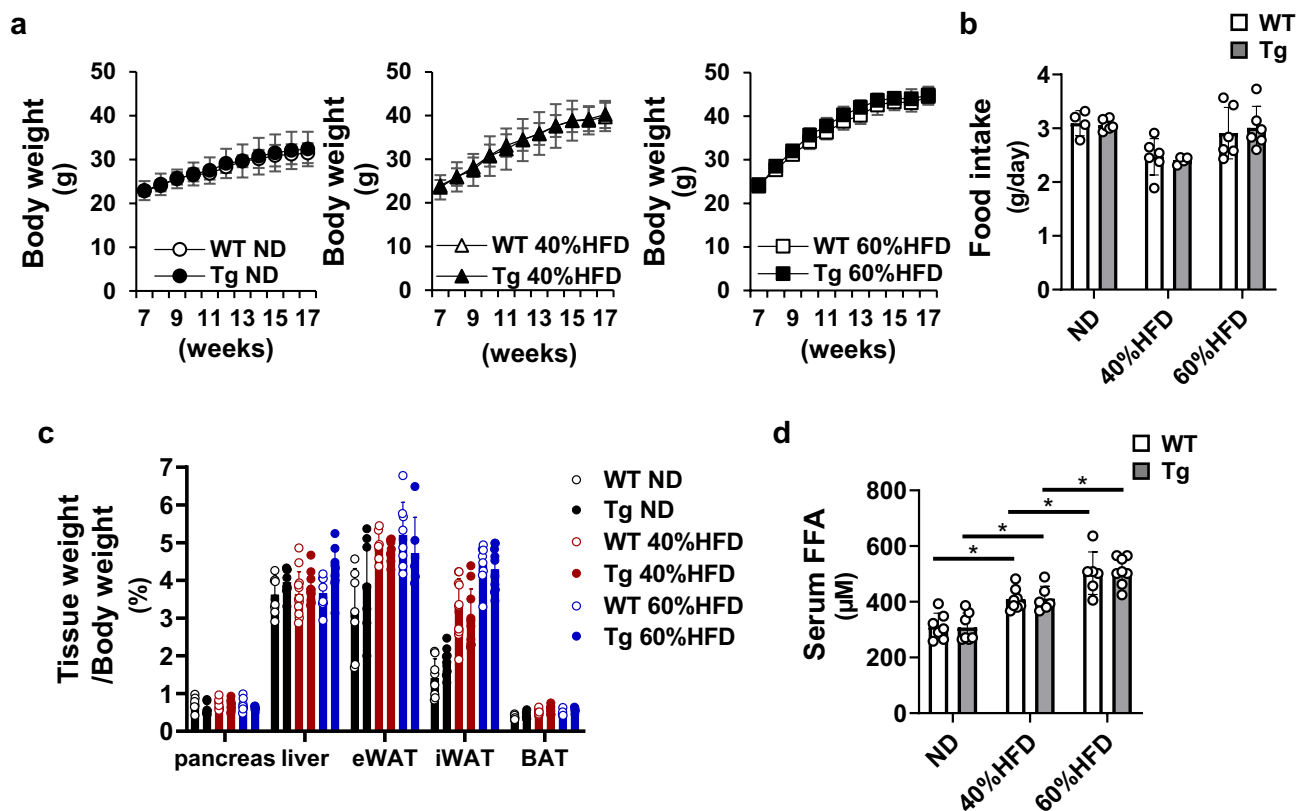


Fig. 2 Characteristics of *Xaf1* Tg mice. Wild-type (WT) and *Xaf1* Tg (Tg) mice were fed with a normal diet (ND) up to 7 weeks of age after weaning. From 7 weeks of age, mice were fed an ND, a 40%, or a 60% high-fat diet (40%HFD, 60%HFD) for 10 weeks. **a** Changes in body weight. **b** Mean daily food intake. **c** Tissue weight. **d** Serum

free fatty acid (FFA) concentration. ($n=5-8$ per group) Data are expressed as mean \pm SD. * $p < 0.05$. eWAT, epididymal white adipose tissue; iWAT, inguinal white adipose tissue; BAT, brown adipose tissue

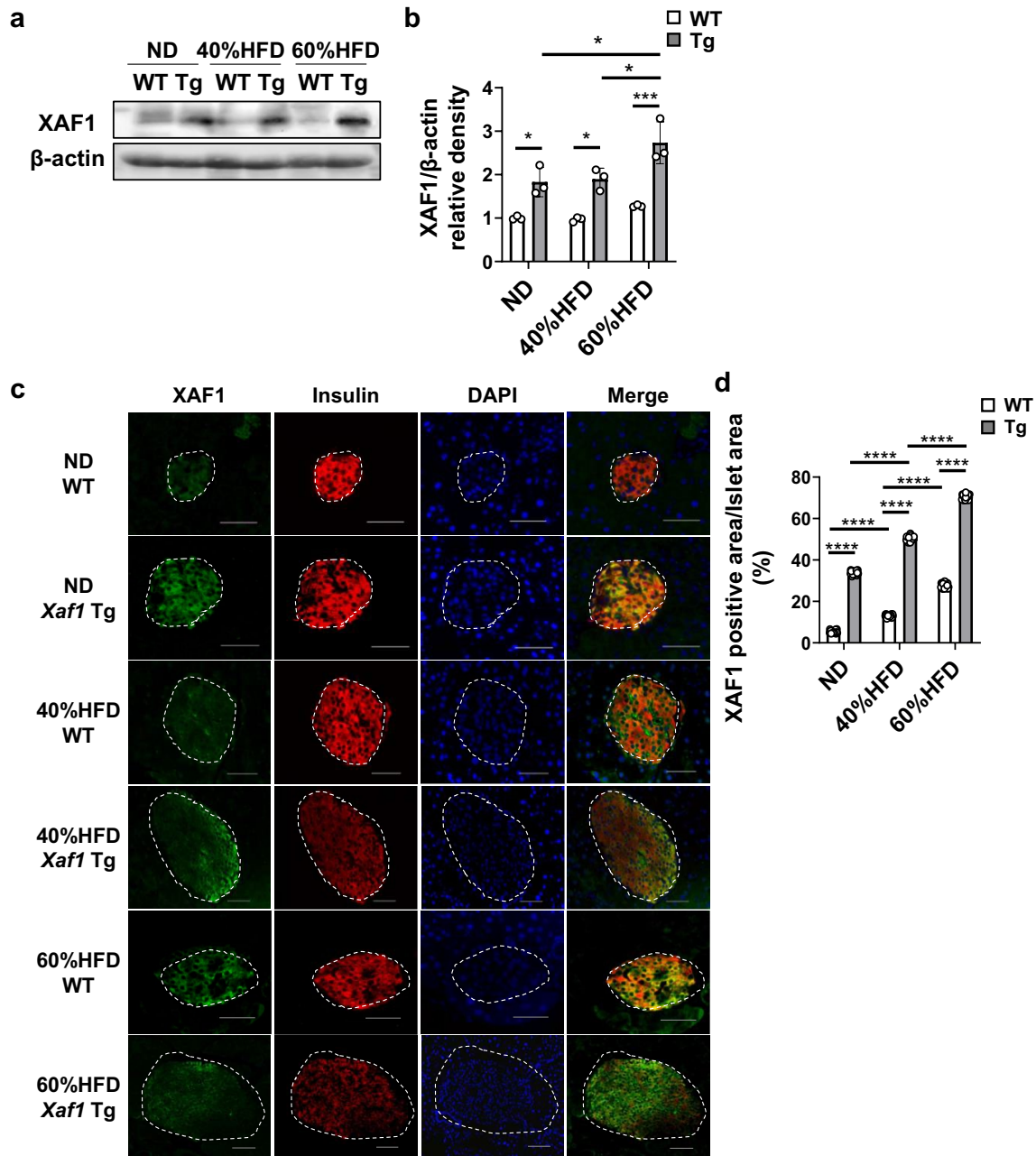


Fig. 3 High-fat diet intakes induced XAF1 expression in mouse islets. Wild-type (WT) and *Xaf1* Tg (Tg) mice were fed with a normal diet (ND) up to 7 weeks of age after weaning. From 7 weeks of age, mice were fed an ND, a 40%, or a 60% high-fat diet (40%HFD, 60%HFD) for 10 weeks. **a** Western blot analysis of XAF1 expression in islets of mice. Representative blots are shown. **b** Quantitative data of each corresponding western blot images from 3 independent experiments were presented as bar graphs. **c** Representative images

of immunofluorescence staining for XAF1 (green) and insulin (red) in pancreatic sections. Areas surrounded by white dotted lines indicate islets. The double stained area for XAF1 and insulin is shown in yellow. Scale bar = 50 μ m, 40 \times magnification. **d** Quantification of the average XAF1-positive area per islet area. Four animals in each group and 5 random islets per animal were quantified. Data are expressed as mean \pm SD. * p < 0.05, *** p < 0.001, **** p < 0.0001 (color figure online)

remarkably impaired glucose tolerance and significantly increased GTT-area under the curve (AUC) values compared with WT mice (Fig. 4g). In the ITT, *Xaf1* Tg mice in the 40% and 60% HFD groups displayed suppressed reduction of blood glucose levels 15 min after insulin administration

compared to WT mice fed the same diets (Fig. 4e, h). In the 60%HFD group, fasting insulin levels and values of homeostasis model assessment of β -cell function, an index of insulin secretory capacity, were significantly lower in *Xaf1* Tg mice than in WT mice (Fig. 4i, Supplementary Fig. 2).

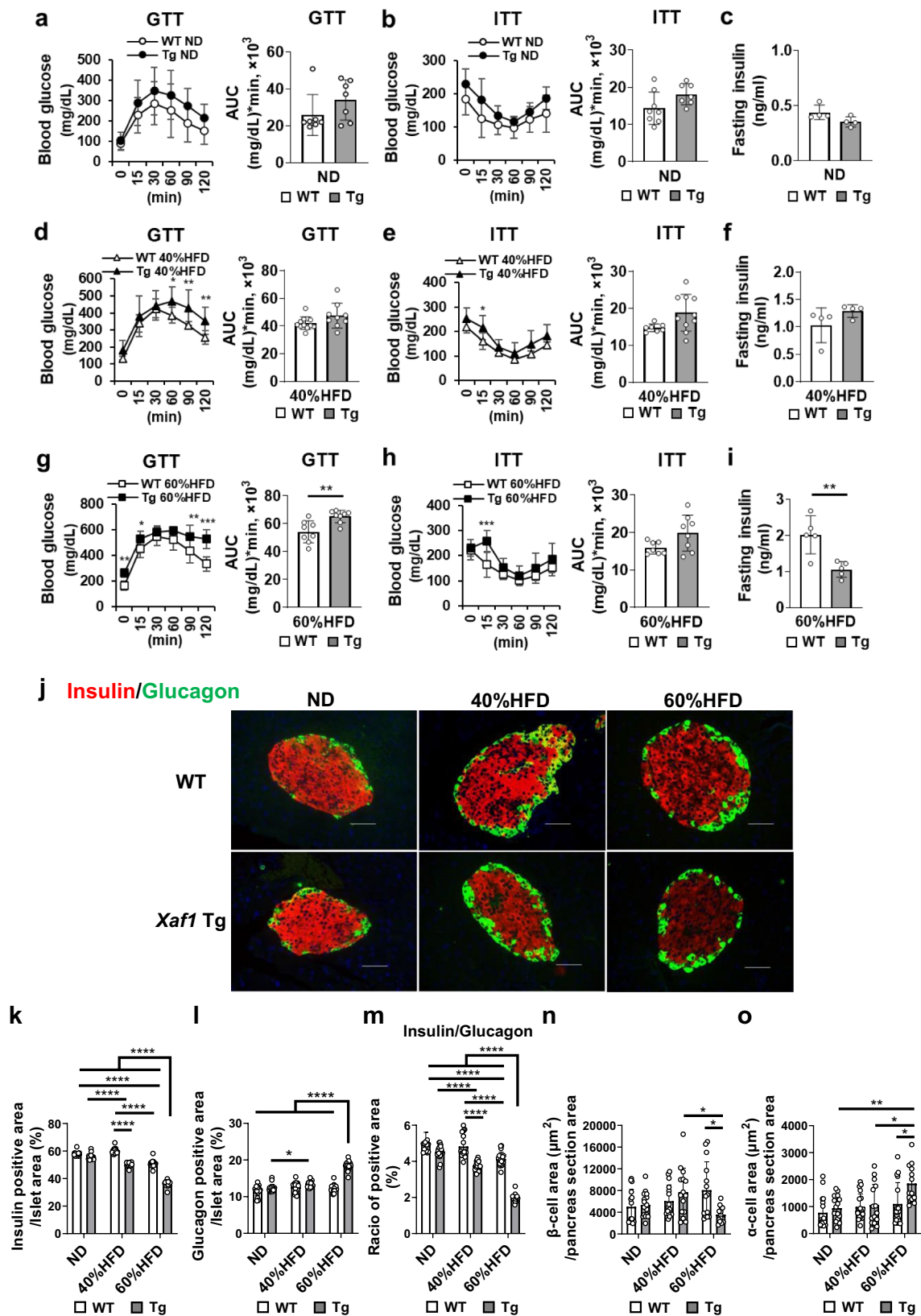


Fig. 4 High-fat diet-fed *Xaf1* Tg mice displayed attenuated insulin expression and impaired glucose tolerance compared with WT mice fed the same diet. Wild-type (WT) and *Xaf1* Tg (Tg) mice were fed with a normal diet (ND) up to 7 weeks of age after weaning. From 7 weeks of age, mice were fed an ND, a 40%, or a 60% high-fat diet (40%HFD, 60%HFD) for 10 weeks. **a, d, g** Glucose tolerance test (GTT) was performed in each group (**a**: $n=7$ [WT, *Xaf1* Tg], **d**: $n=12$ [WT], 9 [*Xaf1* Tg], **g**: $n=8$ [WT, *Xaf1* Tg]). **b, e, h** Insulin tolerance test (ITT) was performed in each group (**b**: $n=8$ [WT], 7 [*Xaf1* Tg], **e**: $n=7$ [WT], 10 [*Xaf1* Tg], **h**: $n=7$ [WT], 8 [*Xaf1* Tg]). AUC, area under the curve. **c, f, i** Fasting insulin levels in each test group (**c, f**: $n=4$ [WT, *Xaf1* Tg], **i**: $n=5$ [WT, *Xaf1* Tg]). **j** Representative images of immunofluorescence staining for insulin (red) and glucagon (green) of pancreatic sections. Scale bar = 50 μm , 40 \times magnification. **k–m** Quantification of the average (**k**) insulin- and (**l**) glucagon-positive areas per islet area. Quantification of average (**m**) ratio of insulin- to glucagon-positive areas per islet. **n, o** Quantification of the average (**n**) β -cell and (**o**) α -cell area per pancreas section. Data are expressed as mean \pm SD. Four animals in each group and 5 random islets per animal were quantified. * $p < 0.05$, ** $p < 0.01$, *** $p < 0.001$, **** $p < 0.0001$ (color figure online)

The islets of *Xaf1* Tg mice in the 60%HFD group exhibited a markedly decreased insulin-positive area, increased glucagon-positive area, and decreased ratio of insulin- to glucagon-positive areas (Fig. 4j–m), compared with those in the other diet groups. The islets of 40%HFD-fed *Xaf1* Tg mice displayed a significantly reduced insulin-positive area and ratio of insulin- to glucagon-positive areas compared with those in 40%HFD-fed WT and ND-fed *Xaf1* Tg mice (Fig. 4k, m). The insulin and glucagon positive area per islet area was quantified as previously reported [18, 19]. The insulin-positive area and ratio of insulin- to glucagon-positive areas were significantly decreased in the islets of WT mice in the 60%HFD group compared with those in the 40%HFD and ND groups (Fig. 4k, m). The β -cell area per pancreas section of 60%HFD-fed *Xaf1* Tg mice was significantly decreased compared with that of 60%HFD-fed WT mice. On the other hand, α -cell area per pancreas section of the group of 60%HFD-fed *Xaf1* Tg mice was significantly increased compared with those of 60%HFD-fed WT mice and other dietary groups of *Xaf1* Tg mice (Fig. 4n, o). Hematoxylin and eosin staining of the pancreatic tissues revealed decreased cell density in the islet area of *Xaf1* Tg mice in the 60%HFD group compared with those in the other five groups (Supplementary Fig. 3). No significant differences in islet size distribution were observed between WT and *Xaf1* Tg mice fed the same diet (Supplementary Fig. 4).

High-fat diet intake increased CD68⁺ and Ly6C⁺ cells in the islets of both WT and *Xaf1* Tg mice

Macrophage abundance is reportedly increased in the islets of mice fed HFD [20]. To examine the degree of macrophage infiltration in the islets, flow cytometric analysis and immunofluorescence staining was performed on islets

isolated from the pancreatic tissues of mice in each group. Few CD68⁺ macrophages and Ly6C⁺ inflammatory macrophages were observed in the islets of WT and *Xaf1* Tg mice in the ND group (Supplementary Fig. 5a–c). The number of CD68⁺ cells increased in WT and *Xaf1* Tg mice in the 40% and 60% HFD groups (Supplementary Fig. 5a–c). In the 60%HFD group, the number of CD68⁺Ly6C⁺ cells in the islets increased to almost the same extent in both WT and *Xaf1* Tg mice (Supplementary Fig. 5c).

High-fat diet intake enhanced β -cell apoptosis in *Xaf1* Tg mice compared with WT mice

We next examined the effects of XAF1 expression on apoptosis. Caspase-3 is a principal enzyme in the process of apoptosis. The islets of *Xaf1* Tg mice in the 60%HFD group exhibited a marked increase of cleaved caspase-3 protein expression compared with the other diet groups (Fig. 5a, b). In the islets of 60%HFD-fed WT mice, expression level of cleaved caspase-3 was significantly increased compared with that in the islets of WT mice in the 40%HFD or ND groups (Fig. 5a, b). After the expression of cleaved caspase-3, cells irreversibly undergo apoptosis. Detection of cleaved caspase-3 enables to recognize apoptosis earlier than the stage of DNA strand breaks. Thus, immunohistochemical detection of activated caspase-3 is a useful method for identification of early apoptosis in tissue sections [21]. To detect β -cell apoptosis, double immunofluorescence staining for cleaved caspase-3 and insulin was performed and the double-positive areas were quantified (Fig. 5c, d, Supplementary Fig. 6a, b). Since both cleaved caspase-3 and insulin are expressed in the cytosol, yellowish staining indicates co-localization. As shown in the magnified inset images, β -cells with insulin and cleaved caspase-3-positive cytosol were significantly increased in the islets of *Xaf1* Tg mice in the HFD groups compared with those of WT mice, which was proportional to the amount of dietary fat (Fig. 5c, d). In the islets of WT mice in the 60%HFD group, the cleaved caspase-3-positive β -cells were significantly increased compared to that in the islets of WT mice in the 40%HFD or ND groups (Fig. 5d). Thus, significantly increased β -cell apoptosis was observed in the HFD-fed group with enhanced XAF1 expression levels. To further confirm β -cell apoptosis, combined TUNEL staining and insulin immunofluorescence were conducted (Fig. 5e, f, Supplementary Fig. 7). As shown in the magnified inset image, β -cells with TUNEL-positive nuclei and insulin-positive cytosol were observed in the islets of *Xaf1* Tg mice in the 60%HFD group (Fig. 5e). The number of TUNEL-positive β -cells was fewer than cleaved caspase-3 positive cells, yet significantly increased in the pancreatic islets of *Xaf1* Tg mice in the 60%HFD group compared with the other groups (Fig. 5f). TUNEL detects DNA strand breaks in the late stage of apoptosis. However, cells with necrotic morphology are often stained vaguely [22, 23], or DNA fragmentation is even

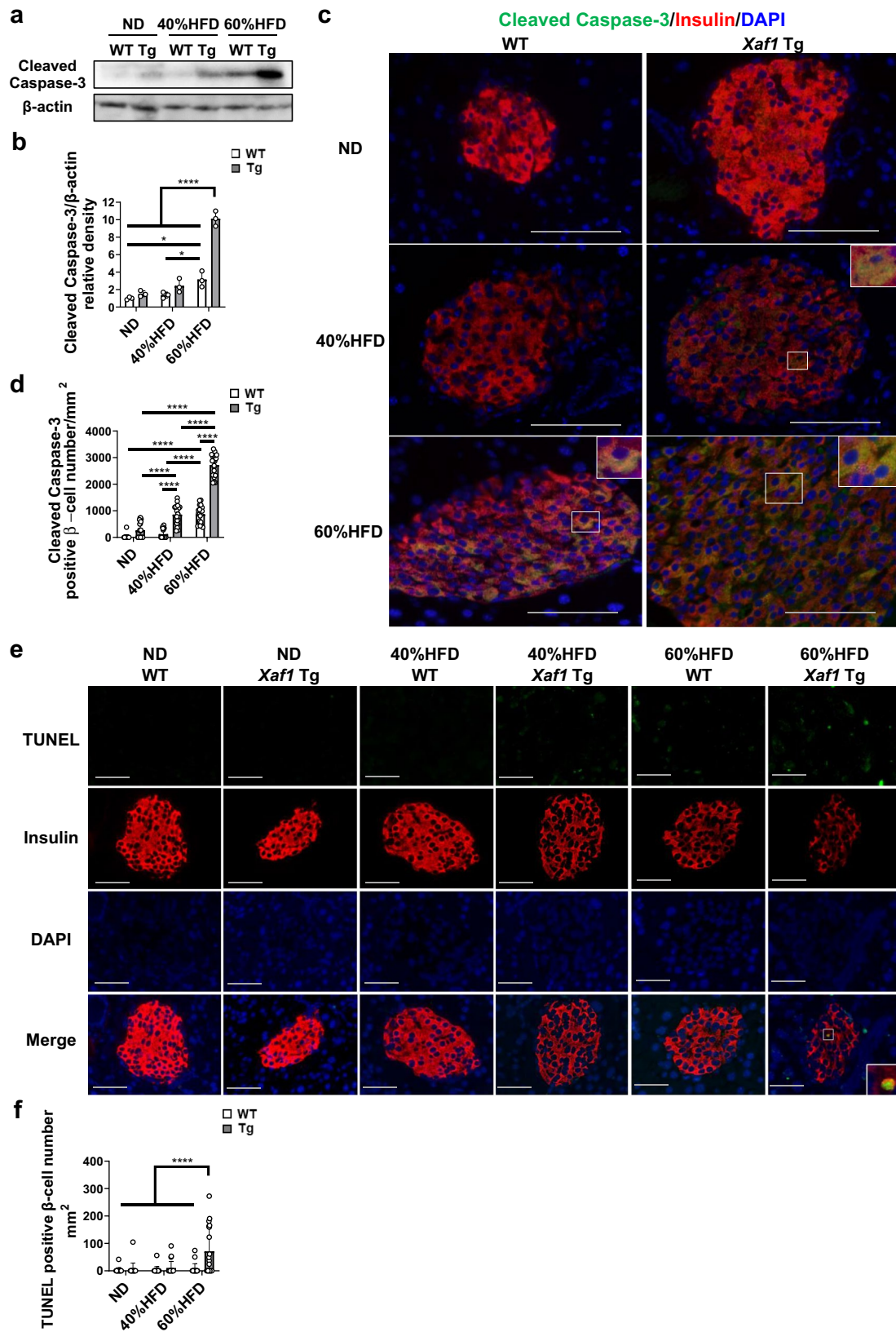


Fig. 5 High-fat diet intake enhanced β -cell apoptosis in *Xaf1* Tg mice compared with WT mice. Wild-type (WT) and *Xaf1* Tg (Tg) mice were fed with a normal diet (ND) up to 7 weeks of age after weaning. From 7 weeks of age, mice were fed an ND, a 40%, or a 60% high-fat diet (40%HFD, 60%HFD) for 10 weeks. **a** Western blot analysis of cleaved caspase-3 expression in islets of mice. Representative blots are shown. **b** Quantitative data of each corresponding western blot images from 3 independent experiments were presented as bar graphs. **c** Double immunofluorescence staining for cleaved caspase-3 (green) and insulin (red) in pancreatic sections. The double stained area for cleaved caspase-3 and insulin is shown in yellow. The magnified inset images indicate double stained β -cells. **d** The number of cleaved caspase-3 positive β -cells per islet area was quantified. Four animals in each group and 5 random islets per animal were quantified. **e** Representative images in each group via combined terminal deoxynucleotidyl transferase-mediated dUTP nick end labeling (TUNEL) staining and insulin immunofluorescence staining in pancreatic sections. The magnified inset image indicates a β -cell with TUNEL-positive nuclei and insulin-positive cytosol. **f** The number of TUNEL positive β -cells per islet area was quantified. Four animals in each group and 5 random islets per animal were quantified. Scale bar = 50 μ m, 40 \times magnification. Data are expressed as mean (SD). * $p < 0.05$, *** $p < 0.0001$ (color figure online)

absent or incomplete in induced apoptosis [24]. Therefore, our observation is consistent with the previous observation reporting the difficulty of accurately detecting TUNEL and insulin double positive cells [25].

Xaf1 Tg mice fed 60%HFD showed markedly impaired insulin secretion

The GTT revealed markedly impaired glucose tolerance in *Xaf1* Tg mice compared with WT mice in the 60%HFD group (Fig. 4g). Subsequently, we investigated serum insulin levels after glucose administration to evaluate the effect of XAF1 overexpression on insulin secretion capacity. In the ND and 40%HFD groups, serum insulin levels did not differ significantly after glucose administration between WT and *Xaf1* Tg mice (Fig. 6a, b). In contrast, serum insulin levels after glucose administration were markedly lower in *Xaf1* Tg mice than in WT mice in the 60%HFD group (Fig. 6c). To confirm the in vivo results, an insulin secretion assay was performed using organ-cultured pancreatic islets isolated from WT and *Xaf1* Tg mice (Fig. 6d, e, f) and calculated the stimulation index (Fig. 6g). Consistent with in vivo results, in the 60%HFD group, insulin secretion in *Xaf1* Tg mouse islets was severely impaired compared to that in WT mice upon stimulation with high doses of glucose (Fig. 6f, g).

Discussion

In this study, we demonstrated that macrophage expression of IFN β upon PA stimulation and intake of HFD promoted macrophage infiltration in pancreatic islets, thereby inducing increased XAF1 expression in mice. We previously

revealed that IFN β -induced XAF1 expression was elevated in β -cells in a receptor-dependent manner [12]. Collectively, the results confirmed that XAF1 expression in pancreatic β -cells was enhanced by consumption of HFD. Furthermore, HFD-fed *Xaf1* Tg mice demonstrated increased β -cell apoptosis, attenuated insulin expression, and impaired glucose tolerance compared with WT mice fed the same diet. These effects were more pronounced in 60%HFD group than in the 40%HFD-fed groups. These results clarified that HFD-induced enhancement of IFN β production in macrophages augments XAF1 expression in pancreatic β -cells, promotes β -cell apoptosis, and ultimately reduces insulin secretion. Serum IFN β levels were significantly increased in 60%HFD fed mice compared with those of ND and 40%HFD fed mice (Fig. 1c). Previously, it has been reported that correlation between systemic IFN β and triglyceride levels, and type I IFN/IFNAR axis may be positively correlated with individuals with obesity-associated hepatocellular disease [26]. To the best of our knowledge, this is the first study to demonstrate an association between HFD-induced pancreatic β -cell XAF1 expression and exacerbation of diabetes.

The effects of excess levels of circulating lipids, called lipotoxicity, on β -cell survival appear to be regulated by several distinct mechanisms. Several mediating factors of apoptosis have been suggested. The roles of endoplasmic reticulum stress in lipotoxicity have been demonstrated in multiple cell types, including β -cells [27, 28]. Jeffrey et al. reported that carboxypeptidase E degradation contributed to the elevation of palmitate-induced β -cell endoplasmic reticulum stress and apoptosis [27]. As shown in this study, β -cell apoptosis via the IFN β -XAF1 pathway was initiated from increased IFN β production by macrophages. IFN β secretion was upregulated in RAW264.7 macrophages upon PA stimulation (Fig. 1b). It cannot be ruled out that RAW264.7 macrophages may not respond like primary macrophages. *Ifn β* mRNA levels were significantly elevated in the islet of 60%HFD fed mice compared with ND fed mice (Fig. 1d). Considering the increase of the number of macrophages in islets of mice fed a high-fat diet, the source of the elevated *Ifn β* expression in islets may be macrophages.

Obesity-induced inflammation, characterized by an increased number of proinflammatory macrophages in adipose tissue, has been suggested to contribute to systemic insulin resistance [29]. Obesity-induced infiltration of macrophages has also been observed in pancreatic islets. β -cells reportedly secrete chemokines such as Monocyte chemoattractant protein 1 and chemokine (C-X-C motif) ligand 1 in response to toll-like receptor 4 ligand, PA, or lipopolysaccharide, all of which recruit proinflammatory macrophages into islets [12, 20].

The present study demonstrated that low-grade inflammation that causes macrophage activation under obesity conditions induces β -cell dysfunction and exacerbates diabetes

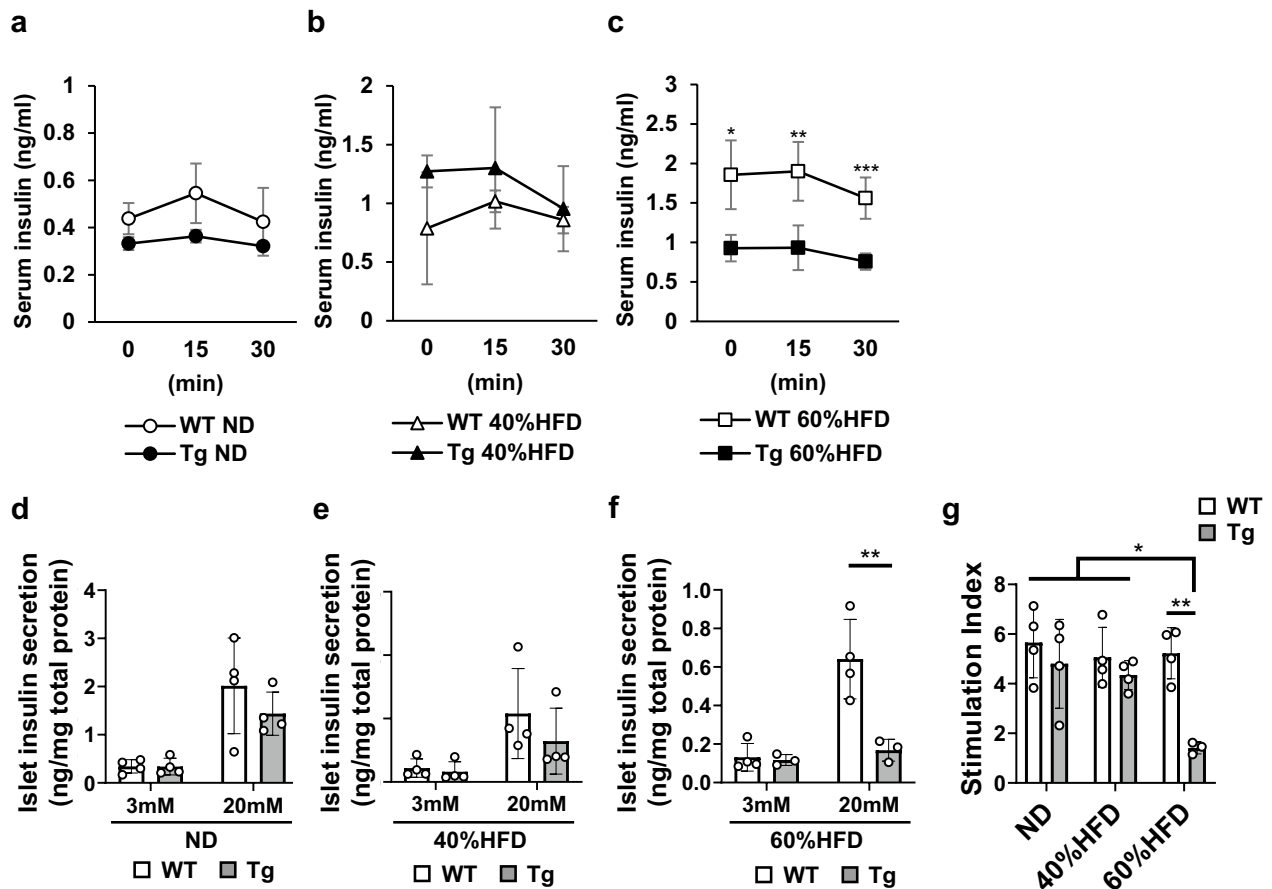


Fig. 6 *Xaf1* Tg mice fed 60%HFD showed markedly impaired insulin secretion. Wild-type (WT) and *Xaf1* Tg (Tg) mice were fed with a normal diet (ND) up to 7 weeks of age after weaning. From 7 weeks of age, mice were fed an ND, a 40%, or a 60% high-fat diet (40%HFD, 60%HFD) for 10 weeks. **a, b, c** Insulin response to intraperitoneal glucose administration (2 g/kg body weight). **d, e, f** Basal

and glucose-stimulated insulin secretion in islets isolated from WT and *Xaf1* Tg mice. **g** Stimulation index (SI) values. SI was calculated by dividing insulin concentrations at high (20 mM) glucose by that at low (3 mM) glucose. Representative data from three independent experiments are shown ($n=3-4$ per group). Data are expressed as mean (SD). * $p < 0.05$, ** $p < 0.01$, *** $p < 0.001$

due to enhanced β -cell apoptosis mediated by XAF1 expression, in addition to decreased insulin sensitivity through adipose tissue inflammation. This may be a newly clarified mechanism that causes an obesity-induced decrease in pancreatic β -cell mass. *Xaf1* Tg mice fed a 60%HFD displayed remarkably impaired glucose tolerance and progression of β -cell apoptosis compared to *Xaf1* Tg mice fed 40%HFD and ND. This result supports the hypothesis that elevated glucose and lipid levels synergistically induces a more detrimental glucolipotoxic state [30].

Several reports have suggested the critical involvement of IFN β and XAF1 in apoptosis. Enhancement of XAF1 expression by IFN β and subsequent apoptosis via the IFN β -XAF1 pathway has been reported in a colon cancer cell line and in germ cells [31, 32]. Other studies have demonstrated that XAF1 mediates apoptosis via the mitochondrial and p53 pathways, independently of XIAP interaction [33–35]. XAF1 plays a role as an apoptosis-promoting tumor

suppressor. In human malignancies, XAF1 expression is reportedly inactivated by aberrant promoter methylation and subsequent suppression of critical gene expression [36, 37]. Our previous study confirmed that *Xaf1*-knockdown attenuated IFN β -induced apoptosis in a mouse pancreatic β -cell line in vitro [12]. Therefore, targeting excess XAF1 expression in pancreatic β -cells may provide a therapeutic objective to prevent β -cell depletion in diabetes. However, direct suppression of XAF1 may influence the tumorigenesis signal of β -cells. Further verification of mechanisms such as IFN β signaling leading to XAF1 expression is required for clinical applications.

In conclusion, the present study clearly demonstrates that XAF1 expression in pancreatic β -cells via HFD-induced secretion of IFN β from macrophages promoted β -cell apoptosis, thereby leading to a reduction in insulin secretion and exacerbation of diabetes. The study findings provide valuable insight into the mechanism of pancreatic β -cell mass

reduction, a fundamental pathological feature of diabetes, to help establish therapeutic strategies against diabetes.

Supplementary Information The online version contains supplementary material available at <https://doi.org/10.1007/s00592-022-01930-y>.

Acknowledgements We appreciate the technical assistance from The Research Support Center, Research Center for Human Disease Modeling, Kyushu University Graduate School of Medical Sciences.

Author's contribution YN, MI, MH, YW, and TZ participated in data generation. YN and MI participated in data analysis and interpretation. TSh, AY, TF, TSanui, TSano, and TA: technical support and participated in review of the manuscript. MI and FN obtained the funding and participated in design of the study and wrote the manuscript. All authors reviewed the manuscript and approved the final version.

Funding This work was supported by JSPS KAKENHI, Grant Number JP19K10152 and JST SPRING, Grant Number JPMJSP2136.

Declarations

Conflict of interest The authors declare that they have no conflict of interest.

Ethical approval The animal study was reviewed and approved by Institutional Animal Care and Use Committee of the University of Kyushu (protocol #A20-101-0 and #1-7).

Informed consent For this type of study formal consent is not required.

Open Access This article is licensed under a Creative Commons Attribution 4.0 International License, which permits use, sharing, adaptation, distribution and reproduction in any medium or format, as long as you give appropriate credit to the original author(s) and the source, provide a link to the Creative Commons licence, and indicate if changes were made. The images or other third party material in this article are included in the article's Creative Commons licence, unless indicated otherwise in a credit line to the material. If material is not included in the article's Creative Commons licence and your intended use is not permitted by statutory regulation or exceeds the permitted use, you will need to obtain permission directly from the copyright holder. To view a copy of this licence, visit <http://creativecommons.org/licenses/by/4.0/>.

References

- Fasshauer M, Blüher M (2015) Adipokines in health and disease. *Trends Pharmacol Sci* 36(7):461–470. <https://doi.org/10.1016/j.tips.2015.04.014>
- Unamuno X, Gómez-Ambrosi J, Rodríguez A, Becerril S, Frühbeck G, Catalán V (2018) Adipokine dysregulation and adipose tissue inflammation in human obesity. *Eur J Clin Invest* 48(9):e12997. <https://doi.org/10.1111/eci.12997>
- Cani PD, Amar J, Iglesias MA, Poggi M, Knauf C, Bastelica D et al (2007) Metabolic endotoxemia initiates obesity and insulin resistance. *Diabetes* 56(7):1761–1772. <https://doi.org/10.2337/db06-1491>
- Ohn JH, Kwak SH, Cho YM, Lim S, Jang HC, Park KS et al (2016) 10-year trajectory of β -cell function and insulin sensitivity in the development of type 2 diabetes: a community-based prospective cohort study. *Lancet Diabetes Endocrinol* 4(1):27–34. [https://doi.org/10.1016/S2213-8587\(15\)00336-8](https://doi.org/10.1016/S2213-8587(15)00336-8)
- Hudish LI, Reusch JE, Sussel L (2019) β Cell dysfunction during progression of metabolic syndrome to type 2 diabetes. *J Clin Invest* 129(10):4001–4008. <https://doi.org/10.1172/JCI129188>
- Good AL, Stoffers DA (2020) Stress-induced translational regulation mediated by RNA binding proteins: key links to β -cell failure in diabetes. *Diabetes* 69(4):499–507. <https://doi.org/10.2337/dbi18-0068>
- Matsuda T, Kido Y, Asahara S, Kaisho T, Tanaka T, Hashimoto N et al (2010) Ablation of C/EBP β alleviates ER stress and pancreatic β cell failure through the GRP78 chaperone in mice. *J Clin Invest* 120(1):115–126. <https://doi.org/10.1172/JCI39721>
- Shirakawa J, Togashi Y, Sakamoto E, Kaji M, Tajima K, Orime K et al (2013) Glucokinase activation ameliorates ER stress-induced apoptosis in pancreatic β -cells. *Diabetes* 62(10):3448–3458. <https://doi.org/10.2337/db13-0052>
- Westermarck P, Andersson A, Westermarck GT (2011) Islet amyloid polypeptide, islet amyloid, and diabetes mellitus. *Physiol Rev* 91(3):795–826. <https://doi.org/10.1152/physrev.00042.2009>
- Tornovsky-Babeay S, Dadon D, Ziv O, Tzipilevich E, Kadosh T, Schyr-Ben Haroush R et al (2014) Type 2 diabetes and congenital hyperinsulinism cause DNA double-strand breaks and p53 activity in β cells. *Cell Metab* 19(1):109–121. <https://doi.org/10.1016/j.cmet.2013.11.007>
- Ehses JA, Perren A, Eppler E, Ribaux P, Pospisilik JA, Maor-Cahn R et al (2007) Increased number of islet-associated macrophages in type 2 diabetes. *Diabetes* 56(9):2356–2370. <https://doi.org/10.2337/db06-1650>
- Tsuruta M, Iwashita M, Shinjo T, Matsunaga H, Yamashita A, Nishimura F (2018) Metabolic endotoxemia-activated macrophages promote pancreatic β cell death via IFN β -Xaf1 pathway. *Horm Metab Res* 50(2):160–167. <https://doi.org/10.1055/s-0043-121467>
- Liston P, Fong WG, Kelly NL, Toji S, Miyazaki T, Conte D et al (2001) Identification of XAF1 as an antagonist of XIAP anti Caspase activity. *Nat Cell Biol* 3(2):128–133. <https://doi.org/10.1038/35055027>
- Hayashi M, Iwashita M, Nishimura Y, Shinjo T, Sano T, Yamashita A et al (2021) Adipose-specific C–C motif chemokine ligand (CCL) 19 overexpression drives the mice to both insulin resistance and weight gain. *BMJ Open Diabetes Res Care* 9(1):e001871. <https://doi.org/10.1136/bmjdr-2020-001871>
- Yamamotoya T, Nakatsu Y, Kushiyaama A, Matsunaga Y, Ueda K, Inoue Y et al (2017) Trk-fused gene (TFG) regulates pancreatic β cell mass and insulin secretory activity. *Sci rep* 7(1):13026. <https://doi.org/10.1038/s41598-017-13432-x>
- Wicksteed B, Brissova M, Yan W, Opland DM, Plank JL, Reinert RB et al (2010) Conditional gene targeting in mouse pancreatic β -Cells: analysis of ectopic Cre transgene expression in the brain. *Diabetes* 59(12):3090–3098. <https://doi.org/10.2337/db10-0624>
- Lee MG, Huh JS, Chung SK, Lee JH, Byun DS, Ryu BK et al (2006) Promoter CpG hypermethylation and downregulation of XAF1 expression in human urogenital malignancies: implication for attenuated p53 response to apoptotic stresses. *Oncogene* 25(42):5807–5822. <https://doi.org/10.1038/sj.onc.1209867>
- Park HS, Kim HZ, Park JS, Lee J, Lee SP, Kim H et al (2019) β -cell–derived angiotensin-1 regulates insulin secretion and glucose homeostasis by stabilizing the islet microenvironment. *Diabetes* 68(4):774–786. <https://doi.org/10.2337/db18-0864>
- Wang L, Luk CT, Cai EP, Schroer SA, Allister EM, Shi SY et al (2015) PTEN deletion in pancreatic α -cells protects against high-fat diet-induced hyperglucagonemia and insulin resistance. *Diabetes* 64(1):147–157. <https://doi.org/10.2337/db13-1715>

20. Eguchi K, Manabe I, Oishi-Tanaka Y, Ohsugi M, Kono N, Ogata F et al (2012) Saturated fatty acid and TLR signaling link β cell dysfunction and islet inflammation. *Cell Metab* 15(4):518–533. <https://doi.org/10.1016/j.cmet.2012.01.023>
21. Duan WR, Garner DS, Williams SD, Funckes-Shippy CL, Spath IS, Blomme EA (2003) Comparison of immunohistochemistry for activated caspase-3 and cleaved cytokeratin 18 with the TUNEL method for quantification of apoptosis in histological sections of PC-3 subcutaneous xenografts. *J Pathol* 199(2):221–228. <https://doi.org/10.1002/path.1289>
22. Gold R, Schmied M, Giegerich G, Breitschopf H, Hartung HP, Toyka KV et al (1994) Differentiation between cellular apoptosis and necrosis by the combined use of in situ tailing and nick translation techniques. *Lab Invest* 71(2):219–225
23. Perry SW, Epstein LG, Gelbard HA (1997) Simultaneous in situ detection of apoptosis and necrosis in monolayer cultures by TUNEL and trypan blue staining. *Biotechniques* 22(6):1102–1106. <https://doi.org/10.2144/97226st01>
24. Darzynkiewicz Z, Juan G, Li X, Gorczyca W, Murakami T, Traganos F (1997) Cytometry in cell necrobiology: analysis of apoptosis and accidental cell death (necrosis). *Cytometry* 27(1):1–20
25. Wang Z, York NW, Nichols CG, Remedi MS (2014) Pancreatic β cell dedifferentiation in diabetes and redifferentiation following insulin therapy. *Cell Metab* 19(5):872–882. <https://doi.org/10.1016/j.cmet.2014.03.010>
26. Chan CC, Damen MSMA, Moreno-Fernandez ME, Stankiewicz TE, Cappelletti M, Alarcon PC et al (2020) Type I interferon sensing unlocks dormant adipocyte inflammatory potential. *Nat Commun* 11(1):2745. <https://doi.org/10.1038/s41467-020-16571-4>
27. Jeffrey KD, Alejandro EU, Luciani DS, Kalynyak TB, Hu X, Li H et al (2008) Carboxypeptidase E mediates palmitate-induced β -cell ER stress and apoptosis. *Proc Natl Acad Sci U S A* 105(24):8452–8457. <https://doi.org/10.1073/pnas.0711232105>
28. White SA, Zhang LS, Pasula DJ, Yang YHC, Luciani DS (2020) Bax and Bak jointly control survival and dampen the early unfolded protein response in pancreatic β -cells under glucolipotoxic stress. *Sci Rep* 10(1):10986. <https://doi.org/10.1038/s41598-020-67755-3>
29. Boutens L, Stienstra R (2016) Adipose tissue macrophages: going off track during obesity. *Diabetologia* 59(5):879–894. <https://doi.org/10.1007/s00125-016-3904-9>
30. Poitout V, Amyot J, Semache M, Zarrouki B, Hagman D, Fontés G (2010) Glucolipotoxicity of the pancreatic beta cell. *Biochim Biophys Acta* 1801(3):289–298. <https://doi.org/10.1016/j.bbailip.2009.08.006>
31. Sun Y, Qiao L, Xia HH, Lin MC, Zou B, Yuan Y et al (2008) Regulation of XAF1 expression in human colon cancer cell by interferon β : activation by the transcription regulator STAT1. *Cancer Lett* 260(1–2):62–71. <https://doi.org/10.1016/j.canlet.2007.10.014>
32. Jiang X, Yin L, Zhang N, Han F, Liu WB, Zhang X et al (2018) Bisphenol A induced male germ cell apoptosis via IFN β -XAF1-XIAP pathway in adult mice. *Toxicol Appl Pharmacol* 355:247–256. <https://doi.org/10.1016/j.taap.2018.07.009>
33. Lee MG, Han J, Jeong SI, Her NG, Lee JH, Ha TK et al (2014) XAF1 directs apoptotic switch of p53 signaling through activation of HIPK2 and ZNF313. *Proc Natl Acad Sci U S A* 111(43):15532–15537. <https://doi.org/10.1073/pnas.1411746111>
34. Xia Y, Novak R, Lewis J, Duckett CS, Phillips AC (2006) Xaf1 can cooperate with TNF α in the induction of apoptosis, independently of interaction with XIAP. *Mol Cell Biochem* 286(1–2):67–76. <https://doi.org/10.1007/s11010-005-9094-2>
35. Pinto EM, Figueiredo BC, Chen W, Galvao HCR, Formiga MN, Fragoso MCBV et al (2020) XAF1 as a modifier of p53 function and cancer susceptibility. *Sci Adv* 6(26):eaba3231. <https://doi.org/10.1126/sciadv.aba3231>
36. Plenchette S, Cheung HH, Fong WG, LaCasse EC, Korneluk RG (2007) The role of XAF1 in cancer. *Curr Opin Investig Drugs* 8(6):469–476
37. Byun DS, Cho K, Ryu BK, Lee MG, Kang MJ, Kim HR et al (2003) Hypermethylation of XIAP-associated factor 1, a putative tumor suppressor gene from the 17p13.2 locus, in human gastric adenocarcinomas. *Cancer Res* 63(21):7068–7075

Publisher's Note Springer Nature remains neutral with regard to jurisdictional claims in published maps and institutional affiliations.