

Three new meiobenthic species from a submarine cave in Japan: *Echinoderes gama*, *E. kajiharai*, and *E. uozumii* (Kinorhyncha: Cyclorhagida)

Yamasaki, Hiroshi
Faculty of Arts and Science, Kyushu University

Fujimoto, Shinta
Research Center for Marine Biology, Graduate School of Life Sciences, Tohoku University

Tanaka, Hayato
Tokyo Sea Life Park

<https://hdl.handle.net/2324/4774181>

出版情報 : Journal of the Marine Biological Association of the United Kingdom. 100 (4), pp.537-558, 2020-06-15. Cambridge University Press

バージョン :

権利関係 :



Three new meiobenthic species from a submarine cave in Japan: *Echinoderes gama*, *E. kajiharai*, and *E. uozumii* (Kinorhyncha: Cyclorhagida)

Hiroshi Yamasaki^{1*}, Shinta Fujimoto², Hayato Tanaka³

1: Museum für Naturkunde, Leibniz Institute for Evolution and Biodiversity, Invalidenstr. 43,
D-10115 Berlin, Germany

2: Research Center for Marine Biology, Graduate School of Life Sciences, Tohoku University,
9 Sakamoto, Asamushi, Aomori 039–3501, Japan

3: Tokyo Sea Life Park, 6–2–3 Rinkai-cho, Edogawa-ku, Tokyo 134–8587, Japan

* Corresponding author

E-mail: h.yamasaki@meiobenthos.com

Running title: Three new *Echinoderes* from submarine cave in Japan

<http://zoobank.org/A1DB93C4-54AD-4440-AFF4-68B6B11DC953>

Abstract

Three new species of echinoderid kinorhynchs are described from Daidokutsu, a submarine cave in Ryukyu Islands, Japan. *Echinoderes gama* sp. nov. is characterized by the

presence of middorsal acicular spines on segments 4–8; lateroventral acicular spines on segments 7–9; lateroventral tubes on segment 5; sublateral tubes on segment 8; laterodorsal tubes on segment 10; and type-2 gland cell outlets in subdorsal and lateroventral position on segment 2. *Echinoderes kajiharai* sp. nov. is defined by the presence of middorsal acicular spines on segments 4, 6, 8; lateral accessory acicular spines on segment 9; lateroventral acicular spines on segments 6–8; lateroventral tubes on segments 2 and 5; midlateral tubes on segment 10; and type-2 gland cell outlets in laterodorsal position on segments 2 and 5, and subdorsal position on segments 8 and 9. *Echinoderes uozumii* sp. nov. is characterized by the presence of middorsal acicular spines on segments 4 and 6; lateroventral acicular spines on segments 6–9; lateroventral tubes on segments 2 and 5; sublateral tubes on segment 8; laterodorsal tubes on segment 10; type-2 gland cell outlets in subdorsal and lateral accessory position on segment 2; and blunt, short pectinate fringe teeth of primary pectinate fringe on segment 1. In addition, the *Echinoderes multiporus* species group including *E. kajiharai* sp. nov., and the *Echinoderes bispinosus* species group including *E. uozumii* sp. nov. are established. Furthermore, the distribution of the two species groups and the origin of *Echinoderes* species in Daidokutsu are discussed.

Keywords

Meiofauna; mud dragon; Scalidophora; stygofauna; taxonomy, Ryukyu Islands

INTRODUCTION

The species of the phylum Kinorhyncha (mud dragons) are exclusively meiobenthic, occur worldwide from tropical to polar regions and inhabit various marine environments such as sandy beaches, muddy sea floor, seamounts, deep sea, and submarine caves (Sørensen & Pardos, 2008; Neuhaus, 2013; Yamasaki, 2016; Sørensen *et al.* 2018; Yamasaki *et al.*, 2019). After the rearrangement of the classification system based on the recent molecular and morphological phylogenetic analyses, eleven families are recognized in the phylum (Sørensen *et al.*, 2015). Among the families, Echinoderidae represents the most speciose family, comprised of five genera and about 150 species (Sørensen *et al.*, 2015; Cepeda *et al.*, 2019a, b, c; Sánchez *et al.*, 2019; Varney *et al.*, 2019; Yamasaki *et al.*, 2019). Kinorhynch families, genera, and some species-groups comprised of closely related species are distributed worldwide (Neuhaus, 2013; Randsø *et al.*, 2019). On the other hand, species are mostly reported from single localities and only a few species have broad distribution patterns, i.e. *Echinoderes pterus* Yamasaki *et al.*, 2018 recorded from the Arctic Sea, Atlantic Ocean, and Mediterranean Sea and *Echinoderes unispinosus* Yamasaki *et al.*, 2018 from the Atlantic Ocean, Mediterranean Sea, and East Pacific Ocean (Sørensen *et al.*, 2018; Yamasaki *et al.*, 2018a, 2019). This general pattern of species being restricted to a confined geographic area is probably due to their low dispersal ability, or preference for

a specific habitat (Artois *et al.*, 2011; Sánchez *et al.*, 2011, 2012); it should be said however, that the scarcity of investigations could have prevented from unveiling an ampler distribution for some species.

Although kinorhynchs inhabit various marine environments, investigations of cave species have been scarcely carried out. Until now, kinorhynchs were found from twelve caves in the north Caribbean Sea, Canary Islands (Atlantic Ocean), western to middle Mediterranean Sea, Atolls of the Maldives (Indian Ocean), southern Japan (Pacific Ocean) and eastern Australia (Coral Sea) (Sánchez & Martínez, 2019). Of the specimens found in these caves, some were identified as putative taxa and others reported as belonging to the following eight nominal species: *Centroderes barbanigra* Neuhaus *et al.*, 2014; *Echinoderes cavernus* Sørensen *et al.*, 2000; *Echinoderes dujardinii* Claparède, 1863; *Leiocanthus bretti* Sánchez & Martínez, 2019; *Meristoderes macracanthus* Herranz *et al.*, 2012; *Pycnophyes kukulkani* Sánchez & Martínez, 2019; *Pycnophyes cf. zelinkaei* Southern, 1914; and *Ryuguderis iejimaensis* Yamasaki, 2016 (summarized in Sánchez & Martínez, 2019)

Daidokutsu is one of the most investigated submarine caves in the world. The cave is located in east coast of Iejima Island, Ryukyu Islands, Japan. The cave entrance opens at ca. 19 m depth on the reef slope, and the cave inside is about 40 m long, gradually deepening to ca. 30 m depth at its maximum (Kitamura *et al.*, 2007; Omori *et al.*, 2010; Yamamoto *et al.*,

2010). According to Omori *et al.* (2010), the cave has been completely submerged for 8000 years, under the influence of the sea-level rising after the last glacial period. The floor of the cave is covered by a layer of muddy sediment and many animals of various taxa have been found from the cave, for example, Tardigrada (Fujimoto, 2015; Fujimoto *et al.*, 2017; Fujimoto & Jimi, 2020), Ostracoda (Tabuki & Hanai, 1999; Chiu *et al.*, 2016), Mysida (Hanamura & Kase, 2001) and Mollusca (Kase & Hayami, 1992). The kinorhynch *Ryuguderres iejimaensis* has recently been described from this cave (Yamasaki, 2016).

In this study, three new *Echinoderes* species from Daidokutsu, as the second to fourth species of Kinorhyncha from this cave, are described. They also represent the ninth to eleventh record of kinorhynch species from the cave environment. We furthermore discuss the distribution patterns of two species groups in *Echinoderes* established in this study, and the origin and endemism of echinoderid kinorhynchs in the cave environment.

MATERIALS AND METHODS

An eight-liter-mud sediment sample was collected on 25 April 2015 by SCUBA at 28–30 m depth in the Daidokutsu submarine cave, Iejima Island, Okinawa, Japan (26° 43'29"N, 127° 49'52"E). Meiofaunal organisms including kinorhynchs were extracted from the sample by using the decantation method and the floatation method with Ludox® HS-40

(Higgins & Thiel, 1988; Giere, 2009) and preserved in 10% buffered formalin. The preserved organisms were subsequently transferred to 70% ethanol and sorted under a stereomicroscope.

Kinorhynch specimens for light microscopy (LM) were dehydrated in glycerol and mounted individually in Fluoromount G® between two cover slips (a 22 mm x 24 mm square cover slip and a circle cover slip 15 mm in diameter) attached to a plastic H-S slide (Shirayama *et al.*, 1993). The LM specimens were observed with either an Olympus BX51 microscope or a Zeiss Axioskop 50 microscope. A camera lucida equipped on the latter microscope was used to measure morphometrics of all the LM specimens and to make drafts for line art illustrations. The lengths of penile spines were not measured because the spines are so transparent that the correct lengths of them are difficult to measure, and also these lengths are not used as a taxonomic character in *Echinoderes* with the same reason. Final line art illustrations were drawn with Adobe Illustrator CS6 based on the drafts. Specimens were photographed with a Zeiss AxioCam MRc5 mounted on a Zeiss Axioplan 2 mot and an Axio Vs40 v.4.8.2.0 software.

Specimens for scanning electron microscopy (SEM) were transferred from ethanol to distilled water through a graded series of ethanol, postfixed with 1% OsO₄ in 0.05 M phosphate buffer (pH = 7.3) with 0.3 M sodium chloride and 0.05% sodium azide for 2.5 hours, dehydrated through a graded series of ethanol, critical-point dried with a BalTec CPD

030, mounted on aluminum stubs, sputter-coated with gold-palladium with a Polaron SC 7640, and observed with a Zeiss EVO LS 10 scanning electron microscope.

The map was drawn with the Generic Mapping Tools (GMT) (Wessel *et al.*, 2013), and subsequently modified with Adobe Illustrator CS6.

The terminology follows Neuhaus (2013). The classification system follows Sørensen *et al.* (2015). All specimens have been deposited in the invertebrate collection of the Hokkaido University Museum, Hokkaido University, Sapporo, Japan (catalogue numbers ICHUM 5976–5992).

RESULTS

SYSTEMATICS

Class CYCLORHAGIDA Zelinka, 1896

Order ECHINORHAGATA Sørensen *et al.*, 2015

Family ECHINODERIDAE Zelinka, 1894

Genus *Echinoderes* Claparède, 1863

Echinoderes gama sp. nov.

(Figures 1–4, Tables 1 and 2)

<http://zoobank.org/426C630B-1C0E-4CFF-8095-8C3AE3F0835D>

TYPE MATERIAL

Holotype: female, mounted in Fluoromount G® (ICHUM 5976), collected by HY and SF, at 28–30 m depth in Daidokutsu submarine cave, Iejima Island, Okinawa, Japan (26°43'29"N, 127°49'52"E), on 25 April 2015. Paratypes: four males and two females, mounted in Fluoromount G® (ICHUM 5977–5982), collection data as holotype.

ADDITIONAL MATERIAL EXAMINED

Three males mounted on aluminum stubs for SEM observations, collection data as holotype.

DIAGNOSIS

Echinoderes with middorsal acicular spines on segments 4–8; lateroventral acicular spines on segments 7–9; lateroventral tubes on segment 5; sublateral tubes on segment 8;

laterodorsal tubes on segment 10; type-2 gland cell outlets in subdorsal and lateroventral position on segment 2.

ETYMOLOGY

The species name comes from *gama* ('cave'), a word from the Okinawan local language, referring to the species' type locality.

DESCRIPTION

Adult with head, neck, and eleven trunk segments (Figures 1A–B, 2A–B & 3A).

Measurements and positions of cuticular structures (sensory spots, gland cell outlets, spines, tubes, and sieve plates) summarized in Tables 1 and 2, respectively.

Head consisting of retractable mouth cone and introvert. Arrangement of oral styles, scalids, and placids summarized in Figure 4. Mouth cone with inner oral styles and one ring of nine outer oral styles. Detailed arrangement of inner oral styles not examined. Each outer oral style consists of triangular distal and rectangular basal parts. Introvert composed of six rings of spinoscalids and one ring of trichoscalids (Figures 3B & 4). Ring 01 with ten primary spinoscalids, rings 02 and 04 with 10 spinoscalids, and rings 03 and 05 with 20 spinoscalids.

Each spinoscalid of rings 01–05 with basal sheath and end piece. Rings 06 not examined in detail, but with at least six spinoscalids. Six trichoscalids attached with trichoscalid plate in sectors 2, 4, 5, 7, 8, and 10.

Neck with 16 placids (Figures 1A, B, 2A–D, 3B & 4). Midventral placid broadest. Remaining placids similar in size. Two ventral and four dorsal trichoscalid plates present.

Segment 1 consisting of complete cuticular ring (Figure 1A–B). This and following ten segments with pachycyclus at anterior margin of each segment. Sensory spots in subdorsal and laterodorsal position (Figures 1A–B, 2C–D & 3C). Each sensory spot composed of one central pore and numerous micropapillae. Type-1 gland cell outlets present in middorsal and lateroventral position (Figures 1A–B & 2C–D). Cuticular hairs arising from perforation sites: most hairs located around sensory spots, and others sporadically on remaining dorsal area (Figures 1A, 2C & 3C). No cuticular hairs on ventral side (Figures 1B, 2D & 3D). Posterior part of this and following nine segments with primary pectinate fringe (Figures 1A–B & 3C–D). Pectinate fringe teeth on this segment long and slender.

Segment 2 with complete cuticular ring as segment 1 (Figure 1A–B). Middorsal, midlateral, ventromedial sensory spots present (Figures 1A–B, 2C–D & 3C–D). Each sensory spot of this and following segments consisting of one central pore and fewer micropapillae than those on segment 1. Type-1 gland cell outlets present in middorsal and ventromedial

positions (Figures 1A–B & 2D). Type-2 gland cell outlets in subdorsal and lateroventral positions (Figures 1A–B, 2C–D & 3C–D). Primary pectinate fringe as on preceding segment.

Segment 3 and following eight segments consisting of one tergal and two sternal plates (Figure 1A–B). Sensory spots present in subdorsal position (Figures 1A, 2C & 3C). Type-1 gland cell outlets in middorsal and ventromedial position (Figures 1A–B & 2D). Pectinate fringe teeth of primary pectinate fringe on this and following six segments as those on preceding segments, except for ventromedial area with conspicuously shorter teeth (Figures 1B & 3F).

Segment 4 with middorsal acicular spine (Figures 1A & 2C). Type-1 gland cell outlets present in paradorsal and ventromedial positions (Figures 1A–B & 2C–D).

Segment 5 with middorsal acicular spine and lateroventral tubes (Figures 1A–B, 2B–D & 3E–G). Sensory spots in subdorsal position (Figures 1A, & 2C). Type-1 gland cell outlets in paradorsal and ventromedial positions (Figures 1A–B & 2C–D).

Segment 6 with middorsal acicular spine (Figures 1A & 2C). Sensory spots present in paradorsal, midlateral, and ventromedial positions (Figures 1A–B, 2C–D & 3F–G). Type-1 gland cell outlets in paradorsal and ventromedial positions (Figures 1A–B & 2D).

Segment 7 with middorsal and lateroventral acicular spines (Figures 1A–B, 2C–G & 3E–H). Sensory spots present in paradorsal and midlateral positions (Figures 1A–B, 2C–D &

3G). Type-1 gland cell outlets in paradorsal and ventromedial positions (Figures 1A–B & 2D).

Segment 8 with middorsal and lateroventral acicular spines, and sublateral tubes (Figures 1A–B, 2A, C–G & 3H). Sensory spots present in paradorsal position (Figures 1A & 2E). Type-1 gland cell outlets in paradorsal and ventromedial positions (Figures 1A–B & 2D, F).

Segment 9 with lateroventral acicular spines (Figures 1, 2B, F–G & 3H–I). Paradorsal, laterodorsal, and ventrolateral sensory spots present (Figures 1, 2E–G & 3H–I). Type-1 gland cell outlets in paradorsal and ventromedial positions (Figures 1 & 2F). Small sieve plates present in sublateral position (Figures 1, 2E–G & 3H).

Segment 10 with laterodorsal tubes (Figures 1A, C, 2E & 3J). Laterodorsal tubes in males longer than those in females (Table 1). Subdorsal and ventrolateral sensory spots present (Figures 1, 2E–G & 3I). Two middorsal type-1 gland cell outlets aligned in tandem (Figure 1A, C). Additional pair of type-1 gland cell outlets present in ventromedial position (Figures 1B & 2F). Pectinate fringe teeth of primary pectinate fringe thinner and shorter than those on preceding segment (Figures 1 & 3I).

Segment 11 with lateral terminal spines (Figures 1, 2A–B, E–G & 3I–J). Three pairs of penile spines present in males: dorsal and ventral pairs long and tube-like, whereas middle one stout and triangular-shaped (Figures 1C, 2G & 3J). Lateral terminal accessory spines

present in females (Figures 1A & 2A, E). Subdorsal sensory spots present (Figure 1A, C).

Type-1 gland cell outlet present middorsally (Figures 1A, C & 2E). Posterior edge of tergal plate protruding subdorsally, forming short pointed tergal extensions (Figure 1). Posterior edges of sternal plates rounded (Figures 1B, D, 2F & 3I).

REMARKS

Although the presence of the middorsal acicular spines on segments 4–8 is the most common middorsal-spine pattern in the genus shared by 59 of 127 species, *E. gama* sp. nov. differs from them in the arrangement of the lateroventral acicular spines. Most of the 59 species have lateroventral acicular spines on segments 6–9, whereas only three species lack lateroventral acicular spines on segment 6, namely *Echinoderes eximus* Higgins & Kristensen, 1988, *Echinoderes lusitanicus* Neves *et al.*, 2016, and *Echinoderes tchefouensis* Lou, 1934 (Higgins & Kristensen, 1988; Sørensen *et al.*, 2012; Neves *et al.*, 2016; Grzelak & Sørensen, 2018). Nevertheless, *E. gama* sp. nov. can be easily distinguished from them in the presence of the lateroventral acicular spines on segment 7, which are absent in the three species.

Echinoderes kajiharai sp. nov.

(Figures 5–8, Tables 3 and 4)

<http://zoobank.org/565F2D87-B7D9-4DE2-9AA8-DAAD41ABD575>

TYPE MATERIAL

Holotype: male, mounted in Fluoromount G® (ICHUM 5983), collected by HY and SF, at 28–30 m depth in Daidokutsu submarine cave, Iejima Island, Okinawa, Japan (26°43'29"N, 127°49'52"E), on 25 April 2015. Paratypes: four males, mounted in Fluoromount G® (ICHUM 5984–5987), collection data as holotype.

ADDITIONAL MATERIAL EXAMINED

Two males and one female mounted on aluminum stubs for SEM observations, collection data as holotype.

DIAGNOSIS

Echinoderes with middorsal acicular spines on segments 4, 6, and 8; lateral accessory

acicular spines on segment 9; lateroventral acicular spines on segments 6–8; lateroventral tubes on segments 2 and 5; midlateral tubes on segment 10; type-2 gland cell outlets in laterodorsal position on segments 2 and 5, and subdorsal position on segments 8 and 9.

ETYMOLOGY

The species epithet is named after Dr. Hiroshi Kajihara, a Japanese taxonomist, for his great contributions to taxonomy, as well as for always supporting and encouraging the first author's research.

DESCRIPTION

Adult with head, neck, and eleven trunk segments (Figures 5, 6A & 7A).

Measurements presented in Table 3. Positions of cuticular structures (sensory spots, gland cell outlets, spines, tubes, and sieve plates) summarized in Table 4.

Head consisting of retractable mouth cone and introvert (Figure 7B). Arrangement of oral styles, scalids, and placids shown in Figure 4. Mouth cone with inner oral styles and one ring of nine outer oral styles (Figure 7C). Detailed arrangement of inner oral styles not examined. Each outer oral style consists of triangular distal and rectangular basal parts

(Figure 7B–C). Introvert composed of six rings of spinoscalids and one ring of trichoscalids (Figure 7D). Ring 01 with ten primary spinoscalids, rings 02 and 04 with 10 spinoscalids, and rings 03 and 05 with 20 spinoscalids. Each spinoscalid of rings 01–05 with basal sheath and end piece. Rings 06 not examined in detail, but with at least six spinoscalids. Six trichoscalids attached with trichoscalid plate in sectors 2, 4, 5, 7, 8, and 10.

Neck with 16 placids (Figures 5 & 6B–C), of which midventral one broadest, and remaining ones of similar size. Two ventral and four dorsal trichoscalid plates (Figure 5).

Segment 1 consisting of complete cuticular ring (Figures 5 & 6B–C). This and following ten segments with thick pachycyclus at anterior margin of each segment. Sensory spots in subdorsal and midlateral positions (Figures 5B, 6B & 7E). Each sensory spot composed of one central pore and numerous micropapillae. Type-1 gland cell outlets present in middorsal and lateral accessory positions (Figures 5 & 6B–C). Cuticular hairs arising from perforation sites covering entire segment except for ventromedial area on this and following nine segments (Figures 5, 6B–C & 7E–F). Posterior part of this segment and following nine segments with primary pectinate fringe (Figures 5 & 7E–F).

Segment 2 with complete cuticular ring as segment 1 (Figures 5 & 6B–C). Lateroventral tubes present (Figures 5A, 6C & 7F). Sensory spots in middorsal, midlateral, and ventromedial positions (Figures 5, 6B–C & 7E–F). Type-1 gland cell outlets present in

middorsal and ventromedial positions (Figures 5 & 6C). Type-2 gland cell outlets located laterodorsally (Figures 5B, 6B & 7E).

Segment 3 and following eight segments consisting of one tergal and two sternal plates (Figure 5). Sensory spots present in subdorsal position (Figures 5B, 6B & 7E). Type-1 gland cell outlets as on preceding segment.

Segment 4 with middorsal acicular spine (Figures 5B, 6A–B, D & 7G). Paradorsal sensory spots beside base of middorsal acicular spine (Figures 5B, 6B, D & 7G). Type-1 gland cell outlets present in subdorsal and ventromedial positions (Figures 5 & 6B–D).

Segment 5 with lateroventral tubes (Figures 5A & 6C). Sensory spots situated midlaterally (Figures 5, 6B, D & 7G). Type-1 gland cell outlets as on preceding segment. Type-2 gland cell outlet present on laterodorsal position (Figures 5B, 6B, D & 7G).

Segment 6 with middorsal and lateroventral acicular spines (Figures 5, 6A, D, 7A, G–H & 8A). Sensory spots present in paradorsal, midlateral, and ventromedial positions (Figures 5, 6D, 7G–H & 8A). Type-1 gland cell outlets present as on segment 4.

Segment 7 with lateroventral acicular spines (Figures 5A, 6F, 7H & 8A). Sensory spots in ventromedial position (Figures 5A, 6F, 7H & 8A). Type-1 gland cell outlets as on segment 4.

Segment 8 with middorsal and lateroventral acicular spines (Figures 5, 6A, D–F, 7A & 8B–C). Sensory spots in subdorsal and laterodorsal positions (Figures 5, 6D–F & 8B–C). Type-1 gland cell outlets as on segment 4. Subdorsal type-2 gland cell outlet present (Figures 5B, 6D–E & 8B–C).

Segment 9 with lateral accessory acicular spines (Figures 5, 6F & 8B–C, E), of which position may not be fully clear when specimen observed in improper orientation. Paradorsal, laterodorsal, and ventrolateral sensory spots present (Figures 5, 6E–F & 8B–C). Type-1 gland cell outlets as on segment 4. Type-2 gland cell outlets present subdorsally (Figures 5B, 6E & 8B–C). Small sieve plates present in sublateral position (Figures 5 & 6F).

Segment 10 with midlateral tubes (Figures 5, 6E–F & 8D–E). Sensory spots in subdorsal and ventrolateral positions (Figures 5, 6E–F & 8E–F). Two type-1 gland cell outlets in middorsal position (Figure 5B). Additional pair of type-1 gland cell outlets present ventromedially (Figures 5A & 6F).

Segment 11 with lateral terminal spines (Figures 5, 6A, E–F, 7A & 8D–F). Two pairs of penile spines present in males, and pair of lateral terminal accessory spines in females (Figures 5A, 6F & 8D–F). Subdorsal sensory spots present (Figures 5B & 8E). Posterior edge of tergal plate protruding subdorsally, forming long pointed tergal extensions (Figures 5, 6F & 8E–F). Posterior edges of sternal plates rounded (Figures 5A, 6F & 8F).

REMARKS

Among the congeners, *E. kajiharai* sp. nov. is the most similar to *Echinoderes multiporus* Yamasaki *et al.*, 2018 and *Echinoderes schwieringae* Yamasaki *et al.*, 2019 by sharing the presence of (1) middorsal acicular spines on segments 4, 6, 8, (2) lateroventral/ventrolateral tubes on segments 2 and 5, (3) lateral accessory/lateroventral acicular spines on segments 6–9, (4) midlateral tubes on segment 10, and (5) subdorsal/laterodorsal type-2 gland cell outlets at least on segments 2, 5, 8, and 9. The combination of these similarities suggests that they might be closely related to each other, representing the *Echinoderes multiporus* species group, like as the *Echinoderes coulli* species group and the *Echinoderes spinifurca* species group (see e.g., Sørensen *et al.*, 2018; Randsø *et al.*, 2019; Varney *et al.*, 2019). The presence/absence of female-specific ventrolateral/ventromedial papillae in *E. kajiharai* sp. nov. could not be confirmed due to the lack of female specimens for LM observation. However, the presence of the papillae both in *E. multiporus* and *E. schwieringae* suggests that the female papillae are probably present in *E. kajiharai* sp. nov. as well, making it another diagnostic feature for the *E. multiporus* species group.

The members of the *E. multiporus* species group can be distinguished from each

other by the position and the number of the type-2 gland cell outlets. *Echinoderes multiporus* has the highest number of the outlets, namely in the subdorsal position on segment 2 and the laterodorsal position on segments 4–9 (Yamasaki *et al.*, 2018b). *Echinoderes schwieringae* possesses the subdorsal outlets on segments 2 and 4, and the laterodorsal outlets on segments 5 and 7–9 (Yamasaki *et al.*, 2019). *Echinoderes kajiharai* sp. nov., on the other hand, has the lowest number of the outlets, i.e., laterodorsally on segments 2 and 5, and subdorsally on segments 8 and 9.

Echinoderes kajiharai sp. nov., further differs from the other two species of the *E. multiporus* species group in the position of acicular spines on segment 9. The spines on segment 9 in *E. kajiharai* sp. nov. are positioned more laterally than those on the preceding segments, locating them in lateral accessory position, whereas in *E. multiporus* and *E. schwieringae*, the spines on segment 9 are in lateroventral position as those on the preceding segments.

Echinoderes uozumii sp. nov.

(Figures 9–13, Tables 5 and 6)

<http://zoobank.org/3FAC9678-E067-45CB-AB98-ADF634367E97>

TYPE MATERIAL

Holotype: female, mounted in Fluoromount G® (ICHUM 5988), collected by HY and SF, at 28–30 m depth in Daidokutsu submarine cave, Iejima Island, Okinawa, Japan (26°43'29"N, 127°49'52"E), on 25 April 2015. Paratypes: one male and three females, mounted in Fluoromount G® (ICHUM 5989–5992), collection data as holotype.

ADDITIONAL MATERIAL EXAMINED

One male and seven females mounted on aluminum stubs for SEM observations, collection data as holotype.

DIAGNOSIS

Echinoderes with middorsal acicular spines on segments 4 and 6; lateroventral acicular spines on segments 6–9; lateroventral tubes on segments 2 and 5; sublateral tubes on segment 8; laterodorsal tubes on segment 10; type-2 gland cell outlets in subdorsal and lateral accessory positions on segment 2; pectinate fringe teeth of primary pectinate fringe on segment 1 with blunt tip, and conspicuously shorter than those on following segments.

ETYMOLOGY

The species is named after Ryosuke Uozumi for his contribution to the ecological study of kinorhynchs in Uozumi *et al.* (2018).

DESCRIPTION

Adult with head, neck, and eleven trunk segments (Figures 9A–B, 10A & 11A).

Measurements shown in Table 5. Positions of cuticular structures (sensory spots, gland cell outlets, spines, tubes, and sieve plates) summarized in Table 6.

Head consisting of retractable mouth cone and introvert (Figure 11A–D).

Arrangement of oral styles and scalids summarized in Figure 12. Mouth cone with inner and outer oral styles (Figure 11B–C). Detail of inner oral styles not observed. Nine outer oral styles present in one ring. Each outer oral style consists of triangular distal and rectangular basal part (Figure 11C). Introvert composed of six rings of spinoscalids and one ring of trichoscalids (Figure 11D). Each spinoscalid of ring 01–05 consisting of basal sheath and distal end piece. Ring 01 with ten primary spinoscalids, with longest distal end pieces among all spinoscalids. Rings 02 and 04 with 10 spinoscalids; rings 03 and 05 with 20 spinoscalids.

Rings 06 with at least eight shortest spinoscalids. Spinoscalids of ring 06 in sectors 5 and 7 not examined. Six trichoscalids attached with trichoscalid plate in sectors 2, 4, 5, 7, 8, and 10. Each trichoscalid covered with hairs.

Neck with 16 placids (Figures 9A–B & 10B–C). Midventral placid broadest. Remaining placids similar in size. Two trichoscalid plates present ventrally and four dorsally.

Segment 1 consisting of complete cuticular ring (Figures 9A–B & 10B–C). This and following ten segments with thick pachycyclus at anterior margin of each segment. Sensory spots in subdorsal, laterodorsal, and ventromedial positions (Figures 9A–B, 10B–C & 11E–G). Each sensory spot on this and following nine segments composed of one central pore and numerous micropapillae, and surrounded by one to three cuticular hairs. Type-1 gland cell outlets present in middorsal and lateroventral positions (Figures 9A–B & 10B–C). Cuticular hairs arising from perforation sites sporadically covering this segment (Figures 9A–B, 10B–C & 11E–G). Posterior part of this segment with primary pectinate fringe, with short and blunt pectinate fringe teeth (Figures 9A–B & 11E–G).

Segment 2 with complete cuticular ring as segment 1 (Figures 9A–B & 10B–C). Lateroventral tubes present (Figures 9A & 11G). Sensory spots present: one in middorsal, two pairs in laterodorsal, and one pair in ventromedial positions (Figures 9A–B, 10B–C & 11E–G). Type-1 gland cell outlets present in middorsal and ventromedial positions (Figures 9A–B

& 1C). Type-2 gland cell outlets in subdorsal and lateral accessory positions (Figures 9A–B, 10A–C & 11E–G). Cuticular hairs as in segment 1. Primary pectinate fringe on this and following eight with medium-length pectinate fringe teeth (Figures 9A–B & 11E–G).

Segment 3 and following eight segments consisting of one tergal and two sternal plates (Figures 9A–B & 10B–C). Sensory spots present in subdorsal and midlateral positions (Figures 9A–B, 10B–C, 11E–G & 13A–B). Type-1 gland cell outlets as on preceding segment. Cuticular hairs on this and following seven segments more densely aligned than those on preceding segments (Figures 9A–B, 10A–B, 11E–G & 13A–B).

Segment 4 with middorsal acicular spine (Figures 9B, 10A–B, 11E–F, 13A–B). Type-1 gland cell outlets present in paradorsal and ventromedial positions (Figures 9A–B & 10C).

Segment 5 with lateroventral tubes (Figures 9A, 10C–D & 13C). Sensory spots in subdorsal, midlateral, and ventromedial positions (Figures 9A–B, 10B–D & 13A–C). Type-1 gland cell outlets as in segment 2.

Segment 6 with middorsal and lateroventral acicular spines (Figures 9A–B, 10A–E & 13C–E). Sensory spots present in paradorsal, midlateral, and ventromedial positions (Figures 9A–B, 10B–D & 13C–E). Type-1 gland cell outlets present as on segment 4.

Segment 7 with lateroventral acicular spines (Figures 9A, 10D & 13C, F). Sensory spots in subdorsal, midlateral, and ventromedial positions (Figures 9A–B, 10D–E & 13C–F).

Type-1 gland cell outlets as on segment 2.

Segment 8 with sublateral tubes and lateroventral acicular spines (Figures 9A, 10D & 13E–G). Sensory spots in paradorsal position (Figures 9B, 10E & 13D–E). Type-1 gland cell outlets as on segment 4.

Segment 9 with lateroventral acicular spines (Figures 9A, C, 10D & 13F–G). Paradorsal, subdorsal, midlateral, and ventrolateral sensory spots present (Figures 9, 10D–E & 13F–G). Type-1 gland cell outlets as on segment 4. Small sieve plates present in sublateral position (Figures 9 & 13F).

Segment 10 with laterodorsal tubes (Figures 9B, D & 13H). Length of laterodorsal tubes in males longer than those in females (Table 5). Subdorsal and ventrolateral sensory spots present (Figures 9, 10D–E & 13G–H). Two middorsal type-1 gland cell outlets aligned in tandem (Figures 9B, D & 10E). Additional pair of type-1 gland cell outlets present in ventromedial position (Figures 9A, C & 10D).

Segment 11 with lateral terminal spines (Figures 9, 10A, F–G, 11A & 13H–J). Three pairs of penile spines present in males (Figures 9C–D, 10G & 13J). Dorsal and ventral penile spines long and tube-like, whereas middle ones stout and triangular-shaped. One pair of lateral terminal accessory spines present in females (Figures 9A–B, 10F & 13H–I). Paradorsal sensory spots present (Figures 9B, D & 13H). Two type-1 gland cell outlet present

middorsally (Figure 9B, D). Posterior edge of tergal plate forming triangular tergal extensions (Figures 9 & 13H–J). Posterior edges of sternal plates rounded.

REMARKS

The presence of the middorsal acicular spines only on segments 4 and 6 is an uncommon feature within *Echinoderes*. This trait is shared only by *E. uozumii* sp. nov., *Echinoderes astridae* Sørensen, 2014, and *Echinoderes bispinosus* Higgins, 1982 (Higgins, 1982; Sørensen, 2014). Among the three species, *E. uozumii* sp. nov. and *E. astridae* differ from *E. bispinosus* by the presence of sublateral tubes on segment 8. However, *E. uozumii* sp. nov. and *E. astridae* are identical in the spine/tube pattern, except for the presence/absence of laterodorsal tubes on segment 10. The arrangement of the type-2 gland cell outlets is also identical for the two species. The most prominent difference between the two species is the primary pectinate fringe on segment 1. In *E. uozumii* sp. nov., the pectinate fringe teeth of primary pectinate fringe on segment 1 are short and blunt, obviously differing in shape in comparison with those on following segments. While in *Echinoderes astridae*, the pectinate fringe teeth on segment 1 are medium-length and sharp-angled, which are similar in shape to those on following segments (Sørensen, 2014). Additional differences are (1) the presence/absence of some sensory spots (*E. uozumii* sp. nov. has one or two more pairs of

sensory spots on segments 2, 3, 5, 9–11 than *E. astridae*), (2) trunk length (202–229 µm in *E. uozumii* sp. nov., whereas 276–312 µm in *E. astridae*), and (3) relative length of lateral terminal spine (142–146 µm representing 63–70% of trunk length in *E. uozumii* sp. nov., whereas 127–132 µm representing 42–46% of trunk length in *E. astridae* (Sørensen, 2014).

Two additional species resemble *E. uozumii* sp. nov. in having the middorsal acicular spines on segments 4 and 6: *Echinoderes* aff. *bispinosus* reported from the coast of Turkey by Sönmez *et al.* (2016) and *Echinoderes* sp. 1 from Singapore by Sørensen *et al.* (2016).

Although the former was identified as “*E. aff. bispinosus*” in the original record by Sönmez *et al.* (2016), Sørensen *et al.* (2016) suggested “*E. aff. bispinosus*” is similar to *E. bispinosus* but would represent an undescribed species. In comparison with the brief descriptions provided for the two species, *E. uozumii* sp. nov. differs from the two at least in the presence of the type-2 gland cell outlets in subdorsal and lateral accessory positions on segment 2 (Sönmez *et al.*, 2016; Sørensen *et al.*, 2016). In addition, *E. uozumii* sp. nov. differs from *Echinoderes* sp. 1 in Sørensen *et al.* (2016) in having lateroventral acicular spines on segment 7 (Sørensen *et al.*, 2016).

All the above-mentioned species, including three known, one new, and two undescribed species, share several morphological features: the presence of (1) middorsal acicular spines on segments 4 and 6, (2) lateroventral/ventrolateral tubes on segments 2 and 5,

and (3) lateroventral acicular spines at least on segments 6, 8, and 9. These similarities suggest the close relationship of the three species, composing the *Echinoderes bispinosus* species group.

DISCUSSION

Wide geographic distributions of *E. multiporus*- and *E. bispinosus*-species groups

Despite their low motility and lack of a planktonic larval stage, many meiofauna distributed quite widely and this phenomenon is referred as the “meiofauna paradox” (Higgins & Thiel, 1988; Giere, 2009; Cerca *et al.*, 2018). Recent investigations have revealed that the meiofauna paradox is present in Kinorhyncha at species-group or species level (Neuhaus & Sørensen, 2013; Herranz & Leander, 2016; Yamasaki *et al.*, 2018a; Randsø *et al.*, 2019; Yamasaki *et al.*, 2019). This is also the case for the *E. multiporus* species group and the *E. bispinosus* species group (Figure 14).

With regard to the *E. multiporus* species group, *E. multiporus* and *E. schwieringae* have been recorded from seamounts: the former was from the summit to slope of Eratosthenes Seamount in East Mediterranean Sea and from the slope of Senghor Seamount in Northeast Atlantic Ocean (Yamasaki *et al.* 2018b, 2019); the latter was found on the summit of Senghor

Seamount in Northeast Atlantic Ocean (Yamasaki *et al.* 2019). *Echinoderes kajiharai* sp. nov., on the other hand, was from the Daidokutsu submarine cave in Northwest Pacific Ocean (this study), so the distribution of the species group seems to be even wider than what was previously supposed.

Concerning the *E. bispinosus* species group, all the congeners inhabit shallow waters in low-latitude regions: *E. bispinosus* was described from Bermuda, North Atlantic Ocean (Higgins, 1982); *E. astridae* was described from the Brazilian coast, Southwest Atlantic Ocean (Sørensen, 2014), and more recently reported in the Hispaniola Island in the Caribbean Sea (Cepeda *et al.*, 2019c); “*Echinoderes* aff. *bispinosus*” was reported from a Turkish beach, East Mediterranean Sea (Sönmez *et al.*, 2016); *Echinoderes* sp. 1 in Sørensen *et al.* (2016) was from Singapore coast, South China Sea (Sørensen *et al.*, 2016); and *E. uozumii* sp. nov. from the Daidokutsu submarine cave, Northwest Pacific Ocean (this study). The last finding expands the species group’s distribution range to the East Asian region.

Recent findings of widely distributed species/species groups of Kinorhyncha have drawn interest to how these wide distribution patterns were formed. Until now, three mechanisms have been proposed. The first mechanism is the dispersal by oceanic currents (Neuhaus & Sørensen, 2013; Yamasaki *et al.*, 2014; Ishii *et al.*, 2016). This would occur for kinorhynchs in association with suspension in the water column (Yamasaki *et al.* 2014),

drifting itself by regulating its hydrophilic mucus secretion (Ishii *et al.*, 2016), and rafting on other drifting organisms and substrates (Yamasaki *et al.*, 2014). The second mechanism is the dispersal affected by human activity (Herranz & Leander, 2016). An intertidal kinorhynch, *Echinoderes ohtsukai* Yamasaki & Kajihara, 2012, was supposedly introduced to British Columbia, Canada, associated with the oyster cultivation (Herranz & Leander, 2016). The third mechanism suggests that the past tectonic drifting produced present days wide-distribution of kinorhynchs (Randsø *et al.*, 2019). The wide distribution pattern of *Echinoderes coulli* species group is considered to be created under the effect of the plate tectonics since the Devonian (Randsø *et al.*, 2019). In case of the *E. multiporus* species group, at least the second mechanism of artificial invasion can be rejected, because there have been no fishery cultivation in their habitats, i.e., seamounts and a submarine cave, as well as the considerably small impact of human activity. Whereas for the *E. bispinosus* species group, none of the three mechanisms can be ruled out. Further analyses of their phylogenetic relationships within the group are required to support/reject the remaining mechanisms.

Origin and endemism of echinoderid fauna in Daidokutsu

Animals living in submarine caves often show high endemism and unique features in fauna, morphology, and phylogenetic relationship (Moldovan *et al.*, 2018). This endemism

and uniqueness have been caused by an isolation of the cave environment from open waters, and attracted researchers to study their origin, adaptation, and evolution in the cave environment (Moldovan *et al.*, 2018). Nevertheless, investigations of kinorhynchs in caves have been scarcely conducted. So far, only eight species have been known from the cave environment, three of which represent the species of Echinoderidae, i.e., *E. cavernus*, *E. dujardinii*, and *M. macracanthus* (Riedl 1966; Sørensen *et al.*, 2000; Dal Zotto & Todaro, 2016). Among the three species, only *E. cavernus* is exclusively known from the cave environment, whereas the other two have been reported both inside and outside of caves (Sánchez & Martínez, 2019). Based on these echinoderid records from caves made so far, it would be rather plausible to regard most cave-dwelling representatives of *Echinoderes* as not endemic to the cave environment.

The three species described in this study, *E. gama* sp. nov., *E. kajiharai* sp. nov., and *E. uozumii* sp. nov., have been found only from Daidokutsu. However, the scarce knowledge of kinorhynch fauna outside of the cave does not allow us to reject the possibility that they inhabit other neighboring environment outside of Daidokutsu. Because Daidokutsu is a young submarine cave, which submerged ca. 8000 years ago (Omori *et al.*, 2010), the three kinorhynchs arguably invaded the cave relatively recently from the neighboring waters, for instance from muddy bottom (similar sediment type of the cave) of open waters, under

overhangs, or even other caves in the Ryukyu Islands. Considering their recent invasion to the Daidokutsu, they may still inhabit such environments outside of the Daidokutsu also. It also can be assumed that *E. kajiharai* sp. nov. and *E. uozumii* sp. nov. can survive in non-cave environment, because all the other congeners of the *E. multiporus* and the *E. bispinosus* species groups, inhabit non-cave environment. For now, we cannot conclude whether the three new species exclusively inhabit caves. Further investigations in the neighboring environment of the Daidokutsu, and phylogenetic analyses of the *E. multiporus* and the *E. bispinosus* species groups will shed light on their endemism and migration process into the cave.

ACKNOWLEDGMENTS

We greatly appreciate Mr K. Yasumura for his help collecting sediment samples; and Dr M. V. Sørensen and an anonymous reviewer for reviewing the manuscript and providing helpful comments.

FINANCIAL SUPPORT

This study was supported by a grant from the Fujiwara Natural History Public Interest Incorporated Foundation to HY; a KAKENHI Grant (15K18598) from the Japan Society for the Promotion of Science to HY; and Japan Society for the Promotion of Science Grant-in-Aid

for JSPS fellows (Grant No. 25987) to SF.

REFERENCES

Artois T, Fontaneto D, Hummon WD, McInnes SJ, Todaro MA, Sørensen MV and

Zullini A (2011) 13. Ubiquity of microscopic animals? Evidence from the morphological approach in species identification. In: Fontaneto D. (ed)

Biogeography of Microscopic Organisms: Is Everything Small Everywhere?

Cambridge: Cambridge University Press, pp. 244–283.

Cepeda D, Álvarez-Castillo L, Hermoso-Salazar M, Sánchez N, Gómez S and Pardos

(2019a) Four new species of Kinorhyncha from the Gulf of California, eastern Pacific Ocean. *Zoologischer Anzeiger* **282**, 140–160.

Cepeda D, Pardos F, Sánchez N (2019b) Kinorhyncha from the Caribbean, with the

description of two new species from Puerto Rico and Barbados. *Zoologischer Anzeiger* **282**, 127–139.

Cepeda D, Sánchez N and Pardos F (2019c) First extensive account of the phylum

Kinorhyncha from Haiti and the Dominican Republic (Caribbean Sea), with the description of four new species. *Marine Biodiversity* **49**, 2281–2309.

- Cerca J, Purschke G and Struck TH** (2018) Marine connectivity dynamics: clarifying cosmopolitan distributions of marine interstitial invertebrates and the meiofauna paradox. *Marine Biology* **165**, 123.
- Chiu W, Yasuhara M, Iwatani H, Kitamura A and Fujita K** (2017) Response of subtropical submarine-cave ecosystem to Holocene cave development and Asian monsoon variability. *Paleobiology* **43**, 425–434.
- Claparède ARE** (1863) Zur Kenntnis der Gattung *Echinoderes* Duj. *Beobachtungen über Anatomie und Entwicklungsgeschichte wirbelloser Thiere an der Küste von Normandie angestellt, vol. 119*. Leipzig: Verlag von Wilhelm Engelmann.
- Dal Zotto M and Todaro MA** (2016) Kinorhyncha from Italy, a revision of the current checklist and an account of the recent investigations. *Zoologischer Anzeiger* **265**, 90–107.
- Fujimoto S** (2015) *Quisarctus yasumurai* gen. et sp. nov. (Arthrotardigrada: Halechiniscidae) from a submarine cave, off Iejima, Ryukyu Islands, Japan. *Zootaxa* **3948**, 145–450.
- Fujimoto S and Jimi N** (2020) A new marine tardigrade genus and species (Arthrotardigrada, Styraconyxidae) with unique pockets on the legs. *Zoosystematics and Evolution* **96**, 115–122.

- Fujimoto S, Jørgensen A and Hansen JG** (2017) A molecular approach to arthrotardigrade phylogeny (Heterotardigrada, Tardigrada). *Zoologica Scripta* **46**, 496–505.
- Giere O** (2009) *Meiobenthology. The microscopic motile fauna of aquatic sediments*. 2nd edition. Berlin: Springer Verlag.
- Grzelak K and Sørensen MV** (2018) New species of *Echinoderes* (Kinorhyncha: Cyclorhagida) from Spitsbergen, with additional information about known Arctic species *Marine Biology Research* **14**, 113–147.
- Hanamura Y and Kase T** (2001) A new species of *Heteromysoides* (Mysidacea: Mysidae) from submarine caves of Okinawa, southwestern Japan, with a key to the world species. *Crustacean Research* **30**, 65–71.
- Herranz M and Leander BS** (2016) Redescription of *Echinoderes ohtsukai* Yamasaki and Kajihara, 2012 and *E. kozloffii* Higgins, 1977 from the northeastern Pacific coast, including the first report of a potential invasive species of kinorhynch. *Zoologischer Anzeiger* **265**, 108–126.
- Herranz M, Thormar J, Benito J, Sánchez N and Pardos F** (2012) *Meristoderes* gen. nov., a new kinorhynch genus, with the description of two new species and their implications for echinoderid phylogeny (Kinorhyncha: Cyclorhagida, Echinoderidae). *Zoologischer Anzeiger* **251**, 161–179.

Higgins RP (1982) Three new species of Kinorhyncha from Bermuda. *Transactions of the American Microscopical Society* **101**, 305–316.

Higgins RP and Kristensen RM (1988) Kinorhyncha from Disko Island, West Greenland. *Smithsonian Contributions to Zoology* **458**, 1–55.

Higgins RP and Thiel H (1988) *Introduction to the Study of Meiofauna*. Washington DC: Smithsonian Institution Press.

Ishii D, Yamasaki H, Uozumi R and Hirose E (2016) Does the kinorhynch have a hydrophobic body surface? Measurement of the wettability of a meiobenthic metazoan. *Royal Society Open Science* **3**, 160512.

Kase T and Hayami I (1992) Unique submarine cave mollusc fauna: composition, origin and adaptation. *Journal of Molluscan Studies* **58**, 446–449.

Kitamura A, Hiramoto M, Kase T, Yamamoto N, Mariko A and Ohashi S (2007) Changes in cavernicolous bivalve assemblages and environments within a submarine cave in the Okinawa Islands during the last 5,000 years. *Paleontological Research* **11**, 163–182.

Lou TH (1934) Sur la presence d'un nouveau kinorhynque a Tchefou: *Echinoderes tchefouensis* sp. nov. *Contributions from the Institute of Zoology, National Academy*

of *Peiping* **1**, 1–9.

Moldovan OT, Kováč E and Stuart H (2018) *Cave Ecology*. Cham: Springer Nature

Switzerland AG

Neuhaus B (2013) 5. Kinorhyncha (=Echinodera). In: Schmidt-Rhaesa A. (ed) *Handbook of*

Zoology. Gastrotricha. Cycloneuralia and Gnathifera. Vol. 1. Nematomorpha.

Priapulida. Kinorhyncha. Loricifera. Berlin: Walter de Gruyter, pp. 177–348.

Neuhaus B, Pardos F, Sørensen MV and Higgins RP (2014) New species of *Centroderes*

(Kinorhyncha: Cyclorhagida) from the Northwest Atlantic Ocean, life cycle, and

ground pattern of the genus. *Zootaxa* **3901**, 1–69.

Neuhaus B and Sørensen MV (2013) Populations of *Campyloderes* sp. (Kinorhyncha,

Cyclorhagida): One global species with significant morphological variation?

Zoologischer Anzeiger **252**, 48–75.

Neves RC, Sørensen MV and Herranz M (2016) First account on kinorhynchs from

Portugal, with the description of two new species: *Echinoderes lusitanicus* sp. nov.

and *E. reicherti* sp. nov. *Marine Biology Research* **12**, 455–470.

Omori A, Kitamura A, Fujita K, Honda K and Yamamoto N (2010) Reconstruction of

light conditions within a submarine cave during the past 7000 years based on the

temporal and spatial distribution of algal symbiont-bearing large benthic

foraminifers. *Palaeogeography, Palaeoclimatology, Palaeoecology* **292**, 443–452.

Randsø PV, Yamasaki H, Bownes S, Herranz M, Di Domenico M, Qi GB and Sørensen

MV (2019) Phylogeny of the *Echinoderes coulli*-group (Kinorhyncha; Cyclorhagida, Echinoderidae) – a cosmopolitan species group trapped in the intertidal. *Invertebrate Systematics* **33**, 501–517.

Riedl R (1966) *Biologie der Meereshöhlen*. Hamburg and Berlin: Verlag Paul Parey.

Sánchez N, Herranz M, Benito J and Pardos F (2012) Kinorhyncha from the Iberian

Peninsula: new data from the first intensive sampling campaigns. *Zootaxa* **3402**, 24–44.

Sánchez N and Martínez A (2019) Dungeons and dragons: Two new species and records of

Kinorhyncha from anchialine cenotes and marine lava tubes. *Zoologischer Anzeiger* **282**, 161–175.

Sánchez N, Pardos F, Herranz M and Benito J (2011) *Pycnophyes dolichurus* sp. nov. and

P. aulacodes sp. nov. (Kinorhyncha, Homalorhagida, Pycnophyidae), two new kinorhynchs from Spain with a reevaluation of homalorhagid taxonomic characters. *Helgoland Marine Research* **65**, 319–334.

Sánchez N, Pardos F and Martínez Arbizu P (2019) Deep-sea Kinorhyncha diversity of the polymetallic nodule fields at the Clarion-Clipperton Fracture Zone (CCZ).

Zoologischer Anzeiger **282**, 88–105.

Shirayama Y, Kaku T and Higgins RP (1993) Double-sided microscopic observation of meiofauna using an HS-slide. *Benthos Research* **44**, 41–44.

Sönmez S, Köroğul NÖ and Karaytuğ S (2016) First record of the family Echinoderidae Zelinka, 1894 (Kinorhyncha: Cyclorhagida) from Turkish marine waters. *Biharean Biologist* **10**, 8–11.

Sørensen MV (2014) First account of echinoderid kinorhynchs from Brazil, with the description of three new species. *Marine Biodiversity* **44**, 251–274.

Sørensen MV, Dal Zotto M, Rho HS, Herranz M, Sánchez N, Pardos F and Yamasaki H (2015) Phylogeny of Kinorhyncha based on morphology and two molecular loci. *PLoS One* **10**, e0133440.

Sørensen MV, Gąsiorowski L, Randsø PV, Sánchez N and Neves RC (2016) First report of kinorhynchs from Singapore, with the description of three new species. *Raffles Bulletin of Zoology* **64**, 3–27.

Sørensen MV, Jørgensen A and Boesgaard TM (2000) A new *Echinoderes* (Kinorhyncha:

Cyclorhagida) from a submarine cave in New South Wales, Australia. *Cahiers de Biologie Marine* **41**, 167–179.

Sørensen MV and Pardos F (2008) Kinorhynch systematics and biology—an introduction to the study of kinorhynchs: inclusive identification keys to the genera. *Meiofauna Marina* **16**, 21–73.

Sørensen MV, Rho HS, Min WG, Kim D and Chang CY (2012) An exploration of *Echinoderes* (Kinorhyncha: Cyclorhagida) in Korean and neighboring waters with the description of four new species and a redescription of *E. tchefouensis* Lou, 1934. *Zootaxa* **3368**, 161–196.

Sørensen MV, Rohal M and Thistle D (2018) Deep-sea Echinoderidae (Kinorhyncha: Cyclorhagida) from the Northwest Pacific. *European Journal of Taxonomy* **456**, 1–75.

Southern R (1914) Clare Island Survey. Nematelmia, Kinorhyncha, and Chaetognatha. *Proceedings of the Royal Irish Academy* **31**, 1–80.

Tabuki R and Hanai T (1999) A new sigillid ostracod from submarine caves of the Ryukyu Islands, Japan. *Palaeontology* **42**, 596–593.

Uozumi R, Yamasaki H and Hirose E (2018) Mangrove forests may serve as stable

environments for the meiobenthic *Echinoderes komatsui* (Kinorhyncha:

Cyclorhagida): distribution patterns and population dynamics in a subtropical

estuary. *Marine Biology Research* **14**, 321–333.

Varney RM, Funch P, Kocot KM and Sørensen MV (2019) A new species of *Echinoderes*

(Cyclorhagida: Echinoderidae) from the San Juan Islands, Washington State, USA,

and insights into the kinorhynch transcriptome. *Zoologischer Anzeiger* **282**, 52–63.

Wessel P, Smith WHF, Scharroo R, Luis J, Wobbe F (2013) Generic mapping tools:

improved version released. *Eos, Transactions American Geophysical Union* **94**, 409–

410.

Yamamoto N, Kitamura A, Irino T, Kase T and Ohashi S (2010) Climatic and hydrologic

variability in the East China Sea during the last 7000 years based on oxygen isotope

records of the submarine cavernicolous micro-bivalve *Carditella iejimensis*. *Global*

and Planetary Change **72**, 131–140.

Yamasaki H (2016) *Ryuguderes iejimaensis*, a new genus and species of Campyloderidae

(Xenosomata: Cyclorhagida: Kinorhyncha) from a submarine cave in the Ryukyu

Islands, Japan. *Zoologischer Anzeiger* **265**, 69–79.

Yamasaki H, Grzelak K, Sørensen MV, Neuhaus B and George KH (2018a) *Echinoderes*

pterus sp. n. showing a geographically and bathymetrically wide distribution pattern

on seamounts and on the deep-sea floor in the Arctic Ocean, Atlantic Ocean, and the Mediterranean Sea (Kinorhyncha, Cyclorhagida). *Zookeys* **771**, 15–40.

Yamasaki H, Hiruta SF, Kajihara H and Dick MH (2014) Two kinorhynch species (Cyclorhagida, Echinoderidae, *Echinoderes*) show different distribution patterns across Tsugaru Strait, northern Japan. *Zoological Science* **31**, 421–429.

Yamasaki H and Kajihara H (2012) A new brackish-water species of *Echinoderes* (Kinorhyncha: Cyclorhagida) from the Seto Inland Sea, Japan. *Species Diversity* **17**, 109–118.

Yamasaki H, Neuhaus B and George KH (2018b) New species of *Echinoderes* (Kinorhyncha: Cyclorhagida) from Mediterranean seamounts and from the deep-sea floor in the Northeast Atlantic Ocean, including notes on two undescribed species. *Zootaxa* **4387**, 541–566.

Yamasaki H, Neuhaus B and George KH (2019) Echinoderid mud dragons (Cyclorhagida: Kinorhyncha) from Senghor Seamount (NE Atlantic Ocean) including general discussion of faunistic characters and distribution patterns of seamount kinorhynchs. *Zoologischer Anzeiger* **282**, 64–87.

Zelinka C (1894) Über die Organisation von *Echinoderes*. *Verhandlungen der Deutschen Zoologischen Gesellschaft* **4**, 46–49.

Zelinka C (1896) Demonstration der Tafeln der *Echinoderes*-Monographie. *Verhandlungen der Deutschen Zoologischen Gesellschaft* **6**, 197–199.

Figure captions

Fig. 1. *Echinoderes gama* sp. nov., camera lucida drawings. A, B, holotype, female (ICHUM 5976), whole animal, dorsal and ventral view, respectively; C, D, paratype male (ICHUM 5977), segments 9–11, dorsal and ventral view, respectively. Abbreviations: gco1/2, type-1/2 gland cell outlet; ldt, laterodorsal tube; ltas, lateral terminal accessory spine; lts, lateral terminal spine; lvs, lateroventral acicular spine; lvt, lateroventral tube; mds, middorsal acicular spine; pe, penile spine; si, sieve plate; slt, sublateral tube; ss, sensory spot; trp, trichoscalid plate.

Fig. 2. *Echinoderes gama* sp. nov., Nomarski photomicrographs. A, C–F, holotype, female (ICHUM 5976); B, G, paratype, male (ICHUM 5977). A, head, neck, and segments 1–11, dorsal view; B, head, neck, and segments 1–11, ventral view; C, neck and segments 1–8, dorsal view; D, neck and segments 1–8, ventral view; E, segments 7–11, dorsal view; F, segments 7–11, ventral view; G, segments 7–11, ventral view. Black arrows, white arrowheads, and black arrowheads indicate sensory spots, type-1 gland cell outlets, and type-2 gland cell outlets, respectively. Numbers after abbreviations indicate corresponding segment number. Abbreviations: he, head; ldt, laterodorsal tube; ltas, lateral terminal accessory spine; lts, lateral terminal spine; lvs, lateroventral acicular spine; lvt, lateroventral tube; mds,

middorsal acicular spine; ne, neck; pe, penile spine; si, sieve plate; slt, sublateral tube; tr, trunk.

Fig. 3. *Echinoderes gama* sp. nov., males, scanning electron micrographs. A, segments 1–11, lateral view (left side); B, head, ventral view; C, segments 1–3, lateral view (left side); D, segments 1–3, ventral view; E, segments 5–7, lateral view (right side); F, segments 5–7, ventral view; G, segments 3–7, lateral view (left side); H, segments 8 and 9 (left side); I, segments 9–11, ventral view; J, segments 10 and 11, lateral view (left side). Black arrows point to sensory spots and white/black arrowheads mark type-1/2 gland cell outlets. Numbers after abbreviations indicate corresponding sector/ring of head part or segment number of trunk part. Abbreviations: ldt, laterodorsal tube; lts, lateral terminal spine; lvs, lateroventral acicular spine; lvt, lateroventral tube; mds, middorsal acicular spine; mvp, midventral placid; pe, penile spine; psp, primary spinoscalid; sec, sector; si, sieve plate; slt, sublateral tube; sp, spinoscalid; trp, trichoscalid plate; trs, trichoscalid.

Fig. 4. *Echinoderes gama* sp. nov. and *Echinoderes kajiharai* sp. nov., polar diagram of mouth cone, introvert, and placids. Grey shaded area shows mouth cone and bold bent bars symbolize placids. The Table lists the scalid arrangement by sector.

Fig. 5. *Echinoderes kajiharai* sp. nov., camera lucida drawings. A, B, holotype, male (ICHUM 5983), whole animal, ventral and dorsal view, respectively. Abbreviations: gco1/2, type-1/2 gland cell outlet; las, lateral accessory acicular spine; lts, lateral terminal spine; lvs, lateroventral acicular spine; lvt, lateroventral tube; mds, middorsal acicular spine; mlt, midlateral tube; pe, penile spine; si, sieve plate; ss, sensory spot; trp, trichoscalid plate.

Fig. 6. *Echinoderes kajiharai* sp. nov., Nomarski photomicrographs, holotype, male (ICHUM 5983). A, head, neck, and segments 1–11, dorsal view; B, neck and segments 1–5, dorsal view; C, neck and segments 1–5, ventral view; D, segments 4–8, dorsal view; E, segments 7–11, dorsal view; F, segments 7–11, ventral view. Black arrows, white arrowheads, and black arrowheads indicate sensory spots, type-1 gland cell outlets, and type-2 gland cell outlets, respectively. Numbers after abbreviations indicate corresponding segment number.

Abbreviations: he, head; las, lateral accessory acicular spine; lts, lateral terminal spine; lvs, lateroventral acicular spine; lvt, lateroventral tube; mdp, middorsal placid; mds, middorsal acicular spine; mlt, midlateral tube; mvp, midventral placid; ne, neck; pe, penile spine; si, sieve plate; te, tergal extension; tr, trunk.

Fig. 7. *Echinoderes kajiharai* sp. nov., males, scanning electron micrographs. A, head, neck, and segments 1–11, lateroventral view (left side); B, head, lateral view (left side); C, mouth cone, lateral view (left side); D, introvert, lateroventral view (left side); E, segments 1–3, laterodorsal view (left side); F, segments 1–3, ventral view; G, segments 4–6, laterodorsal view (left side); H, left sternal plates on segments 6 and 7. Black arrows point to sensory spots and black arrowheads mark type-2 gland cell outlets. Numbers after abbreviations indicate corresponding sector/ring of head part or segment number of trunk part.

Abbreviations: he, head; int, introvert; ios, inner oral style; lts, lateral terminal spine; lvs, lateroventral acicular spine; lvt, lateroventral tube; mc, mouth cone; mds, middorsal acicular spine; ne, neck; oos, outer oral style; psp, primary spinoscalid; sec, sector; sp, spinoscalid; tr, trunk; trp, trichoscalid plate; trs, trichoscalid.

Fig. 8. *Echinoderes kajiharai* sp. nov., males (A, C, D, F) and female (B, E), scanning electron micrographs. A, segments 6 and 7, ventral view; B, segments 8 and 9, lateral view (left side); C, segments 8 and 9, lateral view (left side); D, segments 10 and 11, lateral view (left side); E, segments 10 and 11, lateral view (left side); F, segments 10 and 11, ventral view. Black arrows point to sensory spots and black arrowheads mark type-2 gland cell outlets. Numbers after abbreviations indicate segment number. Abbreviations: lts, lateral terminal

accessory spine; lts, lateral terminal spine; las, lateral accessory acicular spine; lvs, lateroventral acicular spine; mds, middorsal acicular spine; mlt, midlateral tube; pe, penile spine; te, tergal extension.

Fig. 9. *Echinoderes uozumii* sp. nov., camera lucida drawings. A, B, holotype, female (ICHUM 5988), whole animal, ventral and dorsal view, respectively; C, D, paratype male (ICHUM 5989), segments 9–11, ventral and dorsal view, respectively. Abbreviations: gco1/2, type-1/2 gland cell outlet; ldt, laterodorsal tube; ltas, lateral terminal accessory spine; lts, lateral terminal spine; lvs, lateroventral acicular spine; lvt, lateroventral tube; mds, middorsal acicular spine; pe, penile spine; si, sieve plate; slt, sublateral tube; ss, sensory spot; trp, trichoscalid plate.

Fig. 10. *Echinoderes uozumii* sp. nov., Nomarski photomicrographs. A–F, holotype, female (ICHUM 5988); G, paratype, male (ICHUM 5989). A, head, neck, and segments 1–11, dorsal view; B, neck and segments 1–6, dorsal view; C, neck and segments 1–6, ventral view; D, segments 5–10, ventral view; E, segments 7–10, dorsal view; F, segments 10 and 11, ventral view; G, segments 10 and 11, ventral view. Black arrows, white arrowheads, and black arrowheads indicate sensory spots, type-1 gland cell outlets, and type-2 gland cell outlets,

respectively. Numbers after abbreviations indicate corresponding segment number.

Abbreviations: ltas, lateral terminal accessory spine; lts, lateral terminal spine; lvs, lateroventral acicular spine; lvt, lateroventral tube; mds, middorsal acicular spine; pe, penile spine; slt, sublateral tube.

Fig. 11. *Echinoderes uozumii* sp. nov., male (B–D) and females (A, E–G), scanning electron micrographs. A, head, neck, and segments 1–11, ventral view; B, head, ventral view; C, mouth cone, ventral view; D, introvert, ventral view; E, neck and segments 1–4, dorsal view; F, neck and segments 1–4, laterodorsal view (left side); G, neck and segments 1–4, ventral view. Black arrows and arrowheads mark sensory spots and type-2 gland cell outlets, respectively. Numbers after abbreviations indicate corresponding sector/ring of head part or segment number of trunk part. Abbreviations: he, head; int, introvert; ios, inner oral style; lts, lateral terminal spine; lvt, lateroventral tube; mc, mouth cone; mds, middorsal acicular spine; mvp, midventral placid; ne, neck; oos, outer oral style; psp, primary spinoscalid; sec, sector; sp, spinoscalid; tr, trunk; trp, trichoscalid plate; trs, trichoscalid.

Fig. 12. Polar diagram of mouth cone, introvert, and placids in *Echinoderes uozumii* sp. nov.

Grey shaded area shows mouth cone and bold bent bars symbolize placids. The Table lists the

scolid arrangement by sector.

Fig. 13. *Echinoderes uozumii* sp. nov., male (J) and females (A–I), scanning electron micrographs. A, segments 3–5, dorsal view; B, segments 35–, laterodorsal view (left side); C, segments 5–7, ventral view; D, segments 6–8, dorsal view; E, segments 6–8, laterodorsal view (left side); F, segments 7–9, lateroventral view (right side); G, segments 8–10, ventral view; H, segments 10 and 11, dorsal view; I, segment 11, ventral view; J, segment 11, ventral view. Black arrows point to sensory spots. Numbers after abbreviations indicate corresponding segment number. Abbreviations: ldt, laterodorsal tube; ltas, lateral terminal accessory spine; lts, lateral terminal spine; lvs, lateroventral acicular spine; lvt, lateroventral tube; mds, middorsal acicular spine; pe, penile spine; si, sieve plate; slt, sublateral tube.

Fig. 14. Map of locations of all records of the *E. multiporus* species group (circles) (Yamasaki *et al.* 2018b, 2019; this study) and the *E. bispinosus* species group (triangles) (Higgins, 1982; Sørensen, 2014; Sönmez *et al.*, 2016; Sørensen *et al.*, 2016; Cepeda *et al.*, 2019c; this study).

Table 1. Measurements for adult *Echinoderes gama* sp. nov. (in micrometers or as percentage).

Character	Total				Females				Males			
	N	Range	Mean	SD	N	Range	Mean	SD	N	Range	Mean	SD
TL	7	177–190	182.2	4.90	3	180–190	183.9	5.25	4	177–188	180.9	4.95
MSW-8	6	33–35	34.1	0.91	3	33–35	34.3	1.28	3	33–34	33.8	0.46
MSW-8/TL	6	18.3–19.2%	18.6%	0.37%	3	18.3–19.2%	18.7	0.50	3	18.3–18.8%	18.6	0.28
SW-10	6	29–32	30.3	1.61	3	29–32	31.2	1.75	3	29–31	29.4	1.01
SW-10/TL	6	15.8–17.6%	16.5%	0.65%	3	16.2–17.6%	16.9	0.69	3	15.8–16.3%	16.1	0.30
S1	6	21–24	22.1	0.99	3	21–23	21.9	0.96	3	21–24	22.4	1.17
S2	6	19–23	20.3	1.39	3	19–21	19.8	1.14	3	19–23	20.8	1.67
S3	6	17–18	17.4	0.57	3	17–18	17.4	0.71	3	17–18	17.3	0.53
S4	6	17–19	17.5	0.90	3	17–19	17.6	1.22	3	17–18	17.4	0.71
S5	6	16–19	17.5	1.39	3	16–19	17.6	1.85	3	16–19	17.4	1.16
S6	6	17–20	18.4	1.15	3	18–20	18.7	1.07	3	17–19	18.2	1.41
S7	6	18–21	19.3	1.12	3	19–20	19.6	0.27	3	18–21	19.0	1.67
S8	6	20–24	21.7	1.38	3	21–22	22.0	0.61	3	20–24	21.4	2.02
S9	6	22–25	23.4	0.90	3	23–24	23.6	0.61	3	22–25	23.2	1.22
S10	6	28–31	29.8	1.31	3	28–31	29.6	1.97	3	30–31	30.1	0.46
S11	6	17–20	18.8	1.12	3	19–20	19.3	0.96	3	17–19	18.2	1.17
MD4 (ac)	7	18–21	19.5	1.21	3	18–20	19.4	1.22	4	18–21	19.6	1.38
MD5 (ac)	7	28–34	31.3	2.15	3	28–34	31.2	2.79	4	29–33	31.4	2.01
MD6 (ac)	7	34–43	38.3	3.03	3	34–40	37.0	3.04	4	36–43	39.2	3.08

MD7 (ac)	7	35–45	42.6	3.96	3	35–45	41.9	5.62	4	39–45	43.2	3.06
MD8 (ac)	6	49–62	56.8	4.39	3	49–57	53.0	5.57	4	55–62	58.7	2.74
LV5 (tu)	7	9–15	11.8	1.81	3	9–15	11.5	2.99	4	12–13	12.0	0.65
LV7 (ac)	7	13–17	14.6	1.34	3	14–16	15.0	0.94	4	13–17	14.3	1.67
LV8 (ac)	7	14–18	15.8	1.18	3	15–18	16.1	1.32	4	14–17	15.6	1.22
SL8 (tu)	7	12–13	12.7	0.64	3	12–13	12.3	0.40	4	12–13	13.0	0.65
LV9 (ac)	7	17–19	18.3	0.70	3	18–19	18.5	0.80	4	17–19	18.2	0.69
LD10 (tu)	7	7–18	12.5	4.45	3	7–8	7.9	0.46	4	15–18	16.0	1.40
LTS	7	113–125	120.6	3.69	3	113–120	117.7	3.72	4	120–125	122.7	1.89
LTAS	3	30–32	30.6	1.22	3	30–32	30.6	1.22	n.a.	n.a.	n.a.	n.a.
LTS/TL	7	62.8–70.6%	66.2%	2.91%	3	62.8–66.2%	64.0	1.92	4	65.4–70.6%	67.9%	2.45%
LATS/TL	3	16.3–16.8%	16.6%	0.28%	3	16.3–16.8%	16.6	0.28	n.a.	n.a.	n.a.	n.a.

(ac), acicular spine; LD, laterodorsal tube; LTAS, lateral terminal accessory spine; LTS, lateral terminal spine; LV, lateroventral spine/tube; MD, middorsal spine; MSW, maximum sternal width; S, segment length; SL, sublateral tube; SW, standard width; TL, trunk length; (tu), tube.

Table 2. Summary of locations of cuticular structures and appendages in *Echinoderes gama* sp. nov.

Position segment	MD	PD	SD	LD	ML	SL	LA	LV	VL	VM
1	gco1		ss	ss				gco1		
2	gco1, ss		gco2		ss			gco2		gco1, ss
3	gco1		ss							gco1
4	ac	gco1								gco1
5	ac	gco1	ss					tu		gco1
6	ac	gco1, ss			ss					gco1, ss
7	ac	gco1, ss			ss			ac		gco1
8	ac	gco1, ss				tu		ac		gco1
9		gco1, ss		ss		si		ac	ss	gco1
10	gco1, gco1		ss	tu					ss	gco1
11	gco1, gco1		ss				pe×3 (m), ltas (f)	lts		

ac, acicular spine; (f), female condition of sexually dimorphic character; gco1/2, type-1/2 gland cell outlet; LA, lateral accessory; LD, laterodorsal; ltas, lateral terminal accessory spine; lts, lateral terminal spine; LV, lateroventral; (m), male condition of sexually dimorphic character; MD, middorsal; ML, midlateral; pe, penile spine; PD, paradorsal; SD, subdorsal; si, sieve plate; SL, sublateral; ss, sensory spot; tu, tube; VL, ventrolateral; VM, ventromedial.

Table 3. Measurements for adult *Echinoderes kajiharai* sp. nov. (in micrometers or as percentage).

Character	N	Range	Mean	SD
TL	5	284–305	291.4	9.75
MSW-8	5	48–50	48.5	1.15
MSW-8/TL	5	16–17%	16.7%	0.41%
SW-10	5	41–42	41.3	0.56
SW-10/TL	5	14–15%	14.2%	0.42%
S1	5	28–33	30.7	2.00
S2	5	24–27	25.7	1.37
S3	5	20–25	23.1	1.83
S4	5	25–27	25.8	1.00
S5	5	25–27	25.5	1.09
S6	5	27–29	28.2	0.95
S7	5	27–34	29.4	2.59
S8	5	29–35	32.3	2.41
S9	5	33–36	34.6	1.28
S10	5	32–39	35.5	2.87
S11	5	29–34	31.1	1.71
MD4 (ac)	5	31–36	34.6	1.93
MD6 (ac)	5	37–45	39.9	3.54
MD8 (ac)	5	74–78	76.9	1.70
LV2 (tu)	5	15–20	18.2	2.09
LV5 (tu)	5	13–19	17.2	2.61
LV6 (ac)	5	16–24	19.9	2.76
LV7 (ac)	5	19–27	23.2	3.65
LV8 (ac)	5	25–36	30.7	4.40
LA9 (ac)	5	37–45	41.3	3.68
ML10 (tu)	5	16–26	22.6	4.13
LTS	5	167–191	183.6	10.12
LTS/TL	5	59–67%	63.1%	3.79%

(ac), acicular spine; LA, lateral accessory spine; LTS, lateral terminal spine; LV, lateroventral spine/tube; MD, middorsal spine; ML, midlateral tube; MSW, maximum sternal width; S, segment length; SW, standard width; TL, trunk length; (tu), tube.

Table 4. Summary of locations of cuticular structures and appendages in *Echinoderes kajiharai* sp. nov.

Position segment	MD	PD	SD	LD	ML	SL	LA	LV	VL	VM
1	gco1		ss		ss		gco1			
2	gco1, ss			gco2	ss			tu		gco1, ss
3	gco1		ss							gco1
4	ac	ss	gco1							gco1
5			gco1	gco2	ss			tu		gco1
6	ac	ss	gco1		ss			ac		gco1, ss
7			gco1					ac		gco1, ss
8	ac		gco1, ss, gco2	ss				ac		gco1
9		ss	gco1, gco2	ss		si	ac		Ss	gco1
10	gco1, gco1		ss		tu				Ss	gco1
11			ss				pe×2 (m), ltas (f)	lts		

ac, acicular spine; (f), female condition of sexually dimorphic character; gco1/2, type-1/2 gland cell outlet; LA, lateral accessory; LD, laterodorsal; ltas, lateral terminal accessory spine; lts, lateral terminal spine; LV, lateroventral; (m), male condition of sexually dimorphic character; MD, middorsal; ML, midlateral; pe, penile spine; PD, paradorsal; SD, subdorsal; si, sieve plate; SL, sublateral; ss, sensory spot; tu, tube; VL, ventrolateral; VM, ventromedial.

Table 5. Measurements for adult *Echinoderes uozumii* sp. nov. (in micrometers or as percentage).

Character	Total				Female				Male	
	N	Range	Mean	SD	N	Range	Mean	SD	N	
TL	5	202–229	217.6	9.88	4	202–229	217.6	11.41	1	218
MSW-8	5	42–44	43.1	1.18	4	42–44	42.7	1.03	1	44
MSW-8/TL	5	19–21%	19.8%	0.84%	4	19–21%	19.7%	0.89%	1	20%
SW-10	5	34–38	36.4	1.56	4	34–38	36.1	1.65	1	38
SW-10/TL	5	16–17%	16.7%	0.32%	4	16–17%	16.6%	0.18%	1	17%
S1	5	23–28	25.0	1.94	4	23–28	25.2	2.22	1	25
S2	5	23–25	24.0	1.11	4	23–25	24.3	0.96	1	23
S3	5	18–20	19.3	0.77	4	18–20	19.3	0.88	1	19
S4	5	18–20	18.5	0.96	4	18–20	18.4	1.09	1	19
S5	5	18–23	20.3	1.89	4	18–23	20.4	2.17	1	20
S6	5	19–23	21.0	1.25	4	19–23	21.2	1.38	1	20
S7	5	21–24	23.1	1.11	4	21–24	23.2	1.25	1	23
S8	5	24–27	25.5	1.18	4	24–27	25.7	1.22	1	25
S9	5	26–30	27.0	1.49	4	26–30	27.1	1.71	1	27
S10	5	32–37	34.0	1.59	4	33–37	34.4	1.53	1	32
S11	5	23–30	25.9	2.60	4	23–27	25.0	1.81	1	30
MD4 (ac)	4	30–32	30.6	1.00	3	30–32	30.6	1.22	1	31
MD6 (ac)	5	42–49	45.4	2.80	4	42–49	44.8	2.86	1	48
LV2 (tu)	5	12–13	12.8	0.51	4	12–13	12.8	0.58	1	13
LV5 (tu)	5	12–14	12.8	0.92	4	12–13	12.6	0.81	1	14

LV6 (ac)	5	15–18	16.9	1.21	4	15–18	17.0	1.33	1	16
LV7 (ac)	5	17–20	18.3	1.33	4	17–20	18.4	1.53	1	18
LV8 (ac)	5	18–21	19.4	1.37	4	18–20	18.9	0.95	1	21
SL8 (tu)	5	13–16	13.9	1.27	4	13–16	13.8	1.43	1	14
LV9 (ac)	5	20–22	21.0	1.07	4	20–22	20.7	0.95	1	22
LD10 (tu)	5	4–14	7.1	3.87	4	4–6	5.4	0.79	1	14
LTS	5	142–146	143.8	1.51	4	142–145	143.3	1.11	1	146
LTAS	4	26–29	27.7	1.16	4	26–29	27.7	1.16	n.a.	n.a.
LTS/TL	5	63–70%	66.2%	2.77%	4	63–70%	66.0%	3.15%	1	67%
LTAS/TL	4	12–13%	12.7%	0.49%	4	12–13%	12.7	0.49	n.a.	n.a.

(ac), acicular spine; LD, laterodorsal; LTAS, lateral terminal accessory spine; LTS, lateral terminal spine; LV, lateroventral spine/tube; MD, middorsal spine; MSW, maximum sternal width; S, segment length; SL, sublateral tube; SW, standard width; TL, trunk length; (tu), tube.

Table 6. Summary of locations of cuticular structures and appendages in *Echinoderes uozumii* sp. nov.

Position segment	MD	PD	SD	LD	ML	SL	LA	LV	VL	VM
1	gco1		ss	ss				gco1		ss
2	gco1, ss		gco2	ss, ss			gco2	tu		gco1, ss
3	gco1		ss		ss					gco1
4	ac	gco1								gco1
5	gco1		ss		ss			tu		gco1, ss
6	ac	gco1, ss			ss			ac		gco1, ss
7	gco1		ss		ss			ac		gco1, ss
8		gco1, ss				tu		ac		gco1
9		gco1, ss	ss		ss	si		ac	ss	gco1
10	gco1, gco1		ss	tu					ss	gco1
11	gco1, gco1	ss					pe x3 (m), ltas (f)	lts		

ac, acicular spine; (f), female condition of sexually dimorphic character; gco1/2, type-1/2 gland cell outlet; LA, lateral accessory; LD, laterodorsal; ltas, lateral terminal accessory spine; lts, lateral terminal spine; LV, lateroventral; (m), male condition of sexually dimorphic character; MD, middorsal; ML, midlateral; pe, penile spine; PD, paradorsal; SD, subdorsal; si, sieve plate; SL, sublateral; ss, sensory spot; tu, tube; VL, ventrolateral; VM, ventromedial.

Fig. 1

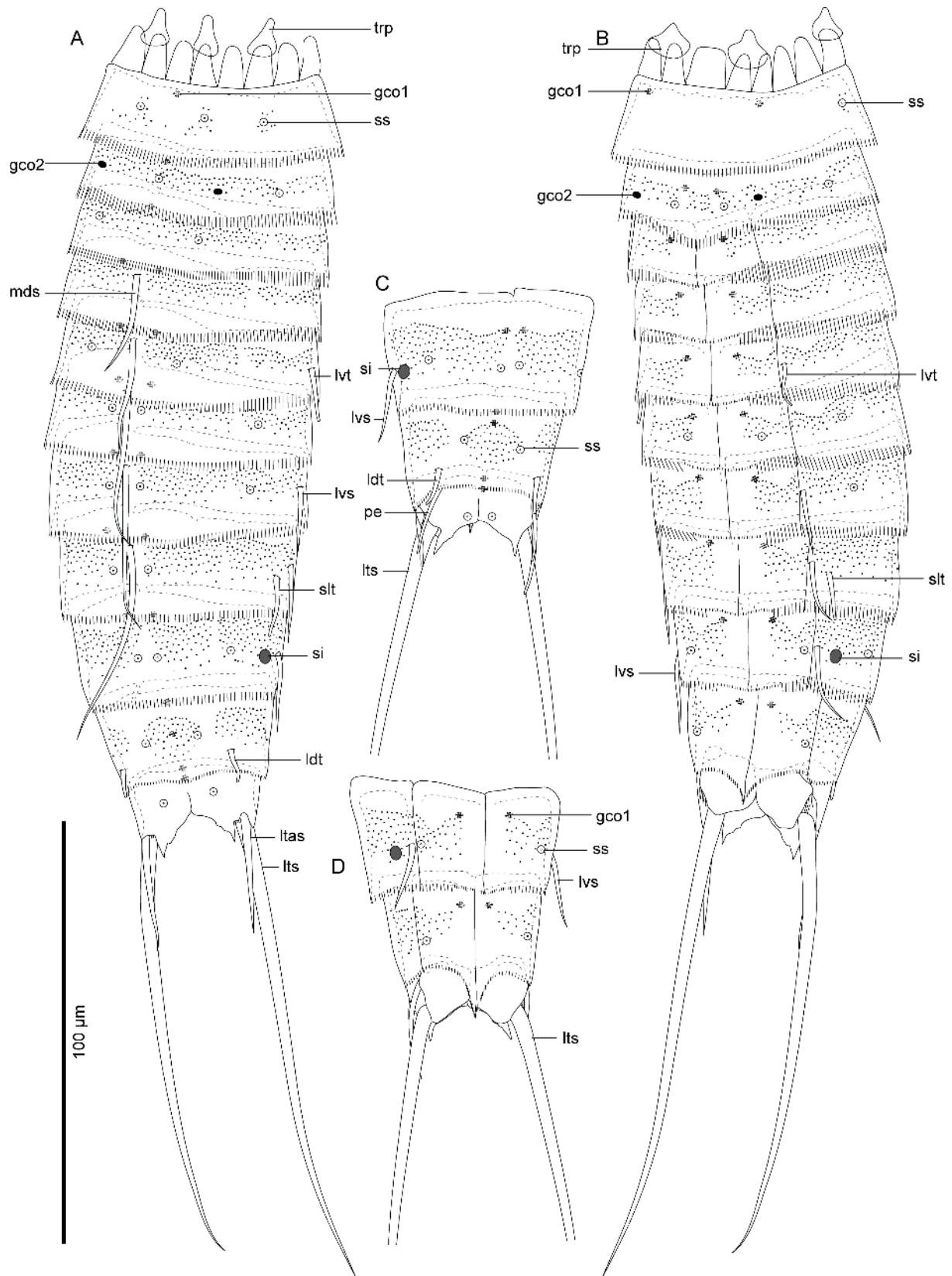


Fig. 2

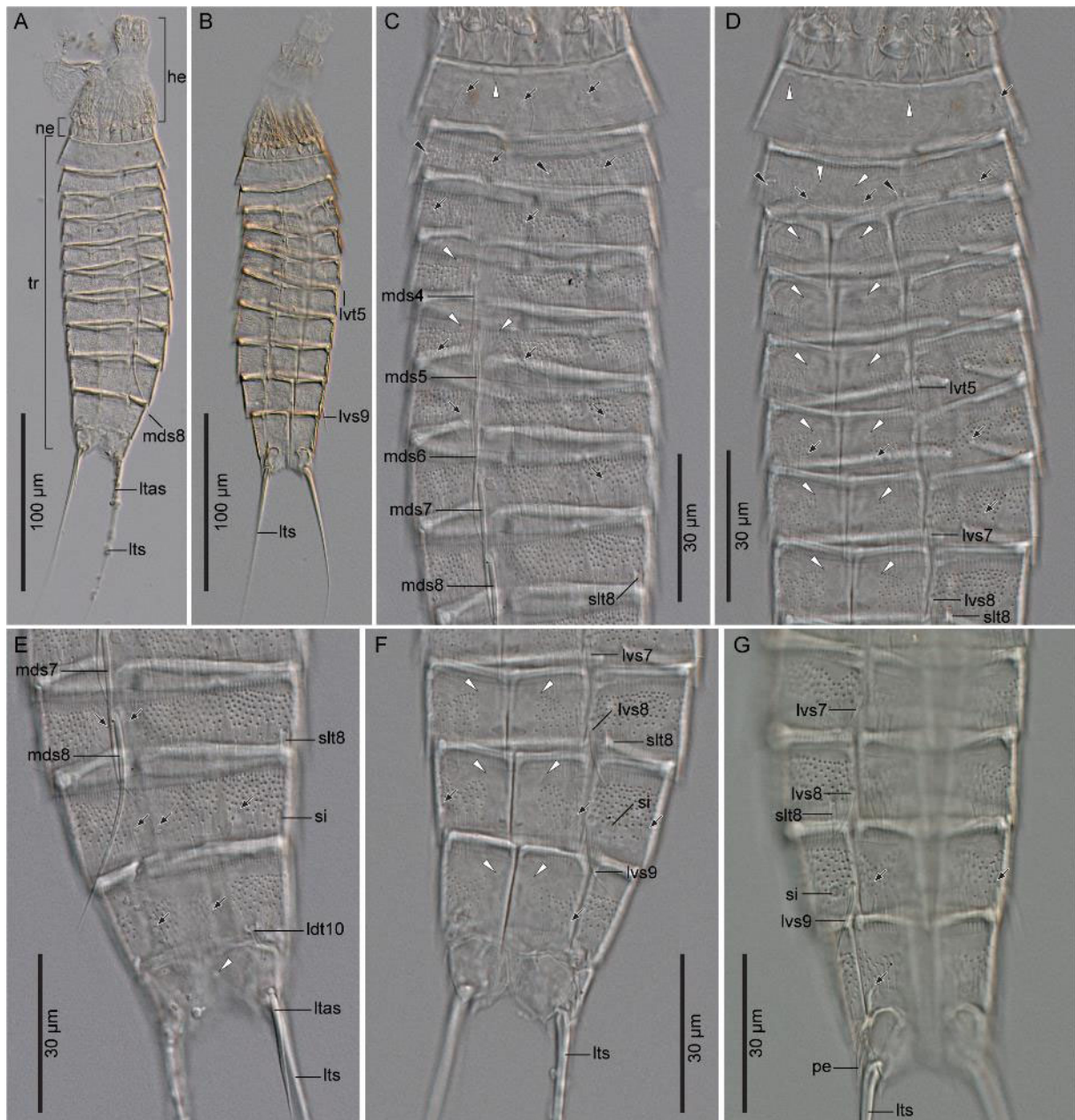


Fig.3

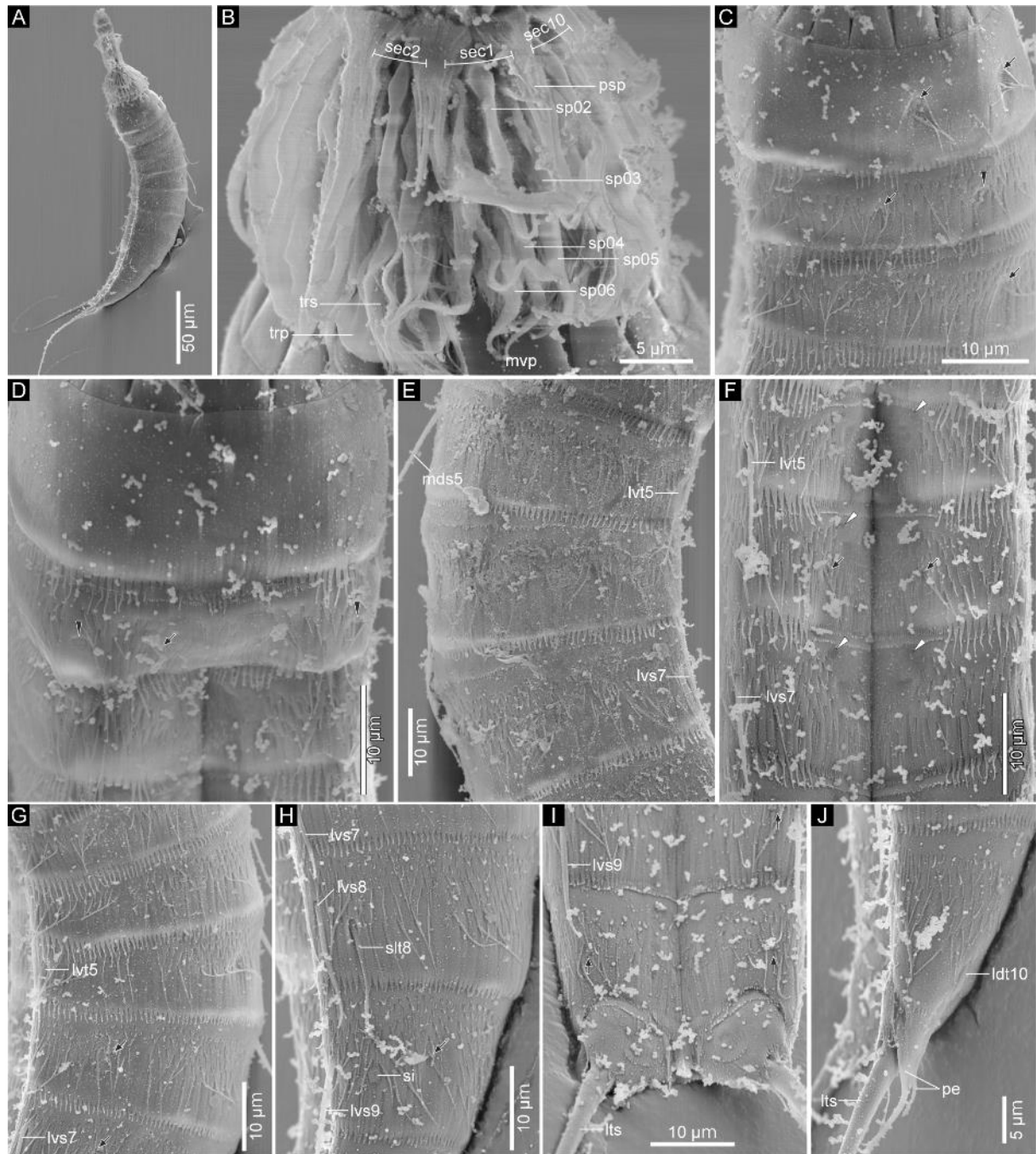
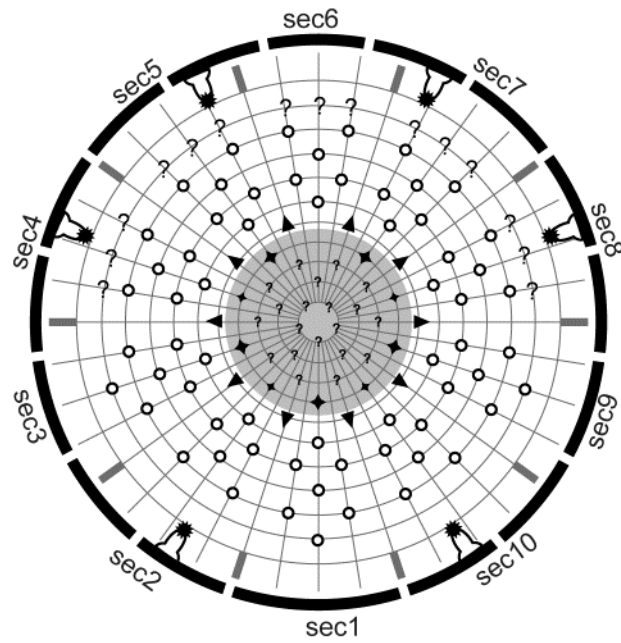


Fig.4



Scalid and style arrangement

Ring	Sector										Total
	1	2	3	4	5	6	7	8	9	10	
00 outer oral styles ◆	1	1	1	1	1	0	1	1	1	1	9
01 primary spinoscalids ▼	1	1	1	1	1	1	1	1	1	1	10
02 spinoscalids ○	1	1	1	1	1	1	1	1	1	1	10
03 spinoscalids ○	2	2	2	2	2	2	2	2	2	2	20
04 spinoscalids ○	1	1	1	1	1	1	1	1	1	1	10
05 spinoscalids ○	2	2	2	2	2	2	2	2	2	2	20
06 spinoscalids ○	1	0	1	?	?	?	?	?	1	0	>3
07 trichoscalids ★	0	1	0	1	1	0	1	1	0	1	6

Fig.5

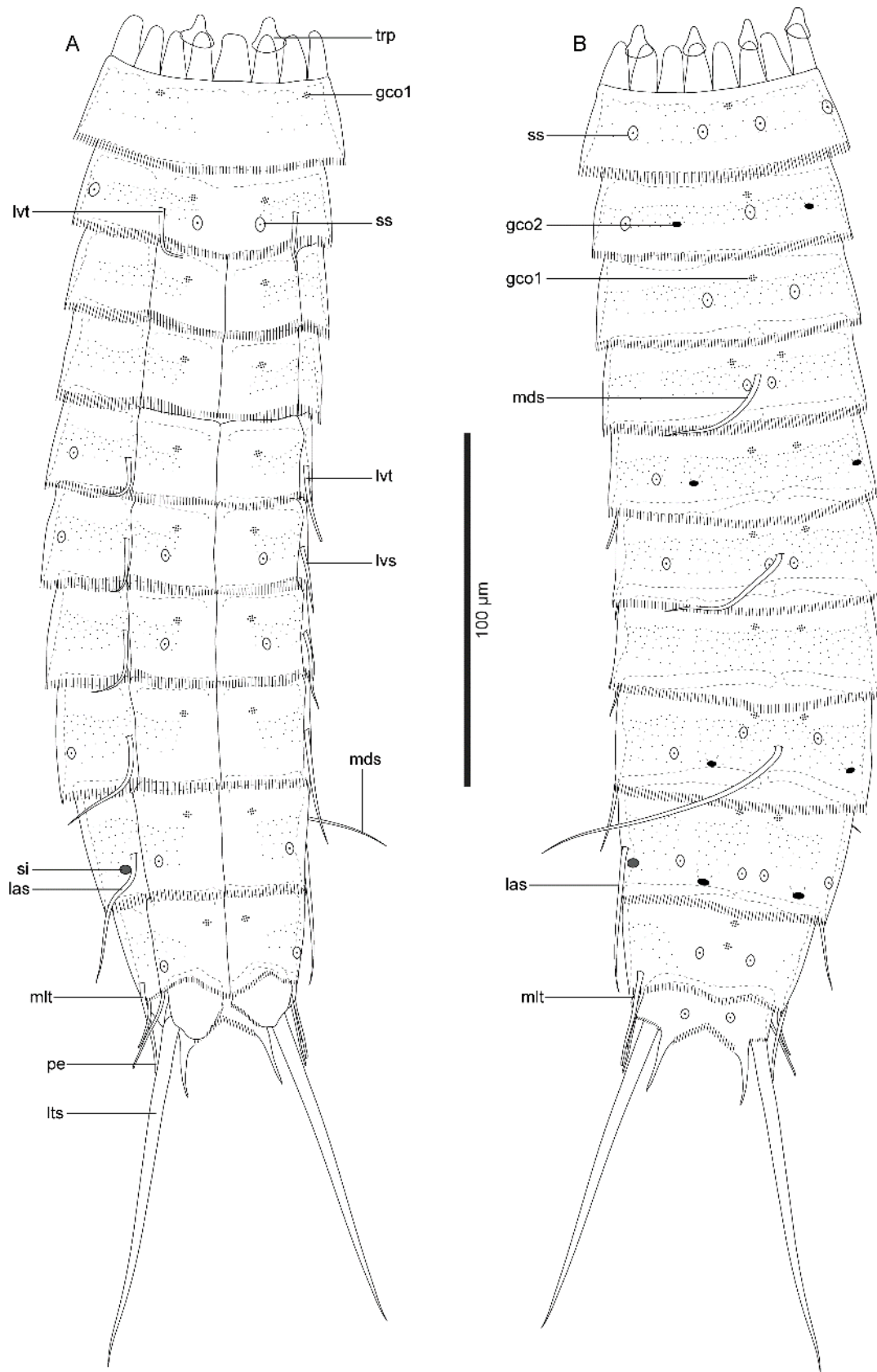


Fig.6

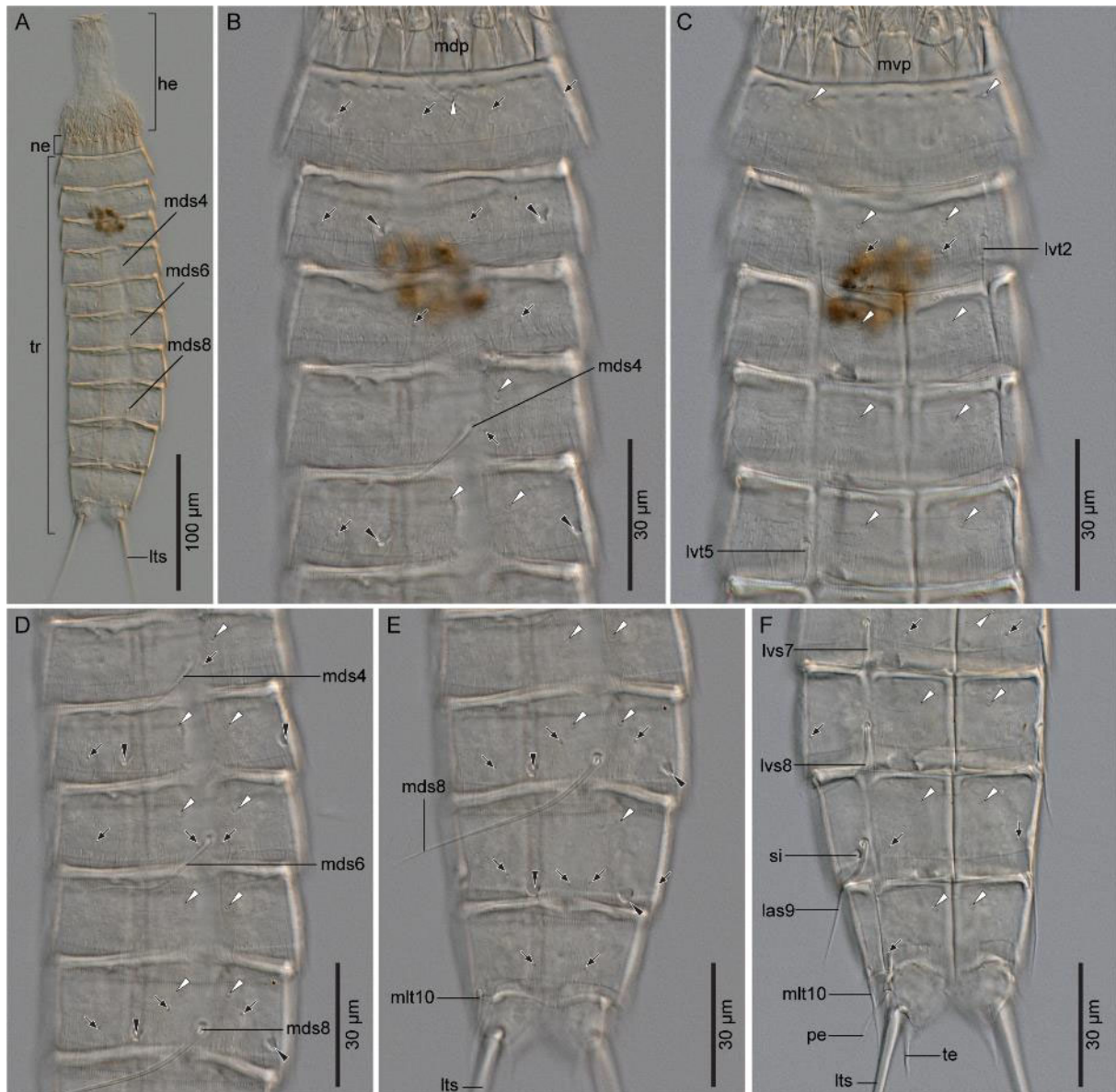


Fig.7

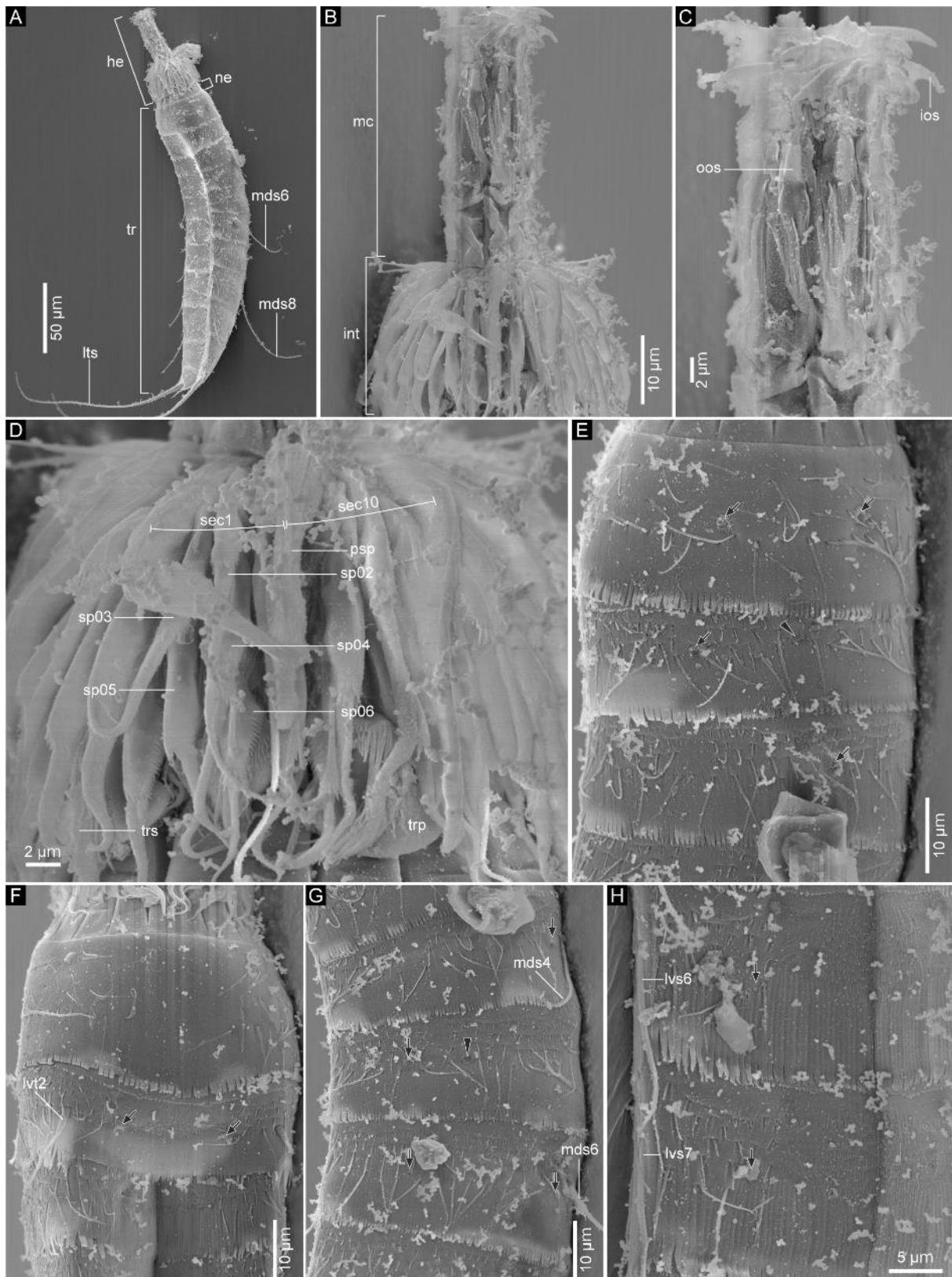


Fig.8

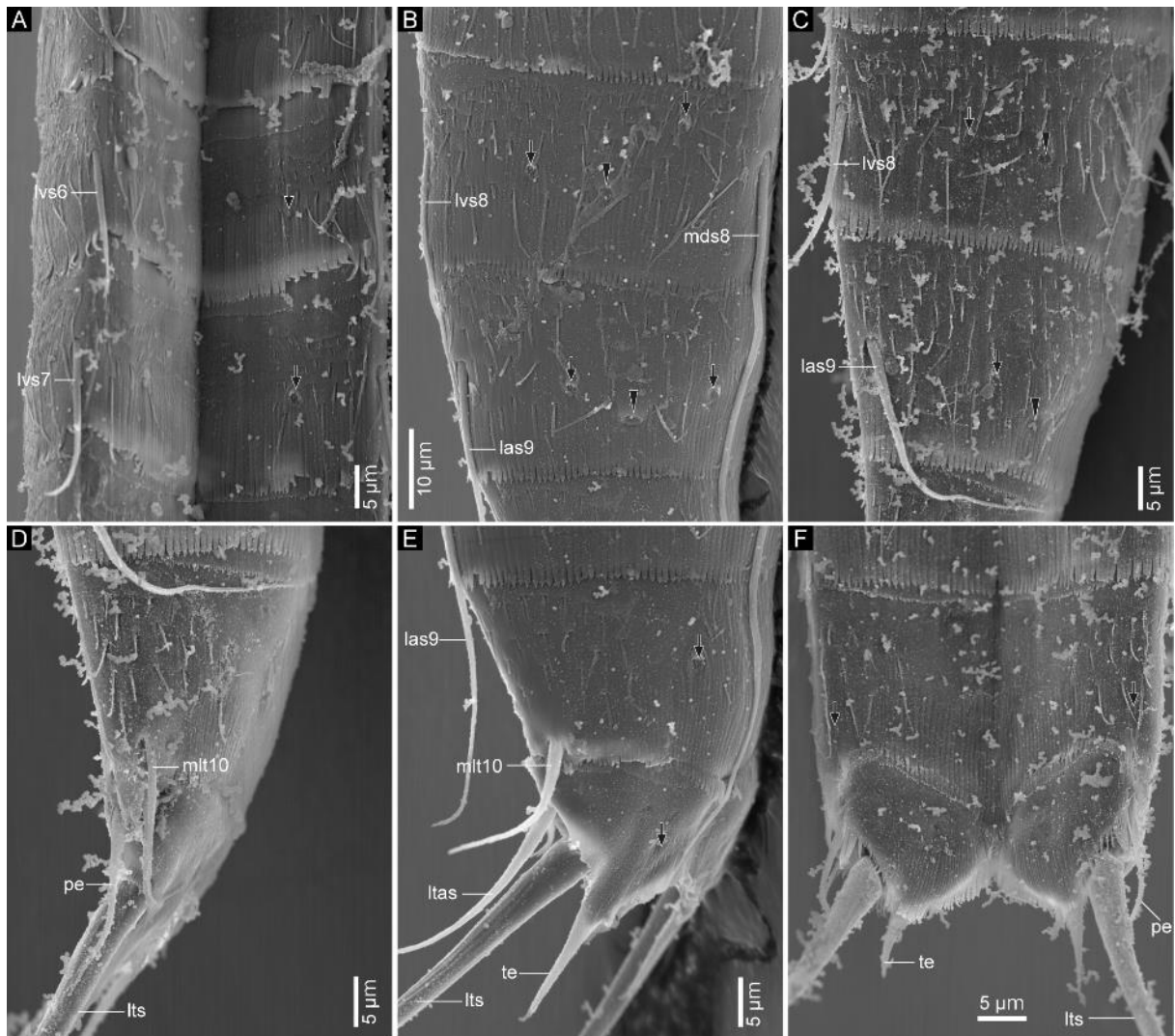


Fig.9

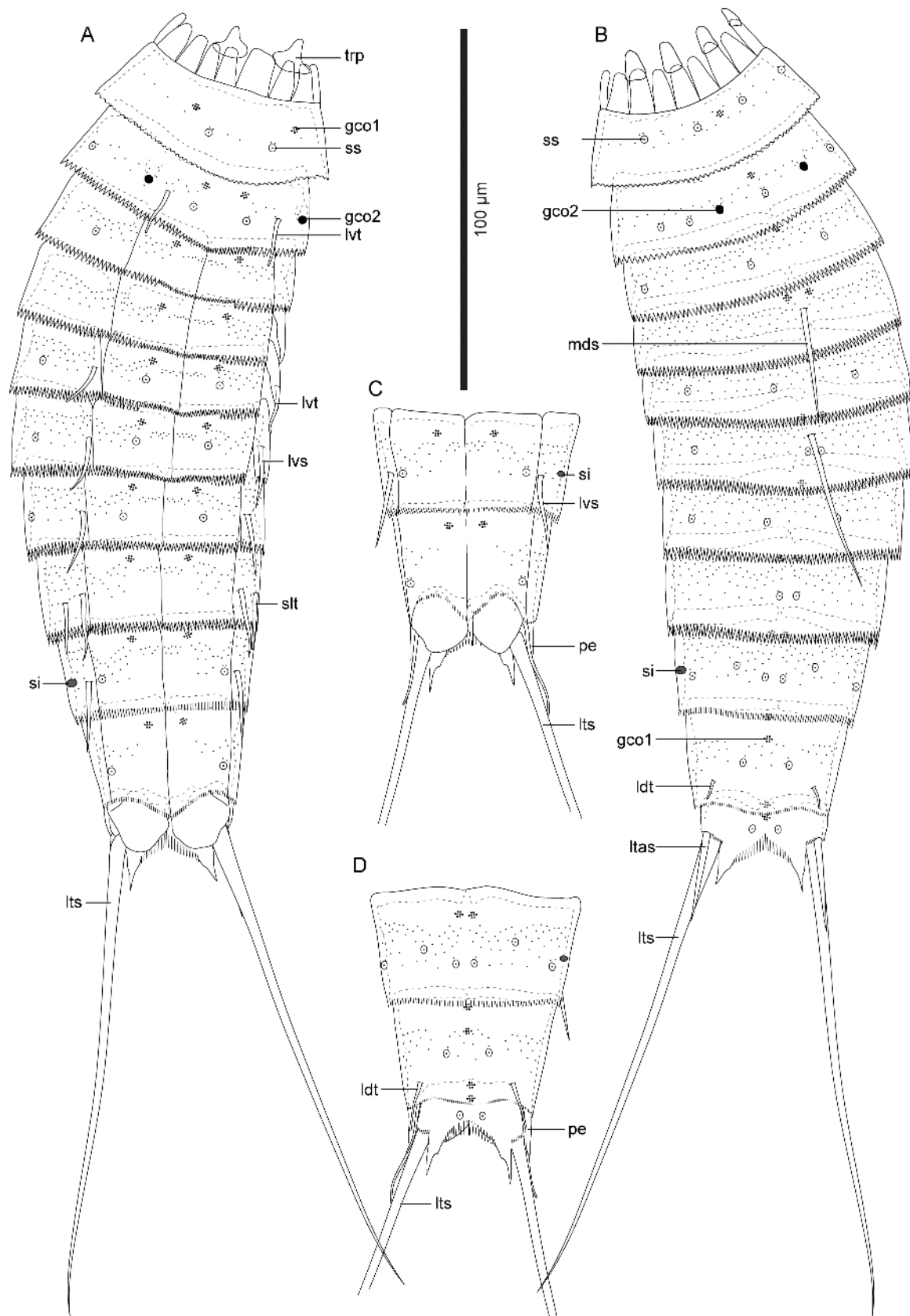


Fig.10



Fig.11

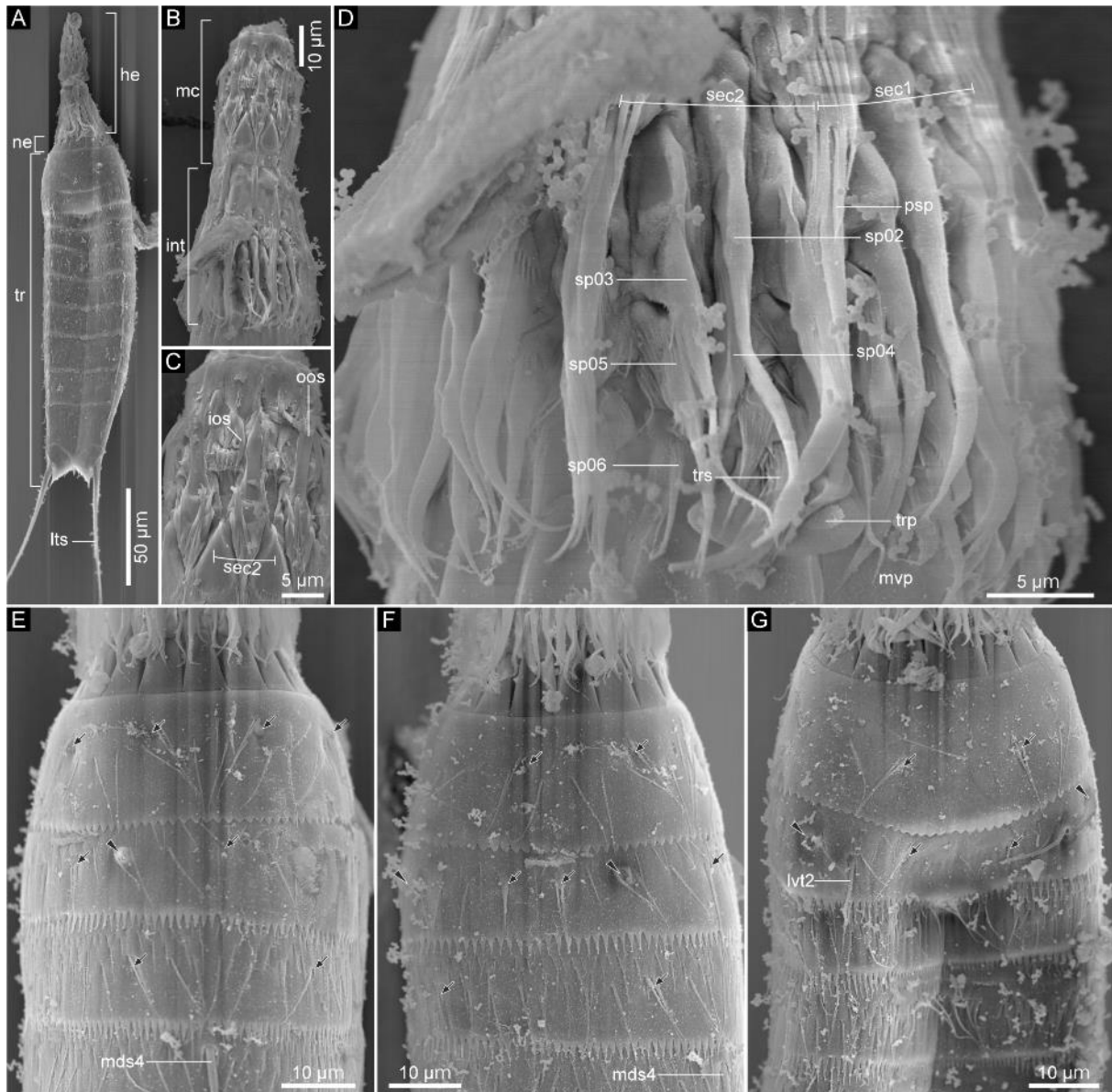
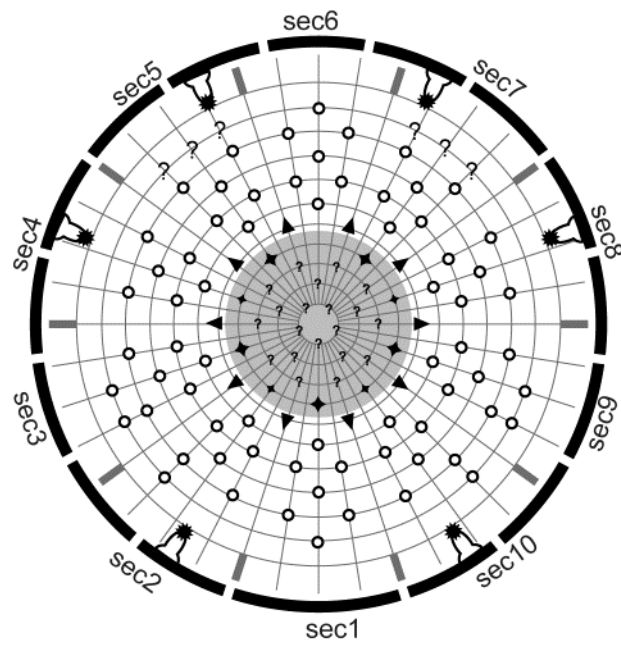


Fig.12



Scalid and style arrangement

Ring		Sector										Total
		1	2	3	4	5	6	7	8	9	10	
00 outer oral styles	◆	1	1	1	1	1	0	1	1	1	1	9
01 primary spinoscalids	▼	1	1	1	1	1	1	1	1	1	1	10
02 spinoscalids	○	1	1	1	1	1	1	1	1	1	1	10
03 spinoscalids	○	2	2	2	2	2	2	2	2	2	2	20
04 spinoscalids	○	1	1	1	1	1	1	1	1	1	1	10
05 spinoscalids	○	2	2	2	2	2	2	2	2	2	2	20
06 spinoscalids	○	1	1	2	0	?	1	?	0	2	1	>8
07 trichoscalids	✱	0	1	0	1	1	0	1	1	0	1	6

Fig.13

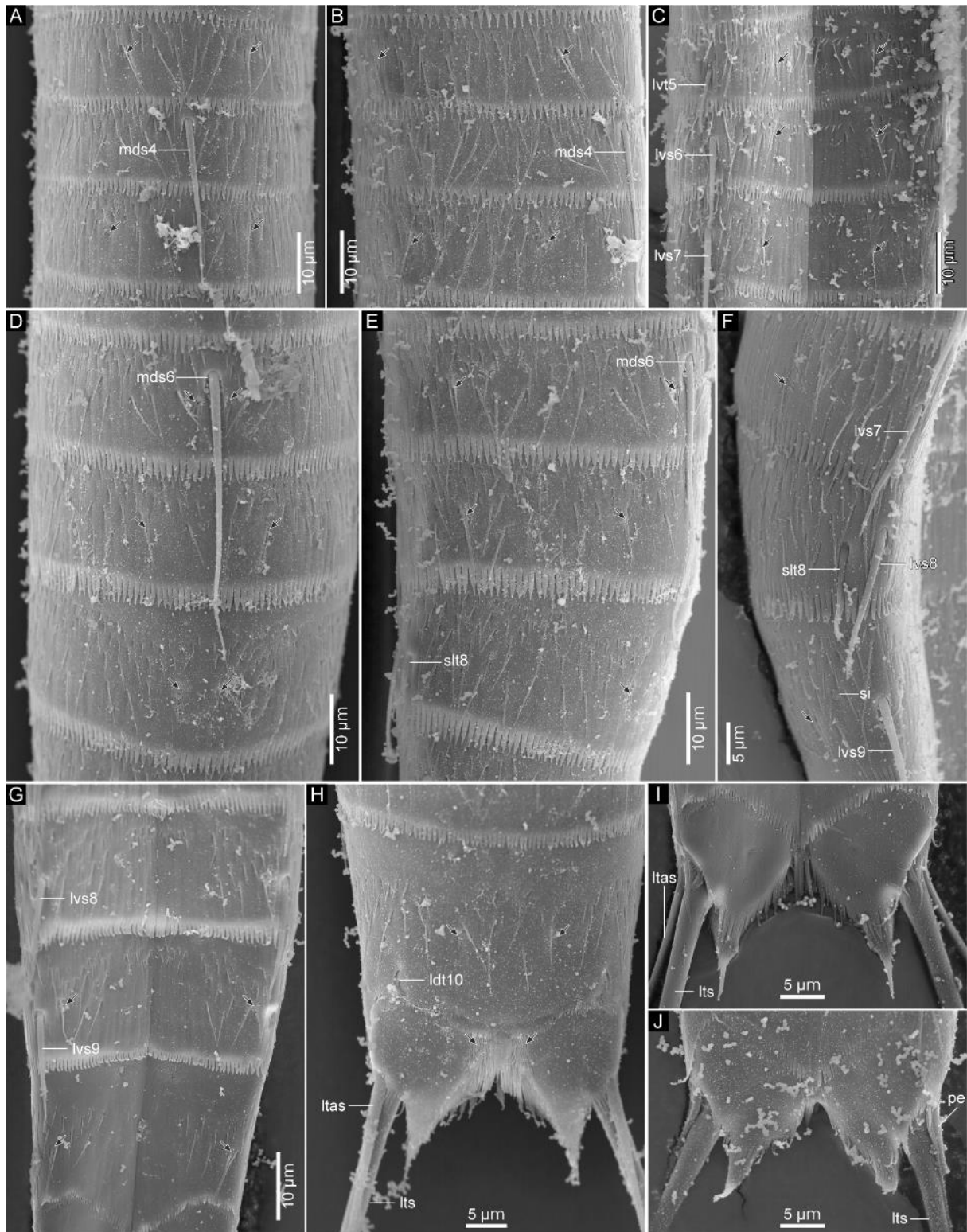


Fig.14

