

Innate cell-mediated cytotoxicity of CD8+ T cells against the protozoan parasite *Ichthyophthirius multifiliis* in the ginbuna crucian carp *Carassius auratus langsdorfii*

Sukeda, Masaki

Laboratory of Marine Biochemistry, Department of Bioscience and Biotechnology, Graduate School of Bioresource and Bioenvironmental Sciences, Kyushu University

Shiota, Koumei

Laboratory of Marine Biochemistry, Department of Bioscience and Biotechnology, Graduate School of Bioresource and Bioenvironmental Sciences, Kyushu University

Kondo, Masakazu

Department of Applied Aquabiology, National Fisheries University, Japan Fisheries Research and Education Agency

Nagasawa, Takahiro

Laboratory of Marine Biochemistry, Department of Bioscience and Biotechnology, Graduate School of Bioresource and Bioenvironmental Sciences, Kyushu University : Assistant Professor

他

<https://hdl.handle.net/2324/4113184>

出版情報 : *Developmental & Comparative Immunology*. 115 (103886), 2021-02. Elsevier
バージョン :
権利関係 :



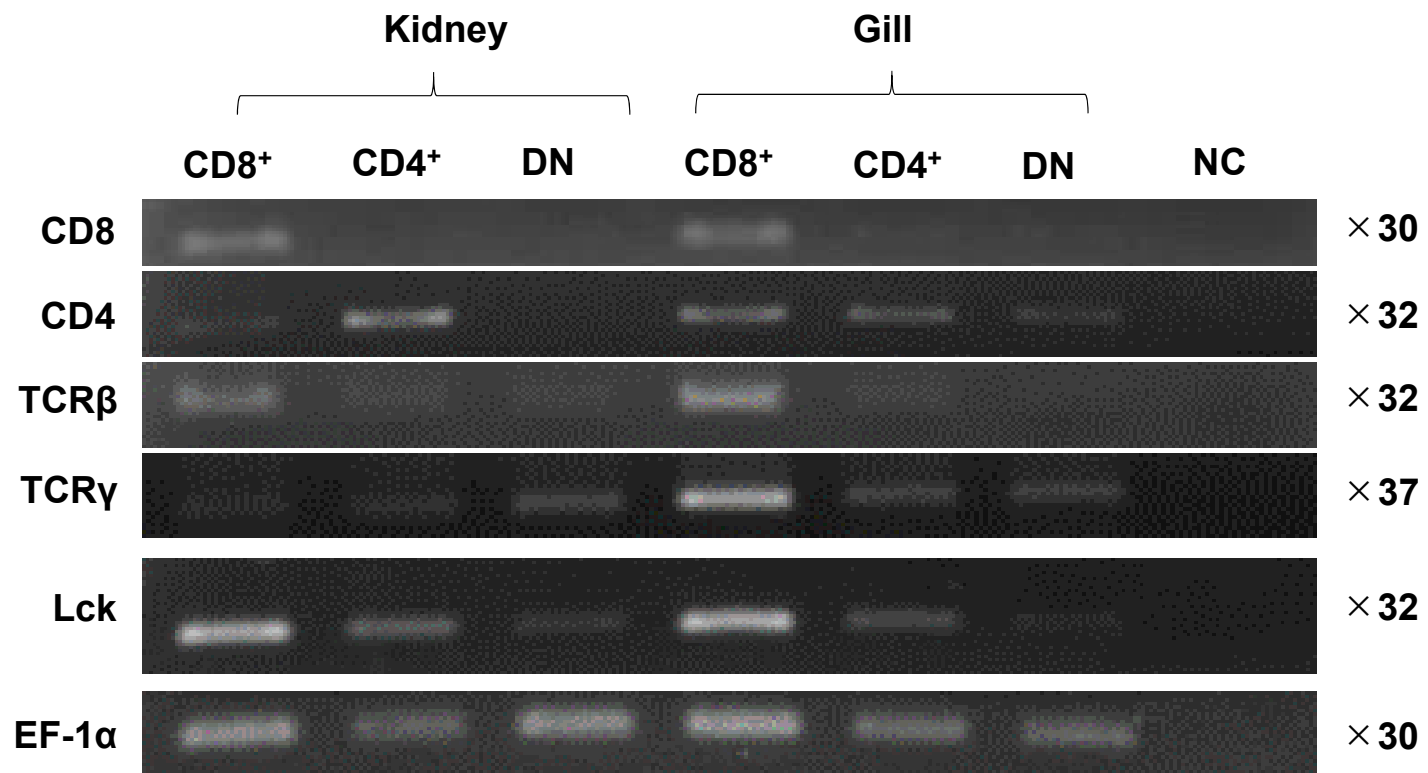


Fig.1

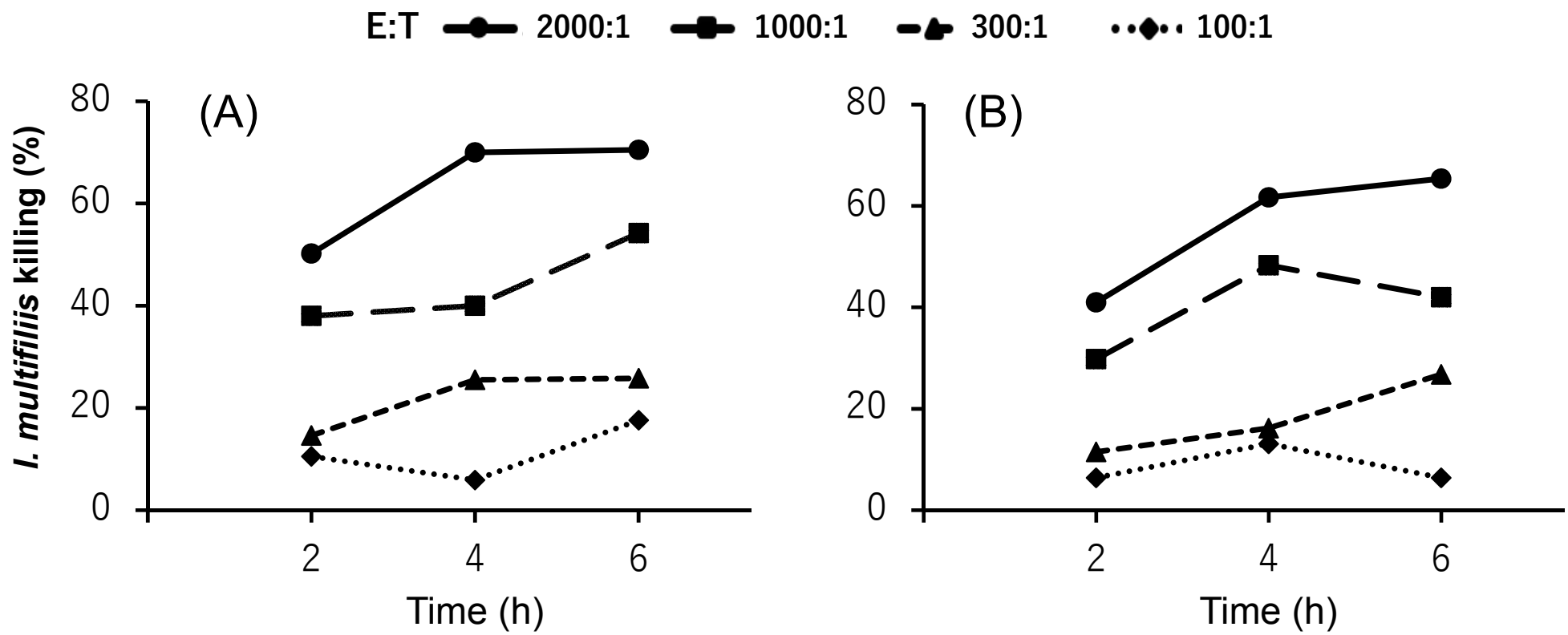


Fig. 2

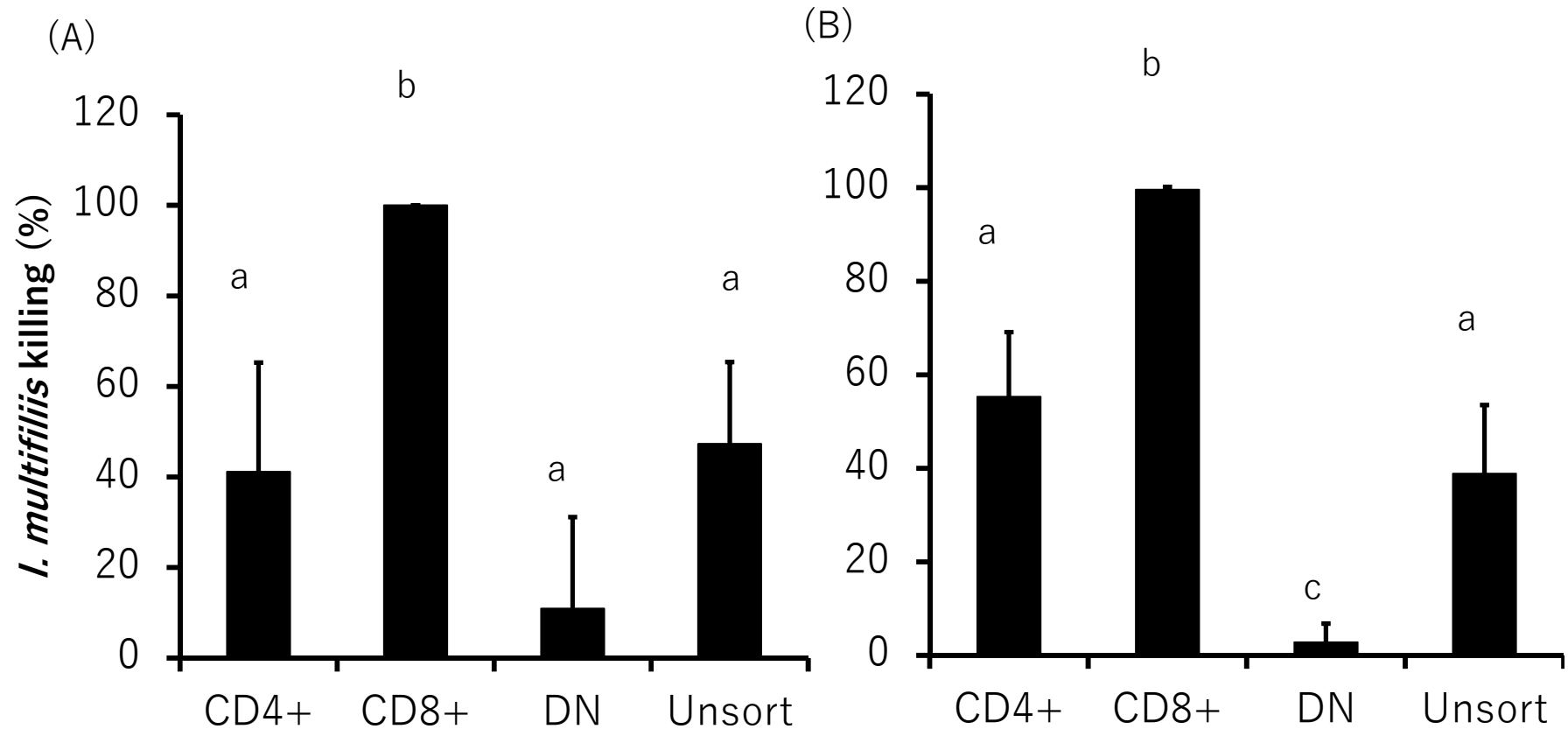


Fig. 3

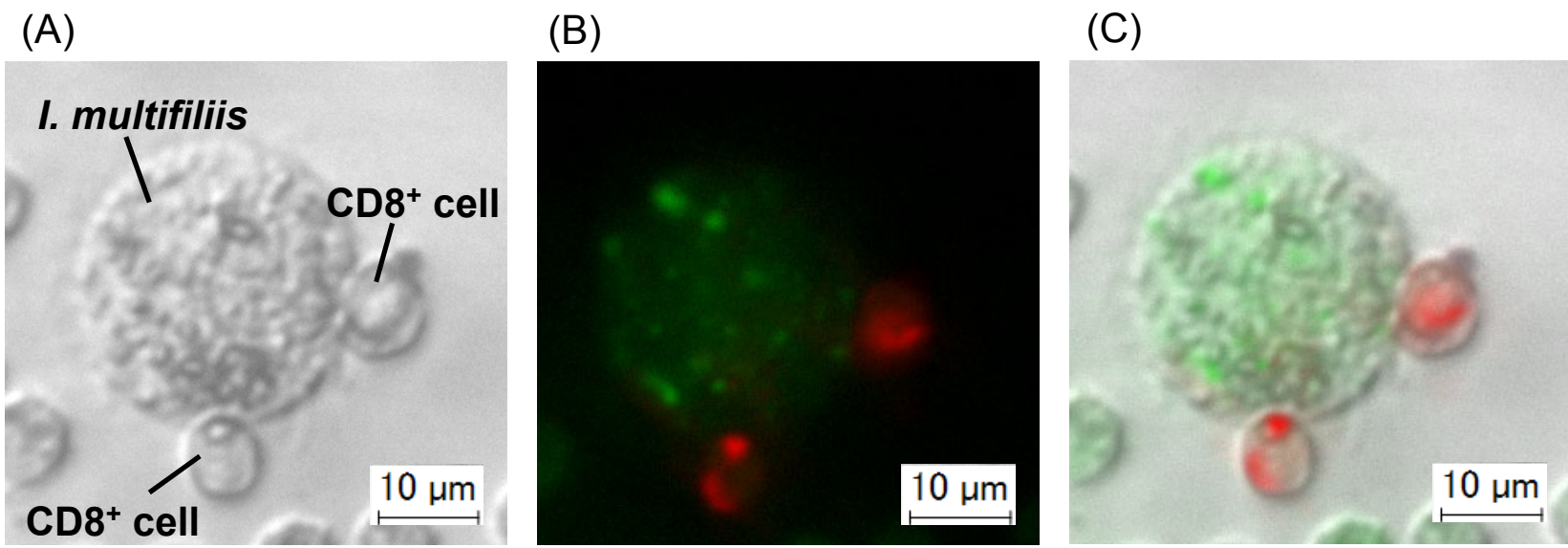


Fig. 4

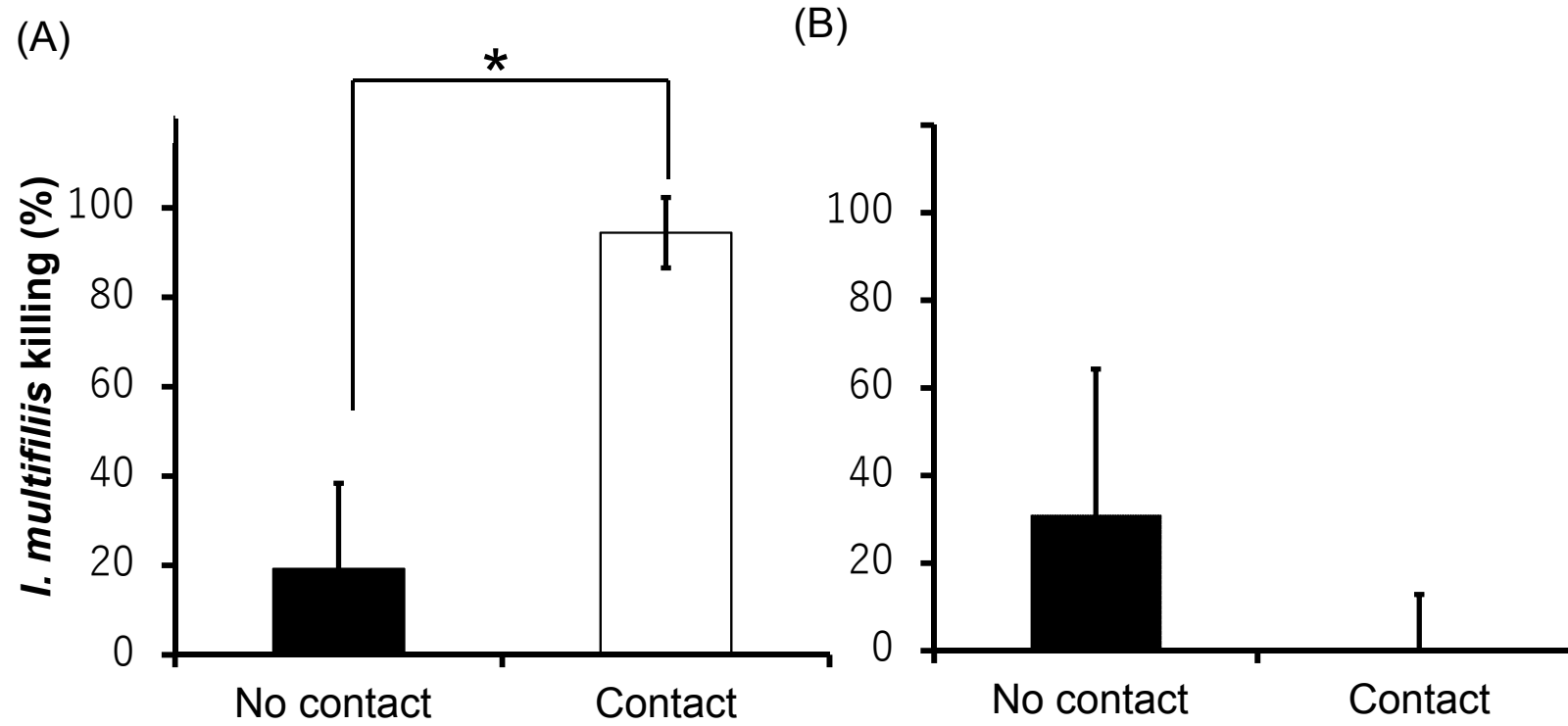


Fig. 5 A, B

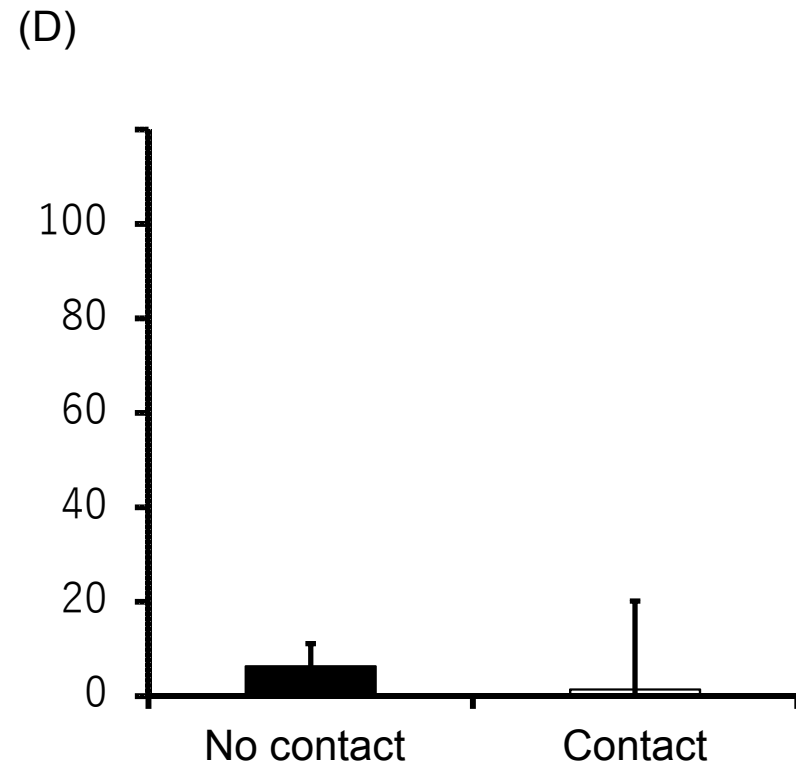
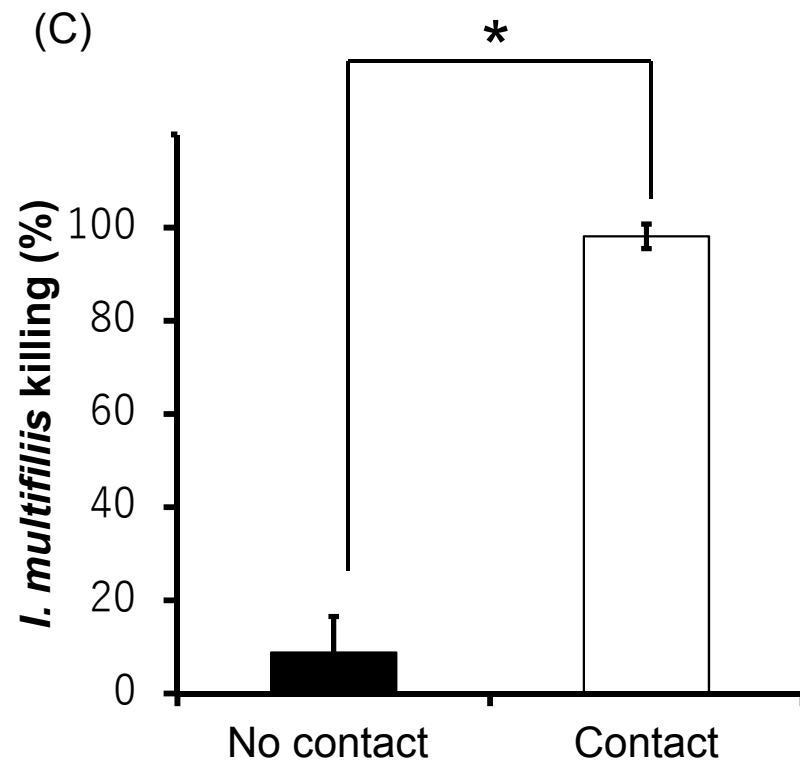


Fig.5 C,D

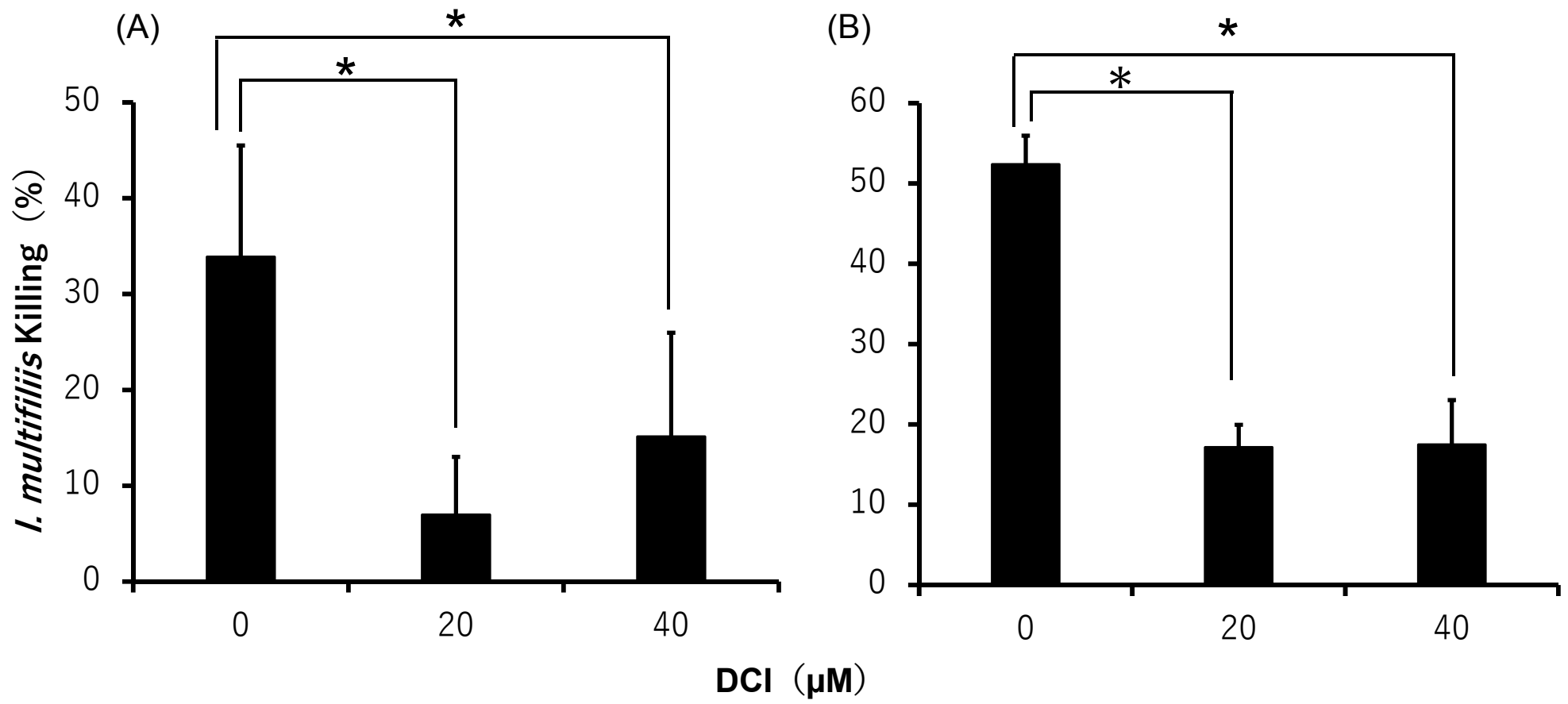


Fig.6

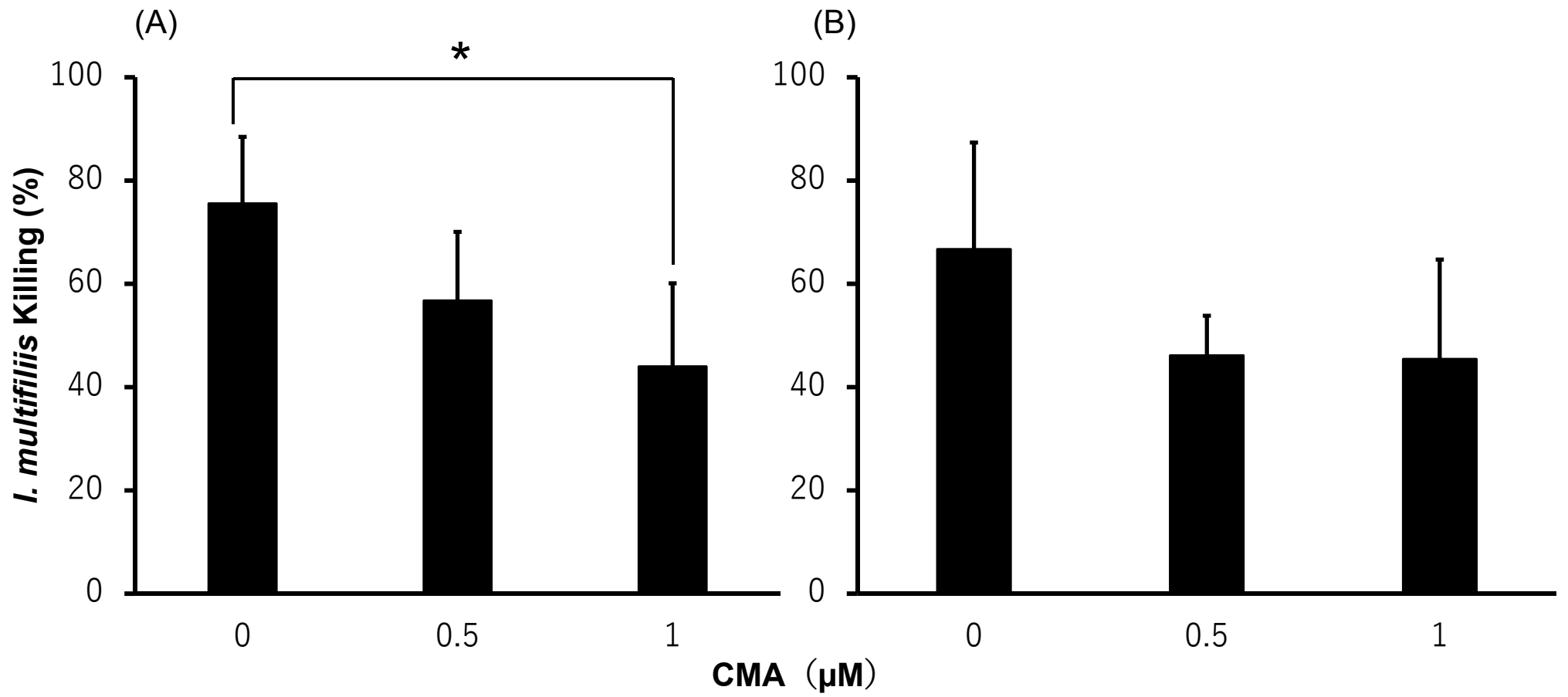


Fig.7