

ローマ大土地所有制研究

馬場, 典明
九州大学 : 名誉教授

<https://doi.org/10.15017/4103493>

出版情報 : 2020-11-30. Kyushu University
バージョン :
権利関係 :

図 1 アムフォラ〈型〉

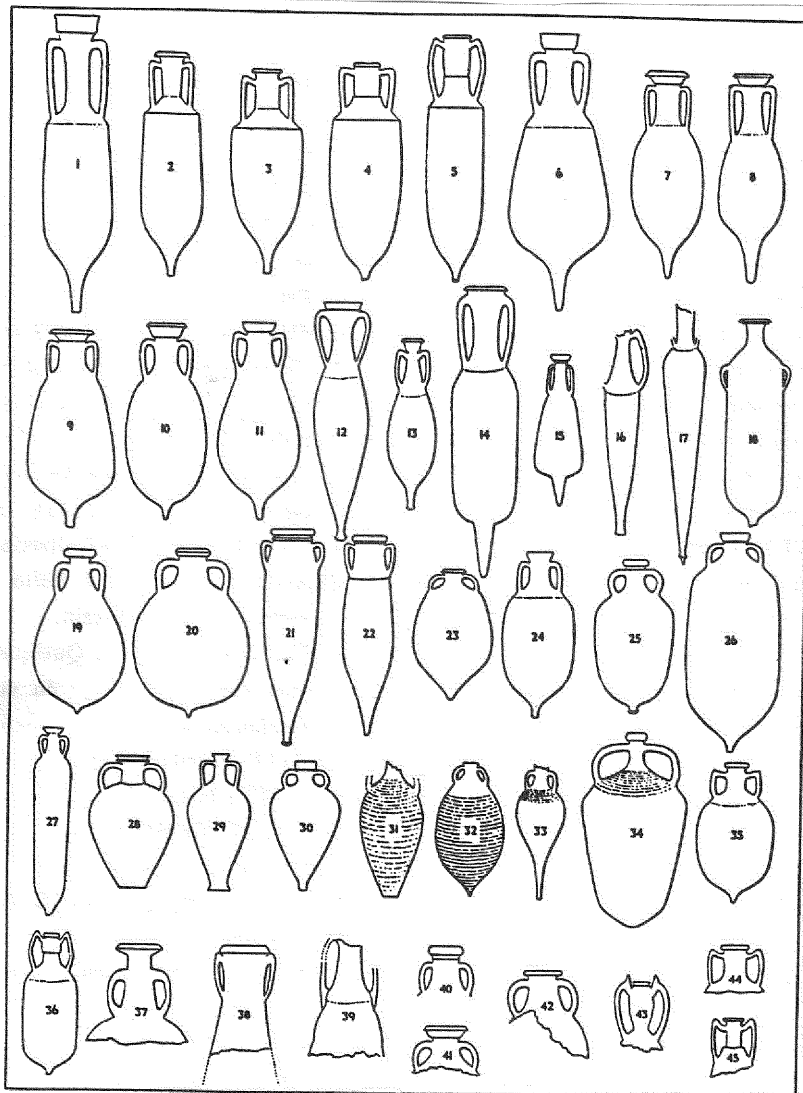
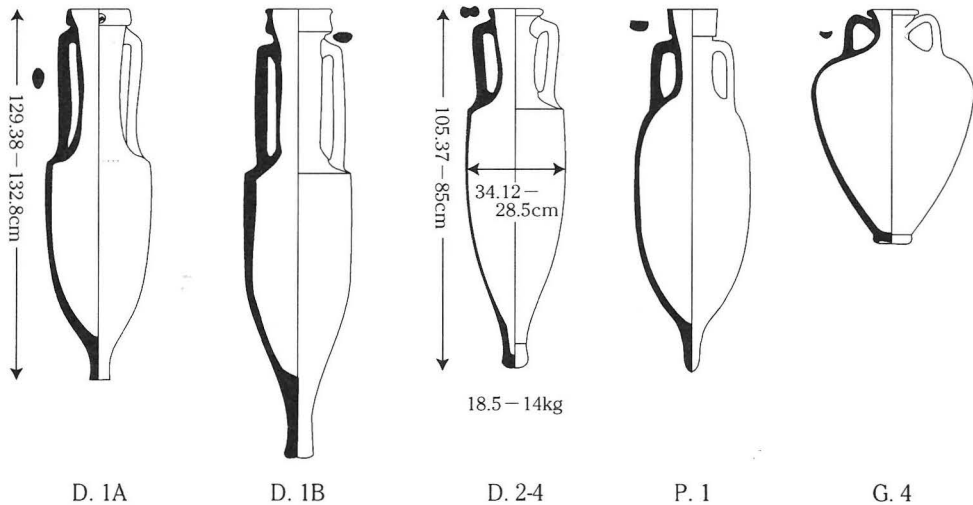


図 1A アムフォラ 5 形式 (但し計測数値は筆者記入)

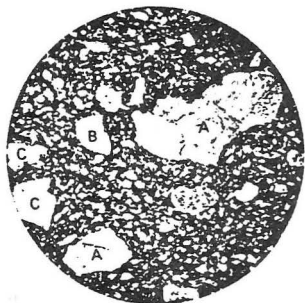


Peacock, D. P. S. and Williams, D. F., *Amphorae and the Roman Economy* (London 1986),
Class 3, 4, 6, 10, 27.

図 1B アムフォラ粘土組成

<P.1>

(A:花崗岩、B:石英、C:長石)



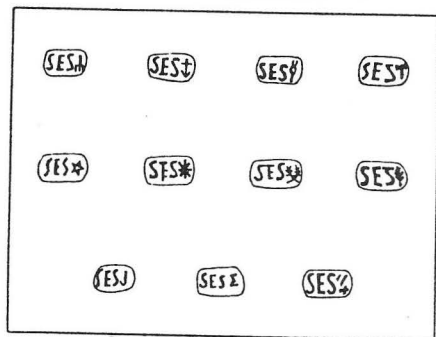
<D.1A>

(A:長石、B:火山岩)



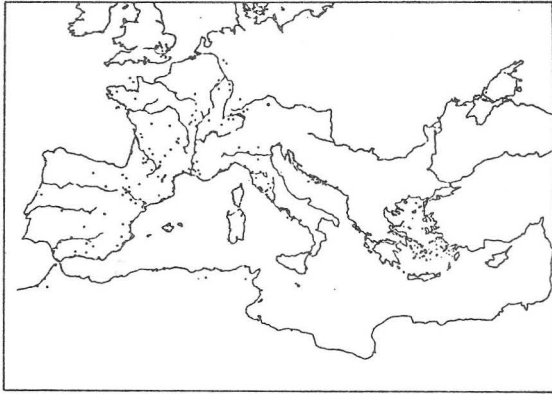
Peacock, D. P. S. and Williams, D. F., *op. cit.*, Fig. 31 (p. 94); Fig. 27 (p. 94).

図 2 《SEST》アムフォラ=スタンプ銘



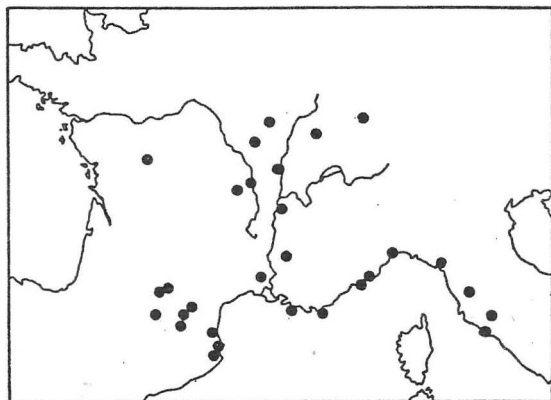
Manacorda, D., 'Produzione agricola, produzione ceramica e proprietari nell'ager Cosanus nel 1 A.C.', in: Giardina, A. e Schivone, A. (a cura di), *Società romana e produzione schiavistica II* (Roma/Bari 1981), p. 9 tav. 2.

図 3A <D.1>アムフォラ分布図



Panella, C., 'La distribuzione e i mercati', in: Giardina, A. e Schiavone, A. (a cura di), *op. cit.* pp. 56-7.

3B 《SEST》銘アムフォラ分布図

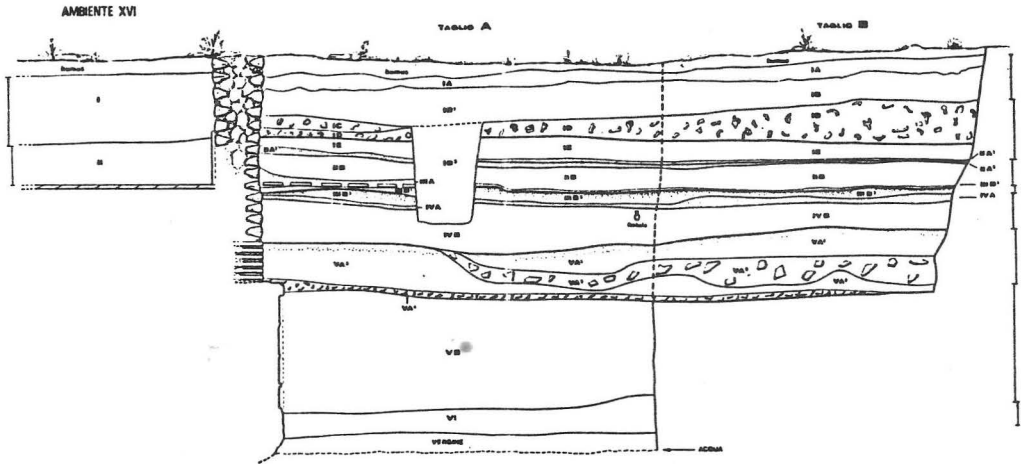


Manacorda, D., 'The Ager Cosanus and the Production of the Amphorae Sestius',
JRS. LXVIII (1978), p. 127, fig. 3

3C 《M・PORC》銘アムフォラ(P.1)分布図

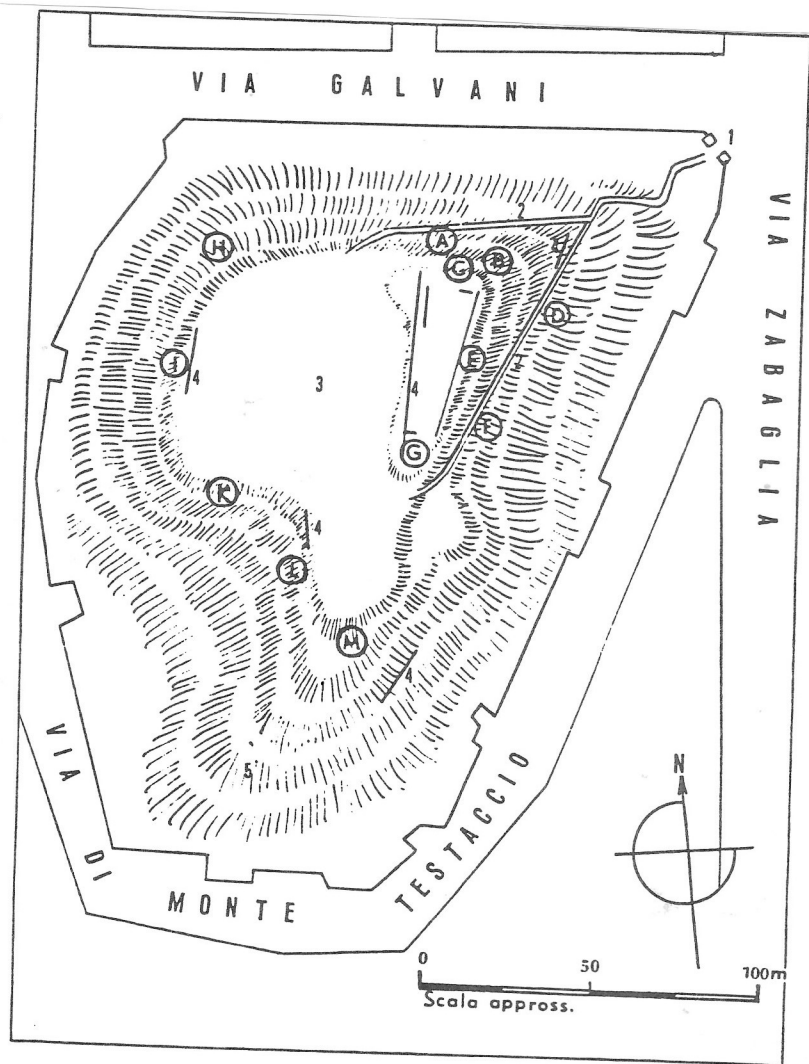


图 4 Terme del Nuotatore 陶片成層圖



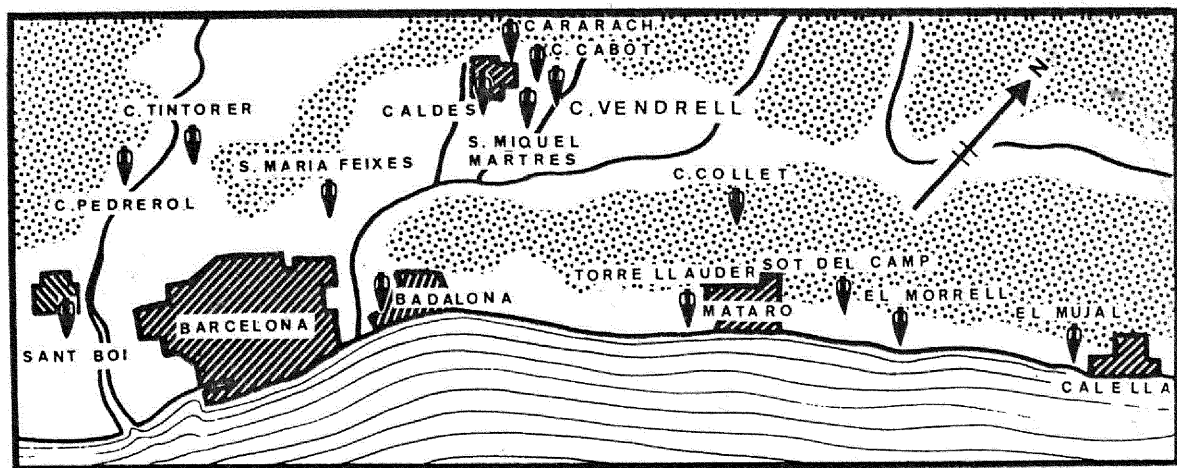
Panella, C., 'Annotazioni in margine alle stratigrafie delle Terme Ostiensi del Nuotatore', in: *Recherches sur les amphores romaines* (Actes du colloque de Rome, 1971). Collection de l'École Française de Rome X (Roma/Paris 1972), p. 71.

図 5 Monte Testaccio 調査デポジット図



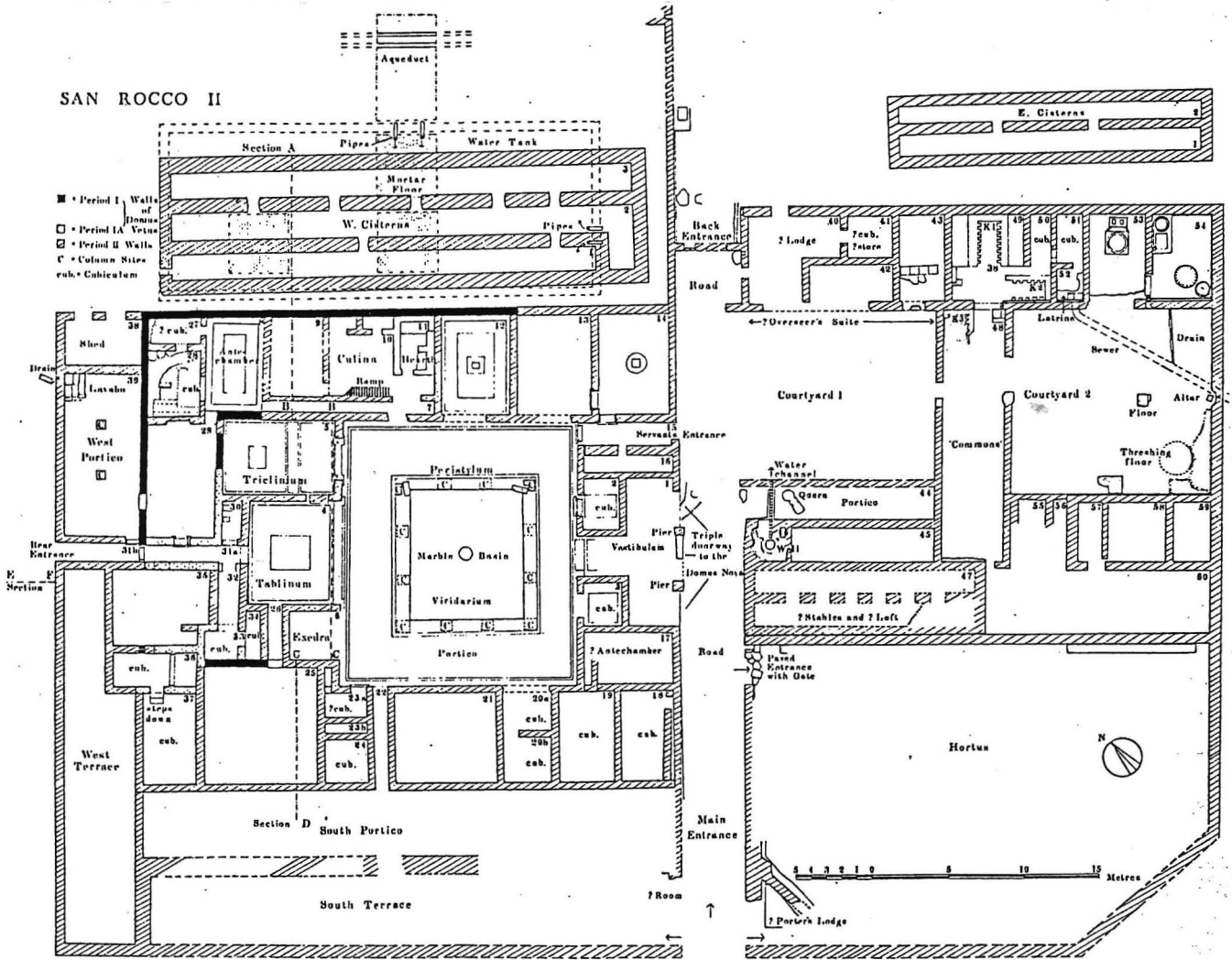
Rodriguez-Almeida, E., 'Novedades de epigrafia anforaria del Monte Testaccio', in: *Recherches sur les amphores* cit. fig. 2.

図 6 バルセロナ周辺<P.1>瓦窯遺構（アムフォラ印）分布地図

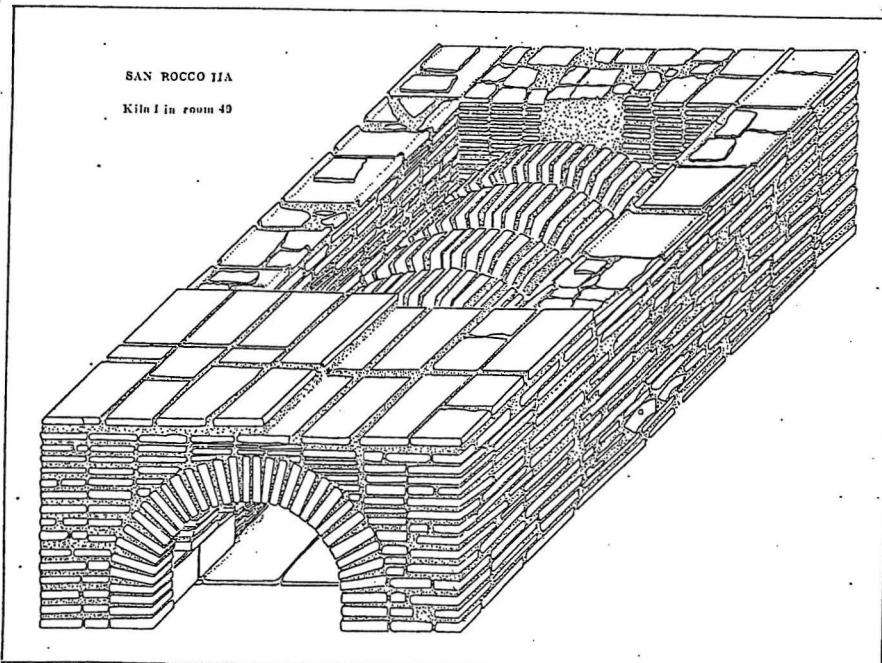


Pascual Guasch, R., 'Las ánforas de la Layetania', in: *Méthodes classiques et méthodes formelles dans l'étude des amphores* (Acts du colloque de Rome, 1974).
Collection de l'École Française de Rome XXXII (Roma/Paris 1977), fig.1.

图 7A San Rocco villa 遺構全圖



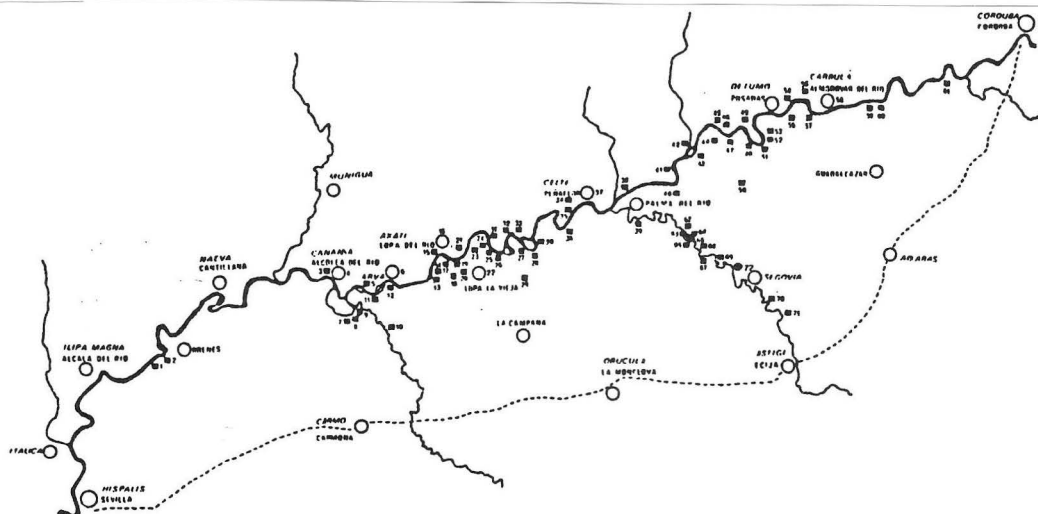
7B 瓦窯復原圖



K, 1, 2, 3 = 窯遺構

Cotton, M. A. and Métraux, G. P. R., *The San Rocco Villa at Francolise* (London 1985), fig. 7.

図 8A バエティス流域アムフォラ製造遺構（黒四角印）分布地図



Rodriguez, J.R., 'Cuestiones en torno a la epigrafía anfórica de la Bética', in: *Atti del colloquio di Siena 1986* (Roma 1989), fig.1.

8B バエティス流域ウイラ遺構地図

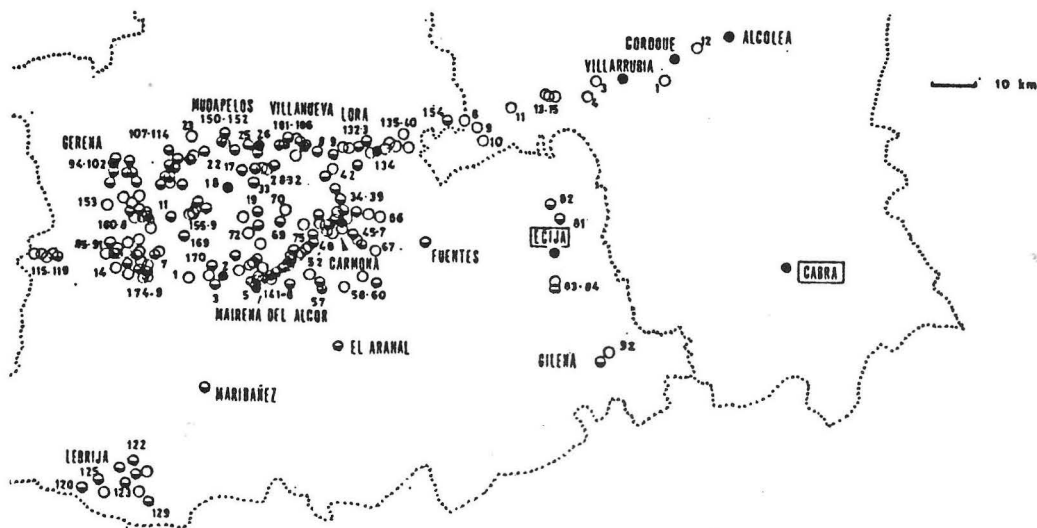
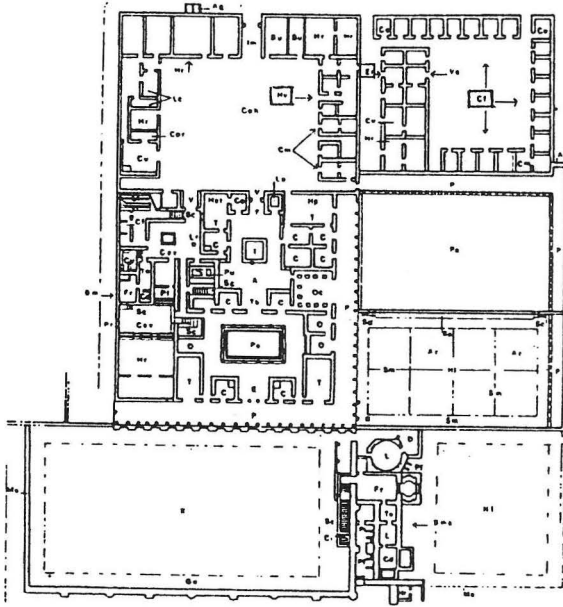


図 9 Settefinestre villa

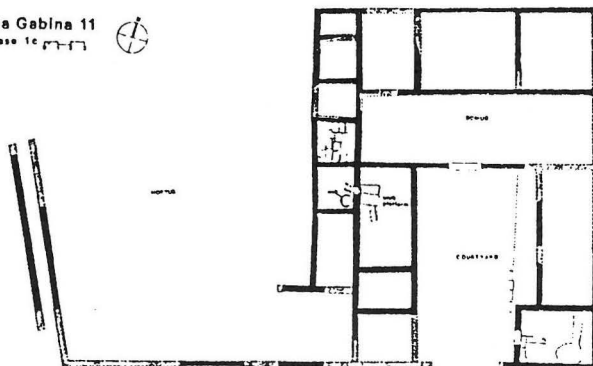


Cf. = 奴隷居住区
Hv. = ウィリクス居室
Er. = エルガストゥルム

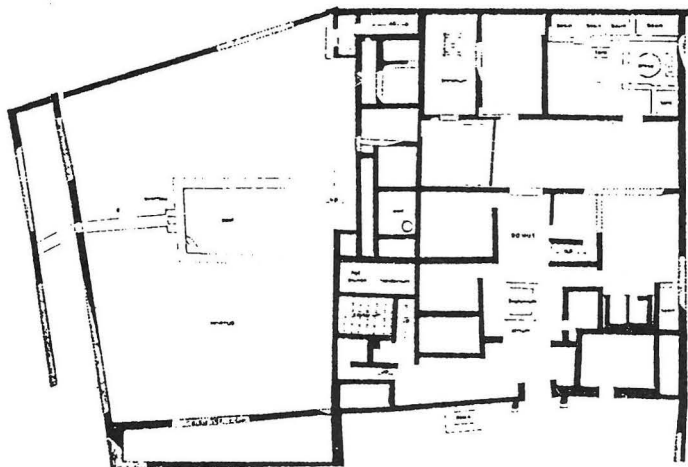
(Period II)

Carandini, A., 'La villa romana e piantagione schiavistica', in: Momigliano, A. e Schiavone, A. (progetto di), *Storia di Roma* IV (Torino 1989), fig. II-2.

Via Gabina 11
Phase 1c

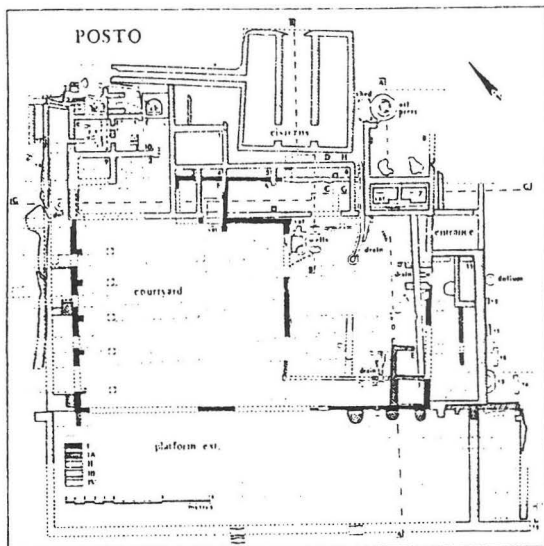


(Period I C)



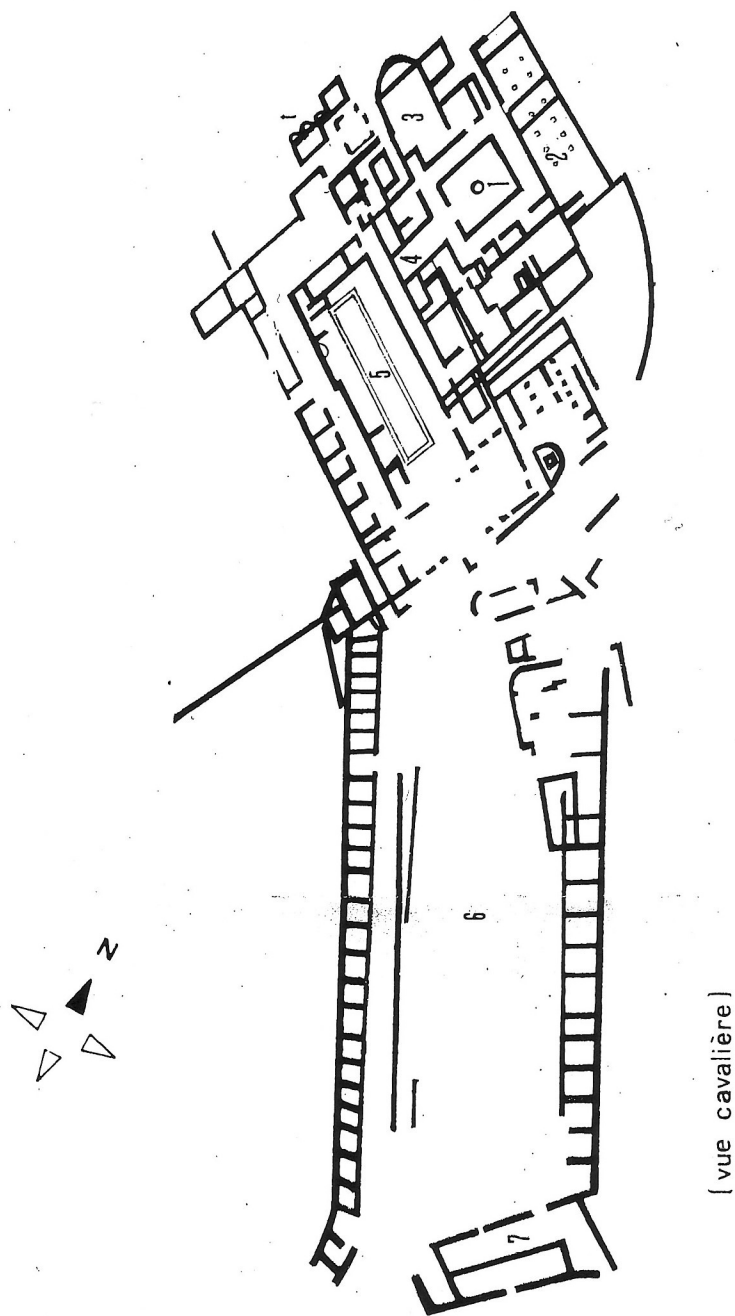
Via Gabina 11
Phase 2c

(Period II C)



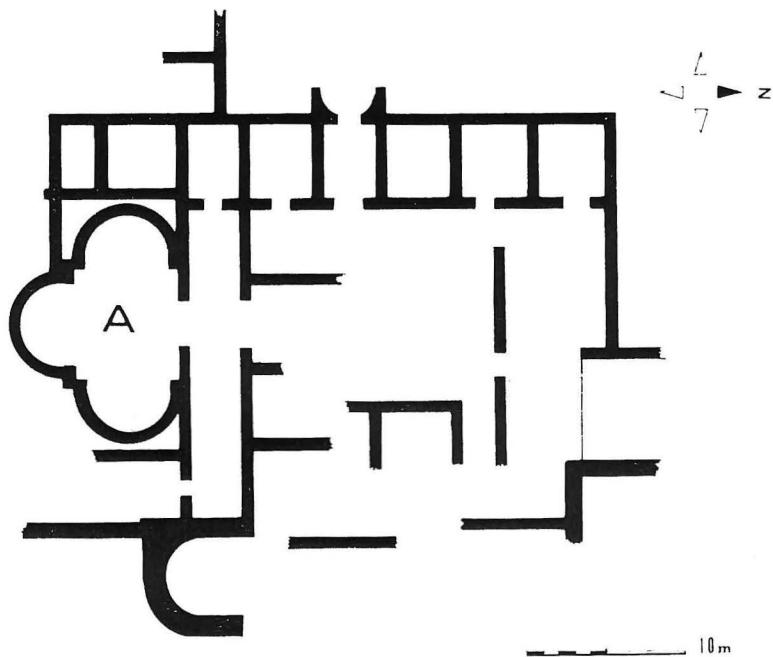
(Period II)

☒ 12 Liédena, Foz de Lumbier villa (Navaria)



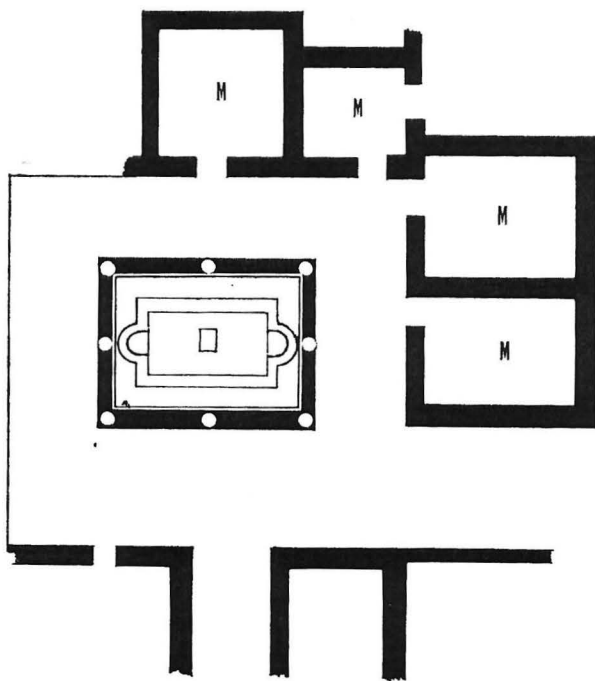
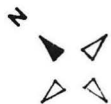
(vue cavalière)

☒ 13 Ecija, Cortijo de Fuentidueñas villa (Sevilla)



Ibid., planche XLVI-1.

14 Cabra, Fuente de las Piedras villa (Córdoba)



Ib

5 m.