

A New Species of the Genus *Pselaphorhinchites* from Mt. Tachibana, Fukuoka (Coleoptera, Curculionoidea, Rhynchitidae)

Sawada, Yoshihisa

<https://doi.org/10.5109/2612>

出版情報 : ESAKIA. 37, pp.117-119, 1997-09-30. Entomological Laboratory, Faculty of
Agriculture, Kyushu University

バージョン :

権利関係 :

**A New Species of the Genus *Pselaphorhynchites*
from Mt. Tachibana, Fukuoka (Coleoptera,
Curculionoidea, Rhynchitidae)**

Yoshihisa SA WADA

Division of Phylogenetics, Museum of Nature and Human Activities. Hyogo
Yayoigaoka 6, Sanda, Hyogo, 669-13 Japan

Abstract. A new species *Pselaphorhynchites morimotoi* sp. nov. is described from Mt. Tachibana, Fukuoka Japan.

Key words: Taxonomy, Coleoptera, Rhynchitidae, *Pselaphorhynchites*, new species

In 1987, Dr. Morimoto recommended me to research a delicate rhynchitid weevil. At that time, three males, which were collected simultaneously, were the only available specimens. Those were collected by Mr. Y. Kanamaru at Mt. Tachibana, Fukuoka. Japan, by the method of sweeping over the undergrowth. They presumably belong to the genus *Pselaphorhynchites* and seem to be included in a new species.

I intend to describe the species here on the adult morphology. It is a matter for regret that I can not include any biological information of the species, though six specimens were added from the same area one by one.

The genus *Pselaphorhynchites* Schilsky, 1903 is a rather small group composed of 36 species and distributed mainly in the Nearctic and Palaearctic Regions (Schilsky, 1903; Voss, 1932-1933; Hamilton, 1971). In Japan, one endemic species, *P. japonicus* is known (Morimoto, 1958) and this is the second species.

***Pselaphorhynchites morimotoi* sp. nov.**

[Japanese name: Tachibana-chibi-chokkiri]

Male. Black with bluish green lustre; derm with recumbent hairs: hairs brighter in ventral surface; only a few fine erect setae recognized on elytra. Head quadrate; frons flat, with strong punctures; eyes large, prominent laterally; rostrum slender, 1.1 times as long as pronotum, moderately curved; antennae inserted at the basal 1/3 of rostrum, with slender funicle and broad club; funicle with 1st and 2nd segments 4 times as long as broad and 7th segment as long as broad; club with 2nd segment quadrate or transverse.

Pronotum as broad as long, anterior margin truncate, rounded laterally, subapical and subbasal constrictions distinct; dorsum rugosely punctate with strong punctures and interstitial setigerous weak punctures. Postcoxal projections widely separate from each

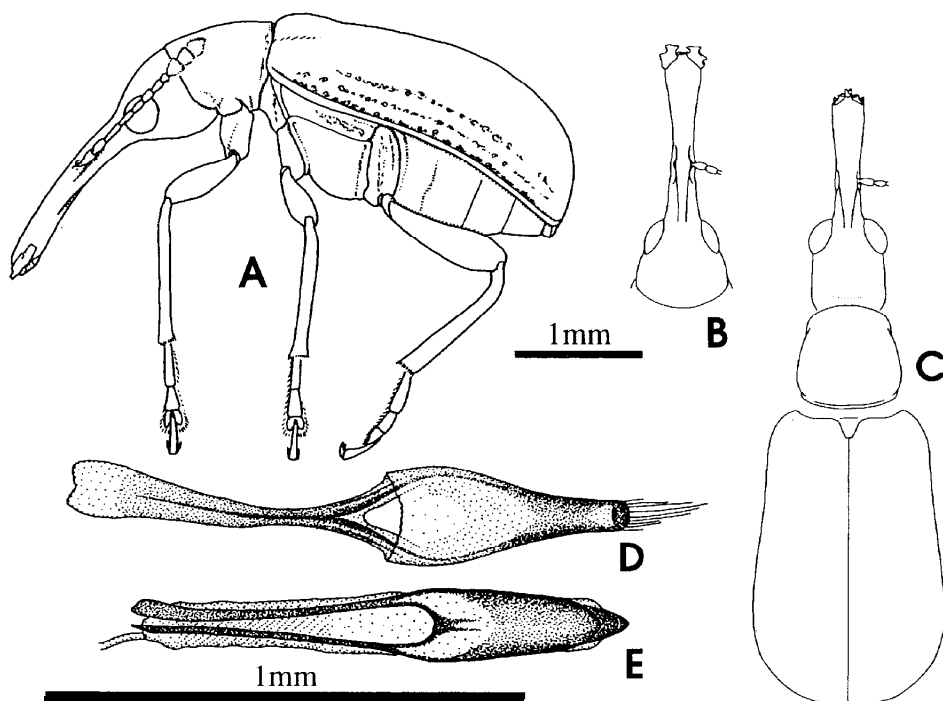


Fig. 1. *Pselaphorhynchites morimotoi* sp. nov. — A, Habitus in lateral view, female; B, Head in dorsal view, female; C, Habitus in dorsal view, male; D, Tegmen in dorsal view; E, Median lobe in dorsal view.

other by central sternal piece; procoxal setose sex patch absent. Scutellum tapered posteriorly.

Elytra dilated posteriorly, with striae closely punctate but scarcely grooved; intervals slightly convex, partially wrinkled. Intervals and bridge-pieces of striae covered with sparse setigerous granules; each granule with minute puncture at the socket of hair. Scutellar striae with some 4 punctures; 9th stria extended to near the apex of elytra. Mesosternum with secondary mesocoxal process incomplete, not connect with metasternum.

Legs with spindulate femora; femora without dorsal rows of spiculi; tibiae slender, almost straight; not milled on dorsal ridge, without spur; middle and hind tibiae mucronate. Tarsi slender with 2nd truncate at the apex, 1st segment as long as 2nd and 3rd combined; claws bifid, inner branch acute.

Abdomen sunken; tergum of 1st segment broadly membraneous; 2nd to 6th segments with tergites and independent spiracle sclerites; pygidium not costate along elytral margin.

Male genitalia almost symmetrical; median lobe with acute ventral plate; internal sac spiculate; endophallic sclerite absent.

Female. Head conical-globose; eyes smaller; rostrum longer, 1.6 times as long as pronotum; antenna inserted just behind the middle of rostrum; pronotum a little broader

than long, with subapical constriction indistinct; middle and hind tibiae with each one spur, not mucronate; abdomen with venter inflated.

Length: 3.5 - 4.0 mm (excl. rostrum).

Biology. Unknown; a newly emerged weevil was collected in the middle of May.

Holotype, male (Type No. 3057, Kyushu University), Mt. Tachibana, Fukuoka City.

3 1. iii. 1976, Y. Kanamaru leg.

Paratypes. 2 males, same data as holotype; 1 male, same locality as holotype. 27. iii. 1979, H. Takemoto leg., 1 female, iii. 1979, H. Takemoto leg.. 1 female, 21. iii. 1979. H. Takemoto leg., 1 female, 22-28. iv. 1979, K. Yamagishi leg., 1 male. 13. iv. 1983. Y. Sawada leg., 1 female, 23. iv. 1997, H. Kojima leg.

Distribution. Mt. Tachibana, Fukuoka City (Kyushu).

Remarks. This new species resembles to the Nearctic species, *P. cyanellus* but separable by longer rostrum, narrower pronotum and acute median lobe of male genitalia. It can be easily distinguished from the other Japanese species *P. japonicus* by the larger body size, bluish color and rough sculpture.

Holotype and two paratypes are preserved in the collection of the Entomological Laboratory of Kyushu University.

Acknowledgements

I would like to express my sincere thanks to Prof. Emer. K. Morimoto of Kyushu Univ. for his providing the opportunity and for giving guidance. Thanks are also due to the following entomologists for offering valuable materials, K. Yamagishi, H. Takemoto and H. Kojima.

References

- Hamilton, R. W., 1971. The Genus *Pselaphorkynckites* (Coleoptera: Rhynchitidae) in America North of Mexico. *Ann. ent. Soc. Amer.*, 64 (5): 982-996.
- Morimoto, K., 1958. Description of a new species of the genus *Pselaphorhynchites* Schilsky (Col., Attelabidae, Rhynchitinae). *Mushi*, 32: 97- 100.
- Schilsky, J., 1903. In Küster, H. C. & Kraatz, G. (ed.) "Käfer Europa's". 40, I- 100. A-PP, Nürnberg.
- Voss, E., 1932-1933. Monographie der Rhynchitinen-Tribus Rhynchitini. 2. Gattungsgruppe: Rhynchitina. V. 1. Teil der Monographie der Rhynchitinae-Pterocolinae. *Kol. Rdsck.*, **18**: 153-189, 19: 25-56.