

## A New Species of the Genus *Ochthebius* from Japan (Coleoptera, Hydraenidae)

Matsui, Eishi

Delgado, Juan Antonio

<http://hdl.handle.net/2324/2609>

---

出版情報 : ESAKIA. 37, pp.71-76, 1997-09-30. Hikosan Biological Laboratory, Faculty of  
Agriculture, Kyushu University

バージョン :

権利関係 :



## A New Species of the Genus *Ochthebius* from Japan (Coleoptera, Hydraenidae)<sup>1)</sup>

**Eishi MATSUI**

Entomological Laboratory, Faculty of Agriculture,  
Kyushu University, Fukuoka, 812 Japan

and

**Juan Antonio DELGADO**

Departamento de Zoología, Facultad de biología,  
Universidad de Murcia, 30071 Murcia, Spain

**Abstract.** The present paper contains description of a new species, *Ochthebius* (s.str.) *yumiae* Matsui et Delgado, from Japan, and a key to species of the genus *Ochthebius* Leach in Japan is given. The new species is similar to *O. danjo*, but distinguished by body size and color of the antennae and tibiae.

Key words: Taxonomy, Coleoptera, Hydraenidae, new species.

### Introduction

The genus *Ochthebius* Leach is widely distributed in the world. Palearctic species have been revised by Jäch (1989a, 1989b, 1989c, 1991a, 1991b, 1991c, 1992a, 1992b, 1993a, 1993b) and catalogued by Winkler (1925). Up to the present, five species of the genus *Ochthebius* have been recorded from Japan by Sharp (1884), Knish (1942), Matsui (1986), and Nakane (1963, 1965, 1970, 1990).

During a short excursion (April 27th to 29th, 1996) for collecting Hydraenidae from Kumamoto to Kagoshima Prefecture, Japan, the present new species, *O. yumiae*, was found at marine rock pools in Kagoshima Prefecture by the senior author.

Before going further, I express my hearty thanks to Prof. Dr. Katsura Morimoto, who gave me kind instructions and helpful literature, and to Mrs. Rie and Miss Yumi (senior author's family), who helped me to collect aquatic beetles in the field.

The Holotype is reserved in the Entomological Laboratory, Kyushu University, Fukuoka.

---

1) Contribution from the Entomological Laboratory, Faculty of Agriculture, Kyushu University, Fukuoka (Ser.4, No. 117).

The paratypes are deposited in authors's collection.

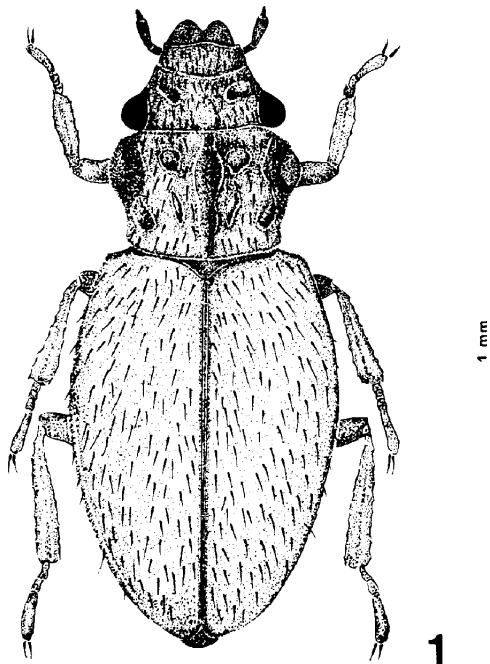
***Ochthebius (s. str.) yumiae*** Matsui et Delgado, sp. nov.

[Japanese name: Shiodamari-sesuji-darumagamushi]

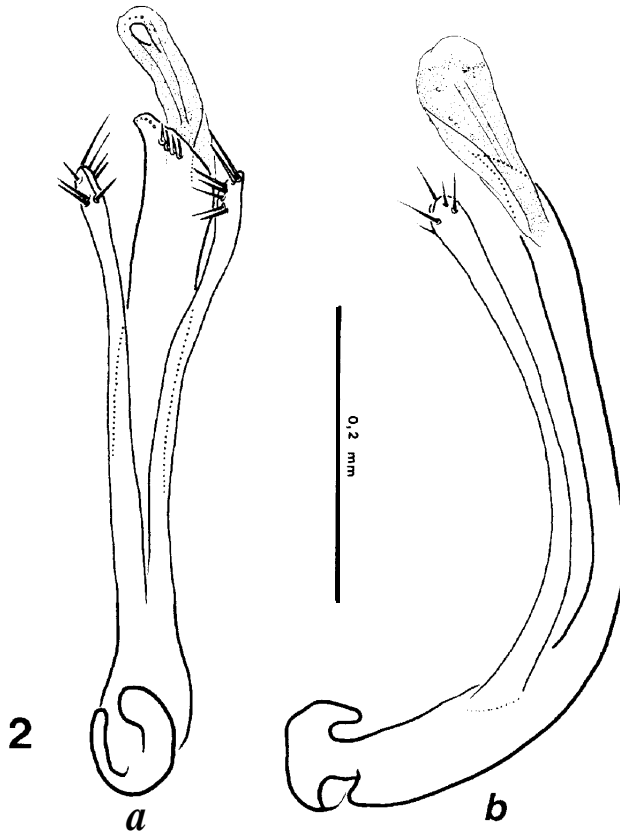
(Figs. 1-2)

Black, with the antennae and legs brown except coxae black, and apex of tarsi, apex and base of femora and base of tibiae blackish, and maxillary palpi blackish. Upper surface metallic black.

Body above rather convex, strongly shining and very sparsely clothed with very fine decumbent hairs. Head slightly flattened but uneven, with microsculpture. Labrum markedly transverse (13:4), with front margin very deeply emarginate at middle and rounded at both sides. Clypeus large, about as long as wide, rather convex, broadly truncate in front, and separated from front by a distinct, somewhat concave transverse sulcus posteriorly. Eyes large and strongly prominent laterally, and the interocular space with a pair of deep impressions, which are elongate in shape, and with one very small feeble fovea between the impressions. Terminal joint of maxillary palpi very short, acuminate at apex and much narrower than penultimate, which is elongate, scarcely longer than the 2nd and dilated toward apex.



**Fig.1.** Habitus of *Ochthebius (s. str.) yumiae* Matsui et Delgado, sp. nov.



**Fig. 2.** Male genitalia of *Ochthebius* (s. str.) *yumiae* Matsui et Delgado — (a) ventral aspect; (b) lateral aspect.

Prothorax subcordate, rather transverse (51:38), widest at anterior third, where the sides strongly rounded-expanded outwardly, then gradually narrowed posteriorly, with the sides slightly arcuate-emarginate between anterior expansion and hind angle, anterior and posterior angles rounded, and the margins fringed with a translucent thin membrane (except side margins of the widest portion), which is particularly broad at anterior and posterior edges; disk uneven, with two pairs of impressions on both sides of the median longitudinal furrow, which is strongly sulcate, the anterior impressions small and rounded, and the posterior strong, elongate, oblique and approximated to median line posteriorly.

Elytra oval, widest at middle, the sides gently arcuate from base to apex; disk with very fine decumbent hairs, shining and not microsculptured, but rugged.

Under surface thickly and minutely pubescent except for two apical sternites of abdomen, which are shining and sparingly with fine decumbent hairs. Prosternum slightly longitudinal carinate medially. Mesosternum and metasternum densely pubescent. Legs relatively slender, not closely bearing hairs, femora weakly thickened, tibiae slender,

narrowed at base, tarsi very slender, particularly terminal segment very long. Male genitalia as shown in Fig.2.

Body length: 2. Imm. Width: 0.9mm.

Distribution. Japan (Kyushu: Kagoshima Pref.).

Holotype male (Type No.3049 Kyushu Univ.), 28.IV.1996, Hinokami, Makurazaki City, Kagoshima Pref., Matsui, E. leg.

Paratypes. 38exs., 28.IV.1996, ditto., Matsui, E. leg., 17exs., 24.XI.1996, ditto. Matsui, E. leg., 13exs., 25.II.1997, ditto, Matsui, E. leg.

This species is very similar to *O. danjo* from which it can be distinguished by body size and color of the antennae and tibiae.

### Key to Species of the Genus *Ochthebius* Leach from Japan

1. Elytral epipleura reaching the apex of suture. Last segment of maxillary palpi fairly short. Second segment of antenna cup shaped. Base of pronotum not margined. Rows of punctures on elytra usually deeply impressed, thus intervals convex. Explanate margin of elytra and epipleura well developed and wide. Male fairly convex than female (subgenus *Enicocerus* Steph.). ..... 2
- Elytral epipleura not reaching the apex of suture. Last segment of maxillary palpi long. Base of pronotum margined. Second segment of antenna not cup-shaped. (subgenus *Ochthebius* s.str. Chenu). ..... 3
2. Black. Two impressions of clypeus oblique and rather small. Front margin of labrum emarginate at middle and both sides strongly prominent. Membrane of the sides of prothorax fairly broad. Pronotum with a scarce transverse furrow. Length 2.0 mm. Honshu (Kobotoke). ..... *hasegawai* Nakane et Matsui
- More black. Two impressions of clypeus arcuate and large. Front margin of labrum emarginate at middle, with sides smoothly rounded. Membrane of the sides of prothorax narrow. Pronotum without a transverse furrow. Length 2.3 mm. Adhered to rocks in mountain stream. Hokkaido, Honshu, Kyushu ..... *nakanei* Matsui
3. Pronotum with a shallow, but distinct transverse furrow. (*foveolatus* species group) Front margin of labrum semicircularly emarginate at middle. Apical corners of prothorax sharply projected. Length 1.5- 1.8 mm. Honshu, Shikoku, Kyushu. .... *satoi* Nakane
- Pronotum only with a longitudinal furrow, without a transverse one. Body larger in size. (*punctatus* species group). ..... 4
4. Elytral punctures usually not arranged in regular striae. Body surface covered with long whitish hairs. Elytra two-thirds as broad as long. Body relatively thin. Front margin of labrum emarginate at middle. Metallic bronzy or black. .... 5
- Elytral punctures arranged in regular striae. Body surface covered very sparsely with whitish hairs. Elytra three quarters as broad as long. Body relatively thick. Front margin of labrum not emarginate at middle but gently rounded. Metallic black. Length 1.9-2.1 mm. Honshu, Kyushu. .... *inermis* Sharp
5. Black, with metallic bronzy tinges dorsally. Antennae and tibiae yellowish brown.

- Length 2.3 mm. Danjo-gunto (Nakanoshima Is.). ..... *danjo* Nakane  
 -. Black, with metallic black tinges dorsally. Antennae brown, tibiae blackish brown.  
 Occurred at marine rock pools. Length 2.1 mm. Kyushu (Kagoshima).  
 ..... *yumiae* Matsui et Delgado

### References

- Chiesa, A., 1959. *Hydrophilidae Europae (Col. Palpicornin)*. 199pp., 19 pls., (325 figs.).  
 Ganglbauer, L., 1904 : Hydrophilidae. In "Die Käfer von Mitteleuropa IV(1)", pp. 141-286.  
 Jäch, M.A., 1989a. Revision of the Palearctic species of the genus *Ochthebius* Leach. I. The So-called Subgenus "*Bothochius*" (Coleoptera, Hydraenidae). *Koleopt.Rdsch*, **59**: 95-126.  
 Jäch, M.A., 1989b. Revision of the Palearctic species of the genus *Ochthebius* Leach.II. The subgenus *Cobalius* Rey (Hydraenidae, Coleoptera). *Zeitsch. Arbeitsgem.Österr. Entomol.*, **41**: 41-51.  
 Jäch, M.A., 1989c. Revision of the Palearctic species of the genus *Ochthebius* Leach.III. The *metallescens*-group (Hydraenidae, Coleoptera). *Linzer biol. Beitr.*, **21/2**: 35 1-390.  
 Jäch, M.A., 1991a. Revision of the Palearctic species of the genus *Ochthebius* Leach.VI. The *marinus* group (Hydraenidae: Coleoptera). *Ent. Basil*, **14**: 101- 145.  
 Jäch, M.A., 1991b. Revision of the Palearctic species of the genus *Ochthebius* Leach.VII. The Subgenus *Enicocerus* Stephens (Coleoptera : Hydraenidae). *Elytron*, **5**: 139-1 58.  
 Jäch, M.A., 1991c. Revision of the Palearctic species of the genus *Ochthebius* VII. The *foveolatus* group (Coleoptera: Hydraenidae). *Koleopt. Rdsch*, **61**: 61-94.  
 Jäch, M.A., 1992a. Revision of the Palearctic species of the genus *Ochthebius* Leach, 18 15. IX. The *andraei* and *notabilis* species groups (Coleoptera: Hydraenidae). *NachrBl. bayer. Ent.*, **41**(1): 7-21.  
 Jäch, M.A., 1992b. Revision of the Palearctic species of the genus *Ochthebius* LEACH X. The *punctatus* species group (Hydraenidae: Coleoptera). *Bull. Annls Soc.r.belge Ent.*, **128**: 167-195.  
 Jäch, M.A., 1993a. Revision of the Palearctic species of the genus *Ochthebius* XI. The subgenus *Calobius* Wollaston, 1854 (Insecta: Coleoptera: Hydraenidae). *Reichenbachia, Mus. Tierkd. Dresden* , **30**(7): 33-45.  
 Jäch, M.A., 1993b. Revision of the Palearctic species of the genus *Ochthebius* Leach 18 15. XII. additional notes on the *notabilis* species group (Coleoptera: Hydraenidae). *Entomol. Probl.*, **24**( 1): **59-62**.  
 Knish, A., 1942. Hydrophilidae. In "Junk Coleopterorum Catalogus pars 79", pp.306.  
 Kuhnt, P., 1913. (Hydrophilidae). Illustrierte Bestimmungs-Tabellen der Käfer Deutschlands: 416-439.  
 Kuwert, A., 1890. Bestimmungs-Tabelle der Hydrophiloiden Europas, Westasiens und Nordafrikas. *Verh.naturf. Ver Brünn*, **28**: 3-121.  
 Lohse, G.A., 1971. Palpicornia In "Die Käfer Mitteleuropas", **3** : 95-156.

- Matsui, E., 1986. Notes on some new Hydrophiloidea from Japan (Coleoptera). *Spec. Bull. Jap. Soc. Col.*, 2: 8 1-90.
- Nakane, T., 1963. Hydraenidae & Hydrophilidae. In "Iconographia Insectorum Japonicorum Colore Naturali Edita II", pp. 63-66, Pls. 32-33. (in Japanese)
- Nakane, T., 1965. New or little-known Coleoptera from Japan and its adjacent regions. XXIII. *Fragm. Coleopt.*, (13): 51-54.
- Nakane, T., 1970. A check list of Hydrophiloidea of Japan (Col.). *Nature & Insects*, 5(5): 25-29.
- Nakane, T., 1990. Notes on some little-known beetles (Coleoptera) in Japan 6. *Kita-Kyû shû no Konchu*, 37(2): 61-68. plt.1.
- Ohmomo, S., 1995. Five aquatic beetles collected in Hokkaido. *Gekkan-mushi*, 298: 16-17. (in Japanese)
- Portevin, G., 193 1. Palpicornia. In "Histoire Naturelle des Coleopteres de France". pp. 7 1-114.
- Satô, K. & S. Ohmomo, 1995. Distributional notes of beetles in Tochigi Prefecture (4). *Insect*, 46( 1): 14-23. (in Japanese)
- Sharp, D., 1884. The water-beetles of Japan. *Trans. ent. Soc. Lond.*, 1884: 439-464.
- Winkler, A., 1925. Palpicornia. In "Catalogus Coleopterorum region is Palearcticae". pp. 24 1-262.
-