

Tenebrionidae of the Nansei Islands X (Coleoptera)

Chujo, Michitaka

<https://doi.org/10.5109/2598>

出版情報 : ESAKIA. 36, pp.135-141, 1996-01-31. Entomological Laboratory, Faculty of
Agriculture, Kyushu University

バージョン :

権利関係 :

Tenebrionidae of the Nansei Islands X (Coleoptera)¹⁾

Michitaka CHÛJÔ

Hikosan Biological Laboratory, Faculty of Agriculture,
Kyushu University, Hikosan, Fukuoka, 824-07 Japan

Abstract Tenth report on the Tenebrionidae of the Nansei Islands, Japan, includes descriptions of two new species, *Micropedinus rotundicollis* sp. nov. from Iriomotejima Isl. and Yonagunijima Isl. and *Laenatakara* sp. nov. from Takarajima Isl., and a list of fourteen species of the fauna on Taketomijima Isl. is enumerated.

Micropedinus rotundicollis sp. nov.

Narrowly elliptic, weakly depressed, lustrous, light brown to brown, often darkened at middle part.

Head nearly semicircular, sparsely and strongly punctate, frons to vertex convex. Eyes large, rather transverse, roundly warped outwards, roughly faceted. Antennae not reaching basal margin of pronotum, apical 5 segments loosely clavate, relative length of each segments from base to apex, 4.0 : 2.0 : 3.0 : 2.5 : 2.5 : 2.5 : 2.5 : 3.0 : 3.0 : 3.0 : 5.0. Apical segments of maxillary palpus weakly securiformed.

Pronotum rather transverse, 7 : 10, evenly convex, sparsely and strongly punctate, wholly and very narrowly marginate, front margin shallowly sinuate, front corners rounded, sides roundly warped outwards, only subbasal part nearly parallel-sided, hind corners obtusely angulate, hind margin very weakly warped posteriorly. Prosternum strongly convex towards middle, prosternal process keel-shaped after inter coxal cavity. Scutellum very small, triangular, very sparsely punctate.

Elytra gently convex, sparsely, irregularly and very strongly punctate, basal margin nearly of the same with pronotum at their bases, shoulders obtusely angulate, sides gently warped out-

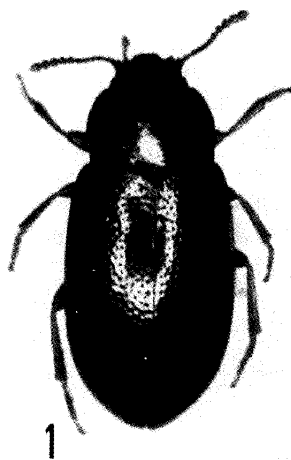


Fig. 1. *Micropedinus rotundicollis*
sp. nov.

¹⁾ Contribution from the Hikosan Biological Laboratory, Faculty of Agriculture, Kyushu University, Hikosan (Ser. 4, No. 15).

wards, very narrowly and wholly marginate. Under surface evenly and sparsely punctate, every puncture with a short hair. Episternum narrowing towards apex of elytra. Mesosternum with median part very deeply depressed in V-shape. Metasternum roundly convex, sparsely, strongly punctate.

Femur rather thick. Tibiae thickened towards apex, apex obliquely truncate, densely setaceous on upper surface, with dense spines on under surface, especially dense near outside margin. Front tarsus with basal 4 segments very strongly flabellate in male, weakly flabellate in female, 4th segment rather small, apical segment thickened anteriorly, middle tarsus with basal 4 segments very weakly flabellate, hind tarsus with 1st segment slightly thickened apically. Visible abdominal sternites roundly convex, evenly and sparsely punctate.

Length: 3.9-4.1mm. Width: 1.7-1.8mm.

Holotype: male (Type No. 3042, Kyushu Univ.), Hikawa, Yonaguni Is., Nansei Isls., Japan, 11. v. 1974, H. Irie leg. Paratypes: 3 males, same collecting data as holotype; 1 male & 3 females, Shirahama, Iriomotejima Is., Nansei Isls., Japan, 3. x. 1963, K. Morimoto leg.; 1 female, Otomi, Iriomotejima Is., Nansei Isls., Japan, 25. iv. 1969, H. Makihara leg.

This new species is closely related with *M. pallidipennis* Lewis, 1894 from Japan, but is separated from the latter by the following characters: punctures on the whole surface sparser and much weaker, sides of pronotum more strongly rounded outwards, and femur thicker.

Laena takara sp. nov.

Gord-formed, strongly constricted in middle part, wholly, very strongly and sparsely punctate, every punctures with erect and long hair, dark brown, lustrous, mouth parts, antennae and legs light brown.

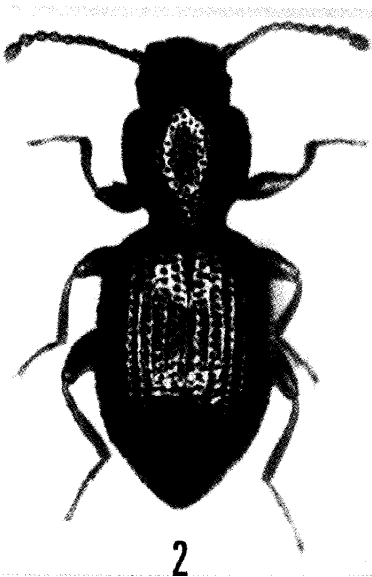


Fig. 2. *Laena takara* sp. nov.

Head roundly convex, gently narrowing anteriorly, front margin very shallowly sinuate, very strongly and sparsely punctate, clypeal suture depressed. Gena roundly convex, not expanded laterally. Inter ocular area about 5 times as wide as transversal diameter of eye. Eyes small, strongly prominent laterally. Antennae moniliformed, 1st segments nearly cylindrical, 2nd to 10th ones rounded, terminal ones drop formed, relative length of each segment from base to apex: 10 : 4 : 5 : 4 : 4 : 4 : 5 : 5 : 5 : 5 : 12. Maxillary palpus with terminal segments triangular. Gular suture shallowly and widely depressed.

Pronotum obovatus, roundly convex, width 1.07 times as wide as long, front margin near-

ly straight, front comers widely rounded, sides very finely marginate, hind comers not recognized from above and continuously rounded to round hind margin.

Prosternum strongly convex, transversely carved, prosternal process very narrowly boat-shaped, the apex bent down and attached to hind margin of prosternum. Scutellum triangular, very tiny. Elytra strongly constricted at basal part, and obovately rounded, sides narrowly, wholly marginate, not recognized from above, apex obtuse, very strongly striate-punctate, interstices slightly convex, interspaces of the punctures very smooth. Mesosternum convex, hind margin rather deeply, roundly sinuate, inter space of hind coxal cavities rather widely separated each other. Visible abdominal sternites roundly convex, terminal segment densely punctate. Every femora with groove at inside to receive tibia, edges of the grooves with a spur at 2/3 from base. Every tibia rather short, gently, roundly bent inside, weakly depressed. Front tarsus with terminal segments a little shorter than the rest put together.

Length: 4.0-5.3mm. Width: 1.4-1.9mm.

Holotype: male (Type No. 3043. Kyushu Univ.), Mt. Imakiradake, Takarajima Is., Nansei Isls., 21. iii. 1992, S. Nomura leg. Paratypes: 3 males & 2 females, same collecting data as holotype; 5 males & 6 females, Arakizaki, Takarajima Is., Nansei Isls., 22. iii. 1992, S. Nomura leg.; male, Oh-ike, Takarajima Is., Nansei Isls., 25. iii. 1992, S. Nomura leg.

Distribution: Takarajima Isl., Nansei Islands, Japan.

This new species is closely related with *L. rotundicollis insularis* Kaszab, 1964 from Amami-Oshima Is., but is separated from each other by the following characters:

L. rotundicollis insularis

Head nearly flat, eyes relatively larger, inter ocular area about 4.3 times as wide as transversal diameter of eye, pronotum strongly narrowing at basal 1/2, elytra gently sloped at basal comers.

***L. takara* sp. nov.**

Head strongly convex, eyes smaller, inter ocular area about 5 times as wide as transversal diameter of eye, pronotum strongly narrowing at basal 1/4, elytra rather square at basal corners.

A fauna1 list of Tenebrionidae on Taketomijima Isl.

All the specimens recorded were collected by myself on Taketomijima Isl. in March 15 and November 13, 1995. Thirteen species denoted with dagger are new record from this island.

PEDININI

1. *Diphyrrhynchus iriomotensis* M. T. Chûjô, 1966†

Diphyrrhynchus irimorensis M. T. Chûjô, 1966, J. Fac. Agr., Kyushu Univ., 14(1): 4-5, Pl.

2, Fig. 1 (missprint: *Diphyrrhynchus*).

Spec. exam.: 27 exs., 15. iii. 1995.

Gen. distr.: Japan [Nansei Isls. (Ishigakijima Isl., Taketomijima Isl. & Iriomotejima Isl.); Formosa.

2. *Diphyrrhynchus oharensis* Nakane, 1973†

Diphyrrhynchus oharensis Nakane, 1973, Mem. Nat. Sci. Mus. Tokyo, (6): 104-105, Pl. 2, Fig. 3.

Spec. exam.: 37 exs., 1.5. iii. 1995; 7 exs., 13. xi. 1995.

Gen. distr.: Japan [Nansei Isls. (Miyakojima Isl., Taketomijima Isl., Iriomotejima Isl. & Yonagunijima Isl.)]; Formosa (Lanhsu Isl. & Lutao Isl.).

OPATRINI

3. *Gonocephalum coenosum* Kaszab, 1952-i

Gonocephalum coenosum Kaszab, 1952, Ent. Arb. Mus. G. Frey, 3(2): 643-646, Figs. 413-415.

Spec. exam.: 1 ex., 15. iii. 1995.

Gen. distr.: Japan [Honshu, Shikoku, Kyushu, Tsushima Isl. & Nansei Isls. (Miyakojima Isl., Ishigakijima Isl., Taketomijima Isl. & Iriomotejima Isl.)]; China, Korea & Formosa.

4. *Gonocephalum kondoi* Masumoto, 1983†

Gonocephalum kondoi Masumoto, 1983, Ent. Rev. Japan, 38(2):173-175, 3 figs.

Spec. exam.: 13 exs., 15. iii. 1995.

Gen. distr.: Japan [Nansei Isls. (Ishigakijima Isl., Taketomijima Isl. & Iriomotejima Isl.)].

5. *Caedius maderi minor* Nakane, 1963†

Caedius maderi minor Nakane, 1963, Fragm. Col., Tokyo, (6): 26.

Spec. exam.: 25 exs., 13. xi. 1995.

Gen. distr.: Japan [Nansei Isls. (Takarajima Isl., Taketomijima Isl. & Yonagunijima Isl.)].

6. *Nesocaedius minimus* (M. T. Chûjô, 1966) †

Caedius minimus M. T. Chûjô, 1966, J. Fac. Agr., Kyushu Univ., 14(1): 9, Pl. 2, Fig. 2.

Nesocaedius minimus: Shibata, 1979, Ent. Rev. Japan, 33(1/2): 73.

Spec. exam.: 20 exs., 13. xi. 1995.

Gen. distr.: Japan [Nansei Isls. (Taketomijima Isl., Iriomotejima Isl. & Yonagunijima Isl.)].

BOLITOPHAGINI

7. *Dicraeosis carinatus carinatus* Gebien, 1913†

Dicraeosis curinutus Gebien, 1913, Arch. Naturg., 79, 9: 14.

Spec. exam.: 1 ex., 15. iii. 1995.

Gen. distr.: Japan [Nansei Isls. (Amami-Oshima Isl., Okinawa-Honto Isl., Kumejima Isl., Miyakojima Isl., Ishigakijima Isl., Taketomijima Isl., Iriomotejima Isl., & Yonagunijima Isl.)]; Formosa.

8. *Bradymerus clathratus* Schaufuss, 1887†

Bradymerus clathratus Schaufuss, 1887, Horae Soc. Ent., 21: 134.

Spec. exam.: 6 exs., 13. xi. 1995.

Gen. distr.: Japan [Nansei Isls. (Ishigakijima Isl., Taketomijima Isl., Iriomotejima Isl. & Haterumajima Isl.)]; Formosa (Lanhsu Isl.), Philippines, Borneo, Java, Sumatra, Andamann, Nias, Celebes & Assam.

DIAPERINI

9. *Ceropria induta induta* (Wiedemann, 1819) †

Helops indutus Wiedemann, 1819, Zool. Mag., 1(3): 164.

Ceropria induta: Castelnau et Brulle, 1831, Ann. Soc. Nat. France, 23: 396(72).

Spec. exam.: 1 ex., 13. xi. 1995.

Gen. distr.: Japan proper [incl. Nansei Isls. (Tanegashima Isl., Yakushima Isl., Nakanoshima Isl., Akusekijima Isl., Takarajima Isl., Amami-Oshima Isl., Tokunoshima Isl., Ishigakijima Isl., Taketomijima Isl., Iriomotejima Isl. & Yonagunijima Isl.)]; Korea, S. China, Formosa & S. E. Asia proper.

10. *Pentaphyllus dilatipes* Shibata, 1978†

Pentaphyllus dilatipes Shibata, 1978, Ent. Rev. Japan, 32(1/2): 22-24.

Spec. exam.: 2 exs. 13. xi. 1995.

Gen. distr.: Japan [Nansei Isls. (Taketomijima Isl. & Iriomotejima Isl.)]; Formosa.

TENEBRIONINI

11. *Encyalesthus exularis* Gebien, 1913†

Encyalesthus exularis Gebien, 1913, Arch. Naturg., A, 9: 31-32.

Spec. exam.: 1 ex., 13. xi. 1995.

Gen. distr.: Japan [Nansei Isls. (Ishigakijima Isl., Taketomijima Isl. & Iriomotejima Isl.)]; Formosa, Assam & Aborland.

CNODALONINI

12. *Hemicera hajimei* Masumoto, 1983†

Hemicera hajimei Masumoto, 1983, Ent. Rev. Japan, 38(1): 86-88, Figs. 7 & 10.

Spec. exam.: 43 exs., 13. xi. 1995.

Gen. distr.: Japan [Nansei Isls. (Ishigakijima Isl., Taketomijima Isl. & Iriomotejima Isl.)].

13. *Hemicera sakishimensis* M. T. Chûjô, 1978†

Hemicera sakishimensis M. T. Chûjô, 1978, Esakia, Kyushu Univ. Publ. Ent., (12): 8-10, Fig. 2.

Spec. exam.: 22 exs., 13. xi. 1995.

Gen. distr.: Japan [Nansei Isls. (Kurimajima Isl., Miyokojima Isl., Ishigakijima Isl., Taketomijima Isl., Iriomotejima Isl. & Yonagunijima Isl.)].

AMARYGMINI**14. *Amarygmus callichromus* Fairmaire, 1897**

Amarygmus callichromus Fairmaire, 1897, Bull. Soc. Ent. France: 70.

Spec. exam.: 1 ex., 13. xi. 1995.

Gen. distr.: Japan [Nansei Isls. (Ishigakijima Isl., Taketomijima Isl., Iriomotejima Isl., Kuroshima Isl. & Haterumajima Isl.)]; Formosa.

Acknowledgements

I wish to express my appreciation to Prof. Dr. K. Morimoto, the head of Hikosan Biological Laboratory, for making this study possible and for his continual kind and valuable advices to my study. Also, I am thankful to Assoc. Prof. Dr. O. Tadauchi and Assist. Prof. S. Kamitani of Entomological Laboratory, Kyushu University for various help. I express my sincere thanks to Dr. S. Nomura of Department of Zoology, National Science Museum, Tokyo and Mr. H. Irie, Fukuoka City for offering of valuable specimens. And particular thanks are due to Prof. Emeritus, Dr. M. Chûjô of Kagawa University for his various help to my study.

Selected References

- Chûjô, M. T., 1963. Cicindelid, Scarabaeid and Tenebrionid beetles (Coleoptera) from the Yaeyama Group collected by the Kyushu University Expedition. *Rep. Commit. Foreign Sci. Res., Kyushu Univ.*, (1): 91-94.
- Chûjô, M. T., 1966. Taxonomic study of the Tenebrionidae (Coleoptera) of the Ryukyu Islands. *J. Fuc. Agr., Kyushu Univ.*, **14**(1): 1-32, 2 pls.
- Chûjô, M. T., 1975. Tenebrionidae of the Nansei Islands I (Coleoptera). *Esakia*, **(9)**: 1-23, 2 pls.
- Chûjô, M. T., 1977. Tenebrionidae of the Nansei Islands II (Coleoptera). *Esakia*, (10): 1-19, 2 figs.
- Chûjô, M. T., 1978. Tenebrionidae of the Nansei Islands III (Coleoptera). *Esakia*, (11): 63-80, 12 figs.
- Chûjô, M. T., 1978. Tenebrionidae of the Nansei Islands IV (Coleoptera). *Esakia*, (12): 1-16, 3 figs.
- Chûjô, M. T., 1979. Tenebrionidae of the Nansei Islands V (Coleoptera). *Esakia*, (14): 31-56, 5 figs.
- Chûjô, M. T., 1982. Tenebrionid Beetles from Ishigaki I. and Iriomote I. collected by Dr. K. Baba. *Essa Konchu Dokokui Kaiho*, (53): 59-62, 4 figs. (in Japanese)
- Chûjô, M. T., 1982. Tenebrionidae of the Nansei Islands VII (Coleoptera). *Spec. Iss. Mem. Retir. Emer. Prof. M. Chujo*: 87-101. (In Japanese)
- Chûjô, M. T., 1985. Tenebrionidae, In Kurosawa et al. (eds.), Color. *Illustr. Col. Japan*, **III**: 295-338, Pls. 49-57, Hoikusha (in Japanese)
- Hozumi, T., 1971. Tenebrionidae of Yaeyama Group and Yonagunijima. *Nut. & Ins.*, Tokyo, **6**(9): 33. (In Japanese)

- Kaszab, Z., 1964. Ueber die Tenebrioniden einiger japanischen Inseln (I)(Coleoptera). *Ent. Rev. Japan*, **16**(2): **39-49**.
- Kaszab, Z., 1964. Ueber die Tenebrioniden einiger japanischen Inseln (II)(Coleoptera). *Ent. Rev. Japan*, **17**(1): 1-10.
- Masumoto, K., 1981. Notes and descriptions of Japanese Tenebrionidae (I). *Ent. Rev. Japan*, **35**(1/2): **29-32**, **3** figs.
- Masumoto, K., 1983. Notes and descriptions of Japanese Tenebrionidae (II). *Ent. Rev. Japan*, **38**(1): **81-92**, **22** figs.
- Masumoto, K., 1983. Notes and descriptions of Japanese Tenebrionidae (III). *Ent. Rev. Japan*, **38**(2): **173-176**, **1** fig.
- Masumoto, K., 1994. A Study of the Asian Species of the Genus *Ceropria* (Coleoptera, Tenebrionidae, Diaperini). *Jpn. J. Ent.*, **62**(4): 763-774, 14 figs.
- Nakane, T., 1963. New or little known Coleoptera from Japan and its adjacent regions. XIX. *Fragm. Col.*, Tokyo, (6): 26; (7): 28.
- Nakane, T., 1973. Notes on some species of Tenebrionidae from the Yaeyama Islands (Insecta: Coleoptera). *Mem. Nat. Sci. Mus. Tokyo*, (6): 103-108, pl. 11.
- Nakane, T., 1975. On the Heteromorous Coleoptera occurring in Kyushu including Yakushima and Tanegashima. *Mem. Nat. Sci. Mus., Tokyo*, (8): 161-172, Pl. 16. (in Japanese)
- Nakane, T., 1984. On the Coleoptera occurring in Yaku-shima Island. *Conserv. Rep. Yakushima Wilderness Area, Kyushu, Japan*: **587-620**. (in Japanese)
- Nakane, T., 1985. New or little-known Coleoptera from Japan and its adjacent regions. *Fragm. Col., Tokyo*, (38/40): **162-164**, figs. 26-35.
- Okadome, T., 1978. *The Insects Fauna of Yakushima Island, South Japan*. Yakucho Educ. Commit., Kagoshima Pref., Japan: 130-133.
- Shibata, T., 1964. Record of *Bradymerus clathratus* Schaufuss. *Ent. Rev. Japan*, **17**(2): **46**.
- Shibata, T., 1978. Notes on the Tenebrionidae from Taiwan and Japan, 1. (Coleoptera). *Ent. Rev. Japan*, **32**(1/2): 19-27.
- Shibata, T., 1979. Notes on the Tenebrionidae from Taiwan and Japan, II. (Coleoptera). *Ent. Rev. Japan*, **33**(1/2): **67-73**.
- Shibata, T., 1980. Notes on the Tenebrionidae from Taiwan and Japan, III. (Coleoptera). *Ent. Rev. Japan*, **34**(1/2): **63-74**, **4** figs.
- Sawada, K., 1986. Distributional record of Tenebrionidae from Nansei Islands. *Coleopterist's News*, (73): **3**. (in Japanese)