

Korean Tenebrionidae (Insecta, Coleoptera)

Chujo, Michitaka

Lee, Chang Eon

<http://hdl.handle.net/2324/2568>

出版情報 : ESAKIA. 33, pp.109-122, 1993-03-31. Hikosan Biological Laboratory, Faculty of
Agriculture, Kyushu University

バージョン :

権利関係 :



Korean Tenebrionidae (Insecta, Coleoptera)^{1), 2)}

Michitaka CHŪJŌ

Biological Laboratory, Faculty of Agriculture, Kyushu
University, Hikosan, Japan 824-07

and

Chang Eon LEE

Department of Biology, College of Natural Sciences, Kyungpook
National University, Taegu, 701-702 Korea

Abstract. Thirty-one tenebrionid species recorded here are based on the collection of the results from the Korea-Japan Co-operative Science Program on "The Evolution and Biogeography of the Insects in the East Asia" in 1991 and 1992. And a part of specimens collected by Prof. Emeritus T. Shirôzu of Kyushu Univ. in 1940 are treated. Among of them three new species, *Scaphidema michihidei*, *Cryphaeus albopilosus* and *Cryphaeus rotundicollis* are described and 13 species are newly recorded from mainland of Korea.

In this collection holotype specimens are all preserved in the collection of Dr. C. E. Lee, Prof. Kyungpook National University of Korea. And the other known specimens are preserved in both, Kyungpook National University of Korea and Kyushu University of Japan.

OPATRINI

1. Gonocephalum persimile (Lewis)

- 1) Results from the Korea-Japan Co-operative Science Program on "The Evolution and Biogeography of the Insects in the East Asia". No. 17.
- 2) Contribution from the Hikosan Biological Laboratory, Faculty of Agriculture, Kyushu University, Hikosan (Ser. 4, No. 9).

* Asterisk shows the species has hitherto been unrecorded from mainland of Korea.

Opatrum persimile Lewis, 1894, Ann. Mag. Nat. Hist., [6], 13(77): 381 (Japan: Honshu),

Spec. exam.: 42 exs., Kwangnung, Pochon Gun, Kyonggi Do, Korea, 14-19. v. 1992, M. T. Chûjô leg.; 5 exs., Pupan Myeon, Hongcheon Gun, Kangweon Do, Korea, 20. v. 1992, M. T. Chûjô leg.; 3 exs., Bougmyeong Ri, Chunchon Gun, Kangweon Do, Korea, 23. v. 1992, M. T. Chûjô leg.

Gen. distr.: Korea, Ussuri, E.-N. China & Japan (Hokkaido, Honshu, Shikoku, Kyushu, Sadogashima Is., Mikurajima Is., Hachijojima Is., Okinoshima Is. & Tsushima Is.).

2. *Gonocephalum pubens* (Marseul)

Opatrum pubens Marseul, 1876, Ann. Soc. Ent. France, (6) 5: 97-98 (Japan: Honshu).

Spec. exam.: 41 exs., Sanju Beech, Namhae Do Is., Kyongsang-nam Do, Korea, 18. vii. 1991, M. T. Chûjô leg.

Gen. distr.: Korea (incl. Chejudo Island), China, Formosa, India & Japan (Honshu, Shikoku, Kyushu & Awashima Is.).

3. *Opatrum subaratum* Faldermann

Opatrum subaratum Faldermann, 1835, Mem. Acad. St. Petersburg, 2: 413 (Mongolia).

Spec. exam.: 5 exs. (at light), Pupan Myeon, Hongcheon Gun, Kangweon Do, Korea, 22. vii. 1992, M. T. Chûjô leg.; 1 ex. (at light), Gamjong Ri, Chunchon Gun, Kangweon Do, Korea, 23. vii. 1992, M. T. Chûjô leg.

Gen. distr.: Korea, Mongolia, N.-E. China, around Dead Sea & Japan.

BOLITOPHAGINI

4. *Boletoxenrts bellicosus* (Lewis)*

Atasthalus bellicosus Lewis, 1894, Ann. Mag. Nat. Hist., [6], 13(77): 386-387 (Japan: Honshu).

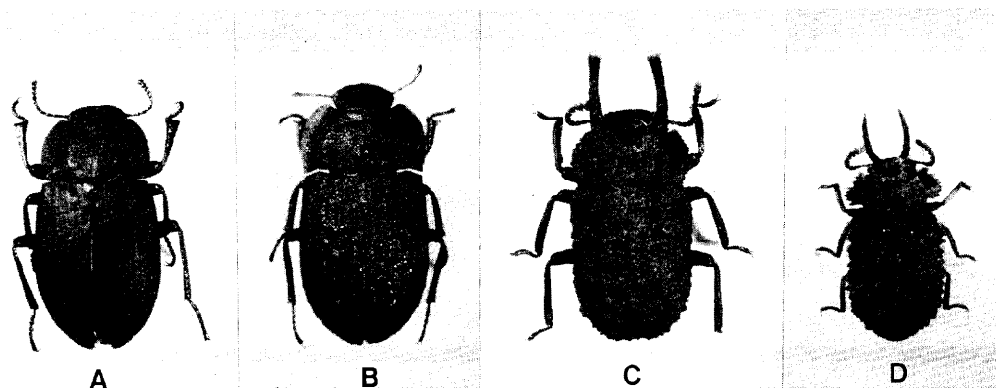


Fig. 1. A: *Gonocephalum persimile* (Lewis); B: *Opatrum subaratum* Faldermann; C: *Boletoxenus bellicosus* (Lewis); D: *Byrsax kimurai* Miyatake.

Spec. exam.: 10 exs., Kwangnung, Pochon Gun, Kyonggi Do, Korea, 14-19. v. 1992, M. T. Chûjô leg.; 44 exs., loc. cit., 16-19. vii. 1992, M. T. Chûjô leg.

Gen. distr.: Korea (incl. Chejudo Island) & Japan (Hokkaido, Honshu, Shikoku, Kyushu, Tsushima Is., Yakushima Is., Nakanoshima Is. & Iriomotejima Is.).

5. *Byrsax kimurai* Miyatake*

Byrsax kimurai Miyatake, 1970, Trans. Shikoku Ent. Soc., 10(3-4):118-120, Figs. 1D & 2D, Pl. 5, Figs. E-H (Japan: Honshu, Shikoku & Tsushima Is.).

Spec. exam.: 1 ex., Samjeong Ri, Macheon Myeon, Hamyang Gun, Gyeongsang-nam Do, Korea, 29. ix. 1991, M. T. Chûjô leg.; 6 exs., Kwangnung, Pochon Gun, Kyonggi Do, Korea, 14-19. v. 1992, M. T. Chûjô leg.; 13 exs., loc. cit., 16-19. v. 1992, M. T. Chûjô leg.

Gen. distr.: Korea & Japan (Honshu, Shikoku & Tsushima Is.).

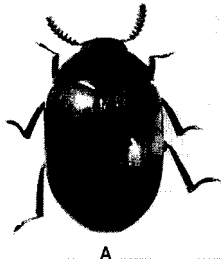


Fig. 2. *Diaperis lewisi lewisi* Bates

DIAPERINI

6. *Diaperis lewisi lewisi* Bates

Diaperis Lewisi Bates, 1873, Ent. Monthl. Mag., 10: 14 (Japan: proper).

Spec. exam.: 13 exs., Tam Ri, Whagae Myeon, Cheon-la-nam Do, Korea, 18. vii. 1991, M. T. Chûjô leg.

Gen. distr.: Korea, Siberia & Japan (Hokkaido, Honshu, Shikoku, Kyushu, Sadogashima Is & Tsushima Is.)

7. *Scaphidema michihidei* sp. nov.

Oval, dorsum gently convex, dark brown to black, with pale amber colored on three basal segments of antennae, mouth parts, from gular to occiput, marginal area of pronotum, elytra and all legs.

Head transverse, sparsely, with very strong punctures, clypeal suture depressed but invisible, clypeus trapezoidally produced forwards. Eyes prominent outwards, minutely faceted. Antennae thick, from 5th to 10th segments nearly equal in shape and size each other, terminal segment ovoid, relative length of each segment (base to apex) 5:5: 5 : 4 : 4 : 4 : 4 : 4 : 6. Pronotum nearly trapezoidal, gently convex, very sparse, with strong punctures, width of base $\frac{5}{3}$ times as broad as that of apex, with side margins reflexed. Prosternal process tongue-shaped, with median part deeply grooved between front coxal cavities. Scutellum also tongue-shaped, very sparsely punctate.

Elytra gently convex, deeply punctate-striate, interstices convex, very sparsely and shallowly punctate; both sides narrowly marginate, the margin not reaching apex, elytral epipleuron very wide at base, strongly narrowed posteriorly to subapical part, and not reaching apical part of elytron. Sternites of thorax shallowly, sparsely and very strongly punctate. Mctepisterna medially grooved. Abdominal sternites evenly and sparsely punctate. All femora depressed, sparsely punctate. Front tibiae weakly dilate apically. Front tarsi with terminal segment nearly as long as the rest put together.

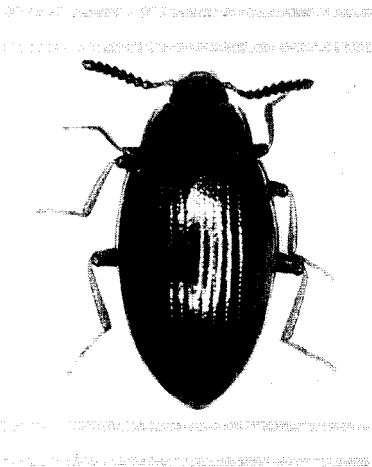


Fig. 3. *Scaphidema michihidei* sp. nov. wide as transversal diameter of eye.

Length: 4.65–4.90mm. Width 2.28–2.45mm.

Holotype, male (preserved in the collection of Prof. C. E. Lee, Kyungpook Natio. Univ.), Jcongleyon Chi, Samnae Myeon, Cheonla-buk Do, Korea, 16. vii. 1991, M. T. Chûjô leg. Paratypes: male and female, same collecting data with holotype; female, Samjeon Ri, Macheon Myeon, Cheonla-buk Do, Korea, 14. vii. 1991, M. T. Chûjô leg.

Distribution: Korea.

This new species is closely related to *Scaphidema nigricorne* Lewis, 1894 from Japan, but is clearly distinguished from the latter by the following characters: general body size much larger, from 1st to 3rd antennal segments, femora, tibiae, marginal area of pronotum and elytra pale amber colored, and width of interocular area 3.6 times as

8. *Platydema fumosum* Lewis*

Platydema fumosum Lewis, 1894, Ann. Mag. Nat. Hist., [6], 13(77): 395–396 (Japan: Honshu),

Spec. exam.: 7 exs., Kwangnung, Pochon Gun, Kyonggi Do, Korea, 16–19. vii. 1992, M. T. Chûjô leg.

Gen. distr.: Korea & Japan (Honshu & Tsushima Is.).

9. *Platydema koreanum* Chûjô, M. T. et C. E. Lee

Platydema koreanum Chûjô, M. T. & C. E. Lee, 1992, Esakia, Kyushu Univ. Publ. Ent., (32): 37–38, Fig. 6 (Korea: incl. Chejudo Island).

Spec. exam.: 3 exs., Jconlyeon Chi, Samnac Myeon, Cheonla-buk Do, Korea, 16. vii. 1991, M. T. Chûjô leg.; 1 ex., Dooryu Don, Joochun Myeon, Samchung Gun, Gyconsang-nam Do, Korea, 25. ix. 1991, M. T. Chûjô leg.; 9 exs., Jeonglyong Chi, Samnac Myeon, Namwcon Gun, Jeongra-buk Do, Korea, 28. ix. 1991, M. T. Chûjô leg.; 10 exs., Samjeong Ri, Macheon Myeon, Hamyang Gun, Gyeongsang-nam Do, Korea, 29. ix. 1991, M. T. Chûjô leg.; 25 exs., Kwangnung, Pochon Gun, Kyonggi Do, Korea, 14–19. v. 1992, M. T. Chûjô leg.; 12 exs., Bougmyeong Ri, Chunchon Gun, Kangweon Do, Korea, 22–23. v. 1992, M. T. Chûjô leg.; 15 exs., Kwangnung, Pochon Gun, Kyonggi Do, Korea, 16–19. vii. 1992, M. T. Chûjô leg.; 10 exs., Bougmyeong Ri, Chunchon Gun, Kangweon Do, Korea, 21. vii. 1992, M. T. Chûjô leg.

Gen. distr.: Korea (incl. Chejudo Island).

10. *Platydema kurama* Nakane*

Platydema kurama Nakane, 1963, Fragm. Col., Tokyo, (6): 26 – (7): 27 (Japan: Honshu & Kyushu).

Spec. exam.: 2 exs., Samjeong Ri, Macheon Myeon, Hamyang Gun, Gyeongsang-nam Do, Korea, 29. ix. 1991, M. T. Chûjô leg.

Gen. distr.: Korea & Japan (Honshu, Shikoku, Kyushu, Tsushima Is., Tanegashima Is. &

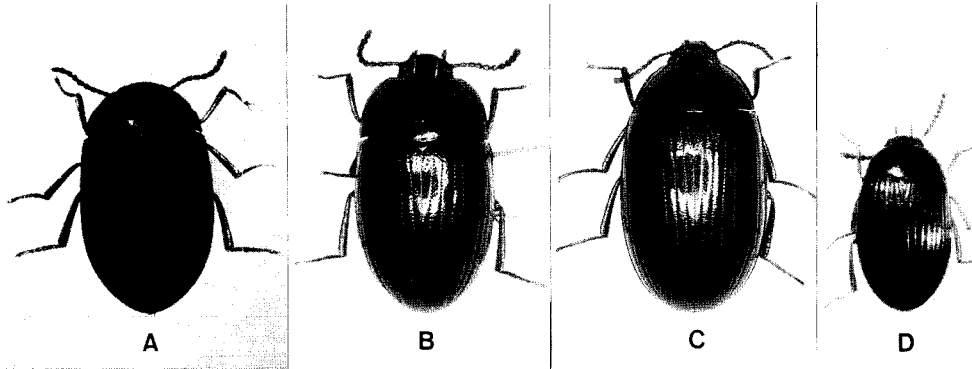


Fig. 4. A: *Platydema fumosum* Lewis; B: *Platydema kurama* Nakane; C: *Platydema lynceum* Lewis; D: *Platydema recticorne* Lewis.

Yakushima Is.).

11. *Platydema lynceum* Lewis*

Platydemalynceum Lewis, 1894, Ann. Mag. Nat. Hist., [6], 13(77): 395 (Japan: Honshu).

Spec. exam.: 1 ex. (at light), Dooryu Don, Joochun Myeon, Samchung Gun, Gyeongsang-nam Do, Korea, 25. ix. 1991, K. Morimoto leg.; 1 ex., Gamjong Ri, Chunchon Gun, Kangweon Do, Korea, 23. vii. 1992, M. T. Chûjô leg.

Gen. distr.: Korea & Japan (Hokkaido, Honshu, Shikoku & Kyushu).

12. *Platydema recticorne* Lewis*

Platydemarecticorne Lewis, 1894, Ann. Mag. Nat. Hist., [6], 13(77): 394-395 (Japan: Honshu).

Spec. exam.: 8 exs., Kwangnung, Pochon Gun, Kyonggi Do, Korea, 14-19. v. 1992, M. T. Chûjô leg.

Gen. distr.: Korea & Japan (Honshu, Shikoku, Kyushu, Tanegashima Is., Yakushima Is., Nakanoshima Is. & Iriomotajima Is.).

13. *Basanus tsushimensis* M. T. Chûjô

Basanus tsushimensis M. T. Chûjô, 1963, Niponius, 2(4): 17-19, 2 figs. (Tsushima Is. & N. Korea).

Spec. exam.: 105 exs., Jeonglyon Chi, Samnae Myeon, Cheonla-buk Do, Korea, 16. vii. 1991, M. T. Chûjô leg.; 12 exs., Dooryu Don, Joochun Myeon, Samchung Gun, Gyeongsang-nam Do, Korea, 25. ix. 1991, M. T. Chûjô leg.; 140 exs., Jeonglyong Chi, Samnae Myeon, Namweon Gun, Jeongra-buk Do, Korea, 28. ix. 1991, M. T. Chûjô leg.; 10 exs., Samjeong Ri, Macheon Myeon, Hamyang Gun, Gyeongsang-nam Do, Korea, 29. ix. 1991, M. T. Chûjô leg.; 188 exs., Kwangnung, Pochon Gun, Kyonggi Do, Korea, 14-19. v. 1992, M. T. Chûjô leg.; 3 exs., Gamjong Ri, Chunchon Gun, Kangweon Do, Korea, 21. v. 1992, M. T. Chûjô leg.; 3 exs., Bougmyeong Ri, Chunchon Gun,

Kangweon Do, Korea, 22-23. v. 1992, M. T. Chûjô leg.; 9 exs., Kwangnung, Pochon Gun, Kyonggi Do, Korea, 16-19. vii. 1992, M. T. Chûjô leg.

Gen. distr.: Korea (incl. Chejudo Island) & Japan (Tsushima Island).

14. *Ceropria laticollis* Fairmaire*

Ceropria laticollis Fairmaire, 1903, Ann. Soc. Ent. Belgique, 47: 13 (India).

Spec. exam.: 1 ex., Kwangnung, Pochon Gun, Kyonggi Do, Korea, 14-19. v. 1992, M. T. Chûjô leg.; 1 ex., loc. cit., 16-19. vii. 1992, M. T. Chûjô leg.

Gen. distr.: Korea, China, Indochina, India & Japan (Honshu, Kyushu, Tsushima Is. & Nakanoshima Is.).

15. *Ceropria striata* Lewis*

Ceropria striata Lewis., 1894, Ann. Mag. Nat. Hist., [6], 13 (77): 399-400 (Japan: Kyushu).

Spec. exam.: 1 ex., Kwangnung, Pochon Gun, Kyonggi Do, Korea, 14-19. v. 1992, M. T. Chûjô leg.; 10 exs., loc. cit., 16-19. vii. 1992, M. T. Chûjô leg.

Gen. distr.: Korea & Japan (Honshu, Kyushu & Tsushima Is.).

ULOMINI

16. *Uloma latimanus* Kolbe

Ulomalatimanus Kolbe, 1886, Arch. Naturg., 52(1): 202, Pl. 11, Fig. 34 (Korea: Soul -Pingan).

Spec. exam.: 1 ex., Jeonglyeon Chi, Samnac Myeon, Cheonla-buk Do, Korea, 16. vii. 1991, M. T. Chûjô leg.; 1 ex., Samjeong Ri, Macheon Myeon, Hamyang Gun, Gyeongsang-nam Do, Korea, 29. ix. 1991, M. T. Chûjô leg.; 25 exs., Kwangnung, Pochon Gun, Kyonggi Do, Korea, 14-19. v. 1992, M. T. Chûjô leg.; 4 exs., Bougmyeong Ri, Chunchon Gun, Kangweon Do, Korea, 22-23. v. 1992, M. T. Chûjô leg.; 49 exs., Kwangnung, Pochon Gun, Kyonggi Do, Korea, 16-19. vii. 1992,

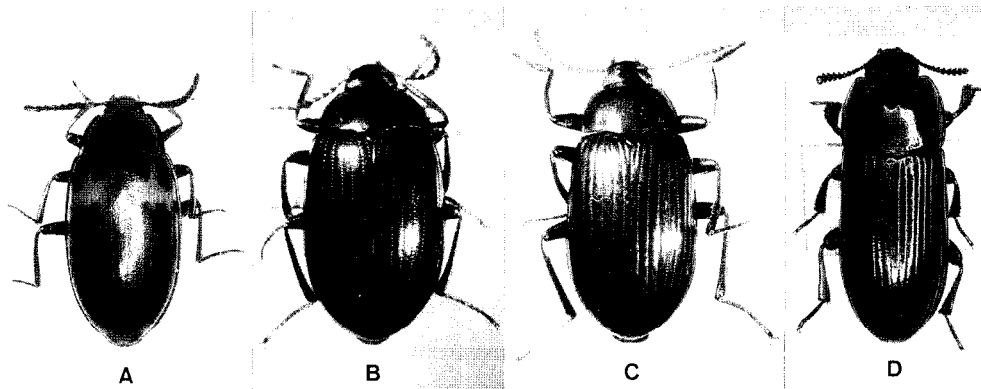


Fig. 5. A: *Basanustsushimensis* M. T. Chûjô; B: *Ceropria laticollis* Fairmaire; C: *Ceropria striata* Lewis; D: *Uloma latimanus* Kolbe.

M. T. Chûjô leg.

Gen. distr.: Korea (incl. Chejudo Island) & Japan (Hokkaido, Honshu, Kyushu, Miyakejima Is., Tsushima Is. & Yakushima Is.).

17. *Uloma marseuli marseuli* Nakane*

Uloma marseuli Nakane, 1956, Sci. Rep. Saikyo Univ., A, 2(3): A 168, Pl. 2, Figs. 28-29 (Japan: Honshu, Shikoku & Kyushu).

Spec. exam.: 1 ex., Jeonglyeon Chi, Samnae Myeon, Cheonla-buk Do, Korea, 16. vii. 1991, M. T. Chûjô leg.; 1 cx. Kwangnung, Pochon Gun, Kyonggi Do, Korea, 19. v. 1992, M. T. Chûjô leg.

Gen. distr.: Korea & Japan (Hokkaido, Honshu, Shikoku, Kyushu, Niijima Is., Tsushima Is., Yakushima Is., Amami-Oshima Is., Okinawa-Honto Is. & Ishigakijima Is.).

18. *Diaclina plagiata* (Marseul)*

Alphitophagus plagiatus Marseul, 1876, Ann. Soc. Ent. France, (5) 6: 108-109 (Japan: Kyushu).

Spec. exam.: 1 cx., Kwangnung, Pochon Gun, Kyonggi Do, Korea, 16-19. vii. 1992, M. T. Chûjô leg.

Gen. distr.: Korea & Japan (Honshu & Kyushu).

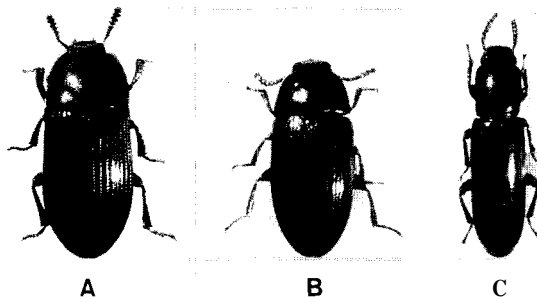


Fig. 6. A: *Uloma marseuli marseuli* Nakane; B: *Diacrina plagiata* (Marseul); C: *Hypophloeus (H.) colydioides* (Lewis)

HYPOPHLOEINI

19. *Hypophloers (Hypophloeus) colydioides* (Lewis)*

Corticeus colydioides Lewis, 1894, Ann. Mag. Nat. Hist., [6], 13(77): 468 (Japan: Honshu).

Spec. exam.: 2 exs., Kwangnung, Pochon Gun, Kyonggi Do, Korea, 14-19. v. 1992, M. T. Chûjô leg.

Gen. distr.: Korea & Japan (Honshu, Shikoku, Miyakejima Is. & Yakushima Is.).

TENEBRIONINI

20. *Encyalesthus violaceipennis* (Marseul)

Upis violaceipennis Marseul, 1876, Ann. Soc. Ent. France, (5) 6: 118-119 (Japan: Kyushu).

Spec. exam.: 1 ex. (light trap), Kwangnung, Pochon Gun, Kyonggi Do, Korea, 16-19. vii. 1992, M. T. Chûjô leg.

Gen. distr.: Korea & Japan (Hokkaido, Honshu, Shikoku, Kyushu & Tsushima Is.).

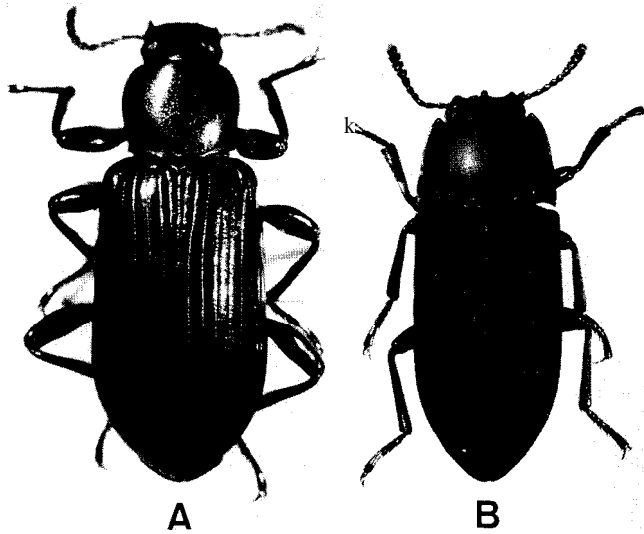


Fig. 7. A: *Encyalesthus violaceipennis*(Marseul); B: *Toxicum tuberculifrons*-Lewis.

21. *Toxicum tuberculifrons* Lewis*

Toxicum tuberculifrons Lewis, 1894, Ann. Mag. Nat. Hist., [6], 13(77): 469 (Japan: Honshu).

Spec. exam.: 7 exs., Kwangnung, Pochon Gun, Kyonggi Do, Korea, 14-19. v. 1992, M. T. Chûjô leg.

Gen. distr.: Korea & Japan (Honshu & Kyushu).



Fig. 8. *Cryphaeus albopilosus* sp. nov.

22. *Cryphaeus albopilosus* sp. nov.

Dark brown, parallel-sided, rather strongly convex, wholly covered with white, fine and long pubescence. Head rather roughly punctate, eyes with erected inner margins, clypeus transverse, subquadrately depressed, genac widened posteriorly, crossed over around eyes with occiput, dividing eyes dorso-ventrally. Eyes large, rather oblique, finely faceted. Antennae moniliformed, from 1st to 8th segments, depressed and clavate from 9th to terminal segments, relative length of each segment (base to apex) 6 : 4 : 6 : 4 : 4 : 4 : 4 : 3 : 8 : 7 : 7. Terminal segment of maxillary palp securiformed. Gula roughly carved, occiput very densely punctate. Pronotum very narrowly and wholly marginate, gently convex, surface uneven, moderately punctate; front margin shallowly sinuate, front corner roundly and weakly produced; side margin very weakly expanded outwards; width of base 6.2/5.0 times as that of apex; hind corner narrowly rounded; hind margin shallowly sinuate. Scutellum

tongue-formed, very densely punctate.

Elytra rather strongly convex, irregularly rugose and punctate, the punctures nearly striate at outer half, invisible at inner half, basal margin roundly produced forwards, sides very narrowly and wholly marginate. Elytral epipleuron narrow, reaching apex. Mesosternum narrowly and visibly ridged at both sides and median part. Metasternum and mesepipleura densely with fine punctures. Visible abdominal sternites punctate, the punctures gradually densened towards apex. Femora weakly depressed, rather sparsely with shallow punctures, tarsi rather slender, gradually thickened towards apex, densely punctate, front tibiae roundly bent downwards, 1st tarsal segment a little shorter than the rest put altogether.

Length: 11.0mm. Width: 3.7mm.

Holotype: female (preserved in the collection of Prof. C. E. Lee, Kyugpook Natio. Univ.), Gamjong Ri, Chunchon Gun, Kangweon Do, Korea, 23. vii. 1992, K. Morimoto leg.

This new species is rather close to *Cryphaeus duellicus* (Lewis, 1894) from Japan, but is easily distinguished from the latter by the following characters: body wholly covered with white and long pubescence, color rather brownish, pronotum uneven on dorsum, and elytrarugose.

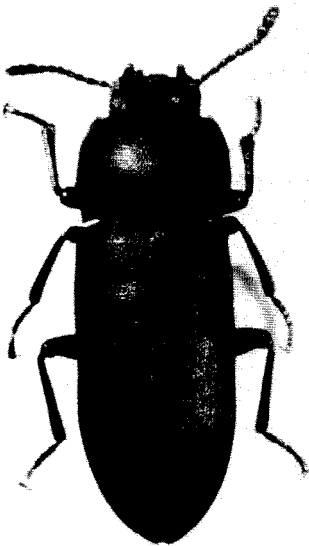


Fig. 9. *Cryphaeus rotundicollis* sp. nov.

23. *Cryphaeus rotundicollis* sp. nov.

Black to dark brown, nearly parallel-sided, gently convex.

Head rather transverse, very densely punctate; clypeus truncate at apex, clypeal suture semicircular, depressed; from gular to occiput very densely, with strong punctures, genae widened backwards, crossed over round eyes and connected with occiput, dividing eyes dorso-ventrally; with feebly incurved, a short horn on inside margin of each cyc; eyes large, oblique, minutely faceted. Antennae with basal 8 segments rather moniliformed, terminal 3 segments strongly depressed and clavate, relative length of each segment (base to apex) 4.0 : 2.0 : 3.0 : 2.5 : 2.5 : 2.5 : 2.5 : 3.0 : 3.0 : 2.5. Terminal segment of maxillary palp weakly securi-formed.

Pronotum roundly convex, densely punctate, front margin very shallowly and wholly sinuate, front corners gently produced, side margins roundly warped outwards in entire length, very narrowly marginate, hind corners sharply pointed, hind margin bisinuate. Prosternum densely with very strong punctures, prosternal process roundly convex at inter coxal area, and then narrowed and depressed posteriorly, apex narrowly rounded. Scutellum nearly triangular, roundly narrowing posteriorly, and pointed at apex.

Elytra parallel-sided, gently convex, very narrowly, wholly marginate, densely with irregular punctures. Mesosternum densely with very large punctures, V-shapedly elevated along mesocoxal cavities, Metasternum very gently convex, rather sparsely with strong punctures. Abdomen with 1st to 3rd sternites with rather sparse largely punctures, finely punctate at apical two segments. Femora rather thick, finely punctate; tibiae nearly straight, gently thickened towards apex, terminal segment of front tarsi as long as the rest put altogether, claws simple.

Length: 9.2mm. Width: 3.1mm.

Holotype: male (at light)(preserved in the collection of Prof. C. E. Lee, Kyungpook Natio. Univ.), Kwangnung, Pochon Gun, Kyonggi Do, Korea, 16-19. vii. 1992, M. T. Chûjô leg.

This new species is related with *Cryphaeus satoi* Kaszab, 1964 from Amami-Oshima, but is separated from the latter by the following characters: gena triangularly produced anteriorly, pronotum with side margins roundly warped outwards, elytra more densely with fine punctures.

MISOLAMPINI

24. *Misolampidius koreanus* Chûjô, M. T. et Imasaka

Misolampidius koreanus Chûjô, M. T. et Imasaka, 1982, Esakia, Kyushu Univ. Publ. Ent., (19): 123-124, Fig. 1 (Korea).

Spec. exam.: 4 exs., Kwangnung, Pochon Gun, Kyonggi Do, Korea, 14-19. v. 1992, M. T. Chûjô leg.; 1 ex., Bougmyeong Ri, Chunchon Gun, Kangweon Do, Korea, 22-23. v. 1992, M. T. Chûjô leg.

Gen. distr.: Korea.

25. *Misolampidius tentyrioides* Solsky

Misolampidius tentyrioides Solsky, 1875, Horae Soc. Ent. Rossicac, 11: 293, Pl. 1, Fig. 11 (E. Siberia).

Spec. exam.: 2 exs., Samjeong Ri, Macheon Myeon, Cheonla-buk Do, Korea, 14. vii. 1991, M. T. Chûjô leg.; 6 exs., loc. cit., 16. vii. 1991, M. T. Chûjô leg.; 13 exs., Dooryu Dong, Joochun Myeon, Samchung Gun, Gyeongsang-nam Do, Korea, 25. ix. 1991, M. T. Chûjô leg.; 34 exs., Jeonglyong Chi, Samnae Myeon, Namweon Gun, Jeongra-buk Do, Korea, 28. ix. 1991, M. T. Chûjô leg.; 16 exs., Samjeong Ri, Macheon Myeon, Hamyang Gun, Gyeongsang-nam Do, Korea, 29. ix. 1991, M. T. Chûjô leg.; 5 exs., Kwangnung, Pochon Gun, Kyonggi Do, Korea, 14-19. v. 1992, M. T. Chûjô leg.; 1 ex., Bougmyeong Ri, Chunchon Gun, Kangweon Do, Korea, 22-23. v. 1992, M. T. Chûjô leg.

Gen. distr.: Korea. N.-E. China & E. Siberia.

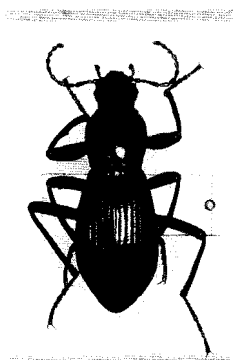


Fig. 10. *Stenophanes mesostena* (Solsky).

26. *Stenophanes mesostena* (Solsky)

Hedyphanes mesostena Solsky, 1871, Horae Soc. Ent. Rossicac, 7: 376-377 (as *Helopini*)(E. Siberia).

Spec. exam.: 6 exs., Jeonglyeon Chi, Samnac Myeon, Cheonla-buk Do, Korea, 16. vii. 1991, M. T. Chûjô leg.; 1 ex., Sanju Beach, Namhae Do Is., Kyongsang-nam Do, Korea, 18. vii. 1991, M. T. Chûjô leg.; 1 ex., Dooryu Dong, Joochun Myeon, Samchung Gun, Gyeongsang-nam Do, Korea, 25. ix. 1991, M. T. Chûjô leg.; 1 ex., Bougmyeong Ri, Chunchon Gun, Kangweon Do, Korea, 22-23. v. 1992, M. T. Chûjô leg.

Gen. distr.: Korea (incl. Chejudo Island) & E. Siberia.

HELOPINI

27. *Tarpela elegantula* (Lewis)

Lamperos elegantulus Lewis, 1894, Ann. Mag. Nat. Hist., [6],13(77): 478 (Japan: Honshu).

Spec. exam.: 1 ex., Samjeong Ri, MacheonMyeon, Cheonla-buk Do, Korea, 14. vii. 1991, M. T. Chûjô leg.

Gen. distr.: Korea & Japan (Honshu, Shikoku & Tsushima Is.).

AMARYGMINI

28. *Plesiophthalmus davidis* Fairmaire

Plesiophthalmus Davidis Fairmaire, 1878, Ann. Soc. Ent. France, (5) 8: 121 (China).

Spec. exam.: 2 exs., Mt. Kongo, Korea, 19. viii. 1940, T. Shirôzu leg.; 1 ex., Kwangnung, Pochon Gun, Kyonggi Do, Korea, 14. vii. 1992, M. T. Chûjô leg.

Gen. distr.: Korea & China.

29. *Plesiophthalmus spectabilis* Harold

Plesiophthalmus spectabilis Harold, 1875, Abh. Ver. Brunn, 4: 293-294 (Japan).

Spec. exam.: 1 ex. (at light), Kwangnung, Pochon Gun, Kyonggi Do, Korea, 16-19. vii. 1992, M. T. Chûjô leg.

Gen. distr.: Korea, N. & C. China, Formosa & Japan (Honshu, Shikoku, Kyushu & Okinawa-Honto Is.).

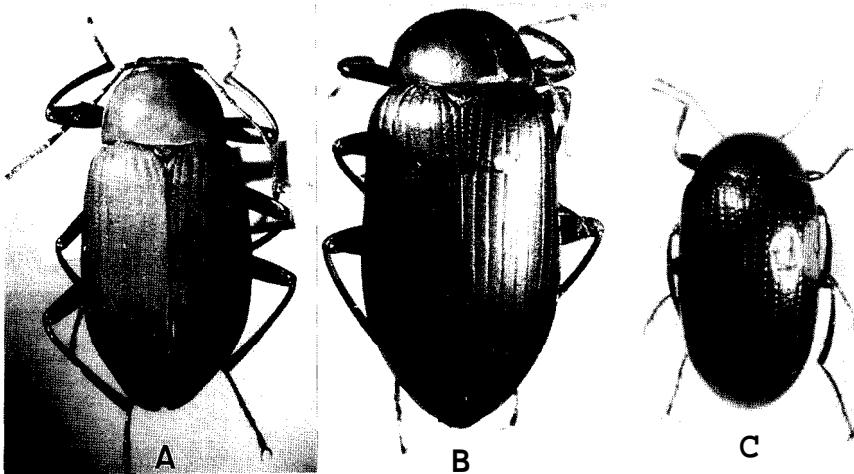


Fig. 11. A: *Plesiophthalmus davidis* Fairmaire; B: *Plesiophthalmus spectabilis* Harold; C: *Elixota curva* (Marseul).

30. *Elixota curva* (Marseul)*

Amarygmus curvus Marseul, 1876, Ann. Soc. Ent. France, (5) 6: 316 (Japan: Kyushu).

Spec. exam.: 2 exs. (at light), Kwangnung, Pochon Gun, Kyonggi Do, Korea, 14-19 v. 1992, M.T. Chūjō leg.

Gen. distr.: Korea, Formosa & Japan (Honshu, Shikoku, Kyushu & Tsushima Is.).

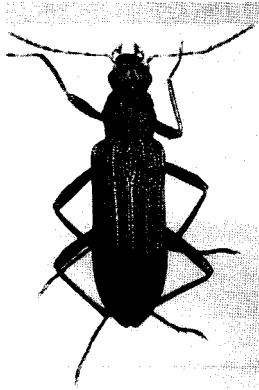


Fig. 12. *Strongylium cultellatum* Maklin.

STRONGYLIINI

31. *Strongylium cultellatum* Maklin

Strongylium cultellatum Maklin, 1864, Monogr. Strongylium: 345(453)(Hongkong).

Spec. exam.: 4 exs., Tam Ri, Whagae Myeon, Cheonlanam Do, Korea, 18. vii. 1991, M. T. Chūjō leg.

Gen. distr.: Korea, Hong Kong, & Japan (Honshu, Tsushima Is., Nakanoshima Is., Takarajima Is., Amami-Oshima Is., Okinawa Honto Is., Ishigakijima Is., Kumejima Is., Iriomotejima Is. & Yonagunijima Is.).

ACKNOWLEDGEMENT

We are very grateful to Director general Jae Myeong Jo of Forest Research Institution, Korea and Director Seung Kul Park of Chung-bu Forest Experiment Station, Korea for their various help to our collecting trip under the Korea-Japan Co-operative Science Program on "The Evolution and Biogeography of the Insects in the East Asia. And also, we express our cordial thanks to Prof. Dr. Chang Young Lee, Kangweon National University, Korea and Dr. Jong Kuk Kim of Forest Research Institution, Korea, for their miscellaneous help through our collecting trip.

We wish to express our appreciation to Prof. Dr. K. Morimoto, Entomological Laboratory of Kyushu University for his continual kind and valuable guidance. And we are thankful to Assoc. Prof. Dr. O. Tadauchi and Assist. Prof. Dr. S. Nomura of Entomological Laboratory of Kyushu University for various cooperation for this work.

REFERENCES

- Cho, P. S., 1957. A systematic catalogue of Korean Coleoptera. *Humanities and Sciences, Korea Univ.*, 2: 173-338.
 ——— 1963. Insects of Quelpart Island (Cheju-do). *Loc. cit.*, 6: 159-242 (in Korean).

- Chûjô, M. T., 1963. A new species of the genus *Basanus* Lacordaire from Japan and Korea (Coleoptera, Tenebrionidae). *Niponius*, **2**(4): 17-19, 2 figs.
- 1963. A new species of *Gonocephalum* Solier from Okinawa and Takara Is. *Kontyu*, **31**(2): 149-153.
- Chûjô, M. T. & S. Imasaka, 1982. Five new species of *Misolampidius* Solsky from Japan and Korea (Coleoptera, Tenebrionidae). *Esakia, Kyushu Univ. Publ. Ent.*, (19): 123-134, Figs. 1-5.
- Chûjô, M. T. et C. E. Lee, 1992. Tenebrionidae from Chejudo Island, Korea (Insecta, Coleoptera). *Esakia, Kyushu Univ. Publ. Ent.*, (32): 31-45, 11 figs.
- Gebien, H., 1925. Die Tenebrioniden (Coleoptera) des indomalayischen Gebietes, unter Berücksichtigung der Benachbarten Faunen, I. *Phil. J. Sci.*, **26**(1): 67-95, Taf. 1.
- 1925. Loc. cit., II. *Ibid.*, **26**(3): 423-445, Taf. 1.
- 1925. Loc. cit., V. *Ibid.*, **27**(2): 257-289, Taf. 1.
- 1925. Loc. cit., VII. *Ibid.*, **27**(4): 539-595, Taf. 1.
- Imasaka, S. et M. T. Chûjô, 1983-1984. On the phylogenetic and evolutionary study of the genus *Misolampidius* Solsky (Coleoptera, Tenebrionidae), (1) - (11). *Gekkan-Mushi*, (1), (148): 9-13, 5 figs.; loc. cit., (2), (149): 17-21, 4 figs.; loc. cit., (3), (150): 23-26, 9 figs.; loc. cit., (4), (151): 19-25, 32 figs.; loc. cit., (5), (152): 17-21, 8 figs.; loc. cit., (6), (153): 23-26, 16 figs.; loc. cit., (7), (155): 21-26, Tabs. 3a-c.; loc. cit., (10), (161): 25-30, 3 figs.; loc. cit., (11), (162): 2-8, 3 figs. (in Japanese).
- Kaszab, Z., 1952. Die indomalaischen und ostasiatischen Arten der Gattung *Gonocephalum* Solier (Coleoptera, Tenebrionidae). *Ent. Arb. Mus. G. Frey*, **3**(2): 1-688, 511 figs.
- 1968. Tenebrionidae und Meloidae (Coleoptera) aus Nord Korea, gesammelt von M. Mroczkowski und A. Riedel im Jahre 1965. *Ann. Zool. Warszawa*, **26**(2): 7-14.
- 1975. Die Arten der Gattung *Scaphidema* Redt. (Coleoptera, Tenebrionidae). *Ann. Hist.-nat. Mus. Natio. Hungarici*, **67**: 127-130.
- 1983. Synonymie indomalaischer und neotropischer Tenebrioniden (Coleoptera, Tenebrionidae). *Acta Zool. Acad. Sci. Hungaricae*, **29**(1-3): 129-138.
- 1988. Katalog und Bestimmungstabelle der Gattung *Promethis* Pascoe, 1869 (Coleoptera, Tenebrionidae). *Acta Zool. Acad. Sci. Hungaricae*, **34**(2-3): Abb. 1-661, Taf. 1-16.
- Kolbe, H. J., 1886. Beiträge zur Kenntnis der Coleopteren-Fauna Koreas. *Arch. Naturg.*, **52**(1): 158-163 & 201-203, Taf. 10, Figs. 1-10a; Taf. 11, Figs. 34.
- Lee, Y.-I et al., 1985. Insect fauna of Mt. Halla (Chejudo). *Rep. Acad. Surv., Hallasan (Mt.) Nat. Pres., Chejudo, Korea* : 1-408.
- Lewis, G., 1894. On the Tenebrionidae of Japan. *Ann. Mag. Nat. Hist.*, [6], **13**(77): 376-484, Pl. 13.
- Maklin, F. W., 1864. Monogr. Strongylium: 345(453).
- Marscul, S.-A., 1876. Coleopteres du Japon recueillis par M. George Lewis. *Ann. Soc. Ent. France*, (6) 5: 93-142 & 315-321.
- Masumoto, K., 1985. The Japanese species of the genus *Gonocephalum* (Coleoptera, Tenebrionidae). *Elytra, Tokyo*, **12**(2): 27-37.
- 1989. *Plesiophthalmus* and its allied genera (Coleoptera, Tenebrionidae, Amargmini). *Jpn. J. Ent.*, **57**(4): 742-767, 50 figs.
- Masumoto, K. et N. Nishikawa, 1986. A revisional study of the species of the genus *Uloma* from

