

## Erotylidae from Chejudo Island

Chujo, Michitaka

Lee, Chang Eon

<https://doi.org/10.5109/2554>

---

出版情報 : ESAKIA. 32, pp.25-30, 1992-03-31. Entomological Laboratory, Faculty of Agriculture, Kyushu University

バージョン :

権利関係 :



## Erotylidae from Chejudo Island <sup>1), 2)</sup>

Michitaka CHŪJŌ

Hikosan Biological Laboratory, Faculty of Agriculture, Kyushu University,  
Hikosan, Fukuoka, 824-07 Japan

and

Chang Eon LEE

Department of Biology, College of Natural Sciences, Kyungpook National University,  
Taegu, 702-701 Korea

**Abstract.** Two erotylid species are newly recorded from this island.

### EROTYLIDAE

#### Dacninae

#### *Episcapha* Lacordaire, 1842

##### 1. *Episcapha* (*Episcapha*) *flavofasciata flavofasciata* (Reitter, 1879)

(Fig. 1)

*Megalodacne flavofasciata* Reitter, Deutsche Ent. Zeitschr., XXIII, 1879, p. 223 (E. Siberia). — Heyden, Cat. Col. Sibiiien, 1880-1881, p. 214 (*Megalodacne*); id., Cat. Col. Sibiiien, Nachtr. II, 1893, p. 55 (ditto).

*Episcapha flavofasciata*: Reitter, Verh. Naturf. Ver. Brünn, XXVI, 1887, p. 5 (*Episcapha*) (Siberia). — Marseul, L'Abeille, XXVI, 1889, p. 150, (160) (ditto). — Khunt, Gen. Ins., Wytsman, fasc. 88, 1909, p. 110 (*Episcapha*, etc.); id., Col. Cat., Junk, pars 34, 1911, p. 76 (ditto). — Jacobson, Zhuki Rossicae, XI, 1915, p. 935. — Heller, Arch. f. Naturg., LXXXIV, A, (8), 1918(1920), p. 75 [*Episcapha* (*Psiloscapa*)]. — Winkler, Cat. Col. Reg. Paiaearcticae, pars 6, 1926, p. 718 (*Episcapha*). — Araki, Trans. Kansai Ent. Soc., Hyogo, Japan, XIV, 1949, p. 5 (ditto)@. Quelpart & Siberia). Chūjō, Fauna Japonica, Ins.-Col.-Erotyl., 1969, p. (96), 107-110 [*Episcapha*

---

1) Results from the Korea-Japan Co-operative Science Program on "The Evolution and Biogeography of the Insects in the East Asia". No. 3.

2) Contribution from the Hikosan Biological Laboratory, Faculty of Agriculture, Kyushu University, Hikosan (Ser. 4, No. 5).

(*Episcapha*) *flavofasciata flavofasciata* (Reitter)]. — Sasaji, *Seibutsu-Kenkyû, Fukui*, Japan, XIII, 1969, p. 14 (*Episcapha*). — Iablokoff-Khnzorian, *Acta Zool. Cracoviensia*, XX, 1975, p. (217), 218 (ditto).

= *hamata* Lewis, *Ann. Mag. Nat. Hist.*, [5], IV, 1879, p. 465 (*Episcapha*, etc.); id., *Cat. Col. Japanese Archipel.*, 1879, p. 30; id., *Ent. Monthl. Mag.*, XX, 1883, p. 140. — Schonfeldt, *Cat. Col. Japan.*, 1887, p. 158. — Lewis, *Ann. Mag. Nat. Hist.*, [5], XX, 1887, p. [55], 60. — Schönfeldt, *Cat. Col. Japan*, Nachtr. II, 1891, p. 271. — Kuhnt, *Gen. Ins.*, Wytsman, fasc. 88, 1909, p. 110; id., *Col. Cat.*, Junk, pars 34, 1911, p. 76. — Jacobson, *Zhuki Rossicae*, XI, 1915, p. 935. — Heller, *Arch. f. Naturg.*, LXXXIV, A, (8), 1918(1920), p. 75 [*Episcapha (Psiloscapa)*]. — Winkler, *Cat. Col. Reg. Palaearcticae*, pars 6, 1926, p. 718 (*Episcapha*, etc.). — Miwa, *Trans. Nat. Hist. Soc. Formosa*, XIX, 1929, p. [127]. — Chûjô, *Fauna Nipponica*, X, fasc. 8, (5), *Ins.-Col.-Erotyl.*, 1936, p. (135), 139-140, [175]. — Mader, *Mitt. Münchner Ent. Ges. (e.V.)*, XXXI, 1941, p. 932 (China: Fukien). — Araki, *Trans. Kansai Ent. Soc.*, Hyogo, Japan, XIV, 1949, p. 5. — Chûjô, *Fauna Japonica*, *Ins.-Col.-Erotyl.*, 1969, p. [108], 110 [= *Episcapha (Episcapha) flavofasciata flavofasciata* (Reitter)]. — Iablokoff-Khnzorian, *Acta Zool. Cracoviensia*, XX, 1975, p. 218 [= *Episcapha flavofasciata* (Reitter)].

**Spec. exam.:** 7 errs., Yongshil, Mt. Hallasan, Chejudo, Korea, 20. v. 1990, M. T. Chûjô leg.; 12 exs., Yongshil, Mt. Hallasan, Chejudo, Korea, 27. vii. 1990, M. T. Chûjô leg.

**Gen. distr.:** Korea (incl. Chejudo Is.), China, E. Siberia & Japan (Hokkaido).

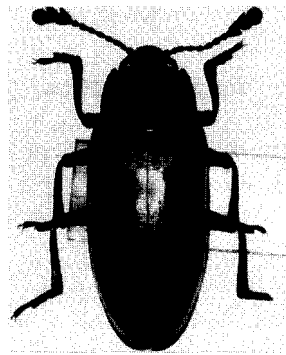


Fig. 1. *Episcapha (E.) flavofasciata flavofasciata* (Reitter).

***Microsternus* Lewis, 1879**

**2. *Microsternus tokioensis* Nakane, 1961\***

(Fig. 2A-G)

*Microsternus tricolor tokioensis* Nakane, *Fragm. Col.*, Tokyo, 1961, pars 1, p. 5; id., *Iconogr. Ins. Japoni-*

\* Asterisks show the species which has hitherto been unrecorded from this island.

corum, II, 1963, p. 206, Pl. 103, fig. 13; — Chûjô, Fauna Japonica, Ins.-Col.-Erotyl., 1969, p. 70, 71.

*Microsternus tokioensis*: Nakane, Rep. Fac. Sci. Kagoshima Univ. (Earth Sci. & Biol.), Japan, (14), 1981, pp. 45-46, f. c.

= *tricolor* Lewis: Nakane, Konchû-Sekai, Gifu, Japan, XLI, (481), 1937, p. 356. — Chûjô, Nippon-no-Konchû, Konchû-Dôkôkai, Ent. Lab. Tokyo Agr. Univ., Japan, III, 1940, p. 83. — Nakane, Shin-Konchû, Tokyo, Japan, XI, 1958, p. 60, f. 10.

Spec. exam.: 6 exs., Orimok, Mt. Hallasan, Chejudo, Korea, 27. vii. 1990, M. T. Chûjô leg.

Gen. distr.: Korea (Chejudo Is.) & Japan (Tokyo & Kyushu).

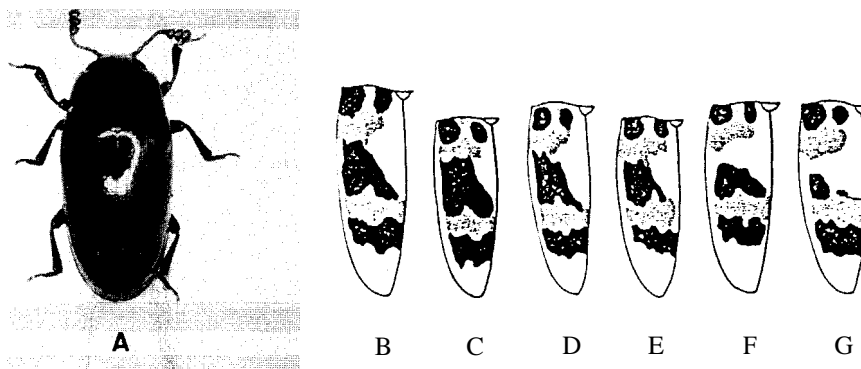


Fig. 2 *Microsternus tokioensis* Nakane. A: Dorsal view. B-G: Individual variation of elytral markings

### Triplacinac

#### *Cyrtotriplax* Crotch, 1873

##### 3. *Cyrtotriplax (Cyrtotriplax) cenchris* Lewis, 1887\*

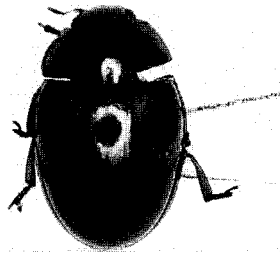
(Fig. 3)

*Cyrtotriplax cenchris* Lewis, Ann. Mag. Nat. Hist., [5], XX, 1887, pp. 64-65 (Japan). — Schönfeldt, Cat. Col. Japan, Nachtr. II, 1891, p. 271 (*Cyrtotriplax*). — Kuhnt, Gen. Ins., Wytzman, fasc. 88, 1909, p. 79 (*Tritoma*; etc.); id., Col. Cat., Junk, pars 34, 1911, p. 56. — Jacobson, Zhuki Rossicae, XI, 1915, p. 933. — Winkler, Cat. Col. Reg. Palaearcticae, pars 6, 1926, p. 715. — Miwa, Trans. Nat. Hist. Soc. Formosa, XIX, 1929, p. [126]. — Chûjô, Fauna Nipponica, X, fasc. 8, (5), Ins.-Col.-Erotyl., 1936, p. (87), 107-108, [171], f. 63. — Naruse, Insect Magazine, Tokyo, (41), 1958, p. 5; id., Hiiakura, Mie-KonchQ-Danwakai, Tsu, Japan, II, (22), 1958, p. 113. — Nakane, Shin-Konchû, Tokyo, Japan, XI, (7), 1958, p. (62), f. 24; id. op. cit., XI, (10), 1958, p. 58; id., Sci. Rep. Kyoto Pref. Univ., Japan, III, (1), 1959, p. 71. — Tam. et al., Akitu, Kyoto Ent. Soc., Japan, VIII, (4), 1959, p. 1. — Ohmachi et al., Bull. Mie Univ. Forests, Tsy Japan, (4), 1960, p. 25. — M. T. Chûjô, Miiado, Miscell. Ent. Japan, I, 1961, pp. 9-10, f. 1. — Nakane, Iconogr. Ins. Japonico-rum, Tokyo, II, 1963, p. 205, t. 103-f.6 (nota). — Yamashita et al., Research Data, Mie Univ.

Forests, Tsu, Japan, (1), 1968, p. 67. — Sasaji, The Life Study, Fukui, Japan, XIII, (1/2), 1969, p. 14. — Chūjō, Fauna Japonica, *Ins.-Col.-Erotyl.*, 1969, p. (227), 241-242, t.16-f.3 (*Cyrtotriplax* s. str.). — Okadome, *Ins.-Fauna of Is. Yakushima*, Publ. Yaku-chō Board of Education, Kagoshima Pref., Japan, 1973, p. 129 (ditto). — Iablokoff-Khnzorian, *Acta Zool. Cracoviensia*, XX, 1975, p. (238), 242, t.18-f.5 (*Tritoma cenchrus*). — Sasaji, Tsushima-no-Seibutsu, Nagasaki-ken Biol. Soc., Japan, 1976, p. 668 (*Cyrtotriplax* s. str.). — Kido, *Kita-Kyushu-no-Konchū*, Kokura, Japan, XXIV, (2), 1977, p. 55 (*Tritoma cenchrus*, etc.); id., op. cit., XXVI, (1), 1979, p. 27 & 29. — Takakura et Kido, *Kita-Kyushu-no-Konchū*, Kokura, Japan, XXVII, (2), 1980, p. 55. — Nakane, Satsuma, *Kagoshima-Konchū-Dōkōkai*, Japan, XXXI, (88), 1982, p. 115; id., *Conserv. Rep. of Is. Yakushima Wild Area*, Kyushu, Japan, (Natural Conserv. Bureau, Environm. Agency of Japan), 1984, p. 615. — Kido, *Kita-Kyushu-no-Konchū*, Kokura, Japan, XXXI, (2), 1984, p. 110. — Narukawa, Hirakura, *Mie-Konchū-Danwakai, Tsu*, Japan, XXXI, (4), 1987, p. 58. — Narukawa et Ootobe, Hirakura, *Mie-Konchū-Danwakai, Tsu*, Japan, XXXI, (6), 1987, p. 92. — Yamawaki, *Kita-Kyushu-no-Konchū*, Kokura, Japan, XXXVI, (2), 1989, p. 139 (*Tritoma cenchrus*). — Takakura, *Col. Fauna of Fukuoka Pref.*, Japan, 1989, p. 477 (ditto).

**Spec. exam.:** 1 ex., Yongshil, Mt. Hallasan, Chejudo, Korea, 24. vii. 1990, M. T. Chūjō leg.

**Gen. distr.:** Korea (Chejudo Island) & Japan (Honshu, Kyushu, Yakushima Is. & Tsushima Is.).



Fii 3. *Cyrtotriplax* (C.) *cenchrus* Lewis.

#### Acknowledgements

We are very grateful to Director Culator Dr. Yoon Kee Kim, Senior Researcher Dr. Seong Jin Kang and Researcher Dr. Sei Ho Jung of Cheju-do Folklore and Natural History Museum, for their kind help on our collecting trip in Chejudo Island. We wish to express our appreciation to Prof. Dr. K. Morimoto, Entomological Laboratory of Kyushu University for his continual kind and valuable guidance. Our cordial thanks are due to Prof. Emeritus Dr. M. Chūjō of Kagawa University for his valuable advice. And also we are thankful to Assoc. Prof. Dr. O. Tadauchi and Assist. Prof. Dr. S. Nomura of Ent. Lab. of Kyushu Univ. for various cooperations for this work.

#### References

- Araki, H., 1949, A list of the genus *Episcapha*, with descriptions of two new subspecies (Col. Erotylidae). *Trans. Kansai Ent. Soc., Japan*, 14 (2): 4-6, Figs. 1-2.
- 1950, A revision of the genus *Episcapha* Lacordaire (Coleoptera, Erotyhidae). *Bull. Takarazuka Insectarium*, (65): 1-6, Figs. 1-5.
- Cho, P. S., 1963. Insects of Querpant Island (Cheju-do). *Hum.Sci. Korea Univ*, 6: 159-242.
- Chûjô, M., 1936. Fauna Nipponica, X, fasc. 8, (5), Ins. -Col. -Erotyl., 193pp., Sanseido Co. Ltd., Tokyo, Japan.
- 1969. Fauna Japonica, Ins. -Col. -Erotyl., 316pp., Academic Press of Japan, Tokyo.
- Chûjô, M. & M. T. Chûjô, 1988. A catalog of the Erotylidae (Insecta, Coleoptera) from the Old World (excl. the Ethiopian Region). *Esakia*, (26): 139-185.
- 1990. A catalog of the Erotylidae (Insecta, Coleoptera) from the Old World (excl. the Ethiopian Region) III. *Esakia*, (29): 1-67.
- Lee, Y. -I st al., 1985, Insect fauna of Mt. Halla. *Rep. Acad. Surv., Hallasan (Mt.) Nat. Pres., Chejudo, Korea*: 404.
- Lewis, G., 1879. On certain new species of Coleoptera from Japan. *Ann. Mag. Nat. Hist.*, [5], 4(24): 459-467.
- Nakane, T., 1937. Notes on the distribution of two species of the beetles from Japan. *Konchû-sekai*, 41 (481): 356.
- 1961. New or little known Coleoptera from Japan and its adjacent regions, XV. *Fragm. Col., Tokyo, Japan*, (1): 1-6, 2 figs.
- 1981. New or little known Coleoptera from Japan and its adjacent regions, XXXIV. *Rep. Fac. Sci., Kagoshima Univ. (Earth Sci. & Biol.)*, (14): 43-53, 9 figs.
- Okamoto, H., 1924. The insect fauna of Querpant Island (Saishiu-to). *Bull. Agr. Exper. Stat. Gov. -Gener., Chosen*, 1(2): 159.
- Reitter, E., 1879. Verzeichniss der von H. Christoph in Ost-Sibiiien gesammelten Clavicornien etc. *Deutsche Ent. Zeitschr.*, 23(2): 209-226.
- 1887 (1888). Bestimmungs-Tabellen der europäischen Coleopteren, 16: Enthaltend die Familien Erotylidae und Cryptophagidae. *Verh. Naturf. Ver. Brünn*, 16: 3-56.
- Sasaji, H., 1985. In *Coleoptera of Japan in Color*, Hoikusha Co Ltd., Osaka, Japan, Vol. III, pp. 224, 226, 228 & 229, pl. 36, Fig. 29, Pl. 37, Figs 7 & 13.

Distribution of Chejudoen Erotylidae								
localities species	Chejudo Island	Mainland of Korea	Japan					Siberia
			Hokkaido	Honshu	Shikoku	Kyushu	Tsushima Is.	
<i>Episcapha</i> (E.) <i>flavofasciata</i> <i>flavofasciata</i>	X	X	X					X
<i>Micropedinus</i> <i>tokioensis</i>	X			X		X		
<i>Cyrtotriplax</i> (C. j) <i>cenchris</i>	X			X	X	x	x	x