

## A NEW SPECIES OF (HYMENOPTERA, THE GENUS NEOSTROMBOCEROS ROHWER TENTHREDINIDAE) FROM NEW BRITAIN, PAPUA NEW GUINEA

Togashi, Ichiji

<https://doi.org/10.5109/2488>

---

出版情報 : ESAKIA. 24, pp.59-61, 1986-01-31. Entomological Laboratory, Faculty of Agriculture,  
Kyushu University  
バージョン :  
権利関係 :

A NEW SPECIES OF THE GENUS *NEOSTROMBOCEROS* ROHWER  
(HYMENOPTERA, TENTHREDINIDAE) FROM NEW BRITAIN,  
PAPUA NEW GUINEA\*

ICHIJI TOGASHI

Ishikawa Agricultural College, 1-308, Suematsu,  
Nonoichi-machi, Ishikawa Prefecture 921, Japan

**Abstract**

Adults of two species belonging to the genus *Neostromboceros* Rohwer from New Britain, Papua New Guinea are keyed and recorded : *Neostromboceros peterseni* Togashi and *N. hirashimai* sp. nov.

Recently, I had the good opportunity to examine specimens belonging to the genus *Neostromboceros* Rohwer collected on New Britain by Dr. H. Kurahashi in 1985, who was a member of the Kyushu University Expedition to Papua New Guinea. From New Britain, one species, *N. peterseni* Togashi, 1981, was previously described.

Specimens examined differed from *N. peterseni* by having yellow maculation on the thorax and by other characters. Therefore, I concluded that they represent a new species. In this paper, I describe the new species and give a key to the species of *Neostromboceros* occurring on New Britain.

KEY TO THE SPECIES OF *Neostromboceros* OF NEW BRITAIN

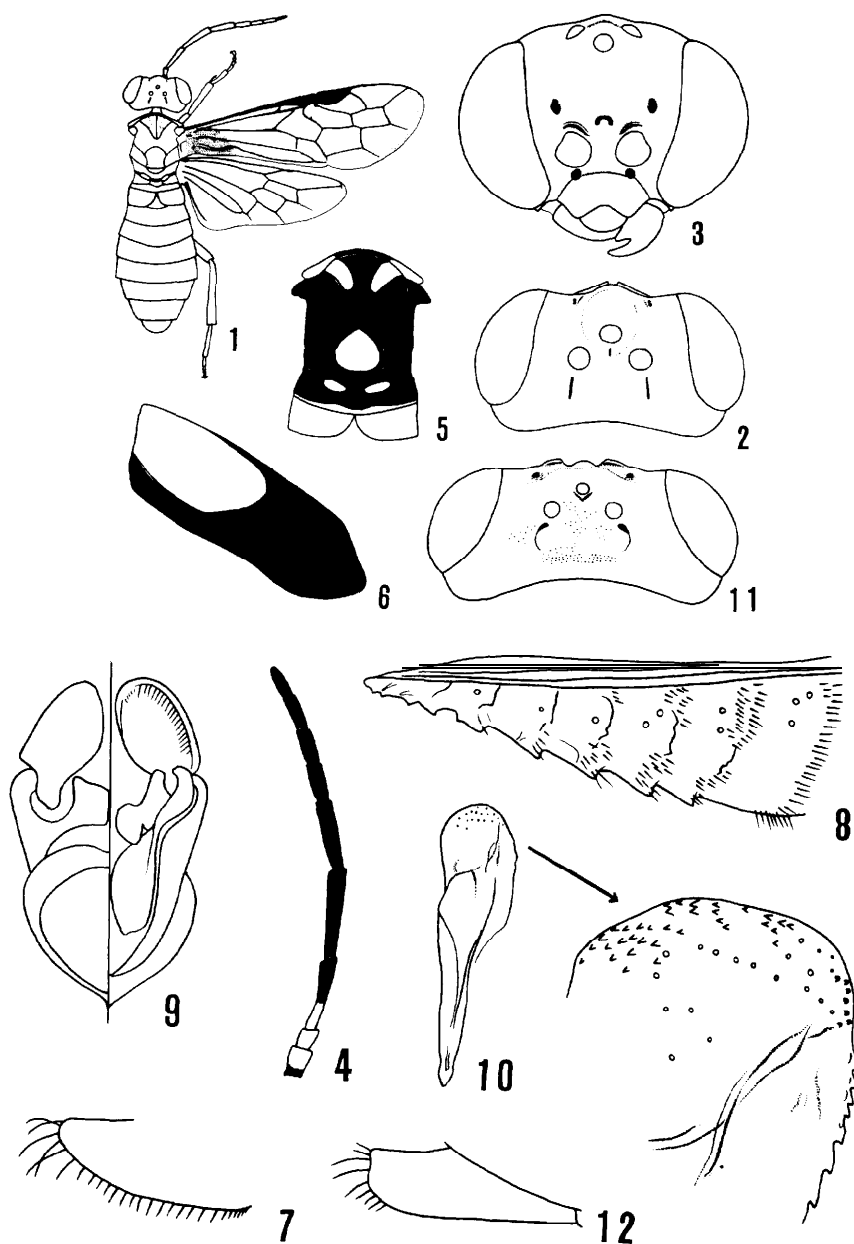
1. Head and thorax entirely black ; apical four segments of antenna pale white ; legs dark brown to black except for apical portion of all femora and basal portion of hind femur ..... *peterseni* Togashi, 1981
- Clypeus, labrum, second segment of maxillary palpus, lateral sides of pronotum, parapteron, two maculae on praescutum, mesoscutellum, and large macula on mesopleuron yellow ; apical four segments of antenna black ; legs yellow or fulvous ..... *hirashimai* Togashi, sp. nov.

*Neostromboceros hirashimai*, new species (Figs. 1-10)

**Female.** Length 8 mm. Head and thorax except for metapostnotum black, with following parts yellow : clypeus, labrum, 2nd segment of maxillary palpus, lateral sides of pronotum, parapteron, two small maculae on praescutum (Fig. 5), mesoscutellum, and large macula on mesopleuron. Metapostnotum fulvous. Abdomen fulvous. Antenna black, but scape except for basal 1/3, pedicel, and basal

---

\* Supported by Grants-in-Aid for Overseas Scientific Survey from the Japan Ministry of Education, Science and Culture, No. 59041048 and No. 60043050 to Kyushu University (Prof. Y. Hirashima).



Figs. 1-10. *Neostromboceros hirashimai* Togashi, new species. 1, dorsal view. 2, head, dorsal view. 3, do., front view. 4, antenna, lateral view. 5, thorax, dorsal view. 6, mesopleuron, lateral view. 7, sawsheath, lateral view. 8, lancet. 9, male genitalia, dorsal aspect on right half, ventral aspect on left half. 10, penis valve. Figs. 11-12. *Neostromboceros peterseni* Togashi. 11, head, dorsal view. 12, sawsheath, lateral view.

half of 3rd segment yellow (Fig. 4). Wings hyaline, but basal 1/3 and apical portion of forewing slightly infusate (Fig. 1) ; veins and stigma dark brown to black. Anterior four legs yellow, with following parts black : coxae, trochanters, basal 1/3 of femora, and apical three segments of tarsi. Hind legs fulvous, but coxa and trochanter black ; tarsus dark brown.

Head : postocellar area slightly raised ; postocellar furrow wanting ; interocellar furrow short and shallow ; lateral furrows deep and nearly straight (Fig. 2) ; OOL : POL : OCL = 0.9 : 1.0 : 1.4 ; frontal area slightly depressed ; median fovea distinct (Fig. 3) ; lateral foveae deep, with conical projection in the middle ; frontal crest distinct ; supraclypeal area slightly elevated ; frontal margin of clypeus rather roundly emarginate. Antenna as long as or slightly shorter than costa plus stigma of forewing ; relative lengths of segments about 1.6 : 1.0 : 4.6 : 5.2 : 3.8 : 2.2 : 2.0 : 2.0 : 1.8.

Thorax : mesoscutellum slightly raised ; mesopleuron with prepectus. Wing venation as in Fig. 1.

Abdomen : sawsheath as in Fig. 7 ; lancet as in Fig. 8.

Punctuation : Head and thorax covered with fine setigerous punctures, shining ; posttergite and metapostnotum nearly impunctate, shining ; propodeum and tergites 2-3 except for lateral sides nearly impunctate, shining ; lateral sides of tergites 1-3 and tergites 4-9 covered with fine setigerous punctures.

Male. Length 7 mm. Similar to female in coloration and structure except for sexual segments. Male genitalia as in Fig. 9 ; penis valve as in Fig. 10.

DISTRIBUTION. Papua New Guinea (New Britain Is.).

TYPE MATERIAL. Holotype : female (Type No. 2507, Kyushu Univ.), 10-13. II. 1985, Buluma, New Britain Is., Papua New Guinea, H. Kurahashi leg. Preserved in the Entomological Laboratory of Kyushu University, Fukuoka, Japan. Paratypes : 3 females and 2 males, same data as holotype. Paratypes will be deposited in the Central Insect Collection, Department of Primary Industry, Konedobu, Papua New Guinea, British Museum (Nat. Hist.), London, U. S. National Museum, Washington, D. C. and Ishikawa Agricultural College, Ishikawa Pref., Japan.

REMARKS. Judging from the literature, this new species closely resembles *N. salomonis* Forsius, 1927, from the Solomon Is., but the former is distinguished from the latter by the coloration of the antenna (in *salomonis*, the antenna is coal-black), the metapostnotum (in *salomonis*, the metapostnotum is black), and the propodeum (in *salomonis*, the propodeum is black). From *N. peterseni* Togashi, 1981, from New Britain Is., the new species is easily separable by the form of the lateral furrows (in *peterseni*, the lateral furrows are distinctly curved, see Fig. 11), by the form of the sawsheath (see Figs. 7 and 12), and by the coloration as given in the key.

### Acknowledgements

I express my hearty thanks to Dr. H. Kurahashi and Prof. Y. Hirashima for the valuable material and to Dr. David R. Smith, U. S. Department of Agriculture, Washington, D. C., for his kind guidance and review of manuscript.

### Literature

Togashi, I., 1981. Some sawflies (Hymenoptera, Pergidae and Tenthredinidae) from New Britain, Papua New Guinea, and Palawan Is., Philippines. *Kontyû, Tokyo*, 49 : 414-421.