

A LIST OF THE CHRYSOMELID SPECIMENS FROM THE
HIMALAYAS AND KASHMIR, PRESERVED IN THE
ZOOLOGICAL MUSEUM, BERLIN

Kimoto, Shinsaku

<https://doi.org/10.5109/2356>

出版情報 : ESAKIA. 6, pp.65-75, 1967-10-10. Hikosan biological laboratory, Faculty of
Agriculture, Kyushu University

バージョン :

権利関係 :

A LIST OF THE CHRYSOMELID SPECIMENS FROM
THE HIMALAYAS AND KASHMIR, PRESERVED
IN THE ZOOLOGICAL MUSEUM, BERLIN*

By

Shinsaku KIMOTO

This paper is a result of my study on the Chrysomelid specimens from the Himalayas and Kashmir, preserved in the Zoological Museum, Berlin. Most part of the material treated here was probably made by G. Hauser.

In the course of this study, I am indebted to Prof. K. Yasumatsu, Kyushu University, Dr. K. Delkeskamp, Berlin, Dr. F. Hieke, Zoological Museum, Berlin and Dr. J. L. Gressitt, Bishop Museum, Honolulu, for their kind cooperation and encouragement.

Subfamily **Megalopodinae**

Temnaspis nigroplagiata Jacoby

Simla, Himalayas (1 ex.).

Temnaspis speciosa Baly

Darjeeling, Himalayas (2 exs., Juni, Fruhstorfer). Tumlong, Sikkim (1 ex., F. Schneider). "Sikkim" (2 exs.). "Nepal" (1 ex.).

Subfamily **Criocerinae**

Lema nigricollis Jacoby

Sikkim, Himalayas (4 exs.). Darjeeling, Himalayas (3 exs.).

Lema coromandeliana (Fabricius)

Sikkim, Himalayas (1 ex.).

Lema cyanea Fabricius

Sikkim, Himalayas (3 exs.). Darjeeling, Himalayas (1 ex.).

* Contribution Ser. 2, No. 40. Hikosan Biological Laboratory, Faculty of Agriculture, Kyushu University, Hikosan.

Lema rufotestacea Clark

Sikkim, Himalayas (5 exs.).

Lema palpalis Lacordaire

Sikkim, Himalayas (1 ex.).

Liliocerus impressa (Fabricius)

Darjeeling, Himalayas (5 exs.). Sikkim, Himalayas (2 exs.).

Liliocerus semipunctata (Fabricius)

Sikkim, Himalayas (2 exs.).

Subfamily **Clytrinae****Miochira montana** (Jacoby)

Simla, Himalayas (7 exs.). Poo, Kashmir (5 exs.). Kyelang, Himalayas (1 ex.).

Miochira pectoralis (Lefèvre), New **Combination**

Poo, Kashmir (1 ex.).

This species was described under the genus *Aetheomorpha* but should be transferred to this genus. The type of this species is preserved in the Mus. Nat. d'Hist. Nat., Paris.

Clytra succincta Lacordaire

Kyelang, Himalayas (2 exs.).

Smaragdina sikhima (Jacoby)

Sikkim, Himalayas (1 ex.).

Diapromorpha pallens (Fabricius)

Sikkim, Himalayas (4 exs.).

Diapromorpha dejeani Lacordaire

Sikkim, Himalayas (10 exs.).

Epimela viridicollis (Jacoby)

Simla, Himalayas (6 exs.).

Aspidolopha spilota (Hope)

Sikkim, Himalayas (6 exs.).

Aspidolopha disincta Duvivier

Sikkim, Himalayas (1 ex.).

Subfamily **Cryptocephalinae****Cryptocephalus dimidiatipennis** Jacoby

Sikkim, Himalayas (3 exs.).

Cryptocephalus exsulans Suffrian

Sikkim, Himalayas (9 exs.).

Cryptocephalus triangularis Hope

Manali Kulu, Kashmir (4 exs.). Simla, Himalayas (8 exs.).

Cryptocephalus notogrammus Suffrian

Simla, Himalayas (3 exs.).

Cryptocephalus octomaculatus Rossi

Simla, Himalayas (7 exs.).

Subfamily **Eumolpinae****Chrysonopa rotundicollis** (Jacoby)

Sikkim, Himalayas (2 exs.).

Bromioides indicus Jacoby

Simla, Himalayas (10 exs.). Darjeeling, Himalayas (3 exs.).

Aloria caerulea (Jacoby)

Darjeeling, Himalayas (1 ex.).

Aoria nigripes (Baly)

Sikkim, Himalayas (1 ex.).

Colasposoma pretiosum Baly

Sikkim, Himalayas (6 exs.). Darjeeling, Himalayas (1 ex.).

Colasposoma semicostatum Jacoby

Sikkim, Himalayas (17 exs.). Darjeeling, Himalayas (2 exs.).

Colasposoma downesi Baly

Sikkim, Himalayas (27 exs.). Simla, Himalayas (1 ex.).

Colasposoma auripenne (Motschulsky)

Sikkim, Himalayas (2 exs.).

Eubrachs discoidalis (Jacoby)

Simla, Himalayas (7 exs.).

Eubrachis indica Baly

Simla, Himalayas (12 exs.).

Trichochrysea vestita (Baly)

Sikkim, Himalayas (10 exs.).

Trichochrysea hirta (Fabricius)

Sikkim, Himalayas (1 ex.).

Colaspoides bengalensis Duvivier

Sikkim, Himalayas (6 exs.). Darjeeling, Himalayas (2 exs.).

Trichotheca hirta Baly

Sikkim, Himalayas (1 ex.).

Trichotheca variabilis Gressitt & Kimoto

Sikkim, Himalayas (1 ex.).

Trichotheca beesoni Bryant

Simla, Himalayas (1 ex.).

Platycorynus pyrophorus (Parry)

Sikkim, Himalayas (4 exs.). Darjeeling, Himalayas (1 ex.).

Platycorynus peregrinus (Herbst)

Sikkim, Himalayas (1 ex.).

Platycorynua impressicollis (Jacoby)

Darjeeling, Himalayas (3 exs.).

Platycorynus lateralis (Hope)

Sikkim, Himalayas (2 exs.).

Platycorynus mouhoti Baly

Sikkim, Himalayas (1 ex.).

Rhyparida immaculata Jacoby

Sikkim, Himalayas (2 exs.).

Cleorina lefevrei Jacoby

Sikkim, Himalayas (9 exs.). Darjeeling, Himalayas (1 ex.).

Cleorina jacobyi Duvivier

Sikkim, Himalayas (4 exs.).

Basilepta plagiosum (Baly)

Sikkim, Himalayas (13 exs.). Simla, Himalayas (4 exs.).

Basilepta femoratum (Jacoby)

Sikkim, Himalayas (3 exs.). Darjeeling, Himalayas (1 ex.).

Basilepta viridipenne (Motschulsky)

Sikkim, Himalayas (5 exs.).

Basilepta variabile (Duvivier)

Sikkim, Himalayas (2 exs.). Simla, Himalayas (1 ex.).

Basilepta subcostatum (Jacoby)

Sikkim, Himalayas (4 exs.).

Subfamily **Chrysomelinae**

Agasta formosa Hope

Darjeeling, Himalayas (2 exs.). Sikkim, Himalayas (7 exs.). Kyelang, Himalayas (1 ex.).

Chrysomela populi Linnaeus

Simla, Himalayas (8 exs.).

Plagiodera rufescens (Gyllenhal)

Sikkim, Himalayas (1 ex.).

Humba cyanicollis (Hope)

Darjeeling, Himalayas (2 exs.). Sikkim, Himalayas (1 ex.).

Agrosteomela fallaciosa (Stål)

Sikkim, Himalayas (1 ex.).

Agrosteomela indica (Hope)

Sikkim, Himalayas (2 exs.). Darjeeling, Himalayas (1 ex.). Simla, Himalayas (1 ex.).

Phratora abdominalis Baly

Simla, Himalayas (1 ex.).

Potaninia assamensis (Baly)

Sikkim, Himalayas (1 ex.).

Chrysolina vishnu (Hope)

Sikkim, Himalayas (5 exs.). Darjeeling, Himalayas (3 exs.).

Chrysolina caelestina (Baly)

Simla, Himalayas (7 exs.). Darjeeling, Himalayas (2 exs.).

Chrysolina aurata (Suffrian)

Sikkim, Himalayas (5 exs.).

Chrysolina haemoptera (Linnaeus)

Simla, Himalayas (1 ex.).

Chrysolina banksi (Fabricius)

Sikkim, Himalayas (1 ex.).

Oreina cacaliae (Schrank)

Sikkim, India or. (4 exs.).

Subfamily Galerucinae

Galeruca indica Baly

Simla, Himalayas (7 exs.).

Aulacophora aimora Maulik

Sikkim, Himalayas (1 ex.).

Aulacophora lewisii Baly

Sikkim, Himalayas (2 exs.).

Paridea (Paridea) foveipennis Jacoby

Sikkim, Himalayas (1 ex.).

Paridea (Paridea) peroplexa (Baly)

Sikkim, Himalayas (2 exs.). Simla, Himalayas (1 ex.).

Paridea (Paridea) octomaculata (Baly),

Simla, Himalayas (4 exs.).

Paridea (Paridea) eberti Kimoto (in press)

Paratypes : Simla, Himalayas (1 ex.). "Himalaya" (1 ex., Hoffmeier).

Dercetina flavocincta (Hope)

Simla, Himalayas (3 exs.). Sikkim, Himalayas (4 exs.).

Dercetina shona (Maulik)

Sikkim, Himalayas (4 exs.).

In the typical form, the coloration of elytra is red brown to pale brown. One specimen before me is characteristic in having the elytra red brown with basal and median bands blackish. However, this specimen does not differ from the typical form, except the elytral coloration. This should be considered as one of the infraspecific variation of *shona* Maulik.

Dercetina indica (Duvivier)

Sikkim, Himalayas (1 ex.).

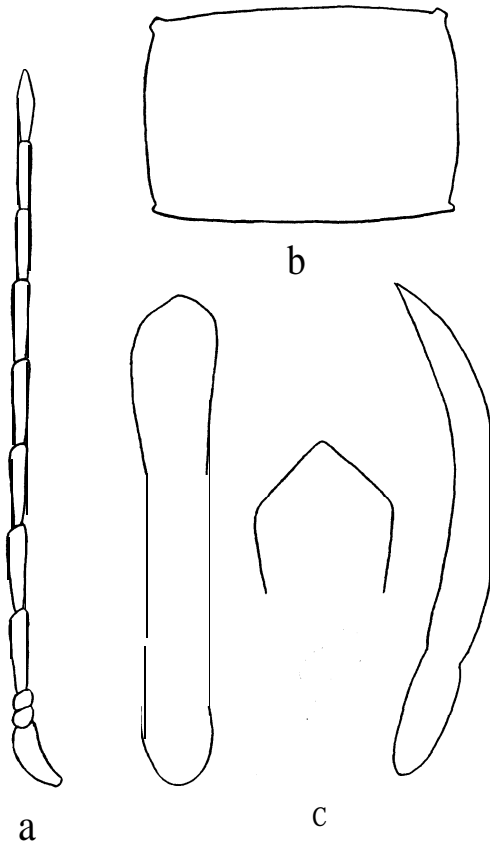


Fig. 1. *Arthrotus hauseri* Kimoto, n. sp. a, Antennae of male, b, Prothorax, c, Male genitalia.

Arthrotus hauseri n. sp. Fig. 1.

Bluish black with slight greenish luster in most cases, antennae blackish brown and two basal joints with slight bluish luster, legs bluish black.

♂: Vertex smooth, shining, impunctate, with a deep depression on middle of anterior border, frontal tubercles raised, not contiguous but separated to each other by a fovea, hardly separated from vertex. Antennae slender, nearly as long as body length, first joint somewhat club-shaped, large, second small, third smallest, slightly shorter than second, fourth longest, nearly twice as long as second and third combined, fifth subequal to fourth in length and shape, sixth very slightly shorter than fifth, sixth to eighth subequal to each other in length and shape, ninth nearly $\frac{4}{5}$ as long as eighth, ninth to tenth subequal to each other in length and shape, eleventh very slightly longer than tenth and its apex pointed. Pronotum transverse, subquadrate, nearly $1\frac{1}{2}$ times as wide as long, anterior and posterior margins almost straight, and lateral margin very slightly rounded, surface convex side to side, without any distinct depression, closely and distinctly punctate on lateral area and sparsely so on median area, and its interstices impressed with minute punctures. Elytra much wider than prothorax at base, subparallel-sided, rounded at apex, surface very closely and strongly punctate and its interstices closely impressed with minute punctures.

♀: Third antennal joint slightly longer than second, and fourth nearly $1\frac{3}{4}$ times as long as second and third combined.

Length 4.5-4.8 mm.

Holotype: Sikkim, Himalayas (Zoological Museum, Berlin).

Paratypes: 6 exs., same as the holotype.

This new species is somewhat resembling *A. coelurea* (Chen) in general feature, but separable in having the posterior margin of prothorax nearly straight, disc of pronotum distinctly punctate and ventral surface entirely bluish.

Cneorane rugulipennis Baly

Simla, Himalayas (2 exs.). "Himalaya" (1 ex.).

Aplosonyx scutellatus (Baly)

Darjeeling, Himalayas (1 ex.). Simla, Himalayas (1 ex.).

Gallerucida longicornis (Baly)

Sikkim, Himalayas (1 ex.).

Erganoides punctulatus (Weise)

Simla, Himalayas (5 exs.).

Monolepta signatum (Olivier)

Sikkim, Himalayas (2 exs.).

Monolepta simlense n. sp. Fig. 2.

Reddish brown, metathorax blackish, antennae blackish brown with two or three basal joints brownish.

Vertex smooth, shining, very sparsely impressed with minute punctures, frontal tubercles raised, well separated from behind. Antennae slender, nearly equal to $2/3$ of body length, first long, somewhat club-shaped, second shortest, third almost $1\frac{1}{4}$ times as long as second and slender than second, fourth subequal to length of second and third combined, fifth very slightly longer than fourth, fifth to seventh subequal to each other in length and shape, eighth very

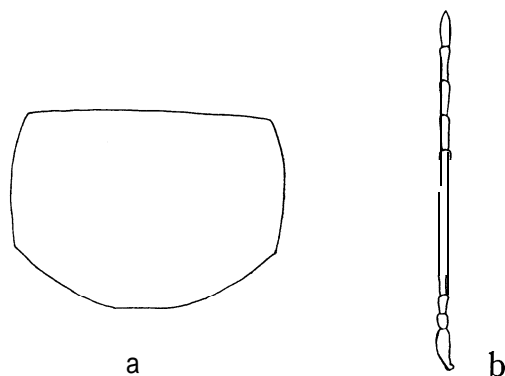


Fig. 2. *Monolepta simlense* Kimoto, n. sp. a. Prothorax, b. Antennae.

slightly shorter than seventh and subequal to fourth in length, eleventh subequal to tenth in length but its apex pointed. Pronotum transverse, subquadrate, about $1\frac{1}{2}$ times as wide as long, widest at middle, lateral margin distinctly rounded, and narrowed anteriorly and posteriorly, anterior margin almost straight, posterior margin widely rounded posteriorly, surface with a pair of distinct depressions, finely and rather closely punctate. Scutellum subtriangular, rounded at apex, surface smooth, shining, impunctate. Elytra much wider than prothorax at base, gradually widened posteriorly and rounded at apex, surface closely and finely punctate.

Length 3.0-3.5 mm.

Holotype : Simla, Himalayas (Zoological Museum, Berlin).

Paratype : 1 ex., same as the holotype.

This new species is resembling *M. conforme* Weise from Darjeeling, but separable from this in having the head entirely reddish brown, lateral margin of pronotum distinctly rounded and the third antennal joint distinctly longer than second. The type of *conforme* is preserved in the Swedish Museum of Natural History, Stockholm.

Subfamily **Alticinae****Nonarthra variabile** Baly

Sikkim, Himalayas (2 exs.). Simla, Himalayas (**4 exs.**).

Psylliodes tenebrosus Jacoby

Simla, Himalayas (1 ex.).

Podontia quatuordecimpunctata (Linnaeus)

Sikkim, Himalayas (**4 exs.**).

Ophrida marmorea (Wiedemann)

Sikkim, Himalayas (1 ex.).

Xuthea orientalis Baly

Sikkim, Himalayas (10 exs.). Simla, Himalayas (5 exs.).

Glaucosphaera cyanea (Duvivier)

Sikkim, Himalayas (1 ex.).

Nisotra orbiculata (Motschulsky)

Sikkim, Himalayas (**4 exs.**).

Hyphasoma indicum (Baly)

Sikkim, Himalayas (1 ex.).

Hespera sericea Weise

Sikkim, Himalayas (3 exs.). Simla, Himalayas (1 ex.).

Longitarsus cyanipennis Bryant

Simla, Himalayas (**4 exs.**).

Longitarsus gola Maulik

Simla, Himalayas (1 ex.).

Aphthona andreweisi Jacoby

Simla, Himalayas (**4 exs.**).

Aphthonaltica semipicea (Jacoby), New **Combination**

Simla, Himalayas (3 exs.).

Altica himensis (Shukla)

Sikkim, Himalayas (8 exs.). Simla, Himalayas (10 exs.). "Himalaya." (1 ex., Hoffmeier).

Altica birmensis (Jacoby)

Sikkim, Himalayas (3 exs.).

This species was treated by Maulik (1926, Fauna Ind., Chrysom. & Halt., 422) as a synonym of **cyanea** Weber. According to my study on the type of *birmensis* Jacoby, preserved in the collection of the British Museum (Nat. Hist.), this species is different from *cyanea* Weber, in having the elytral punctation finer, smaller size of body length and longitudinal shallow depressions behind humeri.

Altica foveicollis (Jacoby)

Sikkim, Himalayas (1 ex.).