

Role for piRNAs and Noncoding RNA in de Novo DNA Methylation of the Imprinted Mouse Rasgrf1 Locus

Watanabe, Toshiaki

Division of Human Genetics and Department of Integrated Genetics, National Institute of Genetics, Research Organization of Information and Systems | School of Medicine, Yale University

Tomizawa, Shin-ichi

Laboratory of Developmental Genetics and Imprinting, The Babraham Institute | Division of Human Genetics and Department of Integrated Genetics, National Institute of Genetics, Research Organization of Information and Systems

Mitsuya, Kohzoh

Center for Pregnancy and Newborn Research, Department of Obstetrics and Gynecology, University of Texas Health Science Center at San Antonio

Totoki, Yasushi

Division of Cancer Genomics, National Cancer Center Research Institute

他

<https://hdl.handle.net/2324/19806>

出版情報 : Science. 332, pp.848-852, 2011-05-13. American Association for Advancement of Science

バージョン :

権利関係 :

A

RT-PCR

Soma Germ 16.5 dpc testes

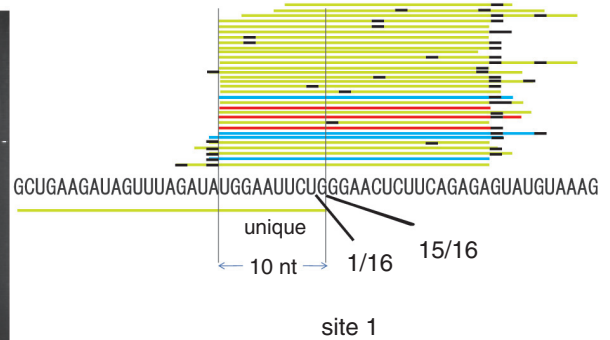
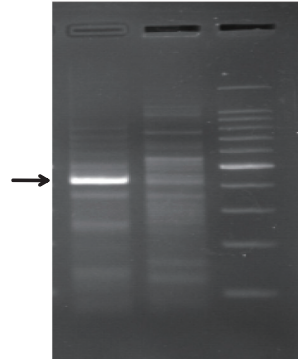


B

Modified RACE

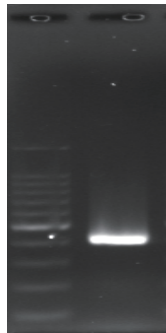
MitoPLD

+/- -/-

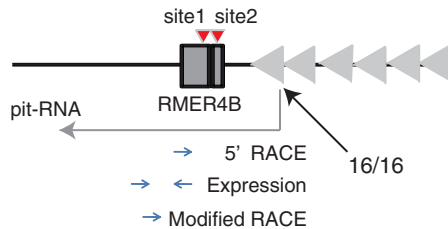


D

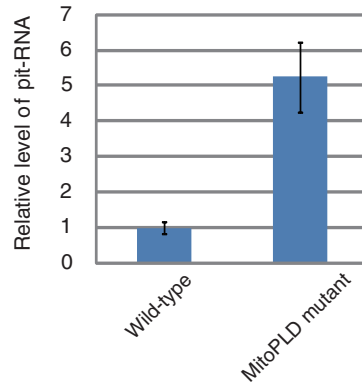
5' RACE



Decreased methylation



C



E

