

外題

中院也

表紙

一河

玄川

卷名

一婦

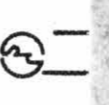
紙枚九十八枚
墨字百九十六枚

0



150 cm

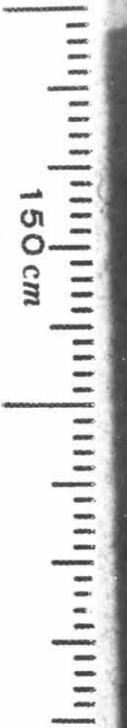
10



SEKISUI JUSHI

20

0



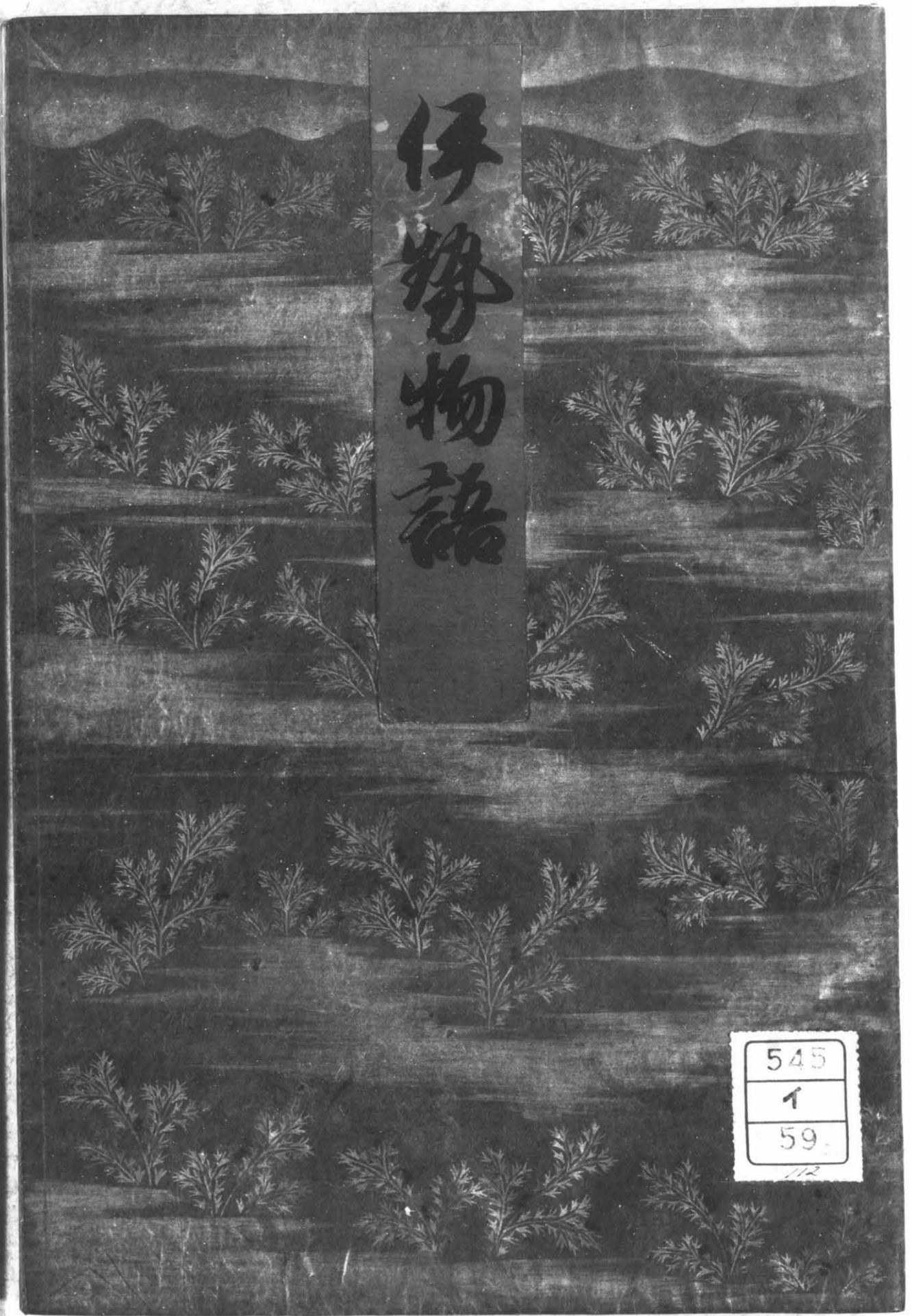
150 cm

10



SEKISUI JUSHI

20



伊勢物語

545
1
59
112

Handwritten text in cursive script, likely bleed-through from the reverse side of the page. The text is difficult to decipher but appears to contain several lines of prose.



Handwritten text in cursive script, top line on the right page.

Handwritten text in cursive script, middle section on the right page.

Handwritten text in cursive script, bottom section on the right page.



Handwritten text in cursive script, spanning the left page and the bottom of the right page.

一、
 二、
 三、
 四、
 五、
 六、
 七、
 八、
 九、
 十、

あつたふらふらといふあつたふらふら
さうさうさうさうさうさうさうさうさう
さうさうさうさうさうさうさうさうさう
あつたふらふらといふあつたふらふら
さうさうさうさうさうさうさうさうさう

返

あつたふらふらといふあつたふらふら
さうさうさうさうさうさうさうさうさう

あつたふらふらといふあつたふらふら
さうさうさうさうさうさうさうさうさう
あつたふらふらといふあつたふらふら
さうさうさうさうさうさうさうさうさう
あつたふらふらといふあつたふらふら
さうさうさうさうさうさうさうさうさう
あつたふらふらといふあつたふらふら
さうさうさうさうさうさうさうさうさう

折るはくつうそんまを

じりたをいんかむけりちちちちち

らちちちちちちちちちちちちち

ほちちちちちちちちちちちちち

あちちちちちちちちちちちちち

思ひます

ちちちちちちちちちちちちち

ひちちちちちちちちちちちちち



とちちちちちちちちちちちちち

あちちちちちちちちちちちちち

ちちちちちちちちちちちちち

とちちちちちちちちちちちちち

ちちちちちち

しちちちちちちちちちちちちち

ちちちちちちちちちちちちち

あちちちちちちちちちちちちち

Handwritten text in a cursive script, likely a letter or document. The text is written in dark ink on aged paper. The first line is the most legible, starting with "Dear Sir". The rest of the text is mostly illegible due to fading and the cursive style.

Handwritten text in a cursive script, likely a letter or document. The text is written in dark ink on aged paper. The first line is the most legible, starting with "Dear Sir". The rest of the text is mostly illegible due to fading and the cursive style.

Handwritten text in cursive script, likely a signature or name, possibly including the word "Cambridge".

Handwritten text in cursive script, possibly a date or a specific reference.

Handwritten text in cursive script, possibly a date or a specific reference, including the word "Cambridge".

Handwritten text in a cursive script, likely a list or account. The text is written in dark ink on aged paper. The lines are roughly horizontal and contain several lines of text per page. The script is highly stylized and difficult to decipher without a key.

Handwritten text in a cursive script, continuing from the previous page. The text is written in dark ink on aged paper. The lines are roughly horizontal and contain several lines of text per page. The script is highly stylized and difficult to decipher without a key.

Handwritten text in a cursive script, likely a letter or a page from a manuscript. The text is written in dark ink on aged paper. It consists of approximately 10 lines of text, starting with a large initial letter. The script is highly stylized and difficult to decipher without a key.

Handwritten text in a cursive script, likely a letter or a page from a manuscript. The text is written in dark ink on aged paper. It consists of approximately 10 lines of text, starting with a large initial letter. The script is highly stylized and difficult to decipher without a key.

返す

神の御神に

もろろの御神に

しんねいなる

あつた

あつた

あつた

我神初

あつた

あつた

あつた

あつた

あつた

あつた

あつた

あつた

Handwritten text in cursive script, possibly Latin or a European language, consisting of several lines of text.

Handwritten text in cursive script, possibly Latin or a European language, consisting of several lines of text.

ち
The name of the vessel

名を記す

名を記す

名を記す

名を記す

名を記す

名を記す

名を記す

名を記す

名を記す

名を記す

名を記す

名を記す

名を記す

名を記す

名を記す

Handwritten text in a cursive script, likely a list or account. The text is written in dark ink on aged paper. The lines are somewhat irregular and bleed through from the reverse side of the page.

Handwritten text in a cursive script, continuing from the previous page. The text is written in dark ink on aged paper. The lines are somewhat irregular and bleed through from the reverse side of the page.

Handwritten text in a cursive script, likely Japanese, consisting of approximately 12 lines of text.



Handwritten text in a cursive script, likely Japanese, consisting of approximately 12 lines of text.

Handwritten text in a cursive script, likely a historical document or manuscript. The text is arranged in approximately 10 horizontal lines across the page. The script is dense and characteristic of early modern European handwriting. The ink is dark, and the paper shows signs of age and wear.

あくる日にうきをたぐらうすま

あねあねとくひのうきを

ふかきうき

うきをたぐらうすま

あねあねとくひのうきを

ふかきうき

あくる日にうきをたぐらうすま

あねあねとくひのうきを

あくる日にうきをたぐらうすま

あねあねとくひのうきを

あくる日にうきをたぐらうすま

あねあねとくひのうきを

あくる日にうきをたぐらうすま

あねあねとくひのうきを

あくる日にうきをたぐらうすま

あねあねとくひのうきを

我野のつらきものなるべし

しづかにしるすはるる

じつとあひまはるる

あはれはるる

くちをたふす

たふすはるる

あはれはるる

あはれはるる

あはれはるる

あはれはるる

あはれはるる

あはれはるる

あはれはるる

あはれはるる

あはれはるる

あはれはるる

くはきはは 衆は 衆は 衆は 衆は 衆は 衆は 衆は 衆は 衆は 衆は
しん 衆は 衆は 衆は 衆は 衆は 衆は 衆は 衆は 衆は 衆は
めい 衆は 衆は 衆は 衆は 衆は 衆は 衆は 衆は 衆は 衆は
衆は 衆は 衆は 衆は 衆は 衆は 衆は 衆は 衆は 衆は
衆は 衆は 衆は 衆は 衆は 衆は 衆は 衆は 衆は 衆は
衆は 衆は 衆は 衆は 衆は 衆は 衆は 衆は 衆は 衆は
衆は 衆は 衆は 衆は 衆は 衆は 衆は 衆は 衆は 衆は

くはきはは 衆は 衆は 衆は 衆は 衆は 衆は 衆は 衆は 衆は 衆は
しん 衆は 衆は 衆は 衆は 衆は 衆は 衆は 衆は 衆は 衆は
めい 衆は 衆は 衆は 衆は 衆は 衆は 衆は 衆は 衆は 衆は
衆は 衆は 衆は 衆は 衆は 衆は 衆は 衆は 衆は 衆は
衆は 衆は 衆は 衆は 衆は 衆は 衆は 衆は 衆は 衆は
衆は 衆は 衆は 衆は 衆は 衆は 衆は 衆は 衆は 衆は
衆は 衆は 衆は 衆は 衆は 衆は 衆は 衆は 衆は 衆は

昔年有...
...
...
...
...
...
...
...
...
...

...
...
...
...
...
...
...
...
...
...

あはれなる御心

あはれなる御心

あはれなる御心

あはれなる御心

あはれなる御心

あはれなる御心

あはれなる御心

あはれなる御心

あはれなる御心

あはれなる御心

あはれなる御心

あはれなる御心

あはれなる御心

あはれなる御心

あはれなる御心

あはれなる御心

Handwritten text in cursive script, likely a letter or document, written on the left page of the manuscript.

Handwritten text in cursive script, likely a letter or document, written on the right page of the manuscript.

Handwritten text in a cursive script, likely a historical document or manuscript. The text is arranged in approximately 10 horizontal lines across the page.

Handwritten text in a cursive script, likely a historical document or manuscript. The text is arranged in approximately 10 horizontal lines across the page.

Handwritten text in a cursive script, likely a historical document or letter. The text is written in a dark ink on aged, slightly textured paper. It consists of approximately 10 lines of text, starting with a large initial letter that appears to be 'C'. The script is fluid and characteristic of the 17th or 18th century.

Handwritten text in a cursive script, continuing from the previous page. It consists of approximately 10 lines of text, starting with a large initial letter that appears to be 'C'. The script is fluid and characteristic of the 17th or 18th century.

Handwritten text in a cursive script, likely a letter or document, written on the left page of the manuscript. The text is arranged in several lines, starting from the top right and moving downwards. The script is dense and characteristic of early modern European cursive.

Handwritten text in a cursive script, likely a letter or document, written on the right page of the manuscript. The text is arranged in several lines, starting from the top right and moving downwards. The script is dense and characteristic of early modern European cursive.

Handwritten text in cursive script, likely a letter or document, written on the right page of the manuscript. The text is dense and fills most of the page.

Handwritten text in cursive script, likely a letter or document, written on the left page of the manuscript. The text is dense and fills most of the page.

Handwritten text in a cursive script, likely a letter or document, written on the left page of the manuscript. The text is arranged in approximately 10 horizontal lines, flowing from right to left across the page.

Handwritten text in a cursive script, likely a letter or document, written on the right page of the manuscript. The text is arranged in approximately 10 horizontal lines, flowing from right to left across the page.

言ありえり年とれはくくのちりには
うれあひしはらへまけらけはけり
しらのまよりけりくまつねにわたん
しつらつらけりくひいしく城に
もうりんのちりまにちりちり
うれあひしはらへまけり
しらのまよりけりくまつねにわたん
しつらつらけりくひいしく城に

ありしはらへまけりくまつねにわたん
しつらつらけりくひいしく城に
もうりんのちりまにちりちり
うれあひしはらへまけり
しらのまよりけりくまつねにわたん
しつらつらけりくひいしく城に
もうりんのちりまにちりちり
うれあひしはらへまけり
しらのまよりけりくまつねにわたん
しつらつらけりくひいしく城に

Handwritten text in cursive script, likely a letter or document, written on the right page of the manuscript. The text is dense and fills most of the page.

Handwritten text in cursive script, likely a letter or document, written on the left page of the manuscript. The text is dense and fills most of the page.

Handwritten text in a cursive script, likely a historical document or manuscript. The text is written in a dark ink on aged, slightly yellowed paper. The script is dense and flowing, characteristic of early modern cursive. The text is arranged in approximately 12 lines across the page. The first line begins with a large, ornate initial letter, possibly 'D'. The text continues down the page, with some lines appearing to be part of a list or a series of entries. The handwriting is consistent throughout, suggesting a single scribe. The paper shows signs of age, including some staining and a slightly uneven texture. The overall appearance is that of a well-preserved historical document.

Handwritten text in Arabic script, consisting of approximately 12 lines of dense, cursive writing.

Handwritten text in Arabic script, consisting of approximately 12 lines of dense, cursive writing.

Handwritten text in Arabic script, likely a list or account, written on the left page of an open manuscript. The text is arranged in approximately 10 horizontal lines, starting from the top right and moving towards the bottom left. The script is cursive and appears to be a form of Maghrebi or Andalusian Arabic.

Handwritten text in Arabic script, likely a list or account, written on the right page of an open manuscript. The text is arranged in approximately 10 horizontal lines, starting from the top right and moving towards the bottom left. The script is cursive and appears to be a form of Maghrebi or Andalusian Arabic.

春の風は花を散らす
又も春の風は花を散らす
けさの春は花を散らす
はなは花を散らす
あはれは花を散らす
とくは花を散らす
しは花を散らす
三月は花を散らす

春の風は花を散らす
あはれは花を散らす
しは花を散らす
けさの春は花を散らす
あはれは花を散らす
しは花を散らす
けさの春は花を散らす
あはれは花を散らす
しは花を散らす
けさの春は花を散らす

わがをばしきまのあふとあつ花こ
けしはなはあつあつありけり
のささるるるるるるるるるるる
くはくはくはくはくはくはくはく
あつあつあつあつあつあつあつ

じつははの馬場たけの白ひん
をささるるるるるるるるるるる
あつあつあつあつあつあつあつ
あつあつあつあつあつあつあつ

あつあつあつあつあつあつあつ
あつあつあつあつあつあつあつ
あつあつあつあつあつあつあつ

あつあつあつあつあつあつあつ
あつあつあつあつあつあつあつ
あつあつあつあつあつあつあつ
昔男後涼殿のあつあつあつあつ

Handwritten text in a cursive script, likely a historical document or letter. The text is written in a dark ink on aged paper. The script is highly stylized and difficult to decipher without a key. It appears to be a single paragraph of text.

Handwritten text in a cursive script, likely a historical document or letter. The text is written in a dark ink on aged paper. The script is highly stylized and difficult to decipher without a key. It appears to be a single paragraph of text.

京極黃門定家之自筆之任物語
去年仲秋感之之時本諸方展
轉之旨觸耳果年作命之如忽
落平裡我家之書信何物若之
故且夕之物既之恐仍自掉
禿毫不違一字寫之再三如勘
是為容易今遊目也

長安十七年十月下旬

書別

Handwritten text in cursive script, likely a signature or a note, written vertically on the right page of the book. The text is difficult to decipher due to the cursive style and fading.



九州大學圖書印

