

[15_01]九州大学大型計算機センター広報表紙奥付等

<https://hdl.handle.net/2324/1474922>

出版情報：九州大学大型計算機センター広報. 15 (1), 1982-03-10. 九州大学大型計算機センター
バージョン：
権利関係：

業 務 報 告

ジョブ処理状況調べ

COMPUTER SYSTEM STATISTICS FOR OCTOBER, 1981 (26 DAYS / 297.2 HOURS IN OPERATION)

FACOM M-200 DUAL PROCESSOR SYSTEM WITH 16 MB MAIN MEMORY.

JOB CLASS	B A T C H P R O C E S S I N G S Y S T E M										T I M E S H A R I N G S Y S T E M	
	A	B	C	E	G	L	N	D	ALL			
NUMBER OF JOBS											NUMBER OF SESSIONS	
* TOTAL	13,259	4,381	1,269	231	94	43	1,349	8	20,634	* TOTAL	20,643	
* LOCAL	3,895	1,079	402	45	52	0	635	8	6,116	* VIA SWITCHED LINES	3,930	
RJE	3,215	1,326	369	121	0	32	0	0	5,063	VIA PRIVATELY LEASED LINES	16,713	
FIB	6,149	1,976	498	65	42	11	714	0	9,455			
* USING CARD-PUNCH	77	36	15	6	0	0	1	0	135	* USING CARD-PUNCH	0	
USING PLOTTER <#1>	978	560	129	10	0	1	93	0	1,771	USING PLOTTER <#1>	692	
USING PLOTTER <#2>	0	0	0	0	0	0	0	0	0	USING PLOTTER <#2>	0	
AVERAGE AMOUNT OF RESOURCES USED PER JOB											AVERAGE AMOUNT OF RESOURCES USED PER SESSION	
* REGION SIZE (KB)	873	954	1,060	2,071	718	782	317	2,329	882	* REGION SIZE (KB)	451	
CPU TIME (SEC)	6.94	53.10	265.62	962.99	14.31	8.65	19.41	9456.76	46.48	CPU TIME (SEC)	15.14	
EXCP TIMES	386	747	1,179	1,643	1,774	606	1,425	405	596	EXCP TIMES	954	
* LINES INPUT <RJE>	181	222	280	643	16	205	33	0	195	* LINES INPUT	61	
LINES OUTPUT <RJE>	716	1,276	1,726	2,490	0	1,094	0	0	980	LINES OUTPUT	325	
* CARDS INPUT	244	405	513	361	13	0	66	951	271			
* LINES PRINTED	569	1,418	2,320	2,814	257	1,759	471	7,712	888	* LINES PRINTED	846	
PAGES PRINTED	11	23	30	45	5	22	10	82	15	PAGES PRINTED	15	
* CARDS PUNCHED	83	491	71	110	0	0	315	0	193	* CARDS PUNCHED	0	
* STEPS PLOTTED <#1> (X1000)	122	321	481	343	0	1,557	170	0	216	* STEPS PLOTTED <#1> (X1000)	278	
STEPS PLOTTED <#2> (X1000)	0	0	0	0	0	0	0	0	0	STEPS PLOTTED <#2> (X1000)	0	
AVERAGE ELAPSED TIME (MIN)	0.2	1.1	2.5	16.1	1.0	0.6	0.3	27.9	0.7	AVERAGE CONNECT TIME (MIN)	25	

NOTES : EACH AVERAGE IS ABOUT JOBS OR SESSIONS ACTUALLY USING THE CORRESPONDING RESOURCE.
 ELAPSED TIME MEANS THE INTERVAL BETWEEN THE TIME A JOB ENTERS THE SYSTEM AND THE TIME ITS COMPUTATION ENDS.
 <#1> INDICATES FACOM 6202B PLOTTER, AND <#2> WATANABE WX625 PLOTTER.

COMPUTER SYSTEM STATISTICS FOR NOVEMBER, 1981 (23 DAYS / 262.1 HOURS IN OPERATION)

FACOM M-200 DUAL PROCESSOR SYSTEM WITH 16 MB MAIN MEMORY.

B A T C H P R O C E S S I N G S Y S T E M										T I M E S H A R I N G S Y S T E M	
J O B C L A S S	A	B	C	E	G	L	N	D	A L L		
NUMBER OF JOBS										NUMBER OF SESSIONS	
* TOTAL	13,716	4,089	829	384	33	108	1,062	0	20,221	* TOTAL	22,055
* LOCAL	4,774	1,182	251	41	16	0	468	0	6,732	* VIA SWITCHED LINES	3,943
RJE	3,500	1,413	331	137	0	66	0	0	5,447	VIA PRIVATELY LEASED LINES	18,112
FIB	5,442	1,494	247	206	17	42	594	0	8,042		
* USING CARD-PUNCH	109	55	3	4	0	0	2	0	173	* USING CARD-PUNCH	0
USING PLOTTER <#1>	946	564	67	10	0	9	76	0	1,672	USING PLOTTER <#1>	471
USING PLOTTER <#2>	0	0	0	0	0	0	0	0	0	USING PLOTTER <#2>	1
AVERAGE AMOUNT OF RESOURCES USED PER JOB										AVERAGE AMOUNT OF RESOURCES USED PER SESSION	
* REGION SIZE (KB)	899	955	1,085	1,929	901	714	413	0	913	* REGION SIZE (KB)	437
CPU TIME (SEC)	8.83	53.01	249.06	530.82	12.63	19.98	11.75	0.00	37.35	CPU TIME (SEC)	12.41
EXCP TIMES	407	759	2,694	4,665	1,765	1,158	1,892	0	731	EXCP TIMES	801
* LINES INPUT <RJE>	189	236	280	278	16	128	20	0	197	* LINES INPUT	53
LINES OUTPUT <RJE>	790	1,272	1,215	1,549	0	1,986	0	0	969	LINES OUTPUT	290
* CARDS INPUT	265	309	398	414	13	0	59	0	263		
* LINES PRINTED	724	1,468	2,210	2,297	115	296	534	0	941	* LINES PRINTED	784
PAGES PRINTED	12	18	28	32	4	7	10	0	14	PAGES PRINTED	13
* CARDS PUNCHED	121	387	1,876	753	0	0	255	0	252	* CARDS PUNCHED	0
* STEPS PLOTTED <#1> (X1000)	138	311	411	578	0	658	162	0	214	* STEPS PLOTTED <#1> (X1000)	285
STEPS PLOTTED <#2> (X1000)	0	0	0	0	0	0	0	0	0	STEPS PLOTTED <#2> (X1000)	48
AVERAGE ELAPSED TIME (MIN)	0.7	3.1	11.4	39.1	1.7	0.9	0.4	0.0	2.4	AVERAGE CONNECT TIME (MIN)	28

NOTES : EACH AVERAGE IS ABOUT JOBS OR SESSIONS ACTUALLY USING THE CORRESPONDING RESOURCE.
ELAPSED TIME MEANS THE INTERVAL BETWEEN THE TIME A JOB ENTERS THE SYSTEM AND THE TIME ITS COMPUTATION ENDS.
<#1> INDICATES FACOM 6202B PLOTTER, AND <#2> WATANABE WX625 PLOTTER.

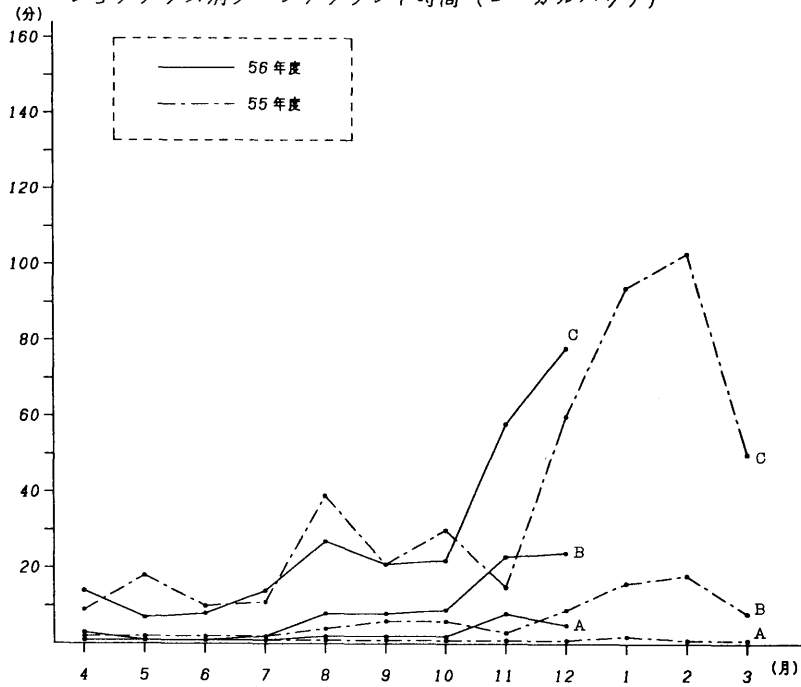
COMPUTER SYSTEM STATISTICS FOR DECEMBER, 1981 (22 DAYS / 257.2 HOURS IN OPERATION)

FACOM M-200 DUAL PROCESSOR SYSTEM WITH 16 MB MAIN MEMORY.

B A T C H P R O C E S S I N G S Y S T E M										T I M E S H A R I N G S Y S T E M	
J O B C L A S S	A	B	C	E	G	L	N	D	A L L		
NUMBER OF JOBS										NUMBER OF SESSIONS	
* TOTAL	19,965	5,742	1,008	347	215	124	1,304	6	28,711	* TOTAL	26,534
* LOCAL	7,458	1,638	308	60	4	4	494	6	9,972	* VIA SWITCHED LINES	4,264
RJE	4,046	1,663	375	115	0	100	0	0	6,299	VIA PRIVATELY LEASED LINES	22,270
FIB	8,461	2,441	325	172	211	20	810	0	12,440	* USING CARD-PUNCH	0
* USING CARD-PUNCH	147	51	17	1	0	0	1	0	217	USING PLOTTER <#1>	796
USING PLOTTER <#1>	1,360	587	70	13	0	8	91	0	2,129	USING PLOTTER <#2>	0
USING PLOTTER <#2>	0	0	0	0	0	0	0	0	0		
AVERAGE AMOUNT OF RESOURCES USED PER JOB										AVERAGE AMOUNT OF RESOURCES USED PER SESSION	
* REGION SIZE (KB)	912	1,020	1,243	1,697	779	768	322	527	930	* REGION SIZE (KB)	459
CPU TIME (SEC)	9.08	68.47	324.18	966.03	10.44	67.54	8.76	354.53	43.21	CPU TIME (SEC)	17.45
EXCP TIMES	438	963	1,216	3,518	652	2,947	1,995	9,050	683	EXCP TIMES	987
* LINES INPUT <RJE>	142	424	294	312	17	298	23	0	207	* LINES INPUT	58
LINES OUTPUT <RJE>	702	1,444	1,577	1,997	0	847	0	0	966	LINES OUTPUT	353
* CARDS INPUT	265	361	246	466	14	962	75	18	272	* LINES PRINTED	892
* LINES PRINTED	703	1,832	2,164	3,743	116	1,672	268	823	985	PAGES PRINTED	16
PAGES PRINTED	13	25	28	41	5	39	6	7	16	* CARDS PUNCHED	0
* CARDS PUNCHED	158	592	202	183	0	0	19	0	263	* STEPS PLOTTED <#1> (X1000)	366
* STEPS PLOTTED <#1> (X1000)	141	436	805	363	0	1,017	342	0	257	STEPS PLOTTED <#2> (X1000)	0
STEPS PLOTTED <#2> (X1000)	0	0	0	0	0	0	0	0	0		
AVERAGE ELAPSED TIME (MIN)	0.6	3.6	16.2	35.7	1.3	1.7	0.4	1.9	2.2	AVERAGE CONNECT TIME (MIN)	29

NOTES : EACH AVERAGE IS ABOUT JOBS OR SESSIONS ACTUALLY USING THE CORRESPONDING RESOURCE.
 ELAPSED TIME MEANS THE INTERVAL BETWEEN THE TIME A JOB ENTERS THE SYSTEM AND THE TIME ITS COMPUTATION ENDS.
 <#1> INDICATES FACOM 6202B PLOTTER, AND <#2> WATANABE WX625 PLOTTER.

ジョブクラス別ターンアラウンド時間 (ローカルバッチ)



ジョブクラス別ターンアラウンド時間 (リモートバッチ)

