

[16_01]九州大学大型計算機センター広報表紙奥付等

<https://hdl.handle.net/2324/1468061>

出版情報：九州大学大型計算機センター広報. 16 (1), 1983-01-25. 九州大学大型計算機センター
バージョン：
権利関係：

ジョブ処理状況調べ

業 務 報 告

COMPUTER SYSTEM STATISTICS FOR OCTOBER, 1982 (25 DAYS / 354.2 HOURS IN OPERATION)

FACOM M-200 DUAL PROCESSOR SYSTEM WITH 24 MB MAIN MEMORY.

B A T C H P R O C E S S I N G S Y S T E M										T I M E S H A R I N G S Y S T E M	
J O B C L A S S	A	B	C	E	G	L	N	D	A L L		
N U M B E R O F J O B S										N U M B E R O F S E S S I O N S	
* T O T A L	11,738	4,324	1,251	498	188	119	1,399	1	19,518	* T O T A L	23,844
* L O C A L	1,604	827	377	227	12	13	310	1	3,371	* V I A S W I T C H E D L I N E S	2,500
R J E	2,068	1,112	386	73	0	78	0	0	3,717	V I A P R I V A T E L Y L E A S E D L I N E S	21,344
F I B	8,066	2,385	488	198	176	28	1,089	0	12,430	* U S I N G C A R D - P U N C H	0
* U S I N G C A R D - P U N C H	48	21	3	2	0	0	0	0	74	U S I N G P L O T T E R <#1>	352
U S I N G P L O T T E R <#1>	425	233	49	173	0	0	30	0	910	U S I N G P L O T T E R <#2>	0
U S I N G P L O T T E R <#2>	0	0	0	0	0	0	0	0	0		
A V E R A G E A M O U N T O F R E S O U R C E S U S E D P E R J O B										A V E R A G E A M O U N T O F R E S O U R C E S U S E D P E R S E S S I O N	
* R E G I O N S I Z E (K B)	967	1,061	1,166	2,184	797	658	301	5,120	987	* R E G I O N S I Z E (K B)	581
C P U T I M E (S E C)	9.06	56.76	279.68	703.23	4.46	10.58	4.35	8396.55	55.15	C P U T I M E (S E C)	15.56
E X C P T I M E S	847	1,196	1,350	4,287	3,011	1,642	1,449	4,968	1,110	E X C P T I M E S	1,062
* L I N E S I N P U T <R J E>	130	165	469	312	9	218	14	0	151	* L I N E S I N P U T	62
L I N E S O U T P U T <R J E>	633	1,054	1,751	2,868	0	561	0	0	910	L I N E S O U T P U T	318
* C A R D S I N P U T	235	288	645	505	8	75	45	45	293	* L I N E S P R I N T E D	804
* L I N E S P R I N T E D	674	1,322	2,225	1,250	183	576	212	6,102	916	P A G E S P R I N T E D	15
P A G E S P R I N T E D	13	24	36	20	4	12	5	64	17	* C A R D S P U N C H E D	0
* C A R D S P U N C H E D	192	109	15	1,835	0	0	0	0	205	* S T E P S P L O T T E D <#1> (X 1 0 0 0)	352
* S T E P S P L O T T E D <#1> (X 1 0 0 0)	106	324	618	423	0	0	234	0	254	S T E P S P L O T T E D <#2> (X 1 0 0 0)	0
S T E P S P L O T T E D <#2> (X 1 0 0 0)	0	0	0	0	0	0	0	0	0		
A V E R A G E E L A P S E D T I M E (M I N)	0.3	0.7	2.8	8.0	2.6	7.5	0.3	25.1	0.8	A V E R A G E C O N N E C T T I M E (M I N)	22

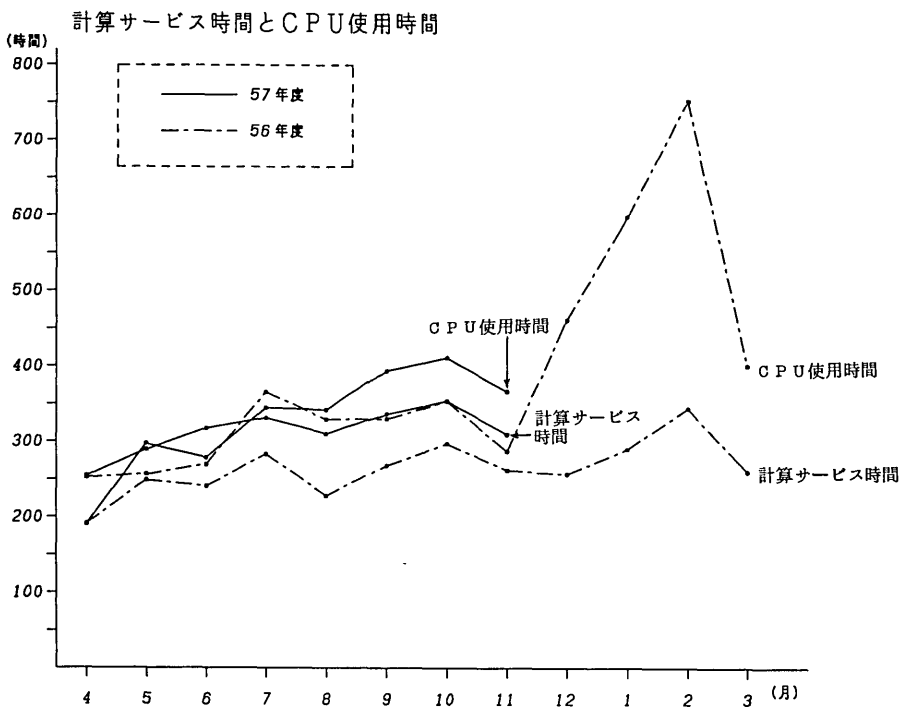
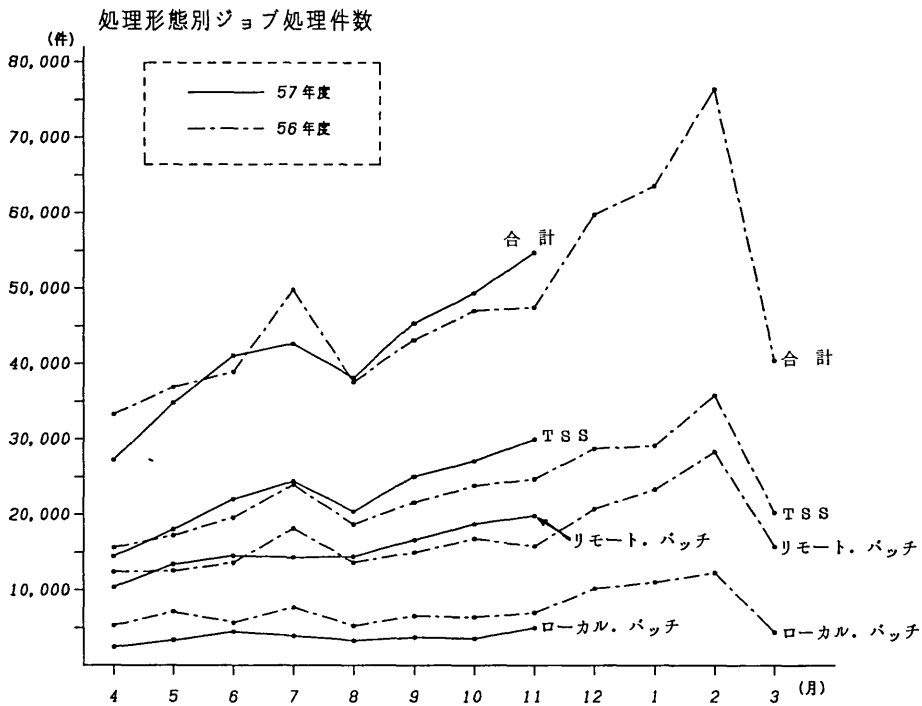
NOTES : EACH AVERAGE IS ABOUT JOBS OR SESSIONS ACTUALLY USING THE CORRESPONDING RESOURCE.
ELAPSED TIME MEANS THE INTERVAL BETWEEN THE TIME A JOB ENTERS THE SYSTEM AND THE TIME ITS COMPUTATION ENDS.
<#1> INDICATES FACOM 6202B PLOTTER, AND <#2> WATANABE WX625 PLOTTER.

COMPUTER SYSTEM STATISTICS FOR NOVEMBER, 1982 (25 DAYS / 309.4 HOURS IN OPERATION)

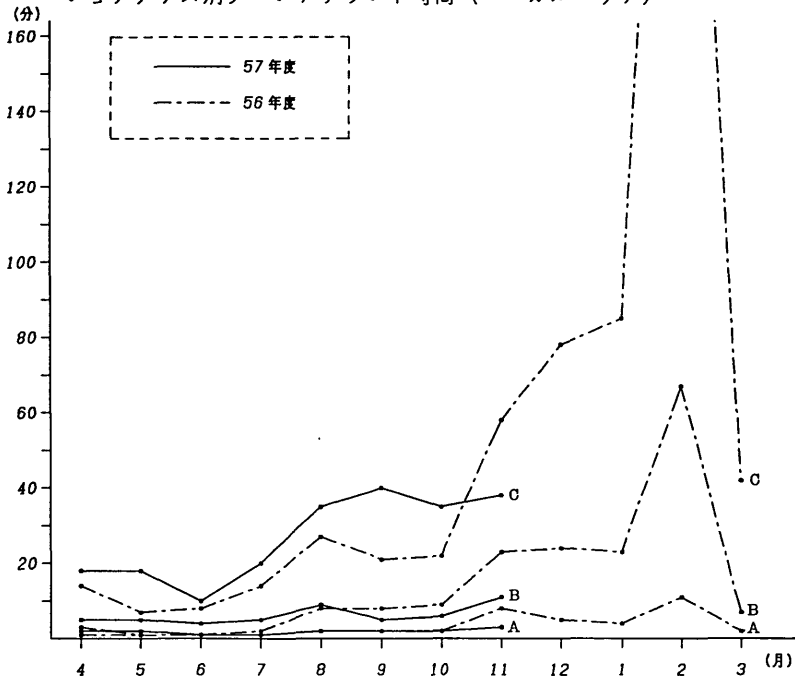
FACOM M-200 DUAL PROCESSOR SYSTEM WITH 32 MB MAIN MEMORY.

B A T C H P R O C E S S I N G S Y S T E M										T I M E S H A R I N G S Y S T E M	
JOB CLASS	A	B	C	E	G	L	N	D	ALL		
NUMBER OF JOBS										NUMBER OF SESSIONS	
* TOTAL	14,618	4,929	1,145	345	249	44	1,321	6	22,657	* TOTAL	27,454
* LOCAL	2,965	901	341	57	55	6	390	6	4,721	* VIA SWITCHED LINES	3,300
RJE	1,945	1,553	235	78	0	31	0	0	3,842	VIA PRIVATELY LEASED LINES	24,154
FIB	9,708	2,475	569	210	194	7	931	0	14,094		
* USING CARD-PUNCH	45	85	22	1	0	0	5	0	158	* USING CARD-PUNCH	0
USING PLOTTER <#1>	338	381	64	28	0	4	27	0	842	USING PLOTTER <#1>	556
USING PLOTTER <#2>	0	0	0	0	0	0	0	0	0	USING PLOTTER <#2>	0
AVERAGE AMOUNT OF RESOURCES USED PER JOB										AVERAGE AMOUNT OF RESOURCES USED PER SESSION	
* REGION SIZE (KB)	1,015	1,126	1,251	2,040	739	764	414	716	1,033	* REGION SIZE (KB)	577
CPU TIME (SEC)	8.79	60.86	263.71	498.93	4.05	13.78	6.86	5.54	39.72	CPU TIME (SEC)	14.36
EXCP TIMES	763	1,192	1,604	2,096	3,364	1,750	1,842	1,977	999	EXCP TIMES	1,076
* LINES INPUT <RJE>	116	233	261	490	8	148	23	0	149	* LINES INPUT	65
LINES OUTPUT <RJE>	645	1,173	2,501	1,626	0	741	0	0	1,000	LINES OUTPUT	311
* CARDS INPUT	198	301	614	918	6	29	79	41	244		
* LINES PRINTED	731	1,527	2,095	1,990	167	0	255	348	960	* LINES PRINTED	749
PAGES PRINTED	14	26	39	26	5	0	6	6	17	PAGES PRINTED	14
* CARDS PUNCHED	92	119	1,126	2,016	0	0	209	0	267	* CARDS PUNCHED	0
* STEPS PLOTTED <#1> (X1000)	134	429	762	1,348	0	88	408	0	364	* STEPS PLOTTED <#1> (X1000)	440
STEPS PLOTTED <#2> (X1000)	0	0	0	0	0	0	0	0	0	STEPS PLOTTED <#2> (X1000)	0
AVERAGE ELAPSED TIME (MIN)	0.2	1.5	4.6	9.1	0.7	18.3	0.8	0.5	0.9	AVERAGE CONNECT TIME (MIN)	24

NOTES : EACH AVERAGE IS ABOUT JOBS OR SESSIONS ACTUALLY USING THE CORRESPONDING RESOURCE.
ELAPSED TIME MEANS THE INTERVAL BETWEEN THE TIME A JOB ENTERS THE SYSTEM AND THE TIME ITS COMPUTATION ENDS.
<#1> INDICATES FACOM 6202B PLOTTER, AND <#2> WATANABE WX625 PLOTTER.



ジョブクラス別ターンアラウンド時間 (ローカルバッチ)



ジョブクラス別ターンアラウンド時間 (リモートバッチ)

