



水鏡



貴重書

上編

文政丙戌
孟春新版
五百六

馬喰町二丁目
西村屋與八開鐫



特
19

2
544

40. 8. 26

ア306531



牽牛織女願絲竹上編

著 曲亭馬琴 歌川國貞 畫



文政九年丙申
春正月吉日
取金六册合局
江戸馬喰町貞
町目書林地本
問屋永壽堂
西村屋

壹

みかゝるなむしりしとて若く散る浪速津に梳くといふのり親桃の護と受と
 重箱の家富栄たるまのけ梳のまゝ知るとして知らざるをむとせよの教と受と
 抱き敷く坪の敷より重の碑のりかゝるまの倉はとまの松山小猪はく通入深
 因果中身は中宿の井もまて腰高のかゝるを疎ゆ一筆流にかけ子四はるま
 焼物皿のちりり女房とすの得りて著ゆかゝる流と流と本膳は善
 さらしひより浅黄木地盤の浅黄梳黒の蠟塗まゝく廓かゝる金のし物
 粗いと世の明く頼ひれいとの二よりも鈍るかゝる一極向本はく所勸善業脚
 二の膳三乃善悪邪正乃次第と分る勸善も所席料理の急極に腕の益
 目もゆゑの戯作も名は天の附名も只假名つれ思ひはき音訓交湯桶と
 さりてしとの筆研ふもこの丸の蓋で三本の三冊倉て六冊時体する其世話
 たのす青く倉多の振舞の外の師とて要時札の大胡を斐其世の中寝も
 居るまの秋のはむい切溜のわの附其善成聲をく梳の草紙とて在舞舞
 願とせむらにせん

文政十丁亥子孟春新版 馬琴今戲述 團 團



信天翁

まゝんせむか
おろびあやま
女まつれかど
ほけく世を
渡りてく



家具町の膳介

膳介の妻平嫁



愚山人

ひのき
何れん
何れん
何れん



浪速の枕久

いよ
休
いよ
休
いよ
休

碩城松山

糸竹

壹



実鞍
駱大夫

人あはれ
かゝるや速の
うらめし
たゝらぬ
まみし
兼登隠居

糸子

椀屋の老管
皿七



椀屋玖右衛門が妻
高塚

あゝさひの果
奈子波乃
泣き
あゝのほよ
やまぐ
閑齋

椀屋
玖右
衛門
白妻
箸



春の夜
あつちのあつちとあつち
あつちのあつちとあつち
あつちのあつちとあつち
あつちのあつちとあつち

狂齋

椀屋の手代

宇留四郎

浮金
盆太



春の夜
あつちのあつちとあつち
あつちのあつちとあつち
あつちのあつちとあつち
あつちのあつちとあつち

著作堂

花齋

奴隷
助

穴鞍
駱九郎

Handwritten text in a cursive script, likely a form of shorthand or a specific dialect, covering the top and right portions of the page. The text is dense and fills the space around the illustrations.



Handwritten vertical text on the left margin of the page.

Small handwritten mark or character at the bottom left of the page.

Handwritten text in a cursive script, continuing from the previous page, covering the top and right portions of the page. The text is dense and fills the space around the illustrations.



Handwritten vertical text on the right margin of the page.

Small handwritten mark or character at the bottom right of the page.

Handwritten text in a cursive style, likely a transcription of a Japanese text, located on the right page of the manuscript. The text is arranged in vertical columns, reading from right to left. It appears to be a detailed account or a dialogue, possibly related to the illustration below it.



Handwritten text in a cursive style, likely a transcription of a Japanese text, located on the left page of the manuscript. The text is arranged in vertical columns, reading from right to left. It appears to be a detailed account or a dialogue, possibly related to the illustration below it.



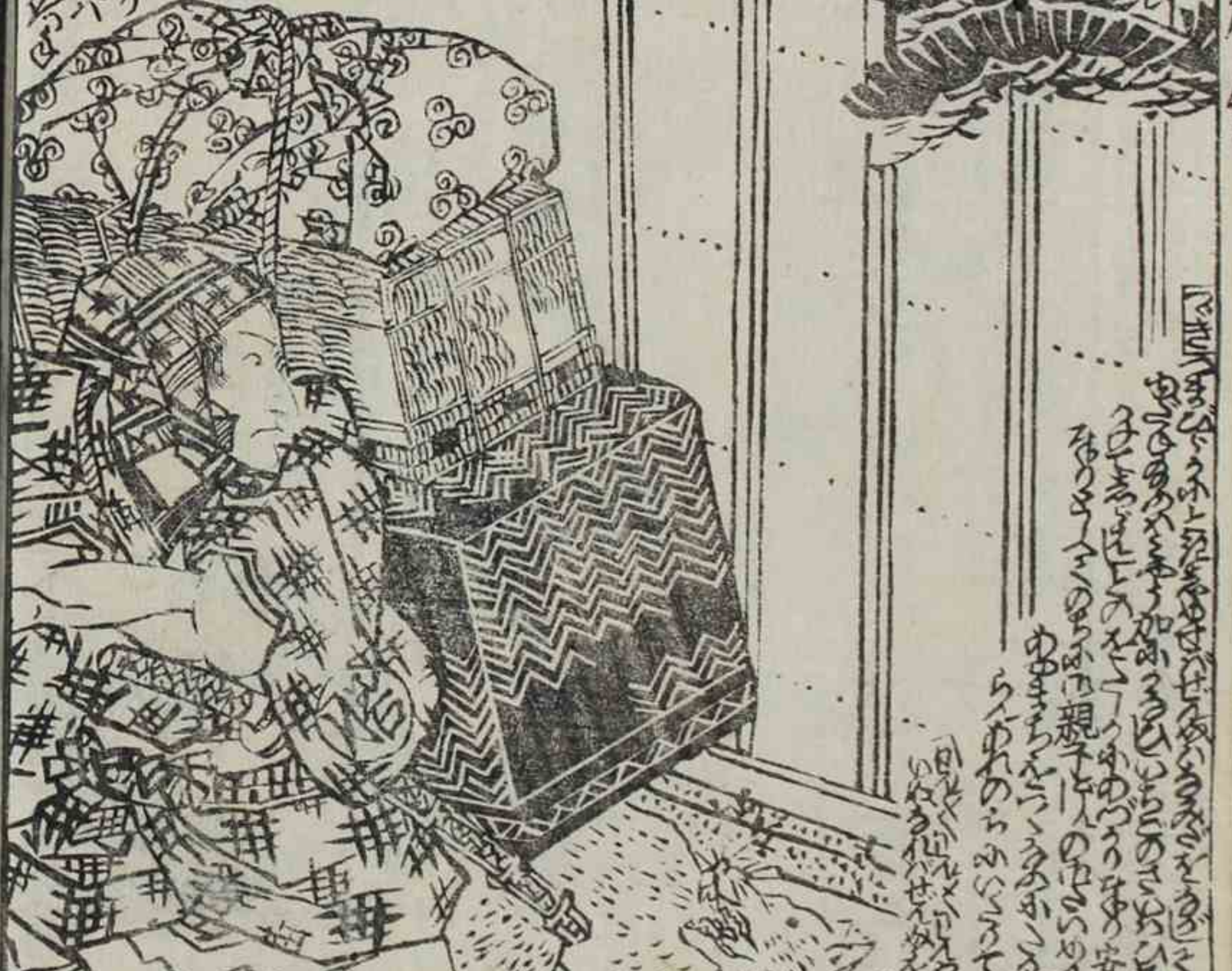
Small vertical text or a page marker located on the left edge of the manuscript page.

Small vertical text or a page marker located on the left edge of the manuscript page.

Handwritten text in a cursive script, likely a historical or ethnographic record. The text is arranged in several columns, with some sections appearing to be organized into lists or tables. The script is dense and fills most of the page area.



Handwritten text in a cursive script, similar to the left page. It is organized into columns and includes some headings or labels. The text appears to be a detailed account or list.

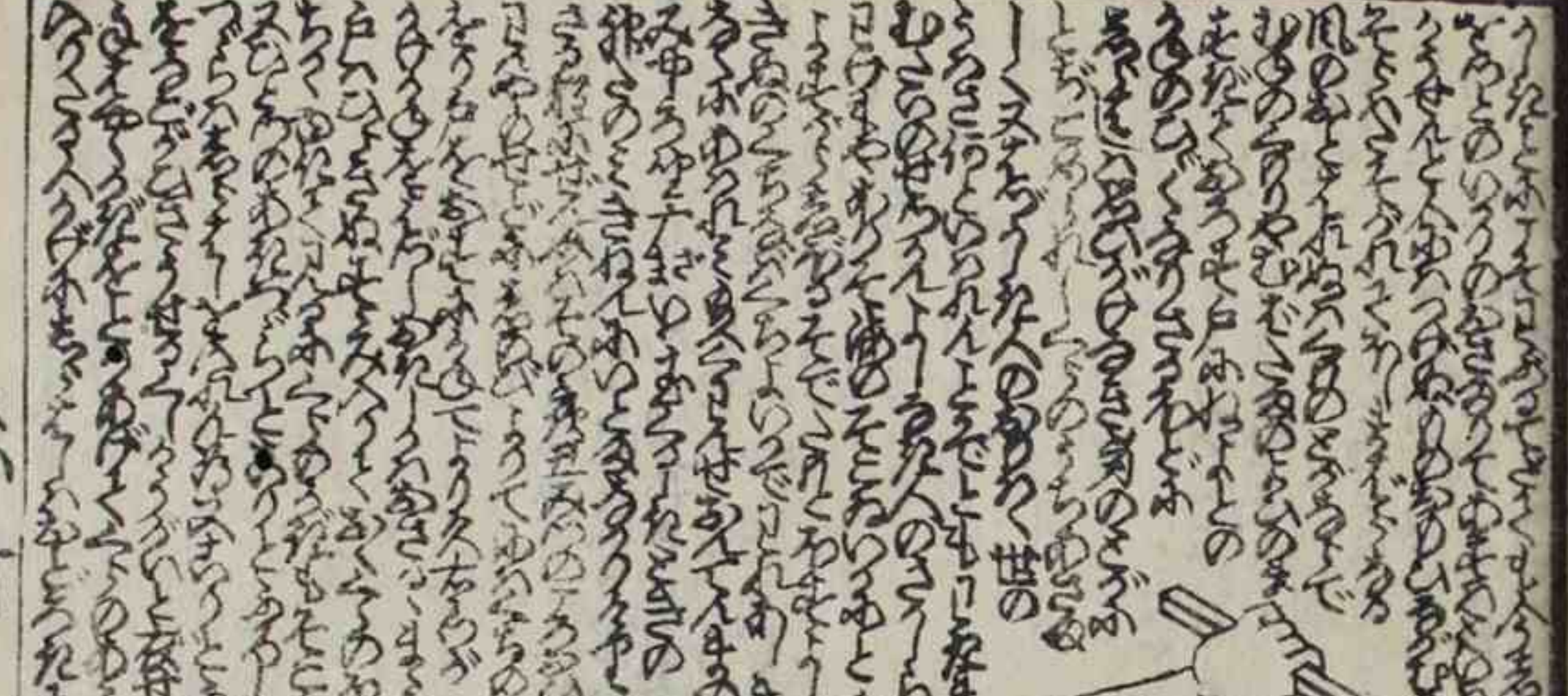


Handwritten text in a cursive script, likely a transcription of a Japanese text, located at the top of the right page. The text is arranged in several columns, starting from the right edge and moving towards the center.



Handwritten text in a cursive script, likely a transcription of a Japanese text, located at the bottom of the right page. The text is arranged in several columns, starting from the left edge and moving towards the right.

Handwritten text in a cursive script, likely a transcription of a Japanese text, located at the top of the left page. The text is arranged in several columns, starting from the right edge and moving towards the center.



Handwritten text in a cursive script, likely a transcription of a Japanese text, located at the bottom of the left page. The text is arranged in several columns, starting from the left edge and moving towards the right.

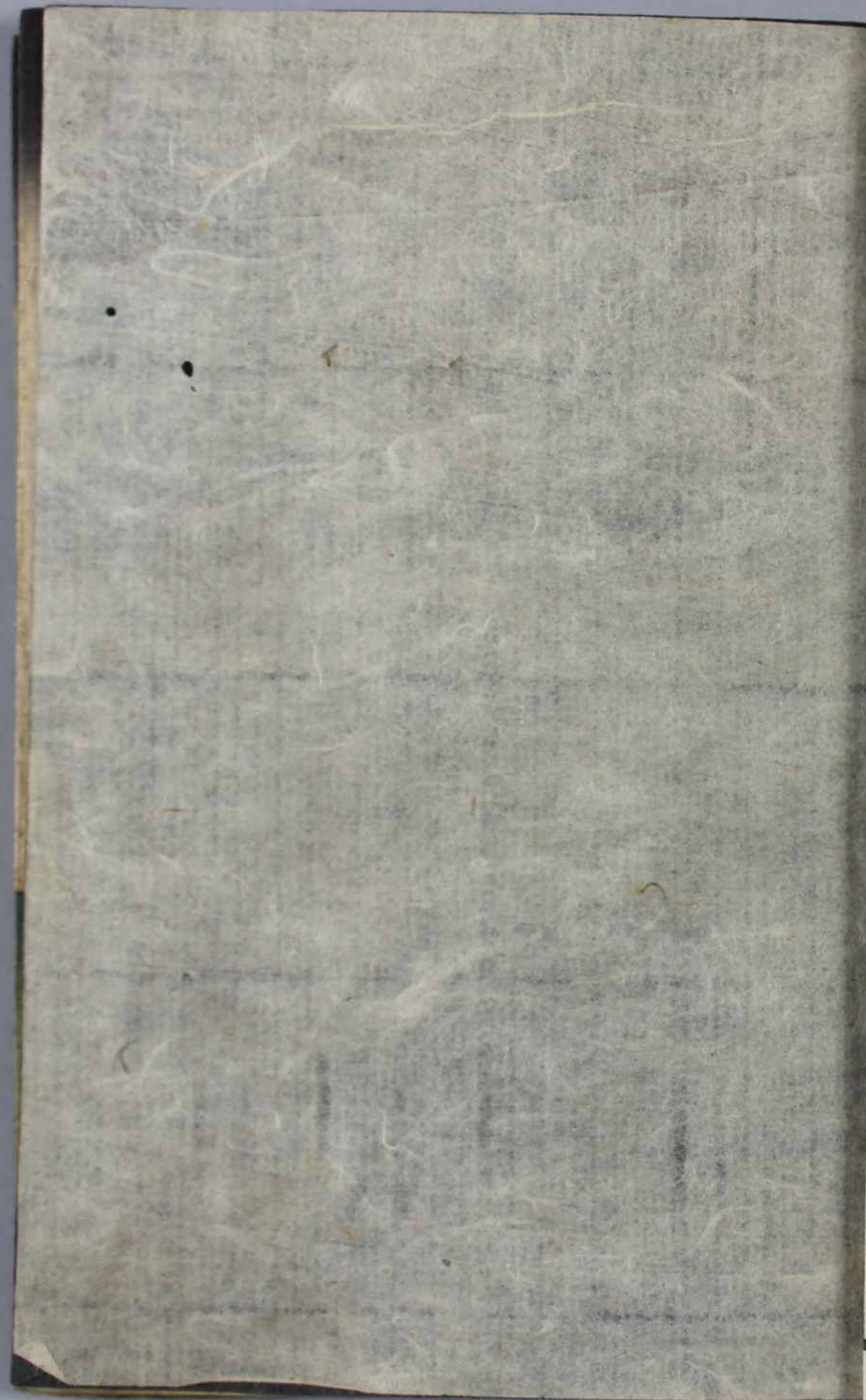
Handwritten text in a cursive script, likely a form of shorthand or a specific dialect, covering the top and left portions of the page. The text is arranged in vertical columns, reading from right to left.

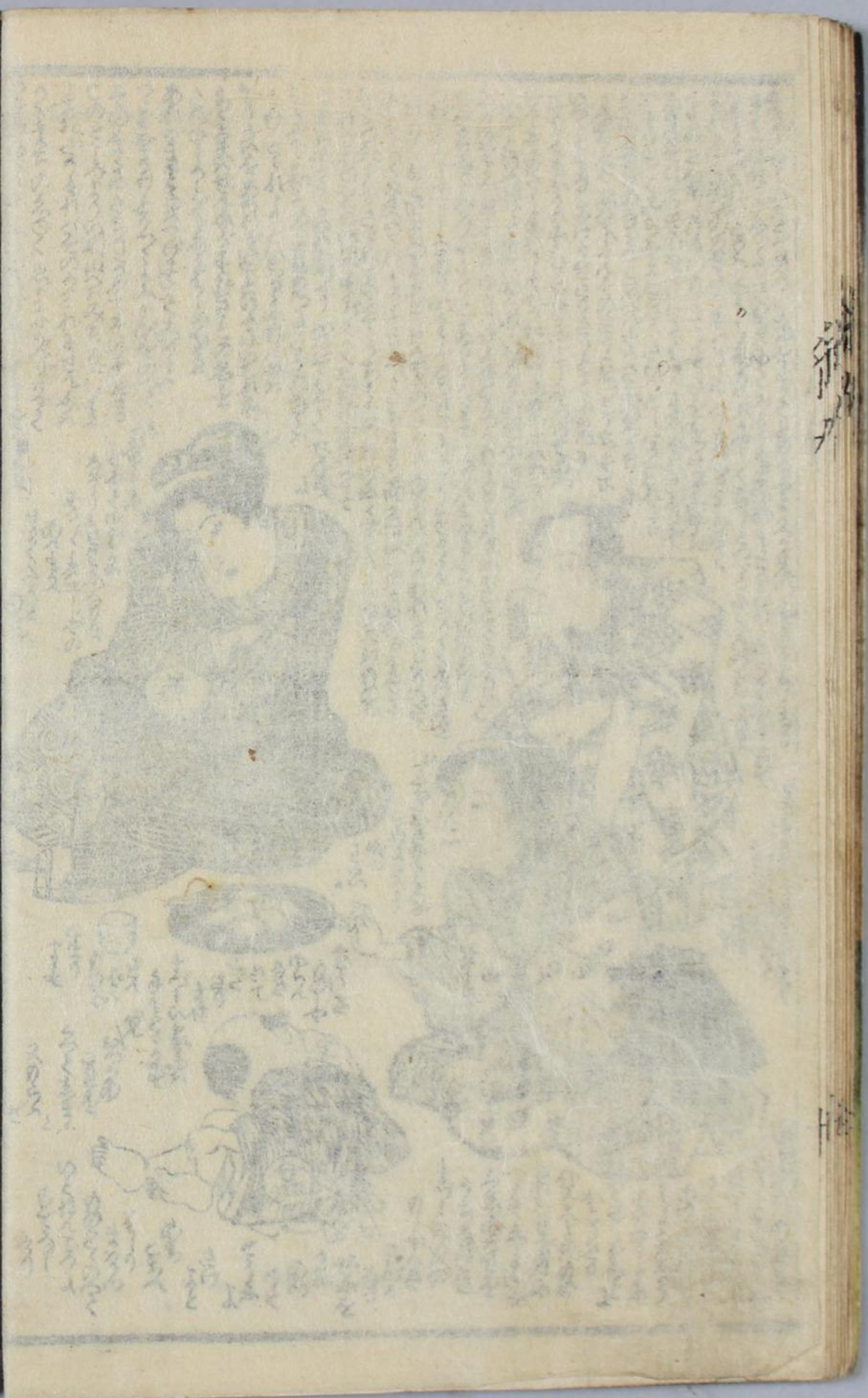


Handwritten text in a cursive script, continuing from the left page, covering the top and right portions of the page. The text is arranged in vertical columns, reading from right to left.



Handwritten Japanese text in vertical columns, likely a play script or commentary, surrounding the illustration. The text is written in a cursive style (sōsho) and includes various characters and symbols.







福乃
中編

孟春 西村永善堂

曲亭馬琴戲編

全六局中編

牽牛織女

願
竹
絲

五渡亭國貞画 西村屋新版

三



Handwritten text in vertical columns, likely a play script or commentary, surrounding the illustration. The text is written in a cursive style and includes various characters and symbols.



Handwritten text in vertical columns, continuing the play script or commentary from the previous page. The text is written in a cursive style and includes various characters and symbols.



Handwritten text in vertical columns, likely a commentary or a list of items related to the illustration. The text is dense and covers most of the page area.



Handwritten text in vertical columns, continuing the commentary or list from the left page. The text is dense and covers most of the page area.



Vertical columns of handwritten Japanese text, likely a commentary or a play script, surrounding the illustration.



Vertical columns of handwritten Japanese text, likely a commentary or a play script, surrounding the illustration.



馬琴作
 此書乃日本著名小說家馬琴所作，其內容多為歷史故事，情節動人，深受讀者喜愛。此處所錄者為其中一段，描寫了當時社會的種種面貌。

此段文字詳細描寫了當時的社會生活，包括人物的言行、社會的風氣以及當時的經濟狀況。文字流暢，敘述生動，展現了馬琴深厚的文學功底。

在描寫中，作者巧妙地將個人命運與時代背景相結合，使讀者能夠從宏觀的角度理解當時的社會現狀。這種寫作手法，不僅增強了作品的藝術感染力，也具有重要的史料價值。

此外，文中還穿插了許多生動的細節描寫，使人物形象更加鮮活，場景更加真實。這些細節不僅豐富了作品的內容，也反映了當時社會的真實面貌。

總的來說，這一段文字是馬琴文學創作中的精彩篇章，充分展現了他在小說創作上的卓越才華。通過對這段文字的學習，我們不僅可以領略到日本傳統文學的魅力，也可以從中汲取豐富的營養。



此段文字描寫了當時的社會生活，包括人物的言行、社會的風氣以及當時的經濟狀況。文字流暢，敘述生動，展現了馬琴深厚的文學功底。

在描寫中，作者巧妙地將個人命運與時代背景相結合，使讀者能夠從宏觀的角度理解當時的社會現狀。這種寫作手法，不僅增強了作品的藝術感染力，也具有重要的史料價值。

此外，文中還穿插了許多生動的細節描寫，使人物形象更加鮮活，場景更加真實。這些細節不僅豐富了作品的內容，也反映了當時社會的真實面貌。

總的來說，這一段文字是馬琴文學創作中的精彩篇章，充分展現了他在小說創作上的卓越才華。通過對這段文字的學習，我們不僅可以領略到日本傳統文學的魅力，也可以從中汲取豐富的營養。



此段文字描寫了當時的社會生活，包括人物的言行、社會的風氣以及當時的經濟狀況。文字流暢，敘述生動，展現了馬琴深厚的文學功底。

在描寫中，作者巧妙地將個人命運與時代背景相結合，使讀者能夠從宏觀的角度理解當時的社會現狀。這種寫作手法，不僅增強了作品的藝術感染力，也具有重要的史料價值。

此外，文中還穿插了許多生動的細節描寫，使人物形象更加鮮活，場景更加真實。這些細節不僅豐富了作品的內容，也反映了當時社會的真實面貌。

總的來說，這一段文字是馬琴文學創作中的精彩篇章，充分展現了他在小說創作上的卓越才華。通過對這段文字的學習，我們不僅可以領略到日本傳統文學的魅力，也可以從中汲取豐富的營養。

Handwritten text in vertical columns, likely a commentary or translation of the adjacent illustration. The text is dense and covers most of the page area.



Handwritten text in vertical columns, continuing the commentary or translation from the previous page. The text is dense and covers most of the page area.



Handwritten text in a cursive script, likely a chapter introduction or a section header, located at the top of the right page.



Handwritten text in a cursive script, likely a chapter introduction or a section header, located at the bottom of the right page.

Handwritten text in a cursive script, likely a chapter introduction or a section header, located at the top of the left page.

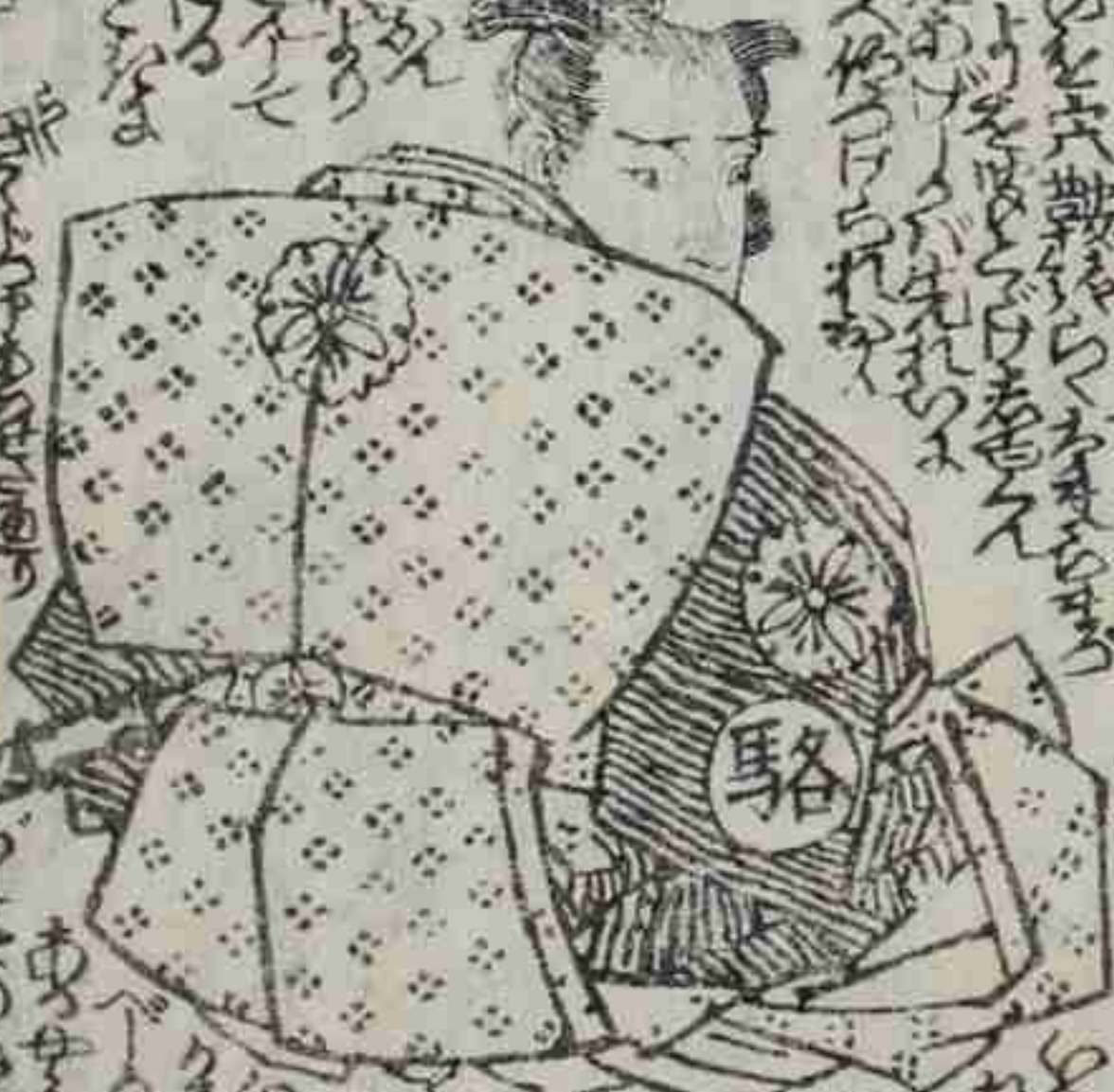


Handwritten text in a cursive script, likely a chapter introduction or a section header, located at the bottom of the left page.

Handwritten text in a vertical column on the right side of the page, likely a commentary or a list of items.



Handwritten text in a vertical column on the left side of the page, continuing the commentary or list from the right page.





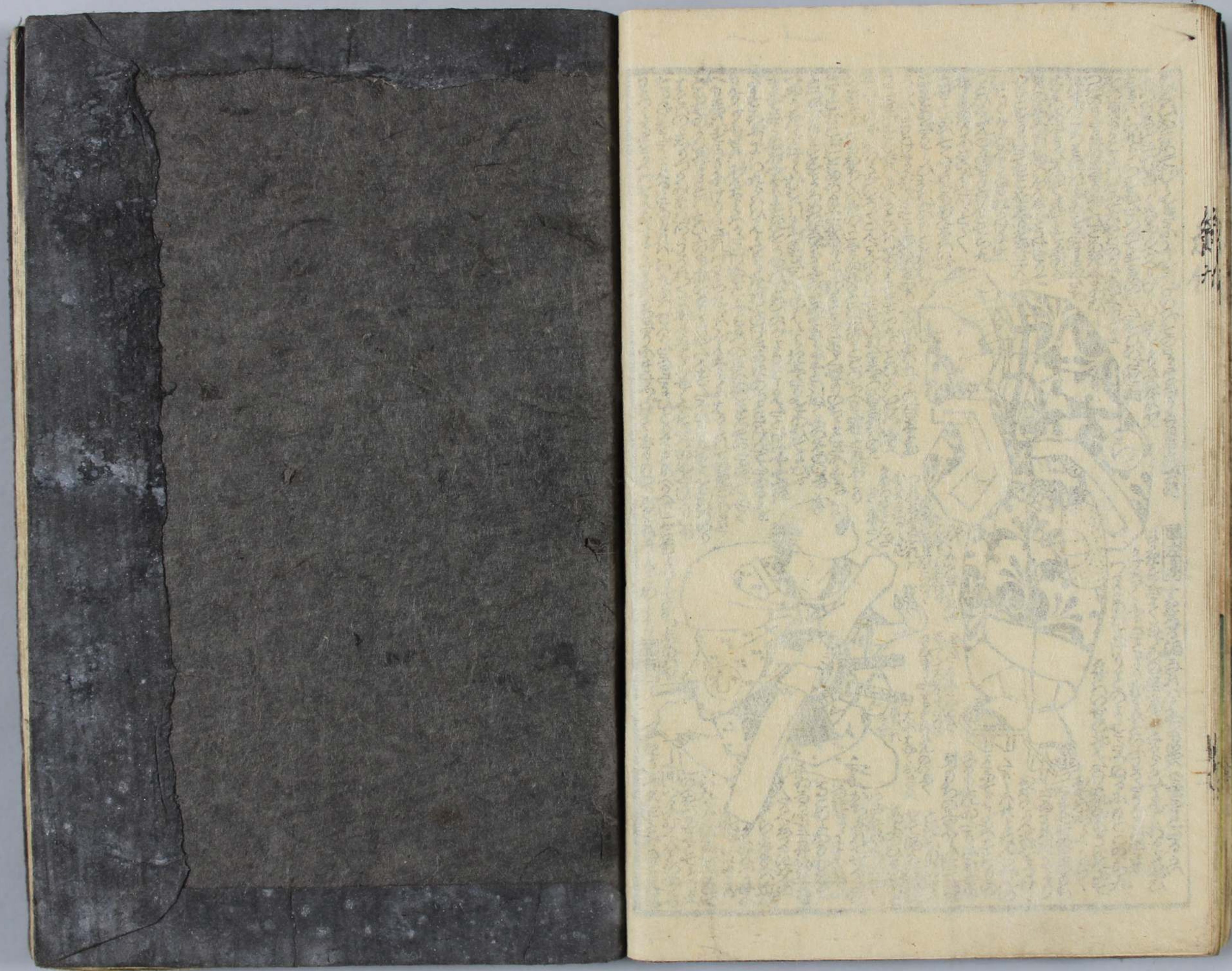
Handwritten text in a cursive script, likely a translation of a Japanese text. The text is arranged in vertical columns, with some sections enclosed in rectangular boxes. The script is dense and fills the space around the illustration.



Handwritten text in a cursive script, continuing the translation from the previous page. The text is arranged in vertical columns, with some sections enclosed in rectangular boxes. The script is dense and fills the space around the illustration.

Handwritten text in a cursive script, likely a form of Chinese or Japanese, surrounding the illustrations. The text is arranged in columns, with some lines appearing to be part of a dialogue or a narrative. The script is dense and fills most of the page area around the drawings.







國貞画



下編

馬町永堂
喰壽

全六合身



此の巻は、
 馬琴の
 所作の
 物語を
 採りて、
 其の
 大意を
 撰りて、
 其の
 趣意を
 示す
 事也。

此の巻は、
 馬琴の
 所作の
 物語を
 採りて、
 其の
 大意を
 撰りて、
 其の
 趣意を
 示す
 事也。

此の巻は、
 馬琴の
 所作の
 物語を
 採りて、
 其の
 大意を
 撰りて、
 其の
 趣意を
 示す
 事也。



願

編の

系

の

下

編 永土堂 版



國貞画

Handwritten text in vertical columns, likely a commentary or a list of items, surrounding the central illustration.



Handwritten text in vertical columns, likely a commentary or a list of items, surrounding the central illustration.



Handwritten text in a cursive script, likely a Japanese diary or travelogue, covering the top and bottom portions of the left page. The text is densely packed and follows the contours of the illustration.



Small handwritten text or a signature located in the upper right corner of the left page.

Small handwritten text or a signature located in the lower right corner of the left page.

Handwritten text in a cursive script, likely a Japanese diary or travelogue, covering the top and bottom portions of the right page. The text is densely packed and follows the contours of the illustration.



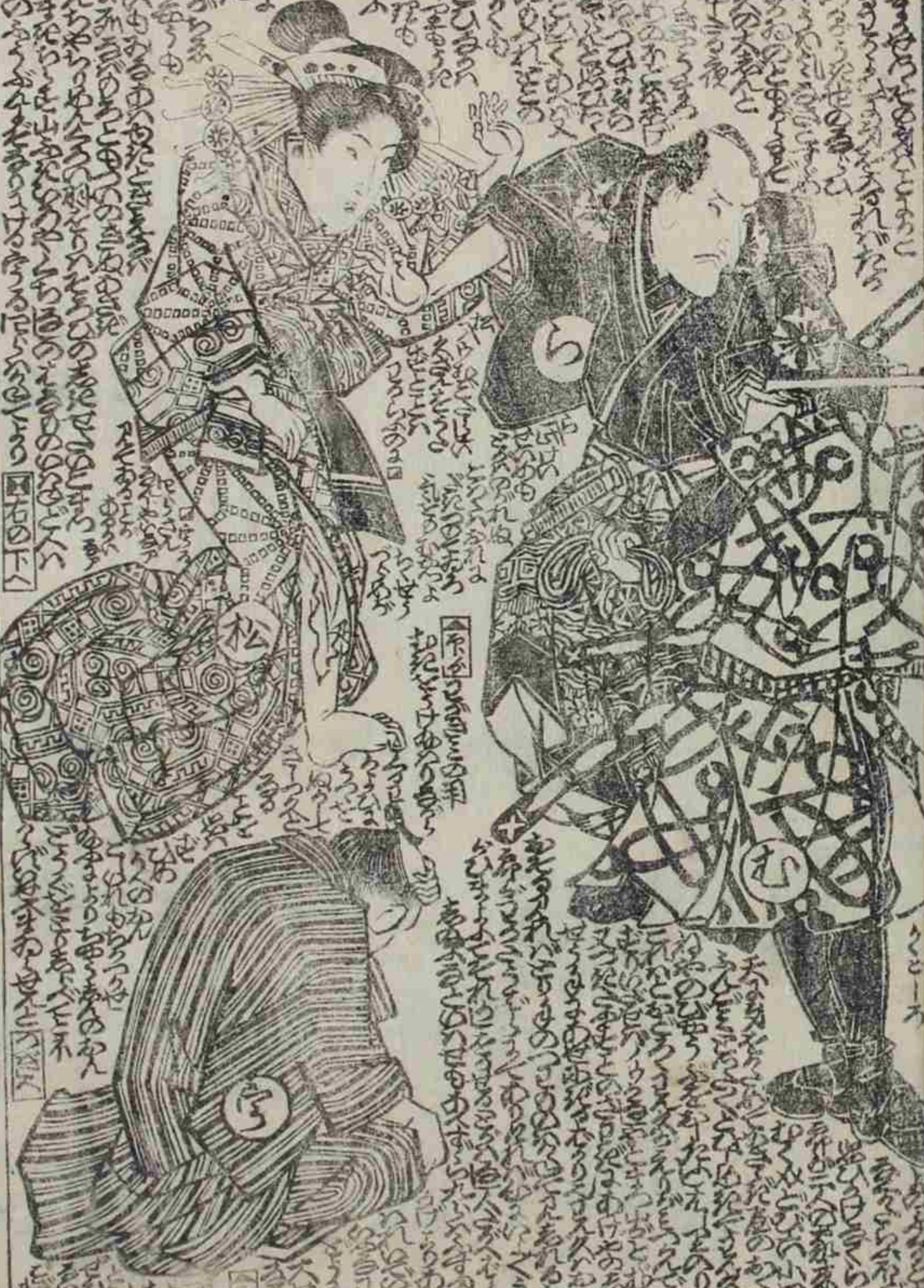
Small handwritten text or a signature located in the upper right corner of the right page.

Small handwritten text or a signature located in the lower right corner of the right page.

此圖繪有四人，其衣冠皆極其華麗。上方一人，衣冠最為整齊，其衣上飾有繁複之紋樣。其下二人，亦著精緻之裝束，其衣上亦飾有各種圖案。最下方一人，衣冠較為樸素，但其衣上亦有細微之紋飾。此圖所繪之人物，其身份地位之高低，可由其衣冠之繁簡而知之。此圖之繪法，極為精細，其線條之運用，亦極其嫺熟。此圖之背景，亦極其簡潔，其意圖在於突出人物之衣冠。此圖之繪法，實為當時繪畫之極品。此圖之繪法，亦極其精細，其線條之運用，亦極其嫺熟。此圖之背景，亦極其簡潔，其意圖在於突出人物之衣冠。此圖之繪法，實為當時繪畫之極品。



此圖繪有三人，其衣冠亦極其華麗。上方一人，衣冠最為整齊，其衣上飾有繁複之紋樣。其下二人，亦著精緻之裝束，其衣上亦飾有各種圖案。此圖所繪之人物，其身份地位之高低，可由其衣冠之繁簡而知之。此圖之繪法，極為精細，其線條之運用，亦極其嫺熟。此圖之背景，亦極其簡潔，其意圖在於突出人物之衣冠。此圖之繪法，實為當時繪畫之極品。此圖之繪法，亦極其精細，其線條之運用，亦極其嫺熟。此圖之背景，亦極其簡潔，其意圖在於突出人物之衣冠。此圖之繪法，實為當時繪畫之極品。



Handwritten text in vertical columns, likely a commentary or a play script, surrounding the illustration. The text is written in a cursive style, typical of Edo-period Japanese manuscripts.



Handwritten text in vertical columns, likely a commentary or a play script, surrounding the illustration. The text is written in a cursive style, typical of Edo-period Japanese manuscripts.



Handwritten text in a cursive script, likely a form of shorthand or a specific dialect, located at the top of the left page.



Handwritten text in a cursive script, likely a form of shorthand or a specific dialect, located at the top of the right page.





Handwritten text in a cursive script, likely a historical or literary account, surrounding the illustration. The text is arranged in columns, with some lines written vertically and others horizontally, following the contours of the scene. It appears to be a detailed narrative or commentary on the events depicted in the drawing.



Handwritten text in a cursive script, continuing the narrative from the opposite page. The text is densely packed and follows the layout of the illustration, providing a detailed account of the events shown. The script is consistent with the text on the other page, suggesting a continuous story.







馬琴作



國貞画

家傳神女湯... 精製奇應... 直方熊胆... 婦人... 本家... 弘明... 取...

書林永壽堂新刻目錄 西村屋與八

今様櫛笥... 前北齋為... 中本全三冊

百橋一覽... 右高画... 一枚摺... 前北齋為... 中本全三冊

即考百籤... 中本一冊... 三國一夜物語... 全五冊... 曲直亭馬琴作

日光道中記... 自在... 早操... 諸氏... 通用... 手紙... 中本一冊

初心手學抄... 蓮池堂先生書... 大字高馬... 大本一冊

御流... 手紙... 文言後集... 中本一冊

鎮火用心集 小本 一冊
庭訓往來画抄解 大木一冊
古刀鑒定口訣 中本一冊

伊波 古刀劍銘畫 中本一冊
遊言画手本 一名

早割塵却記成 横綴懷中本
狂歌關東百題集 全三冊

同 五十人一首 全二冊
同 扶桑集 全冊

同 活砂子集 全二冊

來禽堂詩草 東江法帖 全二冊
茶の湯早指南 一冊

石燕画譜 大木 彩色摺 全一冊
初心画鑑 全冊

增補 實業集團訓 全一冊
女今川 全一冊

繪本言化鳥 押繪雛形 全一冊

訓蒙 武者鑑 全二冊
萬家養生傳 全一冊

信大指圖軍記 熊坂軍記 松田波取明寺殿教訓百首

柳亭種彦隨筆
還魂紙料

古圖入 二冊 出校

古圖入 二冊 出校

書肆永壽堂賣弘奇藥略效能



此藥之功效... 治一切... 凡患此症者... 宜早服之... 功效如神... 誠濟世之良藥也... 永壽堂主人謹啟

蘭玉屑

美點福香

此藥之功效... 治一切... 凡患此症者... 宜早服之... 功效如神... 誠濟世之良藥也... 永壽堂主人謹啟

牽牛織女願系竹 全六冊 曲亭馬琴作 五渡亭國貞畫

代夜待白女辻占 全六冊 曲亭馬琴作 歌川國貞畫

繫馬七勇婦傳 全六冊 南仙笑楚滿人作 初編二編とも製在 瀨齋英泉画

返り丸 全六冊 柳亭種彦作 五渡亭國貞画

正本製九編 全六冊 柳亭種彦作 心本製十編 珠子の春山板仕

花田力戀乃百草 全六冊 志満山人作 哥川國信画

手鞠唄幼稚繪説 全六冊 楚満人作 春齋英笑画

笑話 全六冊 林屋正藏作 哥川國画

團扇地紙錦繪 新撰 初編 年々出版

壁諭艸心種本 全六冊 十返舎一九作 春齋英笑画

今昔虚實録 全六冊 櫻川慈悲成作 歌川豊國画

西村屋與八 每約巻く出版仕

五木... 全六冊

... 全六冊

... 全六冊

... 全六冊

... 全六冊

... 全六冊

... 全六冊

... 全六冊

... 全六冊

... 全六冊

... 全六冊

... 全六冊

24L
43



文
書
度

文