

A New Species of the Genus *Andrena* from Japan (Hymenoptera, Andrenidae)

Tadauchi, Osamu
Entomological Laboratory, Faculty of Agriculture, Kyushu University

Goubara, Masashi
Civil Engineering and Eco-Technology Consultants

<https://doi.org/10.5109/19394>

出版情報 : ESAKIA. 50, pp.23-26, 2011-02-28. Entomological Laboratory, Faculty of Agriculture,
Kyushu University
バージョン :
権利関係 :

A New Species of the Genus *Andrena* from Japan (Hymenoptera, Andrenidae)

Osamu TADAUCHI¹⁾ and Masashi GOUBARA²⁾

1) Entomological Laboratory, Faculty of Agriculture, Kyushu University, Fukuoka,
812-8581 Japan

2) Civil Engineering and Eco-Technology Consultants Co., Ltd., 4-7-17, Chuo, Aobaku,
Sendai, 980-1121 Japan

Abstract. A new species, *Andrena (Andrena) katakuri*, is described from Japan.

Key words: taxonomy, Hymenoptera, Andrenidae, *Andrena*, new species, Japan.

We found a new species of the genus *Andrena* belonging to the subgenus *Andrena* which flies early to mid April and mainly associated with *Erythronium japonicum* Decne.

***Andrena (Andrena) katakuri* sp. nov.**
(Japanese name: katakuri-hime-hanabachi)
(Figs. 1 & 2)

Female. BL 9.8-10.0 mm; WL 7.6-7.9 mm (n = 4).

Color. Flagellum brownish beneath; mandible with apical third reddened; wing membranes subhyaline, slightly brownish, veins and pterostigma brown; tibial spurs yellowish; posterior margins of terga brown transparent.

Pubescence. Hairs on head dense, dull whitish; those on clypeus dense, slightly long 500-600 μ m, dull whitish; those on vertex long 600-800 μ m, dull whitish; those on genal area dense, slightly long 300-600 μ m, dull whitish; facial fovea dark brownish above, pale brownish below. Hairs on mesoscutum dense, relatively long 400-600 μ m, dull whitish; those on scutellum dense, long 600-700 μ m, dull whitish; those on mesepisternum dense, long 600-800 μ m, dull whitish; propodeal corbicular completely developed with long curled, dull whitish hairs, without internal hairs and with anterior hairs; trochanteral floccus perfect, long, curled, whitish; femoral floccus dense, long, whitish; tibial scopa well developed, simple, dull whitish. Hairs

on metasomal terga T₁ with long suberect whitish hairs, T₂₋₄ with very short whitish hairs; T₁ without hair band; T₂₋₄ with interrupted obscure whitish hair bands; caudal fimbria yellowish brown; S₂₋₅ with long, sparse, dull whitish subapical fimbriae.

Structure. Head length 2.4 mm, head width 2.8 mm, HL/HW = 0.86. HW: MsW: MtW: 2.8: 2.6: 3.0. Vertex rounded in frontal view, shagreening, with fine obscure PP 20 μ m, IS = 0.5. OOD: POD: OCD: = 0.5: 0.3: 0.3. FL₁ > FL₂+FL₃, FL₂ < FL₃ which is longer than broad. Eyes with inner margins subparallel. Supraclypeal area convex, weakly shiny, with small PP. Facial fovea broad occupying 3/4 space between eye and lateral ocellus, a little extending to a line at lower margins of antennal fossae, FVL = 1.0 mm, FVW = 0.45 mm. Face above antennal fossae with fine longitudinal rugulae and weak interrugal PP, shagreening. Facial quadrangle as long as broad (2.0:2.0). Clypeus convex, weakly tessellate all over, punctate with sparse weak shallow PP 30-40 μ m, IS = 0.5-1, with broad longitudinal median impunctate space, CPL = 1.2 mm. Process of labrum broad, trapezoidal. Lower paraocular area polished to weakly tessellate, punctate with dense, irregular PP 30-40 μ m, IS = 0.5-1. Malar space linear. Genal area broader than eye, GW: EW = 0.7:0.4, polished near eye with minute PP 20 μ m, IS = 1, broadly weakly tessellate posteriorly. Mesosoma: Pronotum with lateral suture and humeral angle, densely tessellate, shiny with fine, sparse weak PP 20-25 μ m, with a median longitudinal line. Mesoscutum densely

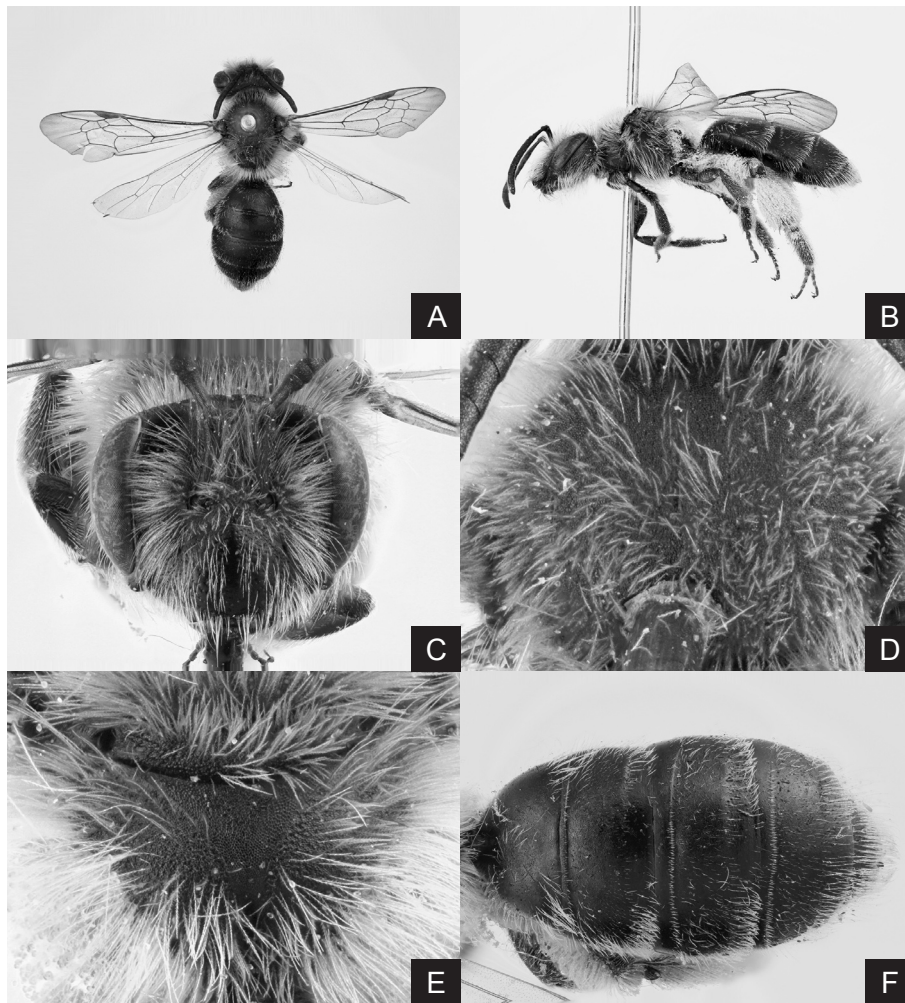


Fig. 1. *Andrena (Andrena) katakuri* sp. nov., female. A: general habitus in dorsal view; B: the same in lateral view; C: head in frontal view; D: mesoscutum; E: propodeum; F: metasomal terga.

tessellate, punctate, with fine, dense PP 20-30 μ m, IS = 0.5-1. Scutellum densely tessellate, punctate, and partly roughened, with dense, small PP 20-30 μ m, IS = 0.5-1. Propodeal enclosure triangular, nearly granulate all over; dorsal face of propodeum shagreened with fine, obscure PP. Mesepisternum densely tessellate, with sparse obscure small PP 20 μ m. Metasoma: Metasomal terga weakly tessellate, sparsely and weakly punctate, with microscopic PP 20 μ m, IS = 1-2; posterior depressions of terga well indicated, less tessellate, more shiny; pygidial plate U shaped with raised internal triangular area. S₂₋₅ weakly tessellate and shiny with dense, minute PP 20 μ m.

Male: BL 7.5-7.7 mm, WL 6.2-6.5 mm (n=6).

Color. Flagellum dark brown beneath; mandible with apical third reddened; wing membranes subhyaline, veins and pterostigma brown; tibial spurs yellow; posterior margins of terga brownish, transparent.

Pubescence. Hairs on head long, dull whitish; those on clypeus and genal area 600-800 μ ; those on antennal area whitish mixed with brownish; those on vertex 600-800 μ mixed with brownish. Hairs on mesoscutum not dense, dull whitish; those on scutellum and propodeum dense, dull whitish; those on mesepisternum dull whitish. Hairs on metasomal tergum 1 moderately long, suberect, dull whitish; those on terga 2-5 very short, sparse, dull white; terga 1-5 without hair bands; sterna 2-5 with well-formed dense curled subapical fimbriae.

Structure. *Head:* HL/HW = 0.76. HW: MsW: MtW = 2.5: 1.8: 2.2. Vertex rounded in frontal view, densely tessellate with close PP at middle, weakly tessellate, shiny near top of eyes. OOD : POD : OCD = 0.5: 0.3: 0.2. FL1 > FL2, FL2 < FL3 which is longer than broad. Eyes with inner margins subparallelled. Supraclypeal area nearly flat and face above antennal fossae sculptured similar to

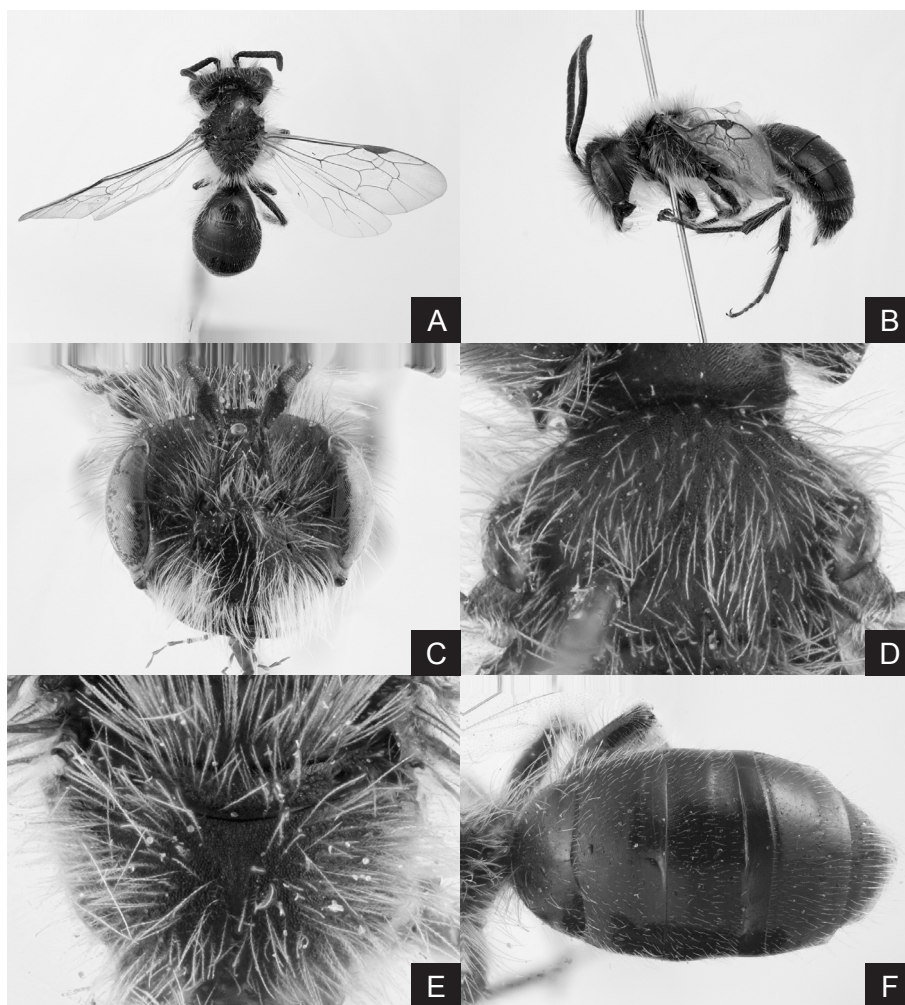


Fig. 2. *Andrena (Andrena) katakuri* sp. nov., male. A: general habitus in dorsal view; B: the same in lateral view; C: head in frontal view; D: mesoscutum; E: propodeum; F: metasomal terga.

female, but interrugal PP stronger. Facial quadrangle as long as broad (about 1.7: 1.6). Clypeus nearly flat, smooth and shiny with sparse weak PP $\approx 20\mu$, IS = 1-2, CPL = 0.7 mm, with broad longitudinal shiny impunctate space and median area raised. Process of labrum trapezoidal, deeply excavate beneath. Mandibles very long, decussate, falciform with a basal projection. Lower paraocular area as in clypeus. Malar space linear. Genal area broader than long, GW: EW = 0.8: 0.5, distinctly angled behind, surface finely tessellate posteriorly, narrowly smooth and shiny with minute sparse PP, IS = 1 near eye. *Mesosoma*: Pronotum with distinct humeral angle and ridge, dorsal surface weakly tessellate with obscure PP. Mesoscutum weakly tessellate with small, weak PP, IS = 0.5-1 medially, densely tessellate and denser PP peripherally. Scutellum weakly tessellate with shallow, sparse PP. Propodeum including enclosure, mesepisternum sculp-

tured as in female. *Metasoma*: Metasomal terga weakly tessellate and shiny with indistinct, sparse small PP, IS = 2-3; posterior depressions of terga well indicated, less tessellate, shiny. Sterna 2-5 weakly tessellate with sparse weak PP.

Type material: Holotype female, Yasawa, Hanamaki, Iwate Pref., Japan, 11. iv. 2003 (T. Chiba). Paratypes: same locality and collector as the holotype: 2 males, 3. iv. 2003; 2 females, 11. iv. 2003; 2 females and 4 males, 17. iv. 2003.

Type depository: Holotype: Entomological Laboratory, Kyushu University (ELKU), Fukuoka. Paratypes: Iwate Prefectural Museum, Morioka and ELKU.

Remarks: This species is similar to *Andrena hondoica* Hirashima in having the head relatively broader than long. But it is recognized by the clypeus with broad

longitudinal impunctate space, the mesoscutum more densely tessellate-punctate, the propodeal enclosure nearly granulate all over, the caudal fimbria lighter in female and the clypeus with broad longitudinal impunctate space in male.

Etymology. The specific name is derived from the main associated flower, *Erythronium japonicum* Decne, katakuri in Japanese.

Floral association. *Erythronium japonicum* Dacne, *Veronica persica* Poiret, *Salix* sp.

Flight records: Female. mid April, Male. early to mid April.

Distribution: Japan (Honshu: Iwate Pref.).

Acknowledgements

We are indebted to Ms Mahoro Suzuki of Iwate Prefectural Museum for offering valuable specimens. This is a Contribution from the Entomological Laboratory, Faculty of Agriculture, Kyushu University, Fukuoka (Ser. 6, No. 92).

References

- Tadauchi, O., Y. Hirashima & T. Matsumura, 1987. Synopsis of *Andrena* (*Andrena*) of Japan (Hymenoptera, Andrenidae) Part I. *J. Fac. Agr., Kyushu Univ.*, **31**: 11-35.
Tadauchi, O., Y. Hirashima & T. Matsumura, 1987. Synopsis of *Andrena* (*Andrena*) of Japan (Hymenoptera, Andrenidae) Part II. *J. Fac. Agr., Kyushu Univ.*, **31**: 37-54.