

Asymmetrical Allocation of NMDA Receptor $\epsilon 2$ Subunits in Hippocampal Circuitry

Kawakami, Ryosuke

Department of Molecular Biology, Graduate School of Medical Science, Kyushu University

Shinohara, Yoshiaki

Division of Cerebral Structure, National Institute for Physiological Sciences, School of Life Science, The Graduate University for Advanced Studies

Kato, Yuichiro

Department of Biology, Faculty of Sciences, Kyushu University

Sugiyama, Hiroyuki

Department of Biology, Faculty of Sciences, Kyushu University

他

<https://hdl.handle.net/2324/18919>

出版情報 : Science. 300, pp.990-994, 2003-05-09. American Association for the Advancement of Science

バージョン :

権利関係 :

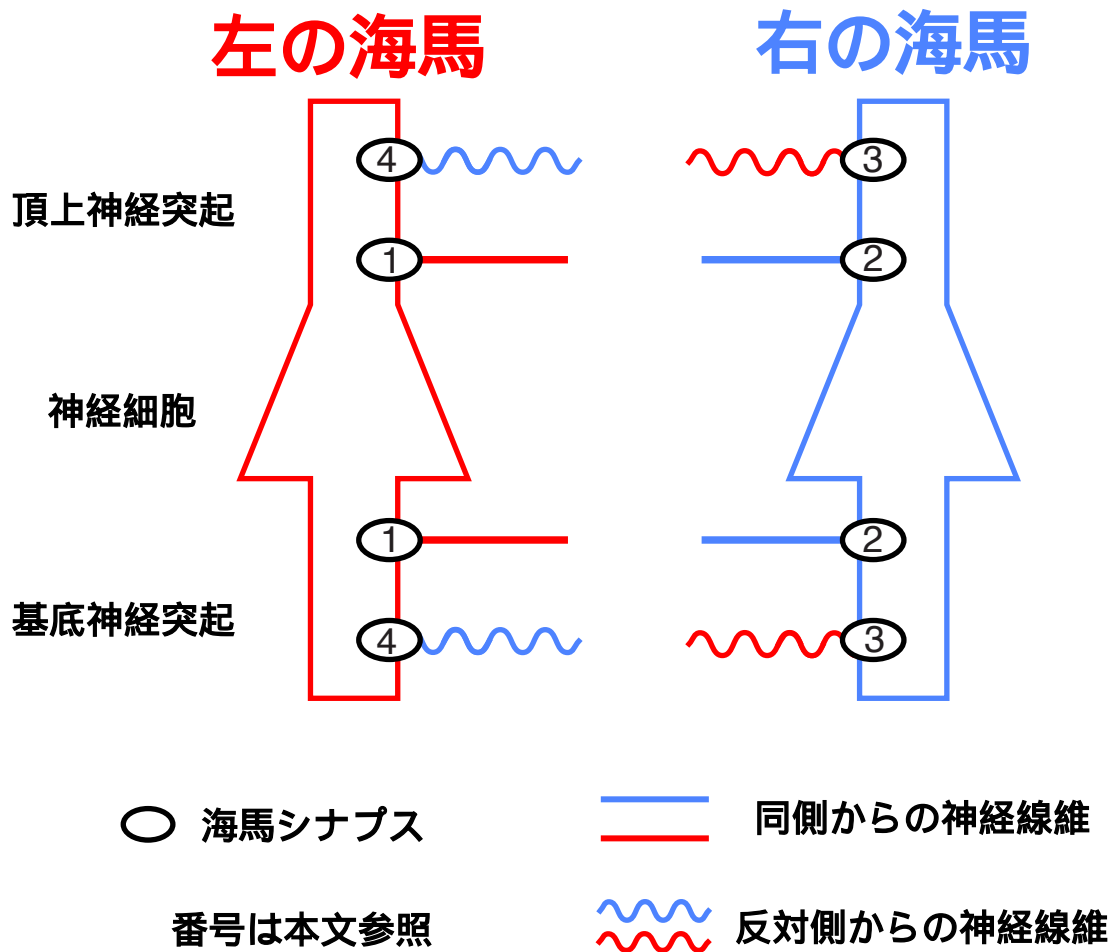


図 1 海馬シナプスの種類と配置